



EBY'S MILL WILDLIFE AREA

Site History



Predominately woodland, the 525 acre Eby's Mill Wildlife Area, with its rugged rocky Silurian age dolomite outcrops, rock shelters and small caves, scenic bluffs, and winding Maquoketa river views, is a lasting legacy of the Arnie Bruggeman family.

Over the years, the Bruggeman family extensively managed their woodlands to encourage the production of high quality timber. One technique utilized extensively here has become widely known as the "Bruggeman Method."

This method included the clearing of marginal tree species; waiting for a good acorn, hickory nut, or walnut crop; and then harvesting the remaining high value trees. After all trees were removed from the site it was then scarified to enhance seedling germination and growth. With follow up timber stand improvement activities Arnie Bruggeman very successfully regenerated quality stands of oak, hickory, and walnut. Hike toward the western edge of the property to observe a 1989 18 acre walnut planting.

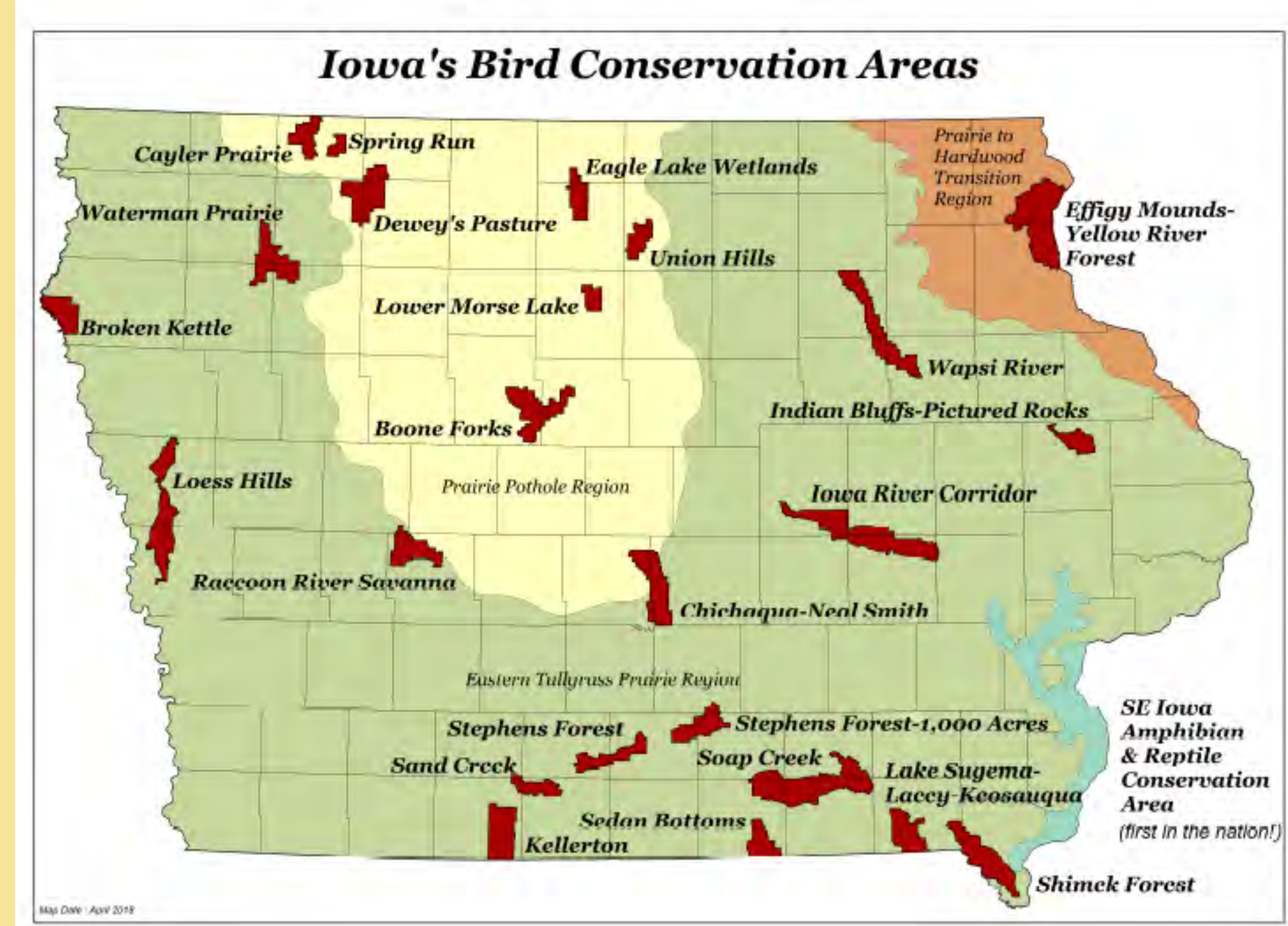


As part of the Maquoketa River Corridor, the Eby's Mill Wildlife Area lies within the Indian Bluffs-Pictured Rocks Iowa Bird Conservation Area.

Two hundred and forty three bird species have been identified here, including the Pileated woodpecker, wood thrush, scarlet tanager, whip-poor-will, and



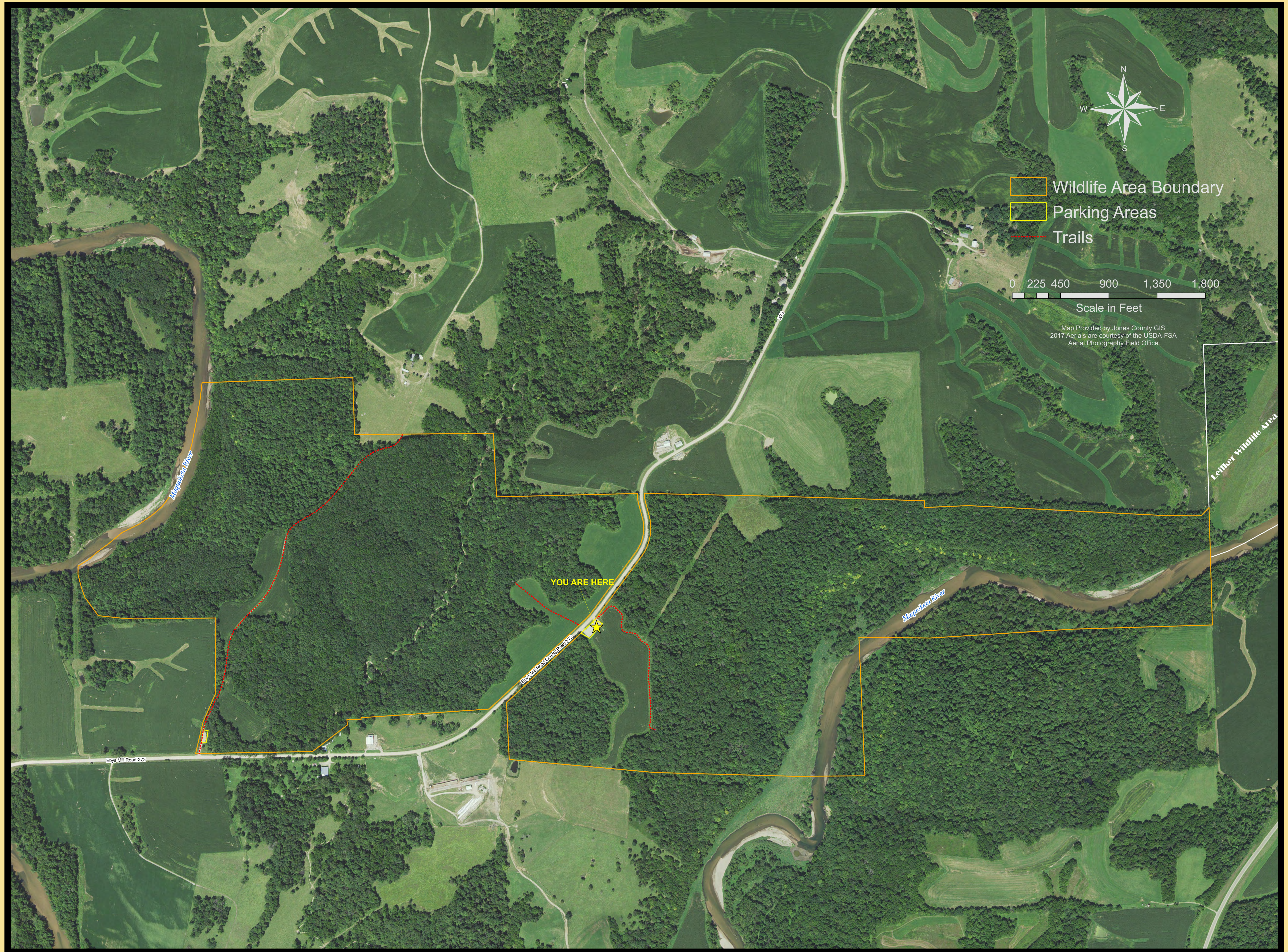
Acadian flycatcher making this area extremely important to Iowa bird conservation.



In addition, the area contains a great diversity of unique animal and plant species such as the southern flying squirrel, bobcat, five-lined skink, timber rattlesnake, and hundreds of native invertebrate, and plant species.

Known by local fishermen for the smallmouth bass fishery it provides, this stretch of the Maquoketa river contains over 34 species of native fish,

as well as historical records of a variety of now rare mussel species.



During pre-historic times people lived, hunted, and traveled through this portion of Iowa. One large rock shelter at Eby's Mill Wildlife Area is believed to have served as a seasonal dwelling and temporary shelter for prehistoric people. A recent restoration project and archaeological study of the shelter was led by the Office of the State Archaeologist assisted by an NCCC AmeriCorps crew, local volunteers, and school children. Many artifacts were found including pottery sherds; bison, beaver, deer, bobcat, raccoon, squirrel, rabbit, fish, and bird bones; clam shells; charcoal; and stone chips from tool fabrication. Artifacts were salvaged and documented to help us learn more about the people who once made the Maquoketa River Valley their home.



Through the foresight of landowners, donors, conservationists, and volunteers, the Eby's Mill Wildlife Area will continue to educate and enthrall visitors for years to come. We hope you enjoy and help us protect this special place. For more information and a downloadable map please visit the JCCB website at www.jonescountyiowa.org/conservation-areas. Bird Conservation Area brochures are available at <http://www.iowadnr.gov/Conservation/Bird-Conservation-Areas>.



To obtain more information about management of this area, please call or write to the Jones County Conservation Board, 12515 Central Park Rd., Center Junction, IA 52212 Telephone: 563-487-3541 Or visit the JCCB Website at www.jonescountyiowa.org/conservation

