

1999 3219

FILED
RECORDERS OFFICE
JONES COUNTY IOWA

99 SEP -8 AM 10:59

MARIE KRUTZFIELD
RECORDER 6.00 Pd

PREPARED BY HALL & HALL ENGINEERS, INC. 209 29TH STREET N.E. CEDAR RAPIDS, IOWA 52402 (319) 362-9548
SECTION CORNER CERTIFICATE

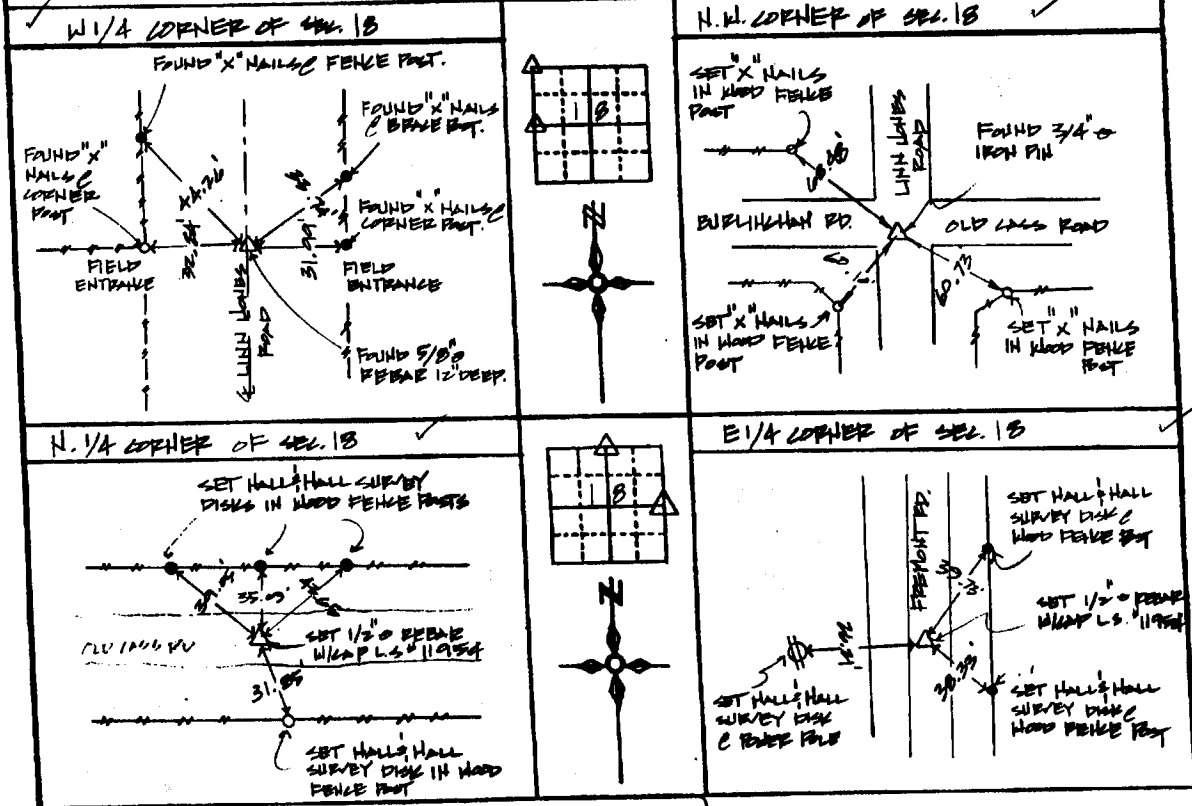
OF
LAND SURVEY MONUMENTS SITUATED IN SECTION 18, TOWNSHIP 85 NORTH,
RANGE 4 WEST, OF THE FIFTH PRINCIPAL MERIDIAN, Jones COUNTY, IOWA.

PREVIOUSLY RECORDED IN BOOK _____ AT PAGE _____

MONUMENT DESCRIPTION AND REMARKS:

W 1/4 CORNER OF SECTION 18, FOUND 5/8" PEBBLE
N.W. CORNER OF SECTION 18, FOUND 3/4" IRON PIN
N 1/4 CORNER OF SECTION 18, SET 1/2" PEBBLE W/ADP L.S. 11954
E 1/4 CORNER OF SECTION 18, SET 1/2" PEBBLE W/ADP L.S. 11954

RECOVERY TIE DRAWING



I hereby certify that this land surveying document was prepared and the related survey work was performed by me or under my direct personal supervision and that I am a duly licensed Land Surveyor under the laws of the State of Iowa.

Signed: Daniel J. Johnson Date: 9-8-99
Daniel J. Johnson, L.S. 11954
My license expires on or before December 31, 2000

Pages or sheets covered by this work:
(Entire submission unless specified here)

REASON FOR PREPARING CERTIFICATE

- A) THERE IS NO CERTIFICATE FOR THE CORNER ON FILE WITH THE RECORDER OF THE COUNTY IN WHICH THE CORNER IS LOCATED
- B) CORNER POSITION DIFFERS FROM THAT SHOWN IN THE PUBLIC RECORDS OF THE COUNTY IN WHICH THE CORNER IS LOCATED
- C) THE CORNER MONUMENT HAS BEEN REPLACED OR MODIFIED
- D) THE REFERENCE TIES REFERRED TO IN AN EXISTING PUBLIC RECORD ARE INCORRECT



GOVERNMENT CORNER PROPERTY CORNER FOUND 1/2" CAP SET 1" EXISTING FENCE LINE PROPERTY LINE	SHEET NO. <u>US PUBLIC LAND SURVEY RECORD</u>	HALL AND HALL ENGINEERS, INC. 209 29TH STREET N.E. CEDAR RAPIDS, IOWA 52402 (319) 362-9548
	PROJECT NO. <u>JONES COUNTY ACQUISITION PLAT</u>	
DATE <u>9-8-98</u>	SCALE <u>N.T.S.</u>	SHEET NO. <u>104</u> COUNTY <u>JONES</u>

854189-090899
85418K-090899
854186-090899
854180-090899