

99 SEP -8 AM 10:57

MARIE KRUTZFIELD
RECORDER 6.00 Pd

PREPARED BY HALL & HALL ENGINEERS, INC. 209 29TH STREET N.E. CEDAR RAPIDS, IOWA 52402 (319) 382-9548

SECTION CORNER CERTIFICATE

OF
LAND SURVEY MONUMENTS SITUATED IN SECTION 19, TOWNSHIP 85 NORTH,
RANGE 4 WEST, OF THE FIFTH PRINCIPAL MERIDIAN, JONES COUNTY, IOWA.

PREVIOUSLY RECORDED IN BOOK _____ AT PAGE _____

MONUMENT DESCRIPTION AND REMARKS:

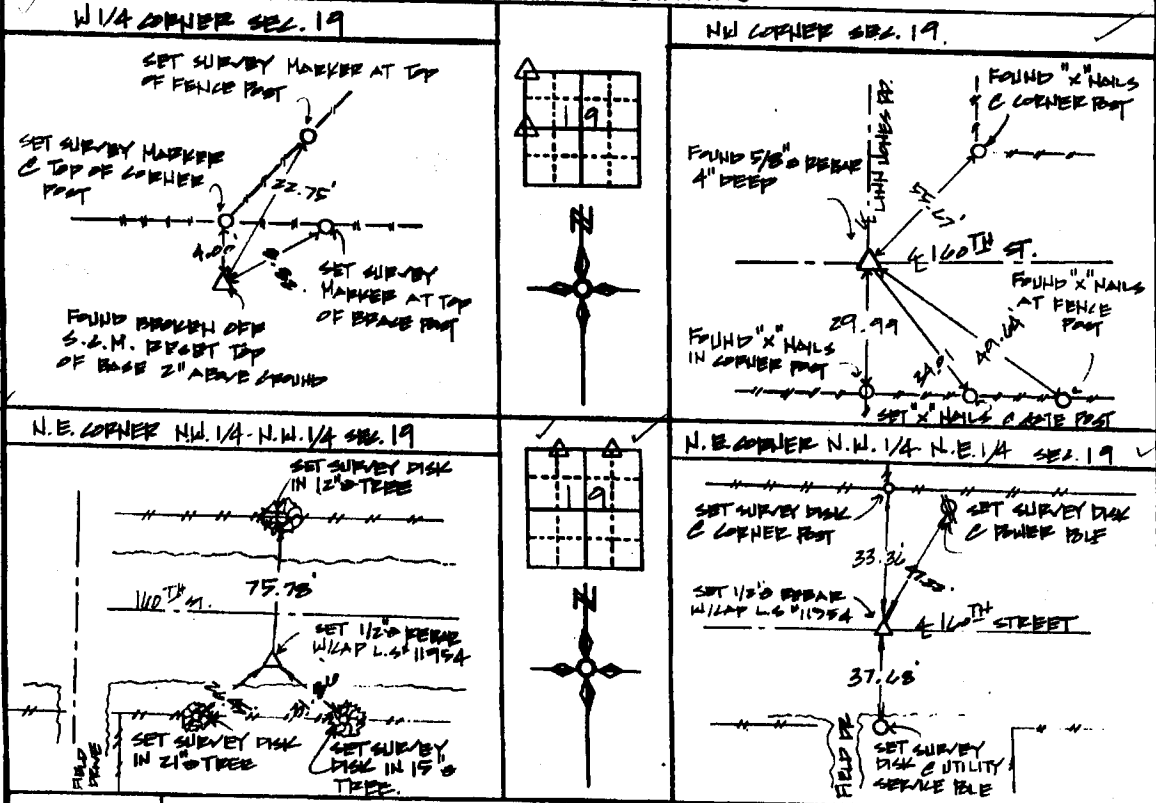
NW CORNER OF SEC. 19, FOUND 5/8" PEBBLE 4" BELOW THE SURFACE AT CENTERLINE OF
LINN JONES ROAD AND 160TH STREET.

W 1/4 CORNER OF SEC. 19, FOUND SECTION CORNER MONUMENT WITH TOP BROKEN OFF, DIA
UP BASE AND STRAIGHTENED, RESET TOP ON BASE 2" ABOVE GROUND.

N.E. CORNER N.W. 1/4 - N.W. 1/4 OF SEC. 19, SET 1/2" PEBBLE W/ CAP L.S. NO. 11954

N.E. CORNER N.W. 1/4 - N.E. 1/4 OF SEC. 19, SET 1/2" PEBBLE W/ CAP L.S. NO. 11954

RECOVERY TIE DRAWING



85419a-090899
85419k-090899
85419b-090899
85419d-090899

I hereby certify that this land surveying document was prepared and the related survey work was performed by me or under my direct personal supervision and that I am a duly Licensed Land Surveyor under the laws of the State of Iowa.

Signed: *Daniel J. Johnson* Date: 9-8-99
Daniel J. Johnson, L.S. 11954
My license expires on December 31, 2000

Pages or sheets covered by this book:
(Enter submission unless specified here)

- REASON FOR PREPARING CERTIFICATE
- A) THERE IS NO CERTIFICATE FOR THE CORNER ON FILE WITH THE RECORDER OF THE COUNTY IN WHICH THE CORNER IS LOCATED
 - B) CORNER POSITION DIFFERS FROM THAT SHOWN IN THE PUBLIC RECORDS OF THE COUNTY IN WHICH THE CORNER IS LOCATED.
 - C) THE CORNER MONUMENT HAS BEEN REPLACED OR MODIFIED
 - D) THE REFERENCE TIES REFERRED TO IN AN EXISTING PUBLIC RECORD ARE INCORRECT



LEGEND Δ GOVERNMENT CORNER ○ PROPERTY CORNER FOUND ○ 1/2" x 3/4" W/ L.S. CAP SET --- 1/4" W/ L.S. FENCE LINE - - - PROPERTY LINE	SET FILE US PUBLIC LAND SURVEY RECORD	HALL AND HALL ENGINEERS, INC. 209 29TH STREET N.E. CEDAR RAPIDS, IOWA 52402 (319) 382-9548
	PROJECT FILE JONES COUNTY ACQUISITION PLAT	
DATE 6.18.98	SCALE N.T.S.	COUNTY JONES