

2000 0353

FILED
RECORDERS OFFICE
JONES COUNTY IOWA

00 JAN 28 PM 1:07

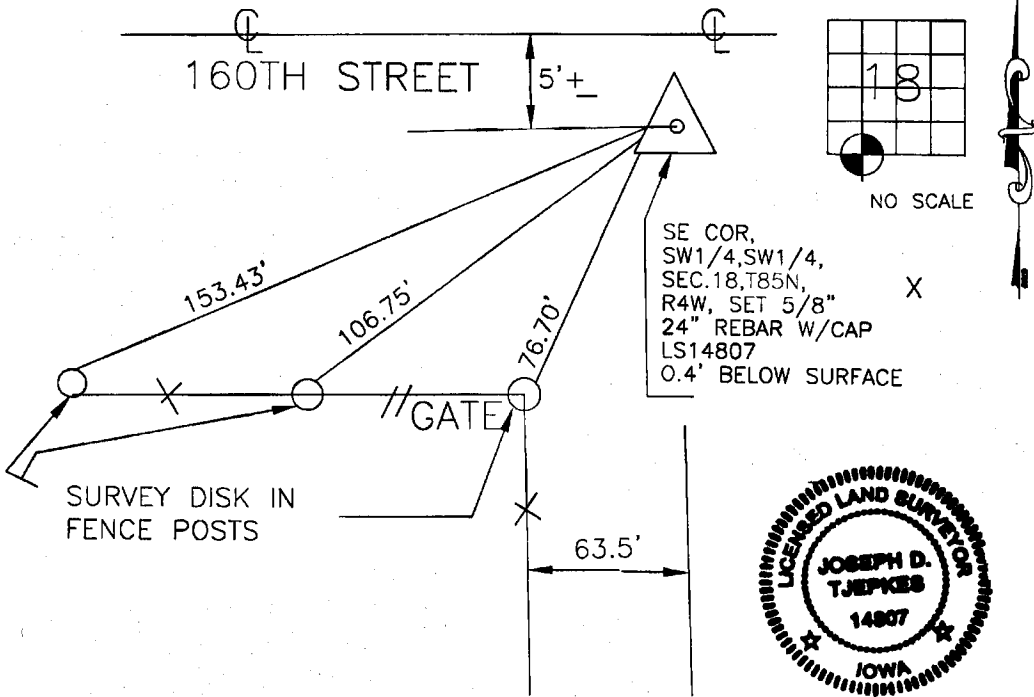
MARIE KRUTZFIELD
RECORDER *NO FEE*

6059

JONES COUNTY ENGINEER, 19501 HWY. 64, ANAMOSA, IOWA

UNITED STATES PUBLIC LAND SURVEY CORNER CERTIFICATE

LAND SURVEY MONUMENTS SITUATED IN SECTION 18, TOWNSHIP 85
NORTH, RANGE 4 WEST OF THE 5TH P.M., JONES COUNTY, IOWA



*271
6059*

PREVIOUSLY RECORDED IN BOOK 1999, PAGE 3217
 MONUMENT DESCRIPTION AND HOW ESTABLISHED HALL & HALL
PIN & CAP W/TIES DESTROYED DURING COUNTY ROAD CONSTRUCTION,
REPLACED WITH 5/8" X 24" REBAR AND LS CAP 14807 0.4'
BELOW ROAD SURFACE PER HALL & HALL ACQUISITION PLAT
 PARCEL NO. 98-106

I hereby declare that this plat, survey or report was made by me or under my direct personal supervision and that I am a duly registered Land Surveyor under the laws of the State of Iowa.

Signed: *J. D. Tjepkes* 1-25-2000

Joseph D. Tjepkes L.S. Iowa Reg. No. 14807
My Registration Renewal Date is December 31, 2000

CORNERS TO BE INDEXED

CORNER	SECTION	TOWNSHIP	RANGE
SE COR	18	T85N	R4W
SW1/4,			
SW1/4,			

JONES COUNTY ENGINEER
19501 HWY. 64,
ANAMOSA, IOWA

85419b-012500

