

FILED  
RECORDERS OFFICE  
JONES COUNTY IOWA

00 JAN 28 PM 1:20

MARIE KRUTZFIELD  
RECORDER *NO FEE*

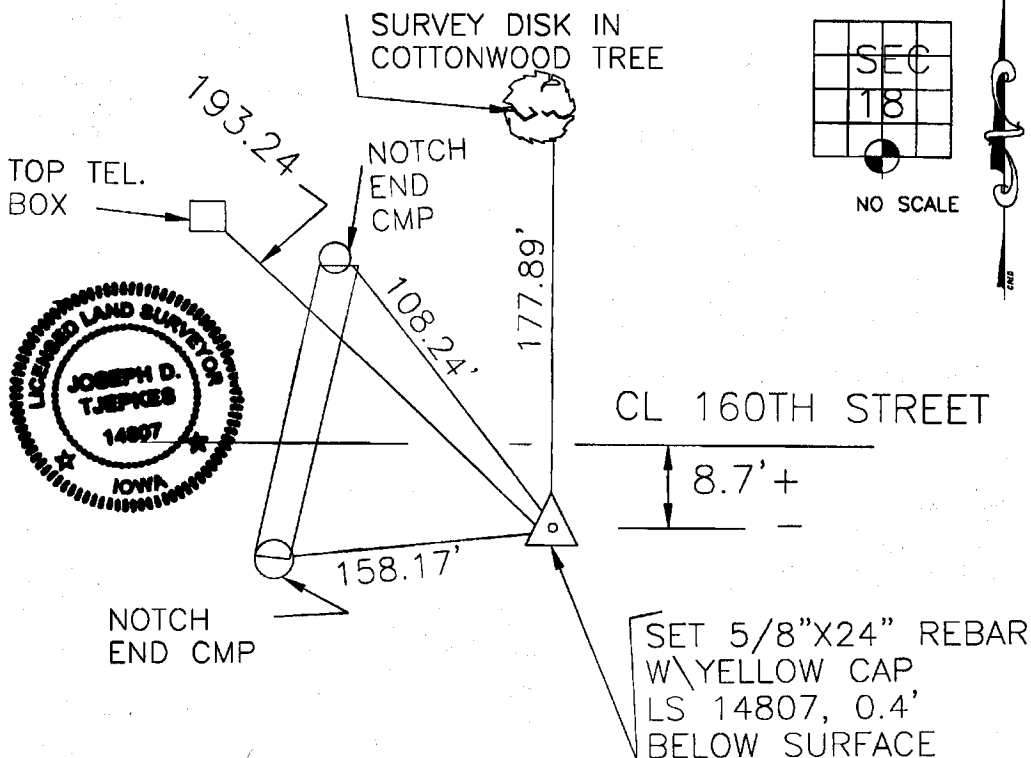
*699*

JONES COUNTY ENGINEER, 19501 HWY. 64, ANAMOSA, IOWA

# UNITED STATES PUBLIC LAND SURVEY CORNER CERTIFICATE

LAND SURVEY MONUMENTS SITUATED IN SECTION 18, TOWNSHIP 85  
NORTH, RANGE 4 WEST OF THE 5TH P.M., JONES COUNTY, IOWA

*N 37 19*  
*DN*  
*Card*



PREVIOUSLY RECORDED IN BOOK N/A, PAGE N/A  
 MONUMENT DESCRIPTION AND HOW ESTABLISHED 1/2" REBAR  
W/LS CAP 11954 ALONG WITH REF. TIES SET BY HALL & HALL  
 WERE DESTROYED DURING COUNTY ROAD CONSTRUCTION,  
 REMONUMENTED WITH 5/8" REBAR AND YELLOW CAP, LS  
14807 PER HALL & HALL ACQUISITION PLAT, PARCEL NO.  
98-105 AND 98-152

I hereby declare that this plat, survey or report was made by me or under my direct personal supervision and that I am a duly registered Land Surveyor under the laws of the State of Iowa.

Signed: *Joseph D. Tjepkes* 1-25-2000  
 Joseph D. Tjepkes L.S. Iowa Reg. No. 14807  
 My Registration Renewal Date is December 31, 2000

CORNERS TO BE INDEXED  
 CORNER SECTION TOWNSHIP RANGE  
 S-1/4 18 85N 4W  
 COR.

JONES COUNTY ENGINEER  
 19501 HWY. 64,  
 ANAMOSA, IOWA