

2000 0352

FILED
RECORDERS OFFICE
JONES COUNTY IOWA

00 JAN 28 PM 1:06

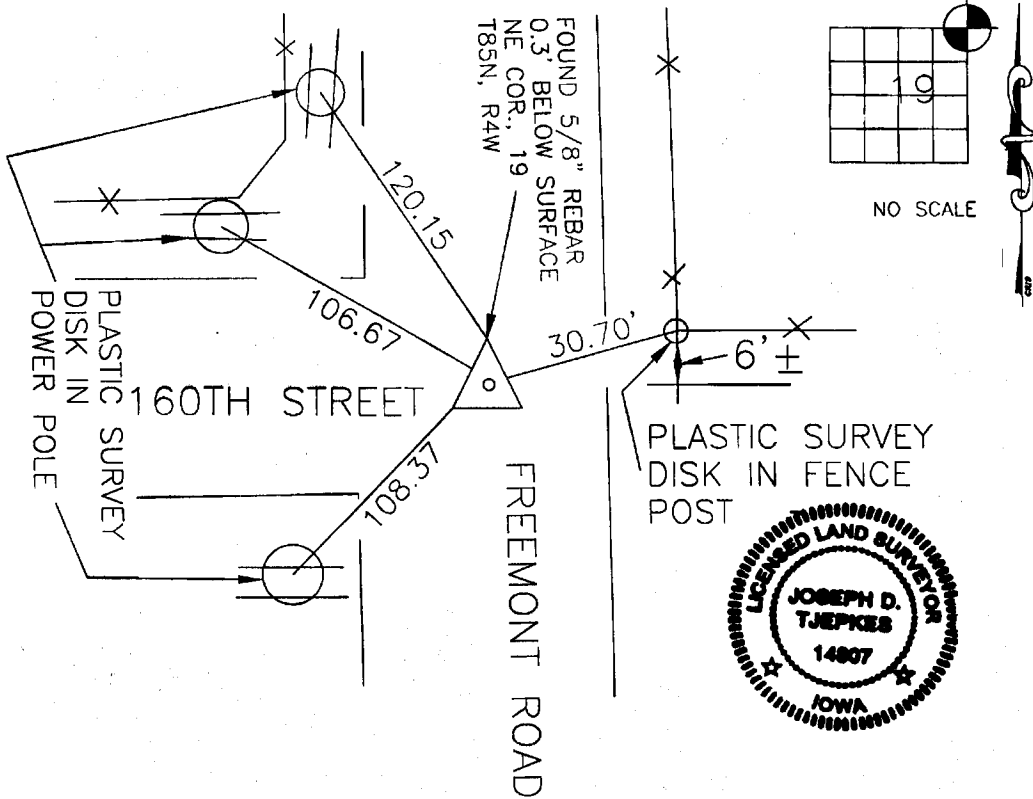
MARIE KRUTZFIELD
RECORDER NO FEE

6055

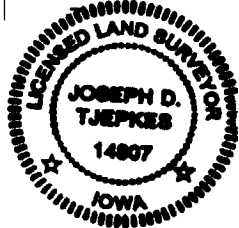
JONES COUNTY ENGINEER, 19501 HWY. 64, ANAMOSA, IOWA

UNITED STATES PUBLIC LAND SURVEY CORNER CERTIFICATE

LAND SURVEY MONUMENTS SITUATED IN SECTION 19, TOWNSHIP 85
NORTH, RANGE 4 WEST OF THE 5TH P.M., JONES COUNTY, IOWA



ON
Card



PREVIOUSLY RECORDED IN BOOK N/A, PAGE N/A
 MONUMENT DESCRIPTION AND HOW ESTABLISHED FOUND
5/8" REBAR 0.3' BELOW ROAD SURFACE

AS INDICATED ON HALL & HALL ACQUISITION
PLAT (PARCEL NO. 98-105). REFERENCE TIES
DESTROYED DURING COUNTY ROAD CONSTRUCTION

SET NEW REFERENCE TIES AS INDICATED.

I hereby declare that this plat, survey or report was made by me or under my direct personal supervision and that I am a duly registered Land Surveyor under the laws of the State of Iowa.

Signed: *Joseph D. Tjepkes* 1-25-2000

Joseph D. Tjepkes L.S. Iowa Reg. No. 14807
 My Registration Renewal Date is December 31, 2000

CORNERS TO BE INDEXED			
CORNER	SECTION	TOWNSHIP	RANGE
NE	19	85N	4W

JONES COUNTY ENGINEER
 19501 HWY. 64,
 ANAMOSA, IOWA

85419e-012500