

UNITED STATES PUBLIC LAND SURVEY CORNER CERTIFICATE

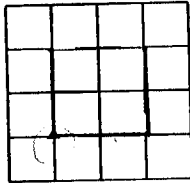
LAND SURVEY MONUMENTS SITUATED IN SECTION 21, TOWNSHIP 85 NORTH
RANGE 4 WEST OF THE 5TH P.M., _____ JONES _____ COUNTY, IOWA.

NO SCALE



NE CORNER

SW 1/4 SW 1/4

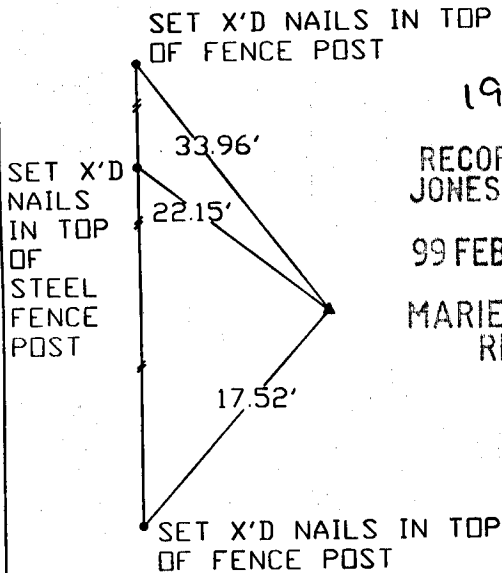
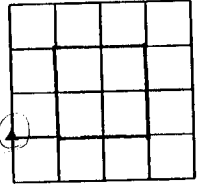


NO SCALE

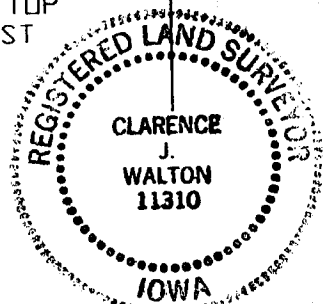
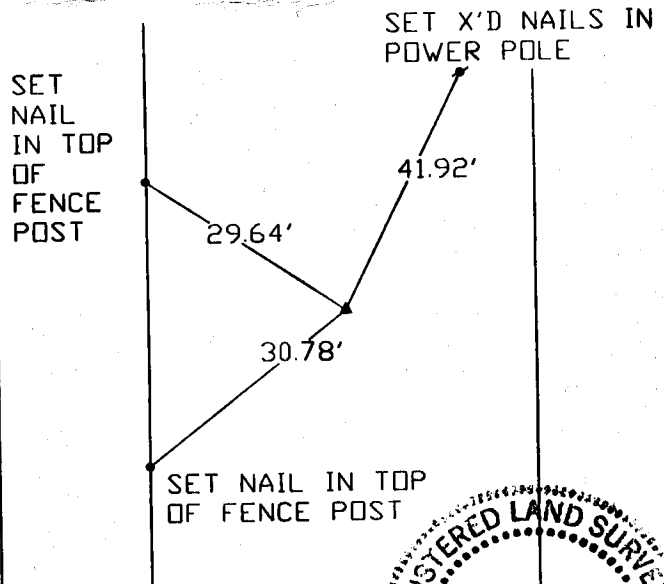


NW CORNER

SW 1/4 SW 1/4



1999 0733
FILED
RECORDERS OFFICE
JONES COUNTY IOWA
99 FEB 26 AM 10:16
MARIE KRUTZFIELD
RECORDER
6.00 pd



PREVIOUSLY RECORDED IN BOOK _____ PAGE _____

MONUMENT DESCRIPTION AND HOW ESTABLISHED _____

SET 1/2" REBAR WITH CAP #11310 AT INTERSECTION OF LINES FROM MID-POINTS OF N, S, E, & W LINES OF SW 1/4 SECTION 21

PREVIOUSLY RECORDED IN BOOK _____ PAGE _____

MONUMENT DESCRIPTION AND HOW ESTABLISHED _____

SET RR SPIKE IN ROAD 2" DEEP AT MID-POINT OF WEST LINE OF SW 1/4 SECTION 21

I hereby declare that this plat, survey or report was made by me or under my direct personal supervision and that I am a duly registered Land Surveyor under the laws of the State of Iowa.
Signed Clarence J. Walton Date 2/25/99
Clarence J. Walton L.S. Iowa Reg No. 11310
My Registration Renewal Date Is December 31, 1999

CORNERS TO BE INDEXED			
CORNER	SECTION	TOWNSHIP	RANGE
NE CORNER	21	T85N	R4W
SW 1/4 SW 1/4	21	T85N	R4W
NW CORNER	21	T85N	R4W
SW 1/4 SW 1/4	21	T85N	R4W

BRAIN ENGINEERING, INC.
777 10TH STREET
MARION, IOWA 52302
(319) 373-1318

854219-022599, 854204-022599

23599-10