

00 AUG -8 PM 3:21

MARIE KRUIZFIELD NO FEE

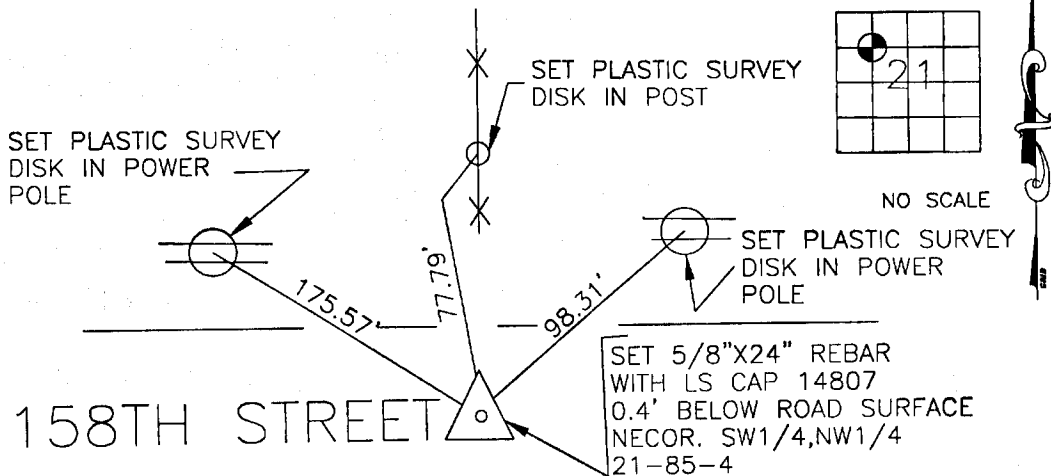
CORRECTION CERTIFICATE--SUPERSEDES CERTIFICATE FILED IN BOOK
2000, PAGE 0346, 1-28-2000

JONES COUNTY ENGINEER, 19501 HWY. 64, ANAMOSA, IOWA

PREPARED BY J.D. TJEPKES L.S.

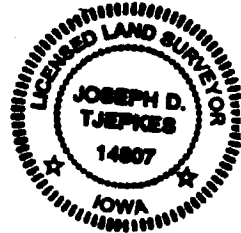
UNITED STATES PUBLIC LAND SURVEY CORNER CERTIFICATE

LAND SURVEY MONUMENTS SITUATED IN SECTION 21, TOWNSHIP 85
NORTH, RANGE 4 WEST OF THE 5TH P.M., JONES COUNTY, IOWA



Cass

(REFILED FOR CORRECTION)



PREVIOUSLY RECORDED IN BOOK 1999, PAGE 3209
 MONUMENT DESCRIPTION AND HOW ESTABLISHED RECORD _____
 MONUMENT AND HALL & HALL TIES DESTROYED DURING ROAD CONSTRUCTION. _____
 REMONUMENTED WITH 5/8"X24" REBAR WITH YELLOW CAP LS14807 (PER HALL &
 HALL ACQUISITION PLAT [PARCEL NO. 98-118]) 0.4' BELOW ROAD SURFACE AND
 SET NEW REFERENCE TIES AS INDICATED ABOVE.

I hereby declare that this plat, survey or report was made by me or under my direct personal supervision and that I am a duly registered Land Surveyor under the laws of the State of Iowa.

Signed:

J.D. Tjepkes 5-9-2000

Joseph D. Tjepkes L.S. Iowa Reg. No. 14807
My Registration Renewal Date is December 31, 2000

CORNERS TO BE INDEXED

CORNER	SECTION	TOWNSHIP	RANGE
NECOR	21	85N	4W
SW1/4			
NW1/4			

JONES COUNTY ENGINEER
19501 HWY. 64,
ANAMOSA, IOWA

2000 0346

FILED
RECORDERS OFFICE
JONES COUNTY IOWA

00 JAN 28 PM 1:00

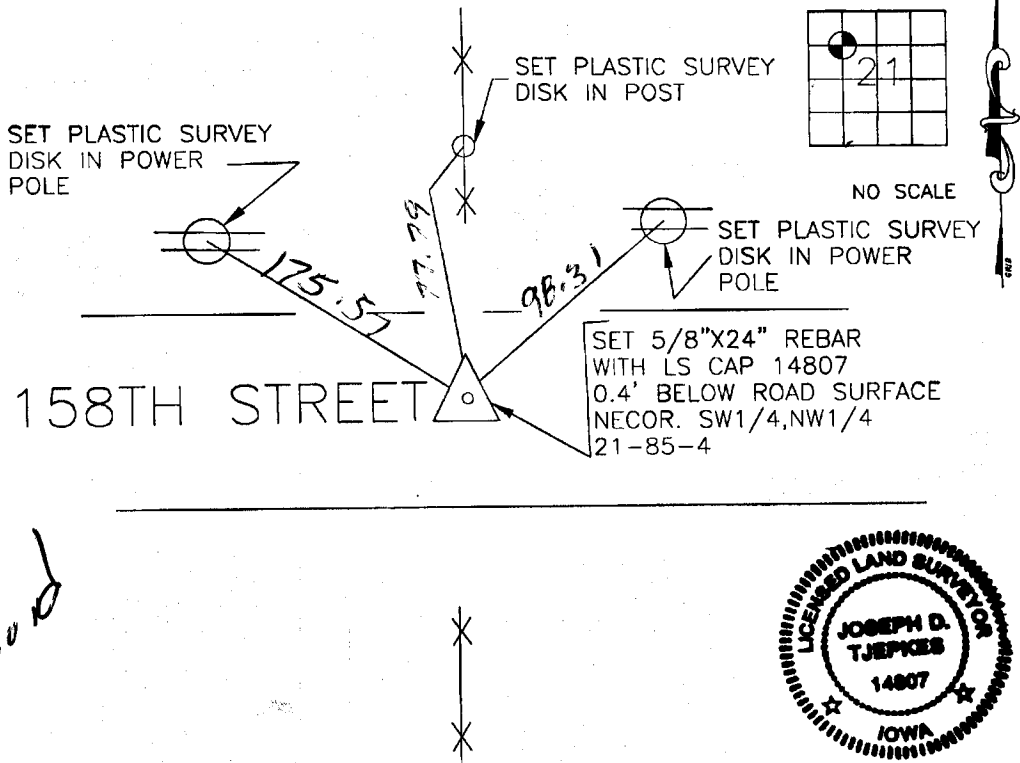
MARIE KRUTZFIELD
RECORDER *NO FEE*

6099

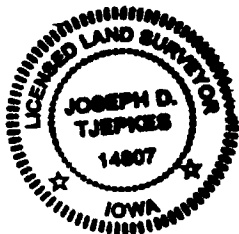
JONES COUNTY ENGINEER, 19501 HWY. 64, ANAMOSA, IOWA

UNITED STATES PUBLIC LAND SURVEY CORNER CERTIFICATE

LAND SURVEY MONUMENTS SITUATED IN SECTION 21, TOWNSHIP 85
NORTH, RANGE 4 WEST OF THE 5TH P.M., JONES COUNTY, IOWA



old cond



854219-012500

PREVIOUSLY RECORDED IN BOOK 1999, PAGE 3209
 MONUMENT DESCRIPTION AND HOW ESTABLISHED RECORD
 MONUMENT AND HALL & HALL TIES DESTROYED DURING ROAD CONSTRUCTION.
 REMONUMENTED WITH 5/8"X24" REBAR WITH YELLOW CAP LS14807 (PER HALL &
 HALL ACQUISITION PLAT [PARCEL NO. 98-118]) 0.4' BELOW ROAD SURFACE AND
 SET NEW REFERENCE TIES AS INDICATED ABOVE.

I hereby declare that this plat, survey or report was made by me or under my direct personal supervision and that I am a duly registered Land Surveyor under the laws of the State of Iowa.

Signed:

J. D. Tjepkes 1-25-2000
 Joseph D. Tjepkes L.S. Iowa Reg. No. 14807
 My Registration Renewal Date is December 31, 2000

CORNERS TO BE INDEXED

CORNER	SECTION	TOWNSHIP	RANGE
NECOR	21	85N	4W
SW1/4			
NW1/4			

JONES COUNTY ENGINEER
 19501 HWY. 64,
 ANAMOSA, IOWA

1999 3209

FILED
RECORDERS OFFICE
JONES COUNTY IOWA

99 SEP -8 AM 10:49

MARIE KRUTZFIELD
RECORDED 600fd

PREPARED BY HALL & HALL ENGINEERS, INC. 209 20TH STREET N.E. CEDAR RAPIDS, IOWA 52402 (319) 362-9548

SECTION CORNER CERTIFICATE

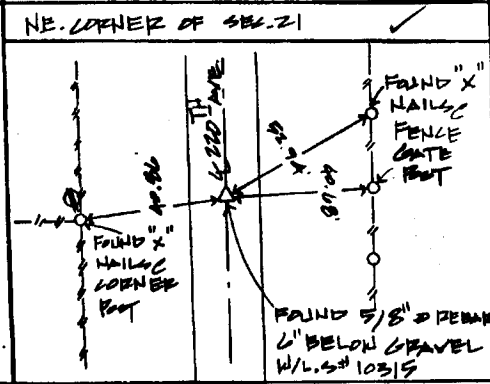
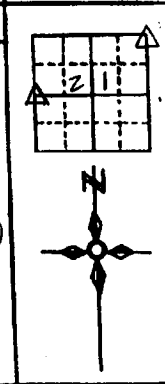
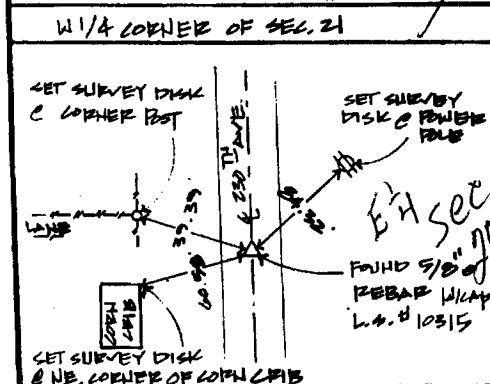
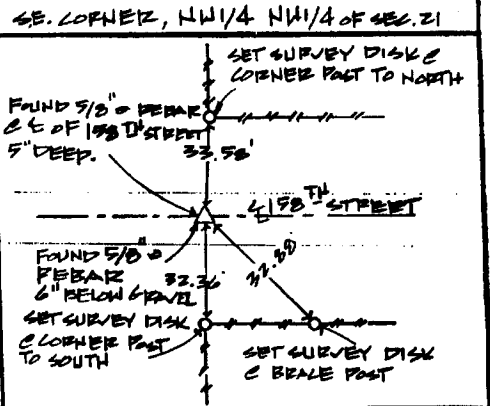
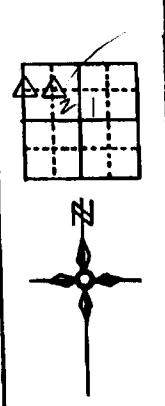
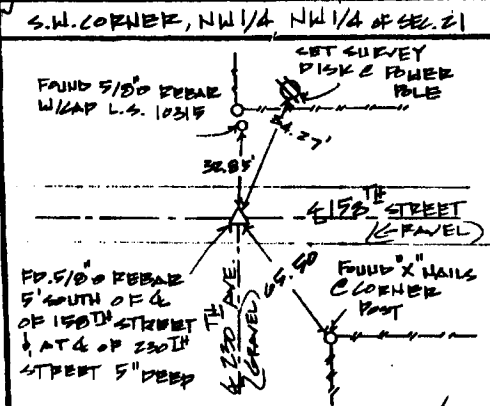
OF
LAND SURVEY MONUMENTS SITUATED IN SECTION 21, TOWNSHIP 35 NORTH,
RANGE 4 WEST, OF THE FIFTH PRINCIPAL MERIDIAN, JONES COUNTY, IOWA.

PREVIOUSLY RECORDED IN BOOK _____ AT PAGE _____

MONUMENT DESCRIPTION AND REMARKS:

S.W. CORNER N.W. 1/4 - N.W. 1/4 OF SECTION 21, FOUND 5/8" REBAR
S.E. CORNER N.W. 1/4 - N.W. 1/4 OF SECTION 21, FOUND 5/8" REBAR
E 1/4 CORNER OF SECTION 21, FOUND 5/8" REBAR W/ CAP L.S. # 10315
NE CORNER OF SECTION 21, FOUND 5/8" REBAR W/ CAP L.S. # 10315

RECOVERY TIE DRAWING



I hereby certify that this land surveying document was prepared and the related survey work was performed by me or under my direct personal supervision and that I am a duly Licensed Land Surveyor under the laws of the State of Iowa.
Signed: Daniel J. Johnson Date: 9-8-99
Daniel J. Johnson, L.S. 1954
My license renewed on December 31, 2002
Pages or sheets covered by this seal:
(Entire submission unless specified here)

REASON FOR PREPARING CERTIFICATE:
 A) THERE IS NO CERTIFICATE FOR THE CORNER ON FILE WITH THE RECORDER OF THE COUNTY IN WHICH THE CORNER IS LOCATED
 B) CORNER POSITION DIFFERS FROM THAT SHOWN IN THE PUBLIC RECORDS OF THE COUNTY IN WHICH THE CORNER IS LOCATED
 C) THE CORNER MONUMENT HAS BEEN REPLACED OR MODIFIED
 D) THE REFERENCE TIES REFERRED TO IN AN EXISTING PUBLIC RECORD ARE INCORRECT

854219-090899
854205-090899
85421e-090899
854200-090899

LEGEND △ GOVERNMENT CORNER ○ PROPERTY CORNER FOUND ○ 1/2" x 3/4" w/ L.S. CAP SET --- 185' FENCE LINE - - - PROPERTY LINE	SHEET 011 PROJECT JONES COUNTY ACQUISITION PLATS	HALL AND HALL ENGINEERS, INC. 209 20TH STREET N.E. CEDAR RAPIDS, IOWA 52402 (319) 362-9548
	DATE 7-2-98 SCALE H.T.S.	NO. 003 COUNTY JONES