

2000 0359

FILED  
RECORDERS OFFICE  
JONES COUNTY IOWA

00 JAN 28 PM 1:21

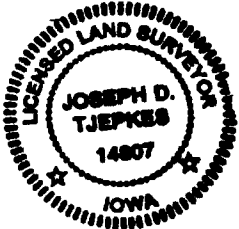
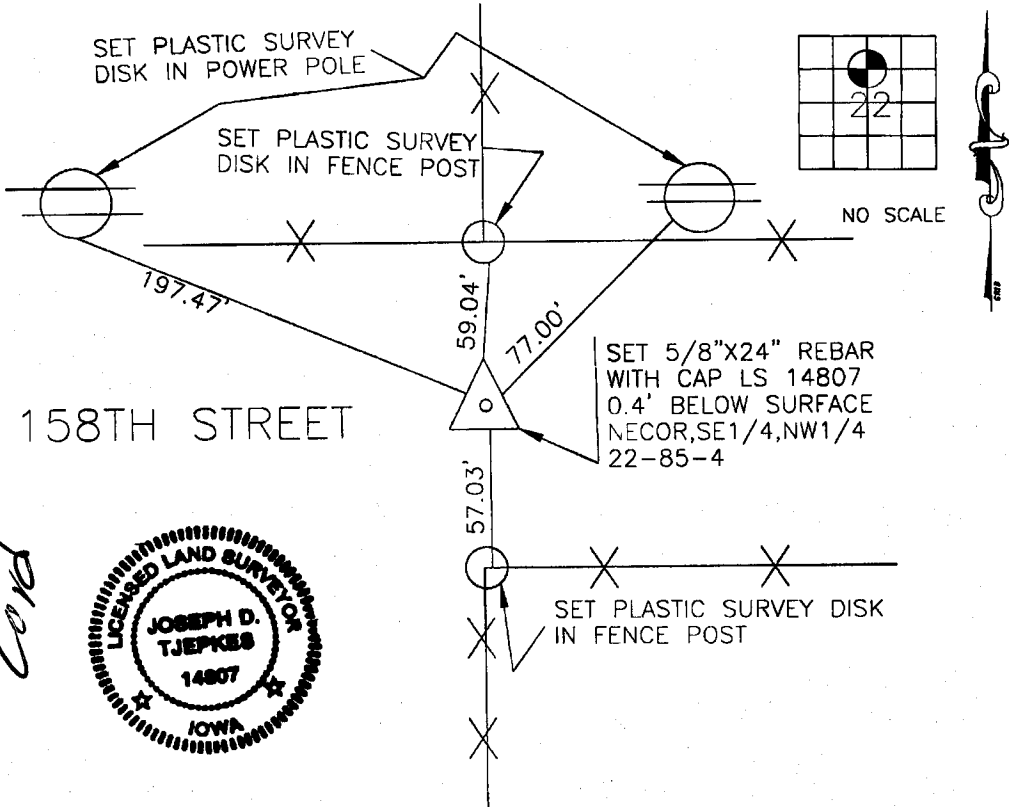
MARIE KRUTZFIELD  
RECORDER *NO FEE*

*0359*

JONES COUNTY ENGINEER, 19501 HWY. 64, ANAMOSA, IOWA

# UNITED STATES PUBLIC LAND SURVEY CORNER CERTIFICATE

LAND SURVEY MONUMENTS SITUATED IN SECTION 22 TOWNSHIP 85  
NORTH, RANGE 4 WEST OF THE 5TH P.M., JONES COUNTY, IOWA



PREVIOUSLY RECORDED IN BOOK 1999, PAGE 3218  
 MONUMENT DESCRIPTION AND HOW ESTABLISHED HALL & HALL  
HALL PIN AND CAP ALONG WITH REFERENCE TIES DESTROYED DURING ROAD  
CONSTRUCTION, REMONUMENTED WITH 5/8"X24" REBAR AND LS CAP 14807  
PER HALL & HALL ACQUISITION PLAT (PARCEL NO. 98-125), SET NEW REFERENCE  
TIES AS INDICATED ABOVE.

I hereby declare that this plat, survey or report was made by me or under my direct personal supervision and that I am a duly registered Land Surveyor under the laws of the State of Iowa.

Signed: *Joseph D. Tjepkes* 1-25-2000  
 Joseph D. Tjepkes L.S. Iowa Reg. No. 14807  
 My Registration Renewal Date is December 31, 2000

CORNERS TO BE INDEXED  
 CORNER SECTION TOWNSHIP RANGE  
 NECOR 22 85N 4W  
 SE1/4  
 NW1/4

JONES COUNTY ENGINEER  
 19501 HWY. 64,  
 ANAMOSA, IOWA

*85522h-012500*

1999 3218

FILED  
RECORDERS OFFICE  
JONES COUNTY IOWA

99 SEP -8 AM 10:58

MARIE KRUTZFIELD  
RECORDER 6.00 Pd

PREPARED BY HALL & HALL ENGINEERS, INC. 209 29TH STREET N.E. CEDAR RAPIDS, IOWA 52402 (319) 362-9548

SECTION CORNER CERTIFICATE  
OF

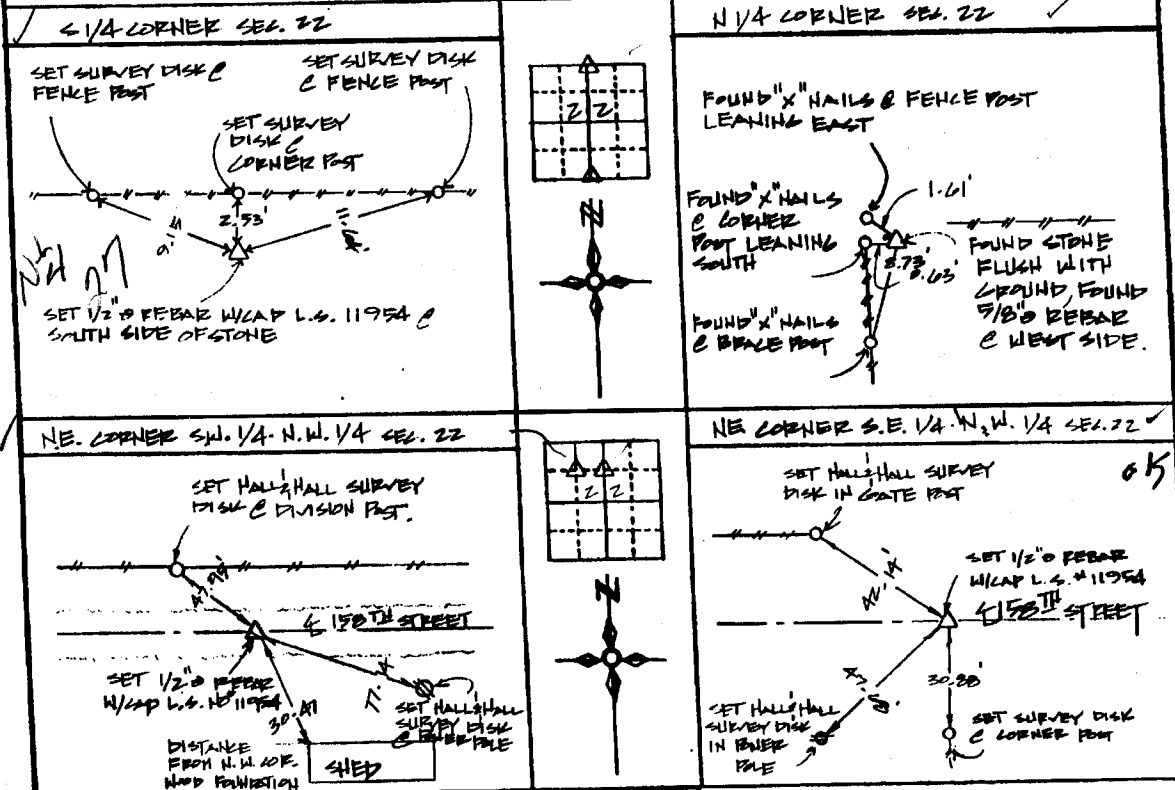
LAND SURVEY MONUMENTS SITUATED IN SECTION 22, TOWNSHIP 85 NORTH,  
RANGE 4 WEST, OF THE FIFTH PRINCIPAL MERIDIAN, JONES COUNTY, IOWA.

PREVIOUSLY RECORDED IN BOOK \_\_\_\_\_ AT PAGE \_\_\_\_\_

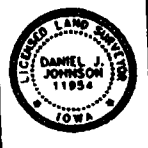
MONUMENT DESCRIPTION AND REMARKS:

S/4 CORNER OF SEC. 22, SET 1/2" PEBBLE W/ CAP L.S. NO 11954  
N/4 CORNER OF SEC. 22, FOUND STONE FLUSH WITH GROUND, FOUND 5/8" PEBBLE @ WEST SIDE  
N.E. CORNER S.W. 1/4 - N.W. 1/4 OF SEC. 22, SET 1/2" PEBBLE W/ CAP L.S. NO 11954  
N.E. CORNER S.E. 1/4 - N.W. 1/4 OF SEC. 22, SET 1/2" PEBBLE W/ CAP L.S. NO 11954

RECOVERY TIE DRAWING



85422c-090899  
85427c-090899  
85422g-090899  
85422h-090899



I hereby certify that this land surveying document was prepared and the related survey work was performed by me or under my direct personal supervision and that I am a duly Licensed Land Surveyor under the laws of the State of Iowa.  
Date: 9-8-99  
Signed: Daniel J. Johnson  
Daniel J. Johnson, L.S. 11954  
My license renewed 2006 to December 31, 2000  
Pages or sheets covered by this cert: \_\_\_\_\_  
(Entire submission unless specified here)

- REASON FOR PREPARING CERTIFICATE
- A) THERE IS NO CERTIFICATE FOR THE CORNER ON FILE WITH THE RECORDER OF THE COUNTY IN WHICH THE CORNER IS LOCATED
  - B) CORNER POSITION DIFFERS FROM THAT SHOWN IN THE PUBLIC RECORDS OF THE COUNTY IN WHICH THE CORNER IS LOCATED
  - C) THE CORNER MONUMENT HAS BEEN REPLACED OR MODIFIED
  - D) THE REFERENCE TIES REFERRED TO IN AN EXISTING PUBLIC RECORD ARE INCORRECT

GOVERNMENT CORNER PROPERTY CORNER (OLD) 1/2" 130° W/ L.S. CAP SET EXISTING FENCE LINE PROPERTY LINE	SHEET NO. <u>US PUBLIC LAND SURVEY RECORD</u>		HALL AND HALL ENGINEERS, INC. 209 29TH STREET N.E. CEDAR RAPIDS, IOWA 52402 (319) 362-9548
	PROJECT FILE: <u>JONES COUNTY ACQUISITION PLAT</u>	SCALE: <u>N.T.S.</u>	