

1999 3212
 FILED
 RECORDERS OFFICE
 JONES COUNTY IOWA

99 SEP -8 AM 10: 52

MARIE KRUTZFIELD
 RECORDER 600 Pd

PREPARED BY HALL & HALL ENGINEERS, INC. 209 29TH STREET N.E. CEDAR RAPIDS, IOWA 52402 (319) 382-0640

SECTION CORNER CERTIFICATE
 OF

LAND SURVEY MONUMENTS SITUATED IN SECTION 22, TOWNSHIP 55 NORTH,
 RANGE 4 WEST, OF THE FIFTH PRINCIPAL MERIDIAN, LOWES COUNTY, IOWA.

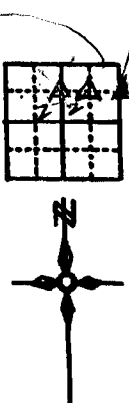
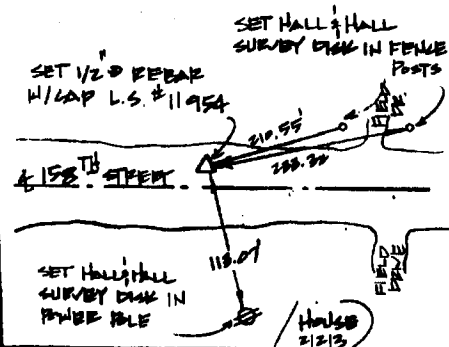
PREVIOUSLY RECORDED IN BOOK _____ AT PAGE _____

MONUMENT DESCRIPTION AND REMARKS:

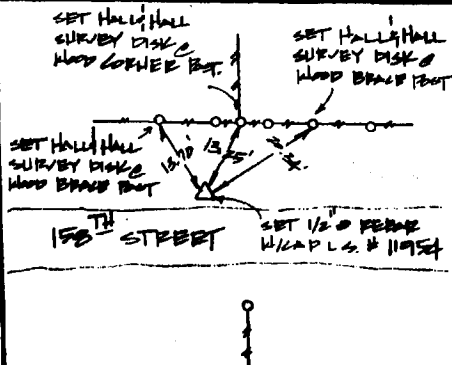
N.E. CORNER S.W. 1/4 - N.E. 1/4 SET 1/2" PEBBLE W/ CAP L.S. # 11954
 N.E. CORNER S.E. 1/4 - N.E. 1/4 SET 1/2" PEBBLE W/ CAP L.S. # 11954

RECOVERY TIE DRAWING

N.E. CORNER S.W. 1/4 - N.E. 1/4 SEC. 22



N.E. CORNER S.E. 1/4 - N.E. 1/4 SEC. 22



I hereby certify that this land surveying document was prepared and the related survey work was performed by me or under my direct personal supervision and that I am a duly Licensed Land Surveyor under the laws of the State of Iowa.
 Date: 9-8-99
 Donald J. Johnson, L.S. # 11954
 My license renewed date is December 31, 2000
 Pages or sheets covered by this seal
 (Entire submission unless specified here)

REASON FOR PREPARING CERTIFICATE
 A) THERE IS NO CERTIFICATE FOR THE CORNER ON FILE WITH THE RECORDER OF THE COUNTY IN WHICH THE CORNER IS LOCATED
 B) CORNER POSITION DIFFERS FROM THAT SHOWN IN THE PUBLIC RECORDS OF THE COUNTY IN WHICH THE CORNER IS LOCATED
 C) THE CORNER MONUMENT HAS BEEN REPLACED OR MODIFIED
 D) THE REFERENCE TIES REFERRED TO IN AN EXISTING PUBLIC RECORD ARE INCORRECT

GOVERNMENT CORNER PROPERTY CORNER FOUND 1/4" CAP OF L.S. CAP SET EXISTING FENCE LINE PROPERTY LINE	SHEET TITLE: US PUBLIC LAND SURVEY RECORD PROJECT NAME: LOWES COUNTY ACQUISITION PLATS	HALL AND HALL ENGINEERS, INC. 209 29TH STREET N.E. CEDAR RAPIDS, IOWA 52402 (319) 382-0640
	DATE: 12-10-98 SCALE: N.T.S. DRAWN BY: T.M.B. CHECKED BY: D.J.J. DATE: 12-10-98 SHEET NO: 143 TOTAL SHEETS: 1525	

85422i-090899
 85422j-090899