

2000 0345

FILED
RECORDERS OFFICE
JONES COUNTY IOWA

00 JAN 28 PM 12:59

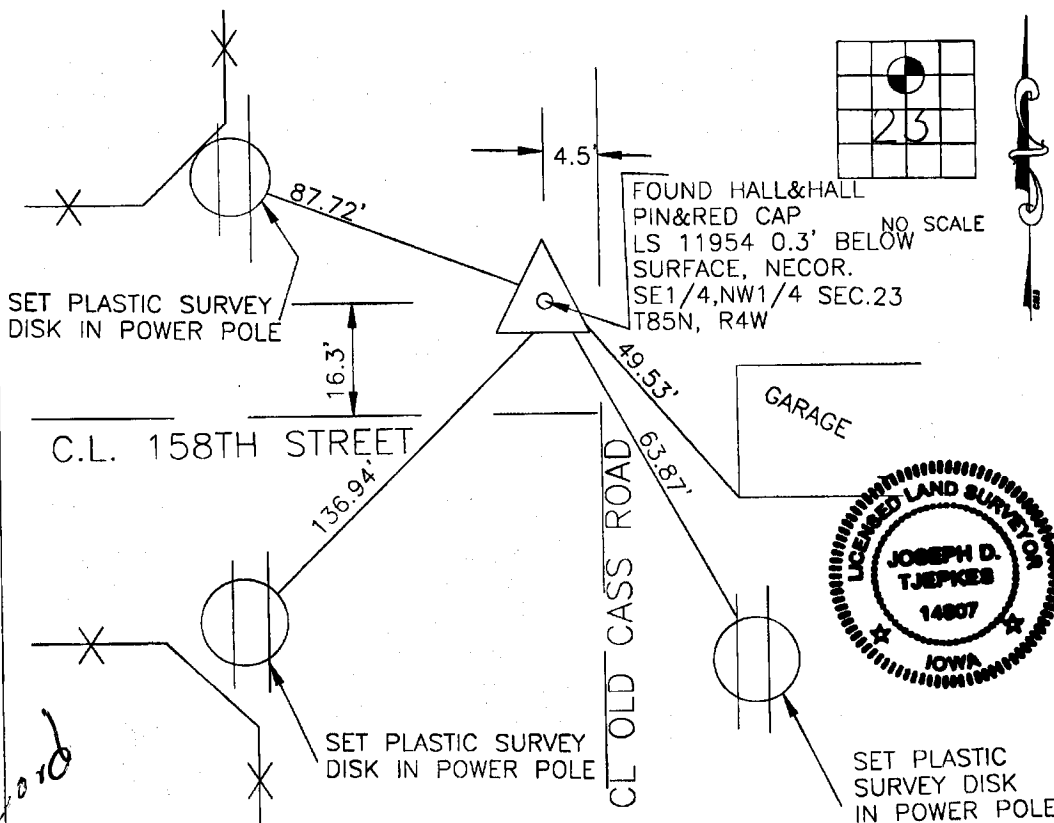
MARIE KRUTZFIELD
RECORDER NO FEE

6055

JONES COUNTY ENGINEER, 19501 HWY. 64, ANAMOSA, IOWA

UNITED STATES PUBLIC LAND SURVEY CORNER CERTIFICATE

LAND SURVEY MONUMENTS SITUATED IN SECTION 23, TOWNSHIP 85
NORTH, RANGE 4 WEST OF THE 5TH P.M., JONES COUNTY, IOWA



85423h-012500

on
cold

PREVIOUSLY RECORDED IN BOOK 1999, PAGE 3223
 MONUMENT DESCRIPTION AND HOW ESTABLISHED FOUND
HALL & HALL RED CAP LS 11954 0.3' BELOW ROAD SURFACE PER HALL & HALL
ACQUISITION PLAT (PARCEL NO. 98-130), HALL & HALL REFERENCE TIES
DESTROYED DURING ROAD CONSTRUCTION, RESET NEW REFERENCE TIES AS
INDICATED ABOVE.

I hereby declare that this plot, survey or report was made by me or under my direct personal supervision and that I am a duly registered Land Surveyor under the laws of the State of Iowa.

Signed:

Joseph D. Tjepkes 1-25-2000

Joseph D. Tjepkes L.S. Iowa Reg. No. 14807
My Registration Renewal Date is December 31, 2000

CORNERS TO BE INDEXED

CORNER	SECTION	TOWNSHIP	RANGE
NE COR.	23	85N	4W
SE 1/4			
NW 1/4			

JONES COUNTY ENGINEER
19501 HWY. 64,
ANAMOSA, IOWA

1999 3223
FILED
RECORDERS OFFICE
JONES COUNTY IOWA

99 SEP -8 AM 11:03

MARIE KRUTZFIELD
RECORDER 600PH

PREPARED BY HALL & HALL ENGINEERS, INC. 209 20TH STREET N.E. CEDAR RAPIDS, IOWA 52402 (319) 382-9548
SECTION CORNER CERTIFICATE

OF
LAND SURVEY MONUMENTS SITUATED IN SECTION 23, TOWNSHIP 85 NORTH,
RANGE 4 WEST, OF THE FIFTH PRINCIPAL MERIDIAN, JONES COUNTY, IOWA.

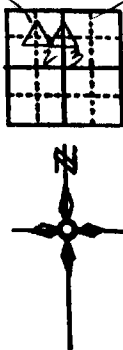
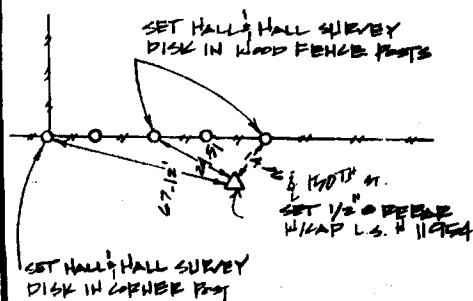
PREVIOUSLY RECORDED IN BOOK _____ AT PAGE _____

MONUMENT DESCRIPTION AND REMARKS:

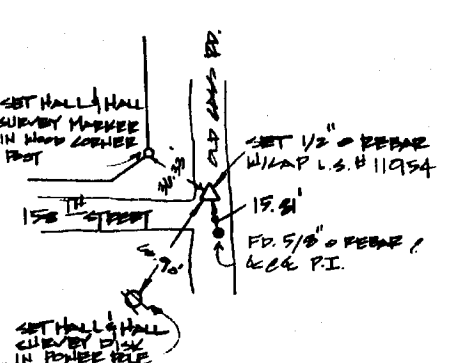
N.E. CORNER S.W. 1/4 - N.W. 1/4 OF SECTION 23, SET 1/2" REBAR W/ CAP L.S.# 11954
N.E. CORNER S.E. 1/4 - N.W. 1/4 OF SECTION 23, SET 1/2" REBAR W/ CAP L.S.# 11954
E 1/4 CORNER OF SECTION 23, SET 1/2" REBAR W/ CAP L.S.# 11954
N 1/4 CORNER OF SECTION 23, SET 1/2" REBAR W/ CAP L.S.# 11954

RECOVERY TIE DRAWING

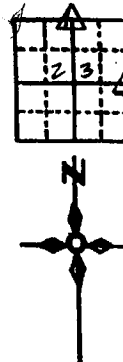
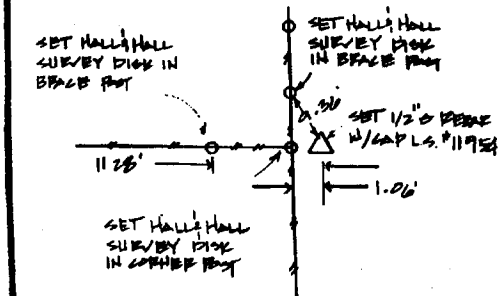
N.E. CORNER S.W. 1/4 - N.W. 1/4 SEC. 23



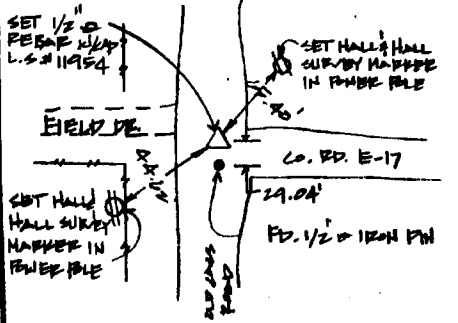
N.E. CORNER SE 1/4 - N.W. 1/4 SEC. 23 ✓



E 1/4 CORNER SEC. 23 ✓



N 1/4 CORNER OF SEC. 23 ✓



85423g - 090899
85423h - 090899
85423c - 090899
85423o - 090899



I hereby certify that this land surveying document was prepared and the related survey work was performed by me or under my direct personal supervision and that I am a duly Licensed Land Surveyor under the laws of the State of Iowa.
Signed: Daniel J. Johnson Date: 9-8-99
Daniel J. Johnson, L.S., 11954
My license renewed date is December 31, 2000
Pages or sheets covered by this book
(Entire submission unless specified here)

REASON FOR PREPARING CERTIFICATE:
 A) THERE IS NO CERTIFICATE FOR THE CORNER ON FILE WITH THE RECORDER OF THE COUNTY IN WHICH THE CORNER IS LOCATED
 B) CORNER POSITION DIFFERS FROM THAT SHOWN IN THE PUBLIC RECORDS OF THE COUNTY IN WHICH THE CORNER IS LOCATED.
 C) THE CORNER MONUMENT HAS BEEN REPLACED OR MODIFIED
 D) THE REFERENCE TIES REFERRED TO IN AN EXISTING PUBLIC RECORD ARE INCORRECT

1/4 SECTION CORNER 1/4 PROPERTY CORNER FOUND 1/4 1/2" CAP W/ L.S. CAP SET 1/4 1/2" CAP W/ L.S. CAP SET 1/4 1/2" CAP W/ L.S. CAP SET	SHEET 111 US PUBLIC LAND SURVEY RECORD	HALL AND HALL ENGINEERS, INC. 209 20TH STREET N.E. CEDAR RAPIDS, IOWA 52402 (319) 382-9548
	PROJECT JONES COUNTY ACQUISITION PLATS	

DATE 12/15/98 SCALE 4"=1'