

Jones County Marie Krutzfield Recorder  
 Fee Book 2012 1642  
 06/07/2012 @0313PM # Pages 2  
 ZSC SEC COR CERT  
 Total Fees: \$0.00

PREPARED BY  
 CLARENCE J. WALTON, JONES COUNTY ENGINEER'S OFFICE, 19501 HWY. 64, ANAMOSA, IOWA, 52205 (319) 462-3785

# UNITED STATES PUBLIC LAND SURVEY CORNER CERTIFICATE

LAND SURVEY MONUMENTS SITUATED IN SECTION 24, TOWNSHIP 85 NORTH,  
 RANGE 4 WEST OF THE 5TH PRINCIPAL MERIDIAN, JONES COUNTY, IOWA.

STATE PLANE COORDINATE  
 NAD 83 IOWA NORTH  
 N 3531360.58  
 E 5529097.58

CORNER SECTION TOWNSHIP RANGE  
 N 1/4 CORNER 24 T85N R4W



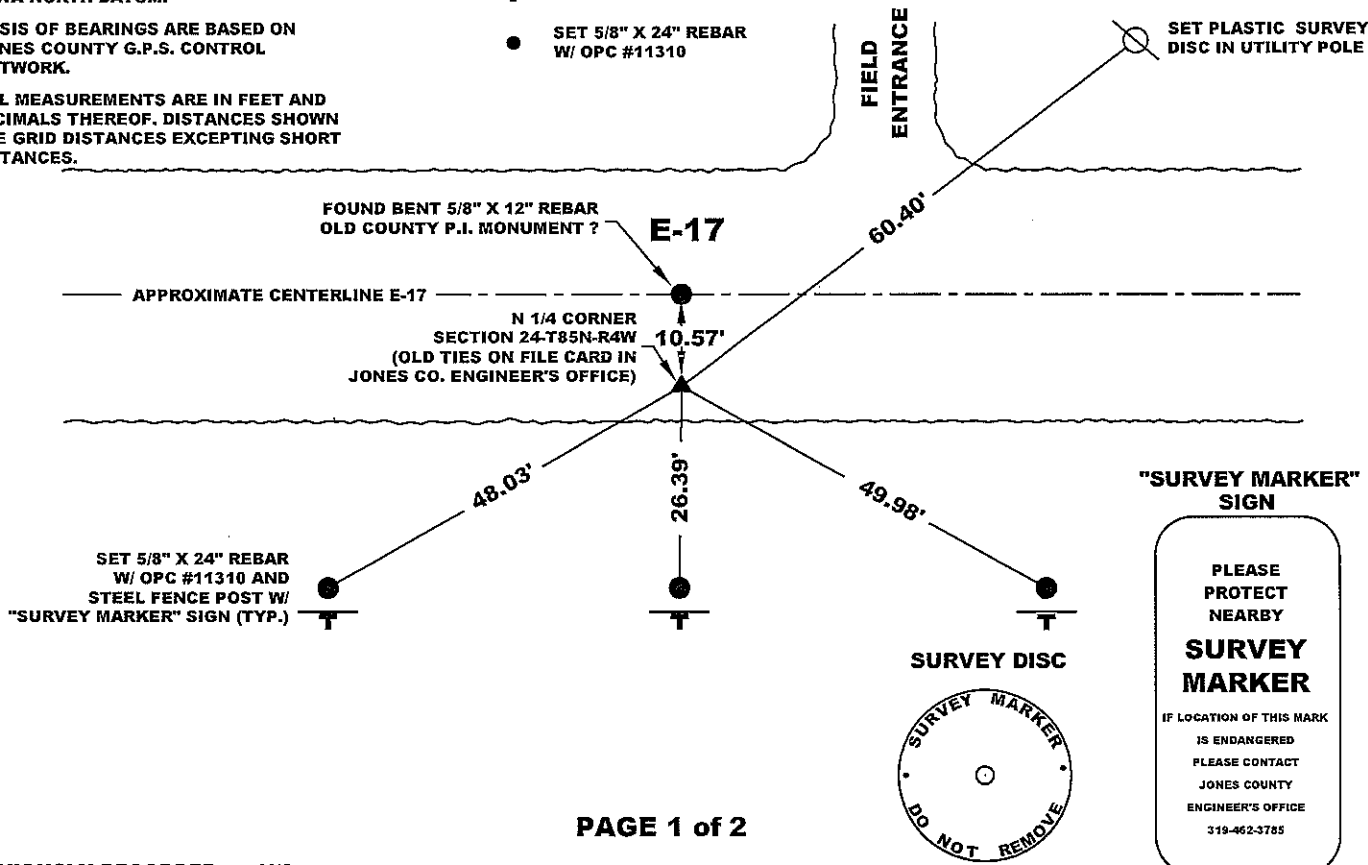
NO SCALE

NOTES:

- 1) THE STATE PLANE COORDINATES AS SHOWN ARE FOR CONVENIENCE ONLY. THE TIES AS SHOWN SHOULD BE USED TO REPLACE THE CORNER, IF DESTROYED.
- 2) COORDINATES AS SHOWN ARE GRID COORDINATES AND BASED ON JONES COUNTY G.P.S. CONTROL NETWORK WHICH IN TURN IS BASED ON NAD 83 IOWA NORTH DATUM.
- 3) BASIS OF BEARINGS ARE BASED ON JONES COUNTY G.P.S. CONTROL NETWORK.
- 4) ALL MEASUREMENTS ARE IN FEET AND DECIMALS THEREOF. DISTANCES SHOWN ARE GRID DISTANCES EXCEPTING SHORT DISTANCES.

LEGEND

- OPC ORANGE PLASTIC CAP
- ( ) RECORDED AS
- SET STEEL FENCE POST W/ "SURVEY MARKER" SIGN
- SET 5/8" X 24" REBAR W/ OPC #11310



PAGE 1 of 2

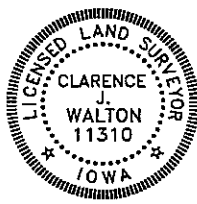
"SURVEY MARKER" SIGN

PLEASE PROTECT NEARBY  
**SURVEY MARKER**  
 IF LOCATION OF THIS MARK IS ENDANGERED PLEASE CONTACT JONES COUNTY ENGINEER'S OFFICE 319-462-3785



PREVIOUSLY RECORDED   N/A  

MONUMENT DESCRIPTION AND HOW ESTABLISHED ON 6/5/2012, RALPH SCHAEFFER CALLED JONES COUNTY ENGINEER'S OFFICE TO REPORT A CONCRETE MONUMENT HAD BEEN BROKEN OFF AND WAS LYING ON THE ROAD TOP. HE SAVED THE PIECES. NO TIES OF RECORD. OLD TIES ARE ON FILE IN JONES COUNTY ENGINEER'S OFFICE ON A 3" X 5" NOTECARD DATED 1/5/1936. THE MONUMENT WAS A 4"X4"X4" CONCRETE W.P.A. POST WITH A BRASS DISC CENTERED ON TOP. MONUMENT WAS BROKEN INTO 3 MAJOR PIECES: THE TOP 4" WITH THE DISC (A CORNER WAS GONE), A ± 17" MID-SECTION PIECE, AND THE REMAINDER. DUG OUT MONUMENT AND FOUND STONE PER NOTECARD TIES. STONE WAS LIMESTONE BROKEN INTO 3 MAJOR PIECES UNDOUBTEDLY BY WEIGHT OF MONUMENT AND ROAD TRAFFIC BEARING DOWN ON MONUMENT. LOWERED STONE AND MONUMENT. BRACED MONUMENT WITH 4-5/8"X48" REBAR. SET 5/8" X 12" REBAR WITH ORANGE PLASTIC CAP #11310 ON TOP OF MONUMENT CAP AS TOP WAS 19" BELOW PRESENT ROAD SURFACE.  
 CONTINUED ON PAGE 2 OF 2. FIELD BOOK MISC. 2012, PAGE 159. DATE OF SURVEY: 6/6/12



I hereby certify that this land surveying document and the related survey work was performed by me or under my direct personal supervision and that I am a duly registered Land Surveyor under the laws of the State of Iowa.

Signed: *Clarence J. Walton* 6/7/12  
 Clarence J. Walton, L.S.  
 My Registration Renewal Date is December 31, 2013  
 Iowa License Number 11310

Pages or sheets covered by this seal: 1 of 2.

- A. THERE IS NO CERTIFICATE FOR THE CORNER ON FILE WITH THE RECORDER OF THE COUNTY IN WHICH THE CORNER IS LOCATED.
- B. THE CORNER MONUMENT HAS BEEN REPLACED OR MODIFIED.
- C. THE SURVEYOR IN RESPONSIBLE CHARGE OF THE LAND SURVEYING ACCEPTS A CORNER POSITION THAT DIFFERS FROM THAT SHOWN IN THE PUBLIC RECORDS OF THE COUNTY IN WHICH THE CORNER IS LOCATED.
- D. THE REFERENCE TIES REFERRED TO IN AN EXISTING PUBLIC RECORD NO LONGER EXIST.

CORNERS TO BE INDEXED

CORNER	SECTION	TOWNSHIP	RANGE
N 1/4 CORNER	24	85N	4W
S 1/4 CORNER	13	85N	4W

JONES COUNTY ENGINEER'S OFFICE



19501 HWY. 64, ANAMOSA, IOWA 52205  
 (319) 462-3785

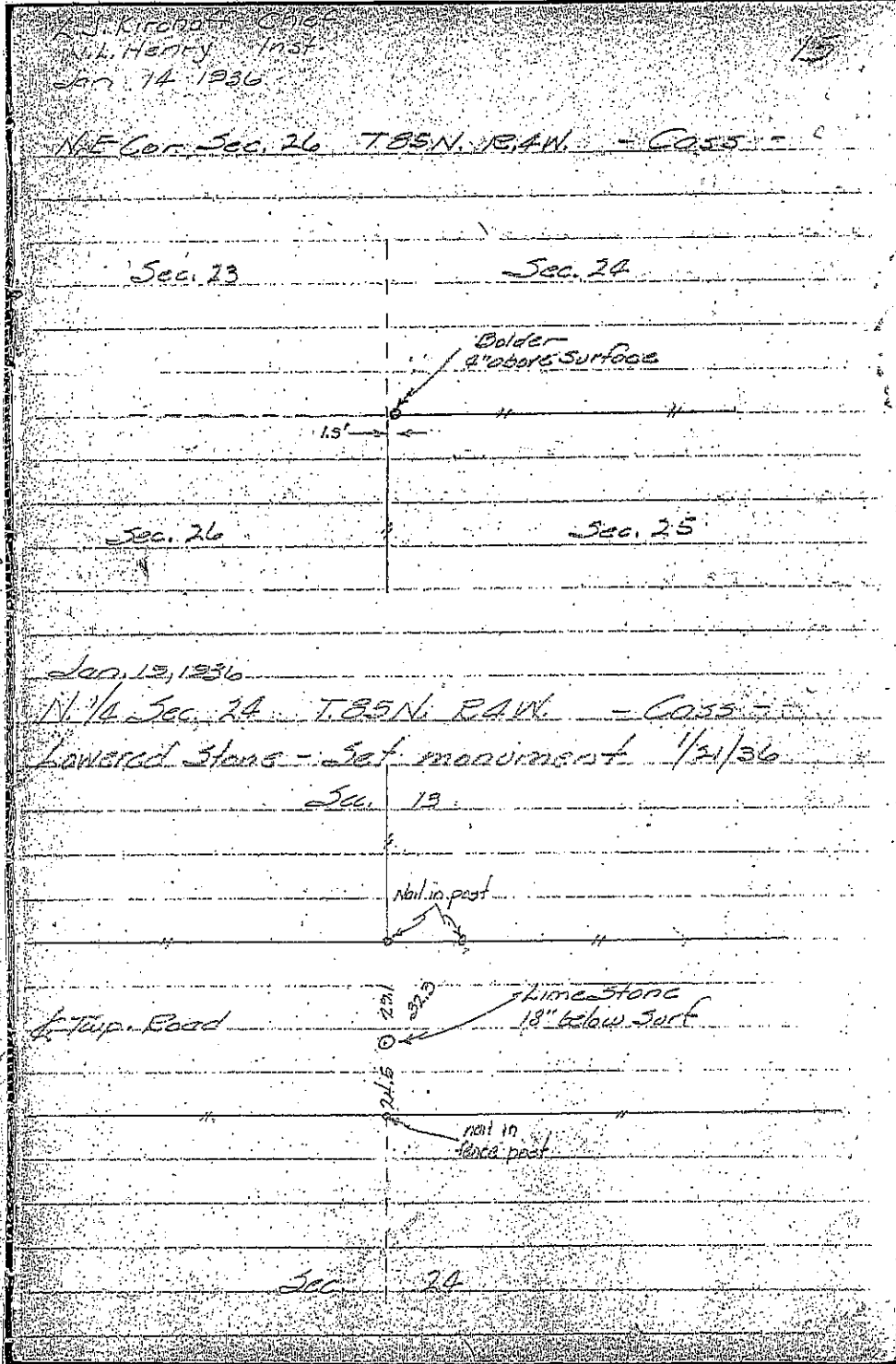
# UNITED STATES PUBLIC LAND SURVEY CORNER CERTIFICATE

LAND SURVEY MONUMENTS SITUATED IN SECTION 24, TOWNSHIP 85 NORTH,  
 RANGE 4 WEST OF THE 5TH PRINCIPAL MERIDIAN, JONES COUNTY, IOWA.

CORNER SECTION TOWNSHIP RANGE  
 N 1/4 CORNER 24 T85N R4W



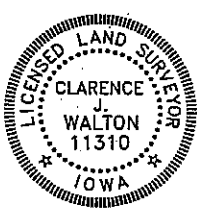
NO SCALE



PAGE 2 of 2

PREVIOUSLY REFERENCED: "CASS TOWNSHIP CORNER TIES JONES COUNTY IOWA" FIELD BOOK (PAGE 15)  
 MONUMENT DESCRIPTION AND HOW ESTABLISHED THE AFOREMENTIONED 3" X 5" NOTECARD ON PAGE 1 OF 2 WAS DRAWN FROM THE FILED NOTES OF L. J. KIRCHOFF DATED JAN. 15, 1936 IN THE ABOVE STATED REFERENCE WHICH CAN BE FOUND IN THE VAULT OF THE JONES COUNTY ENGINEER'S OFFICE. THE FIELD BOOK IS A GREENISH GREY CANVAS CLAD FIELD BOOK LABELLED AS ABOVE. THIS IS A PHOTO COPY OF THE FIELD NOTES. THE ORIGINAL NOTES ARE VERY FADED AND THIS WAS THE MAXIMUM DARKNESS SETTING ON THE COPIER. NONE OF THE TIES SURVIVE AND THE ROAD HAS (OBVIOUSLY) CHANGED AT LEAST IN ELEVATION AND ALSO APPARENTLY IN ALIGNMENT. MOST IMPORTANTLY KIRCHOFF STATES THEY LOWERED A LIMESTONE (WHICH WAS AT THAT TIME 18" BELOW THE ROAD SURFACE) AND SET A MONUMENT ON JANUARY 1, 1936.

FIELD BOOK MISC. 2012, PAGE 159. DATE OF SURVEY: 6/6/12



I hereby certify that this land surveying document and the related survey work was performed by me or under my direct personal supervision and that I am a duly registered Land Surveyor under the laws of the State of Iowa.  
 Signed: *Clarence J. Walton* 6/7/12  
 Clarence J. Walton, L.S.  
 My Registration Renewal Date is December 31, 2013  
 Iowa License Number 11310  
 Pages or sheets covered by this seal: 2 of 2.

- A. THERE IS NO CERTIFICATE FOR THE CORNER ON FILE WITH THE RECORDER OF THE COUNTY IN WHICH THE CORNER IS LOCATED.
- B. THE CORNER MONUMENT HAS BEEN REPLACED OR MODIFIED.
- C. THE SURVEYOR IN RESPONSIBLE CHARGE OF THE LAND SURVEYING ACCEPTS A CORNER POSITION THAT DIFFERS FROM THAT SHOWN IN THE PUBLIC RECORDS OF THE COUNTY IN WHICH THE CORNER IS LOCATED.
- D. THE REFERENCE TIES REFERRED TO IN AN EXISTING PUBLIC RECORD NO LONGER EXIST.

CORNERS TO BE INDEXED			
CORNER	SECTION	TOWNSHIP	RANGE
N 1/4 CORNER	24	85N	4W
S 1/4 CORNER	13	85N	4W

## JONES COUNTY ENGINEER'S OFFICE



19501 HWY. 64, ANAMOSA, IOWA 52205  
 (319) 462-3785

# THIS IS NOT A CERTIFICATION

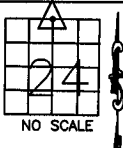
JONES COUNTY ENGINEER'S OFFICE, 19501 HWY. 64, ANAMOSA, IOWA, 52205 (319)462-3785

## UNITED STATES PUBLIC LAND SURVEY CORNER CERTIFICATE

LAND SURVEY MONUMENTS SITUATED IN SECTION 24, TOWNSHIP 85  
NORTH, RANGE 4 WEST OF THE 5TH P.M., JONES COUNTY, IOWA

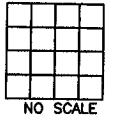
**CORNERS TO BE INDEXED**

CORNER SECTION TOWNSHIP RANGE  
N-QUARTER 24 85N 4W



**CORNERS TO BE INDEXED**

CORNER SECTION TOWNSHIP RANGE

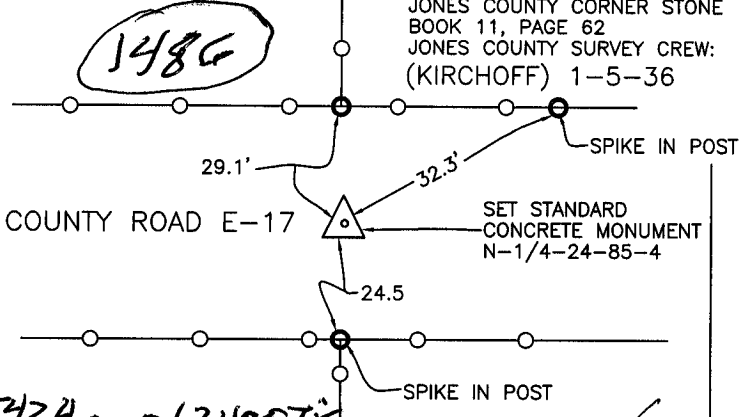


OFFICE FILE NO.

OFFICE FILE NO.

85424c\_062304.tif

REF:  
JONES COUNTY CORNER STONE  
BOOK 11, PAGE 62  
JONES COUNTY SURVEY CREW:  
(KIRCHOFF) 1-5-36



COUNTY ROAD E-17 SET STANDARD CONCRETE MONUMENT N-1/4-24-85-4

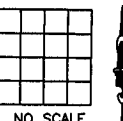
OFFICE FILE NO.

PREVIOUSLY RECORDED IN BOOK \_\_\_\_\_, PAGE \_\_\_\_\_  
MONUMENT DESCRIPTION AND HOW ESTABLISHED \_\_\_\_\_

PREVIOUSLY RECORDED IN BOOK \_\_\_\_\_, PAGE \_\_\_\_\_  
MONUMENT DESCRIPTION AND HOW ESTABLISHED \_\_\_\_\_  
LIMESTONE 18" DOWN, LOWERED, SET STANDARD CONCRETE MONUMENT  
ABOVE WITH TOP DOWN 12" BELOW ROAD SURFACE. NORTH QUARTER  
CORNER SECTION 24, TOWNSHIP 85 NORTH, RANGE 4 WEST OF THE  
5TH PRINCIPAL MERIDIAN, JONES COUNTY, IOWA.

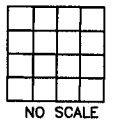
**CORNERS TO BE INDEXED**

CORNER SECTION TOWNSHIP RANGE



**CORNERS TO BE INDEXED**

CORNER SECTION TOWNSHIP RANGE



OFFICE FILE NO.

OFFICE FILE NO.

PREVIOUSLY RECORDED IN BOOK \_\_\_\_\_, PAGE \_\_\_\_\_  
MONUMENT DESCRIPTION AND HOW ESTABLISHED \_\_\_\_\_

PREVIOUSLY RECORDED IN BOOK \_\_\_\_\_, PAGE \_\_\_\_\_  
MONUMENT DESCRIPTION AND HOW ESTABLISHED \_\_\_\_\_

~~I hereby declare that this plat, survey or report was made by me or under my direct personal supervision and that I am a duly registered Land Surveyor under the laws of the State of Iowa.~~

Signed: \_\_\_\_\_

SEAL

JONES COUNTY  
ENGINEER'S OFFICE

19501 HWY. 64,  
ANAMOSA, IOWA,  
52205 (319)462-3785