

FEEBOOK: 2007 3600

REC FEES: \$7.00 11/6/2007 10:03 AM

PAGES: 1

Marie Krutzfield, Recorder
Jones County, Iowa

PREPARED BY

STEPHEN MICHAEL BRAIN, BRAIN ENGINEERING, INC., 1540 MIDLAND COURT NE, CEDAR RAPIDS, IOWA PH. (319) 294-9424

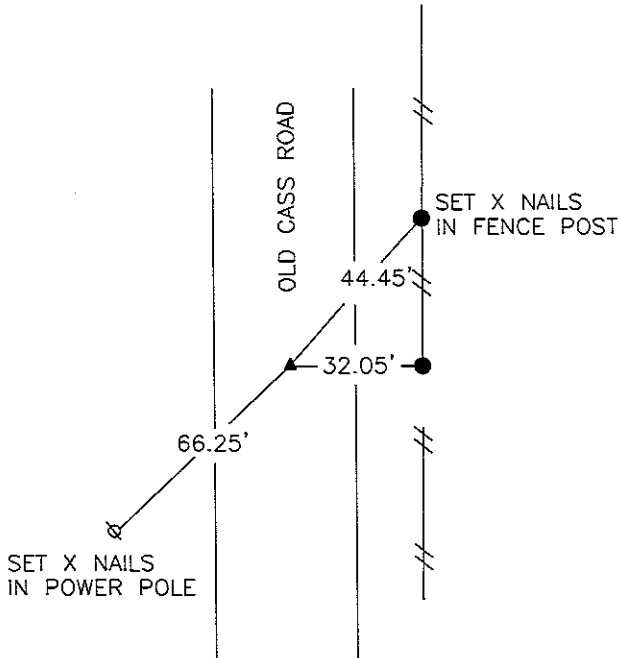
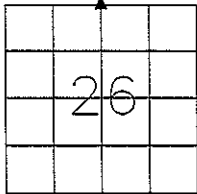
UNITED STATES PUBLIC LAND SURVEY CORNER CERTIFICATE

LAND SURVEY MONUMENTS SITUATED IN SECTION 26, TOWNSHIP 85 NORTH
RANGE 4 WEST OF THE 5TH P.M., JONES COUNTY, IOWA.

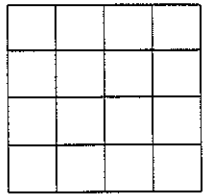
NO SCALE



N 1/4 CORNER

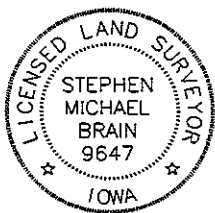


NO SCALE



PREVIOUSLY RECORDED IN DOCUMENT #2003 1071
 MONUMENT DESCRIPTION AND HOW ESTABLISHED _____
 FOUND 1/2" REBAR W/RED PLASTIC CAP #11954
 3" BELOW SURFACE.

PREVIOUSLY RECORDED IN BOOK _____ PAGE _____
 MONUMENT DESCRIPTION AND HOW ESTABLISHED _____



I hereby certify that this land surveying document and the related survey work was performed by me or under my direct personal supervision and that I am a duly licensed Land Surveyor under the laws of the State of Iowa.
 Signed _____ Date 11/5/07

Stephen Michael Brain, L.S.
 My License Renewal Date is December 31, 2008
 License Number 9647
 Pages or sheets covered by this seal: 1/1

- A. THERE IS NO CERTIFICATE FOR THE CORNER ON FILE WITH THE RECORDER OF THE COUNTY IN WHICH THE CORNER IS LOCATED
- B. THE SURVEYOR IN RESPONSIBLE CHARGE OF THE LAND SURVEYING ACCEPTS A CORNER POSITION WHICH DIFFERS FROM THAT SHOWN IN THE PUBLIC RECORDS OF THE COUNTY IN WHICH THE CORNER IS LOCATED.
- C. THE CORNER MONUMENT IS REPLACED OR MODIFIED IN ANY WAY.
- D. THE REFERENCE TIES REFERRED TO IN AN EXISTING PUBLIC RECORD ARE NOT CORRECT.

CORNERS TO BE INDEXED

CORNER	SECTION	TOWNSHIP	RANGE
N 1/4	26	T85N	R4 W

BRAIN ENGINEERING, INC.

1540 MIDLAND COURT NE
 CEDAR RAPIDS, IOWA 52402 382207.10
 (319) 294-9424

Handwritten initials and date: RCH 11/5/07

2003 1071
FILED
RECORDERS OFFICE
JONES COUNTY IOWA

03 MAR 13 PM 1:15

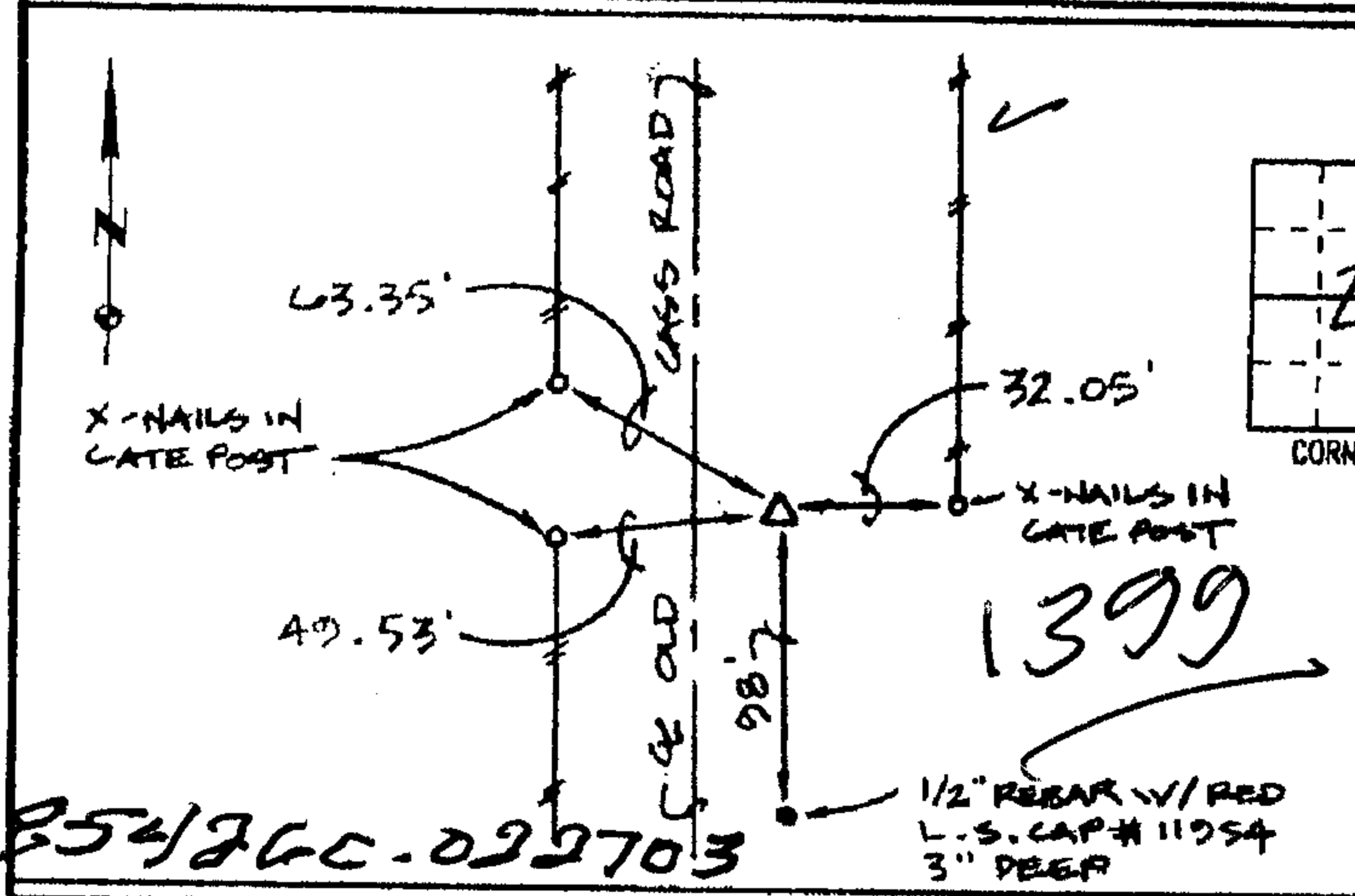
MARIE KRUTZFIELD
RECORDER 6.00 Ad

PREPARED BY HALL & HALL ENGINEERS, INC. 209 29TH STREET N.E. CEDAR RAPIDS, IOWA 52402 (319) 362-9548

LAND SURVEY MONUMENTS SITUATED IN SECTION 26, TOWNSHIP 85 NORTH,
RANGE 4 WEST, OF THE FIFTH PRINCIPAL MERIDIAN, JONES COUNTY IOWA.

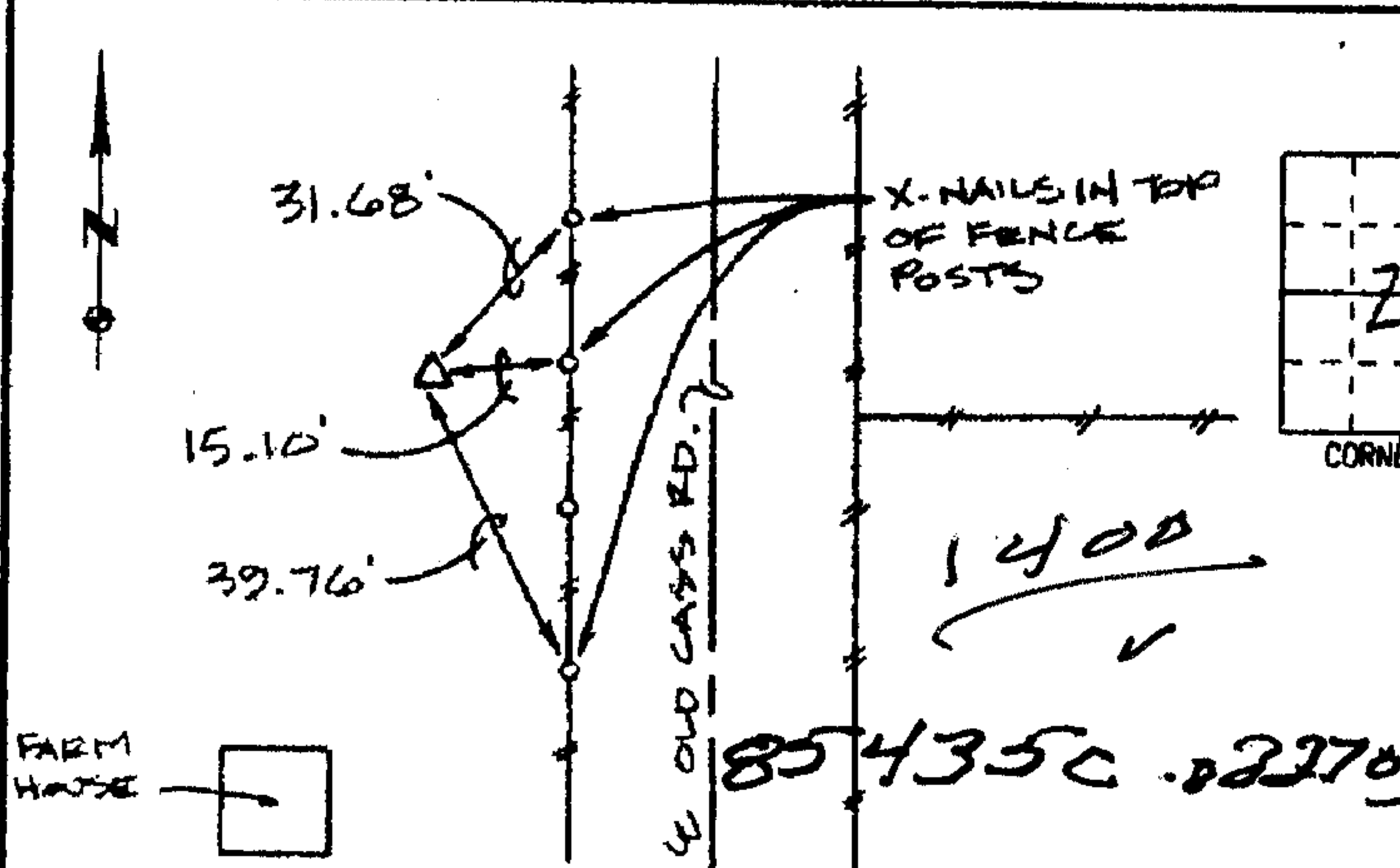
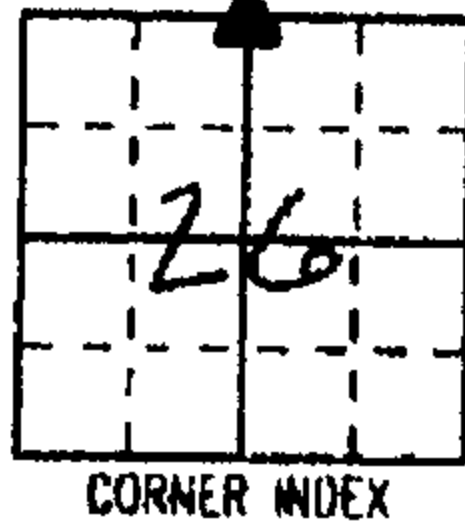
RECOVERY TIE DRAWING

MONUMENT DESCRIPTION AND REMARKS:



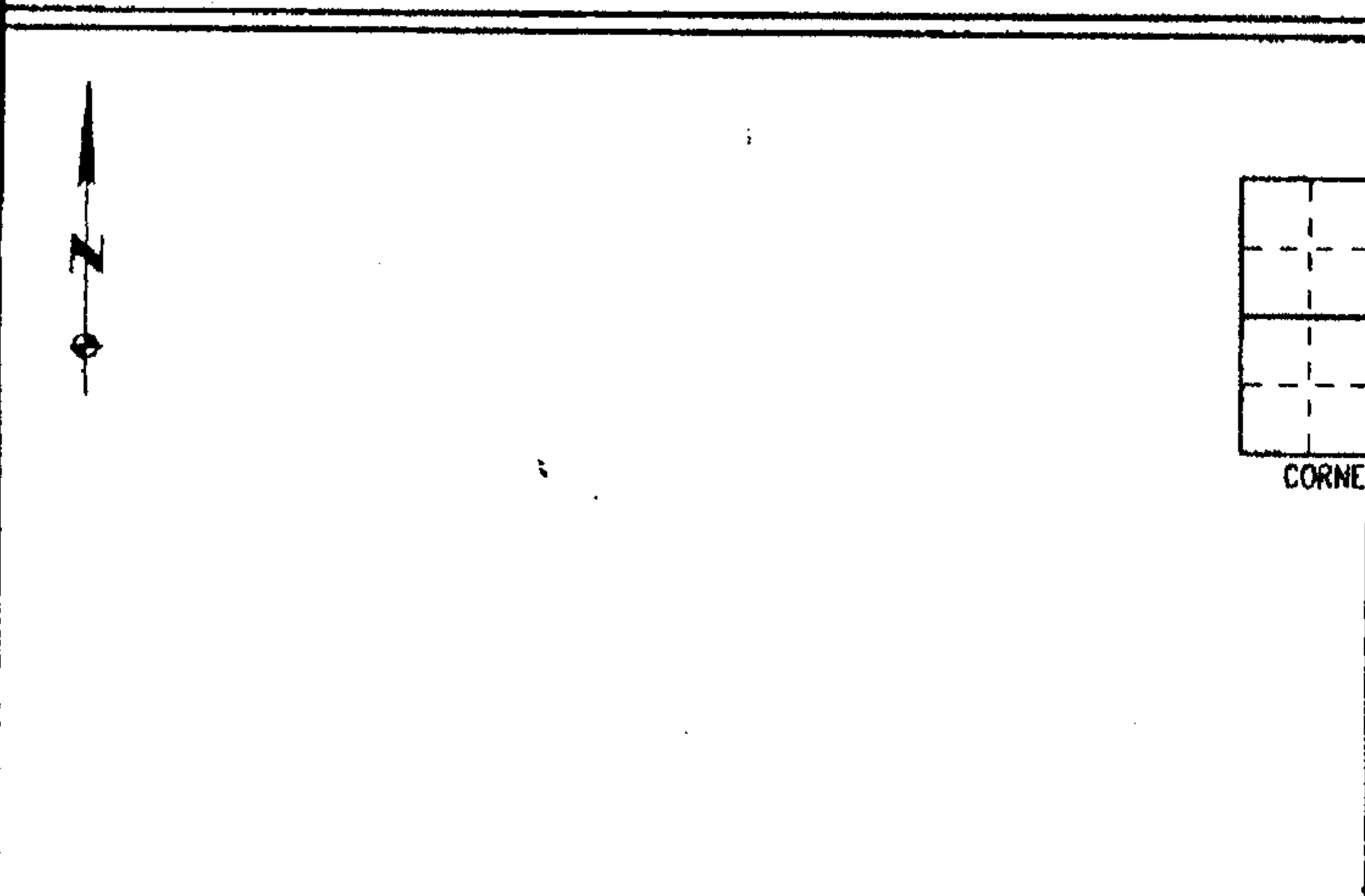
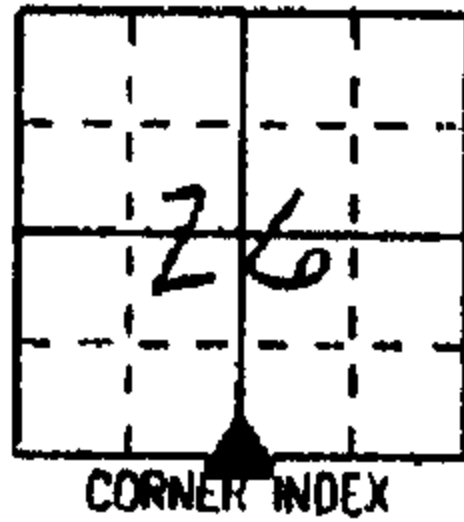
N 1/4 COR. 1/4 1/4, SEC. 26, T85N, R4W

REASON FOR PREPARING CERTIFICATE: B, C OR D
PREVIOUS BOOK _____, PAGE _____
SET 1/2" REBAR WITH RED L.S. CAP
11954, 3" DEEP



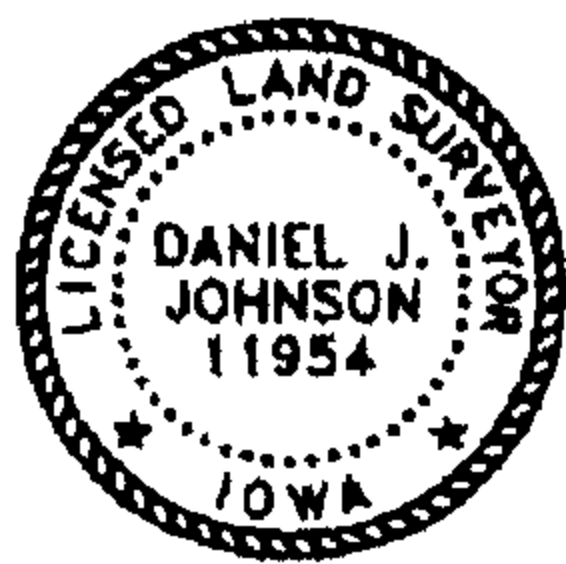
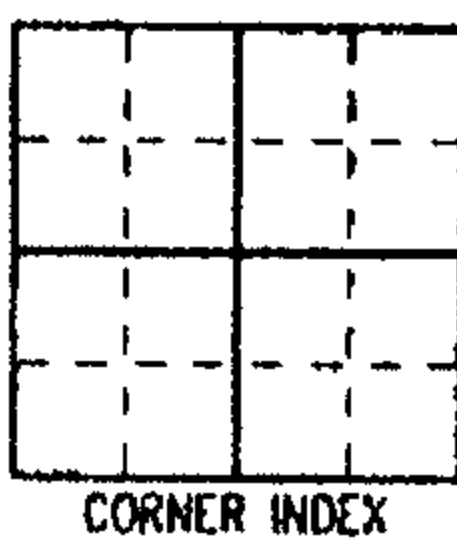
S 1/4 COR. 1/4 1/4, SEC. 26, T85N, R4W

REASON FOR PREPARING CERTIFICATE: B, C OR D
PREVIOUS BOOK _____, PAGE _____
SET 1/2" REBAR WITH RED L.S. CAP
11954, 18" DEEP



___ COR. 1/4 1/4, SEC. ___, T___N, R___W

REASON FOR PREPARING CERTIFICATE: A, B, C OR D
PREVIOUS BOOK _____, PAGE _____



I hereby certify that this land surveying document was prepared and the related survey work was performed by me or under my direct personal supervision and that I am a duly licensed Land Surveyor under the laws of the State of Iowa.

Signed: Daniel J. Johnson Date: 2-27-03
Daniel J. Johnson, L.S. 11954
My license renewal date is December 31, 2004
Pages or sheets covered by this seal: 1

REASON FOR PREPARING CERTIFICATE:

- A) THERE IS NO CERTIFICATE FOR THE CORNER ON FILE WITH THE RECORDER OF THE COUNTY IN WHICH THE CORNER IS LOCATED.
- B) CORNER POSITION DIFFERS FROM THAT SHOWN IN THE PUBLIC RECORDS OF THE COUNTY IN WHICH THE CORNER IS LOCATED.
- C) THE CORNER MONUMENT HAS BEEN REPLACED OR MODIFIED.
- D) THE REFERENCE TIES REFERRED TO IN AN EXISTING PUBLIC RECORD ARE INCORRECT OR MISSING.

Sheet Title: U.S. PUBLIC LAND SURVEY CORNER CERTIFICATE

Project Title: RANDY TOENJES



HALL AND HALL ENGINEERS, INC.
209 29TH STREET N.E.
CEDAR RAPIDS, IOWA 52402
(319) 362-9548

Drawn by: DLK	Checked by: DJJ	Approved by: DJJ	Field Book No: 0737	Scale: NONE	Date: 2/11/03	Project No: 5652
------------------	--------------------	---------------------	------------------------	----------------	------------------	---------------------

I