

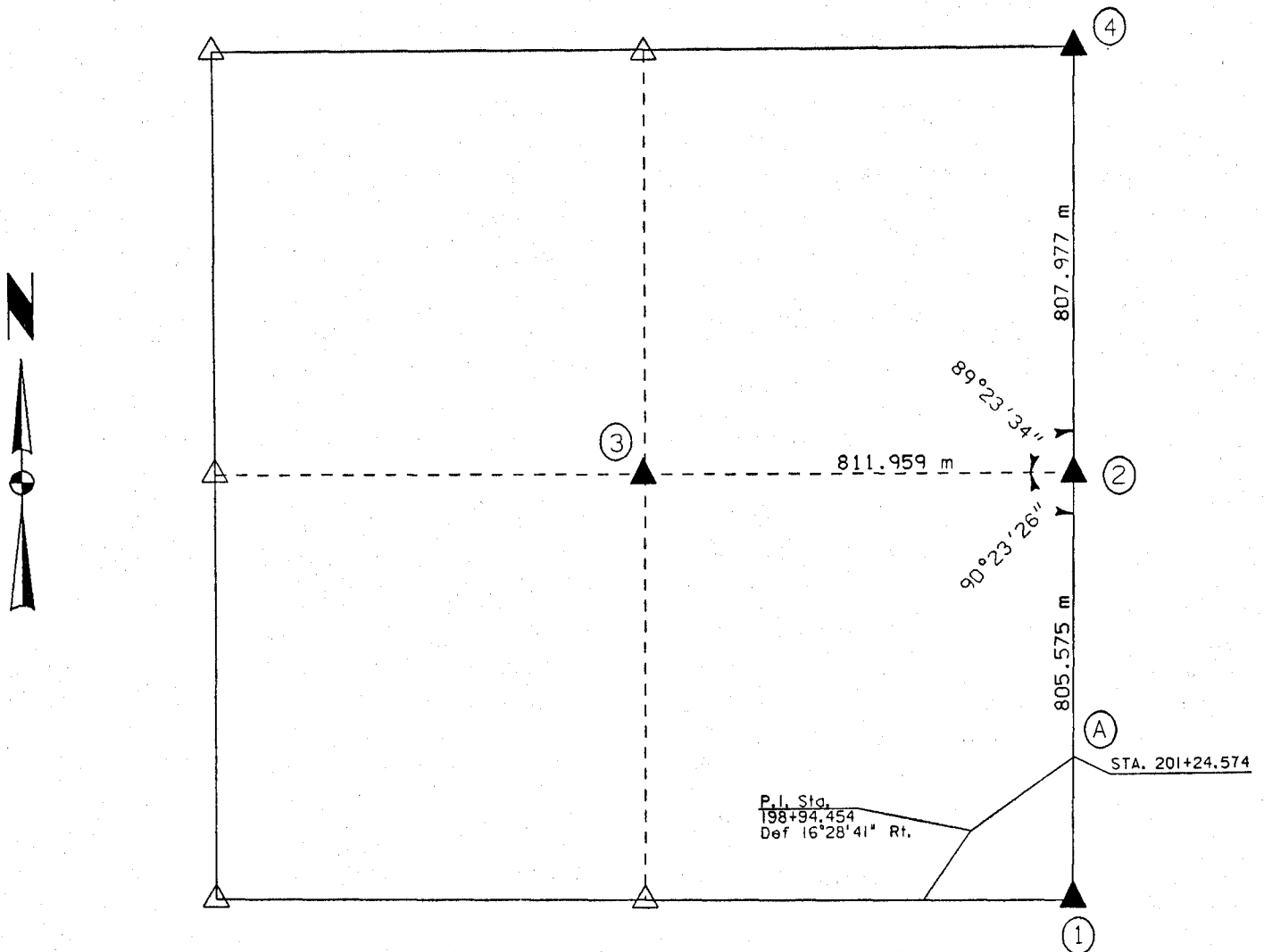
EARTH TECH 501 SYCAMORE STREET WATERLOO, IOWA 50703 1-319-232-6531

UNITED STATES PUBLIC SECTION CORNER CERTIFICATION
AND LAND CORNER SURVEY
SECTION 25 T-85N R-4W

MADE FOR
IOWA DEPARTMENT OF TRANSPORTATION FOR THE PURPOSE OF
RIGHT OF WAY DESCRIPTIONS ON PRIMARY ROAD No. U.S. 151

MADE BY
MICHAEL R. FAGLE R.L.S. No. 8505
JONES COUNTY, IOWA NHS-151-3(84)--19-57
APRIL 1998 THRU OCTOBER 1998

ALL DISTANCES WERE CAREFULLY MEASURED AND MAY NOT AGREE WITH ROAD SURVEY STATIONING



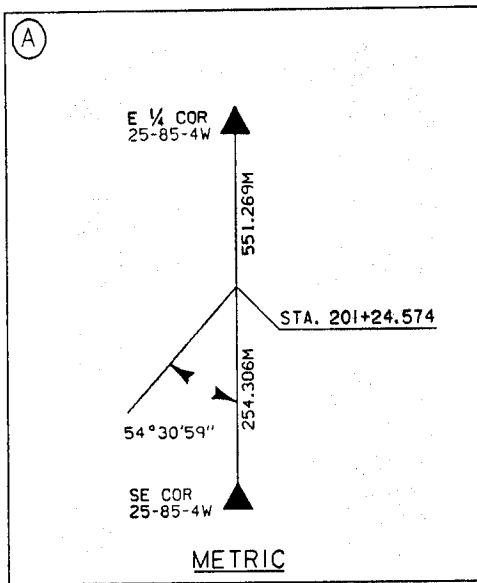
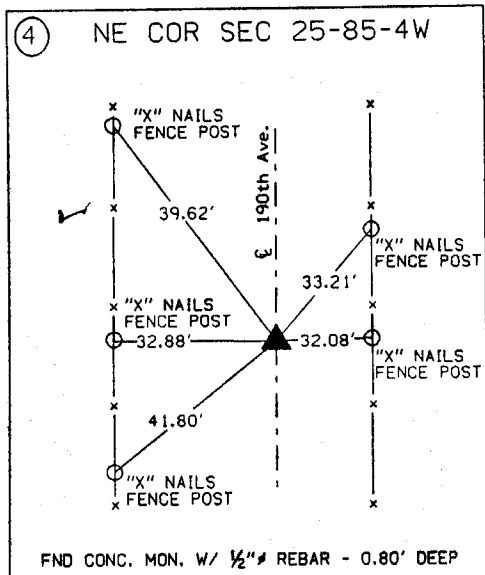
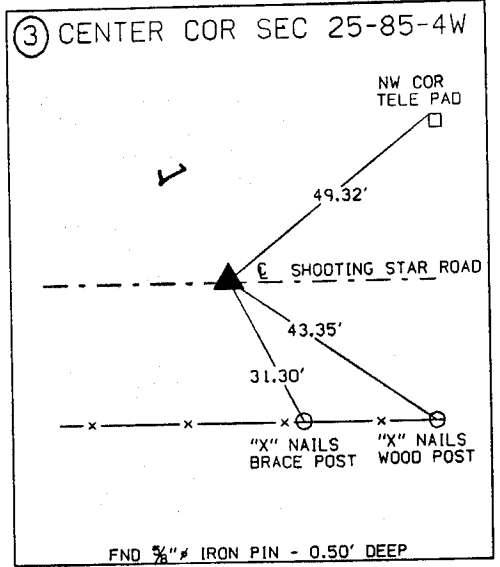
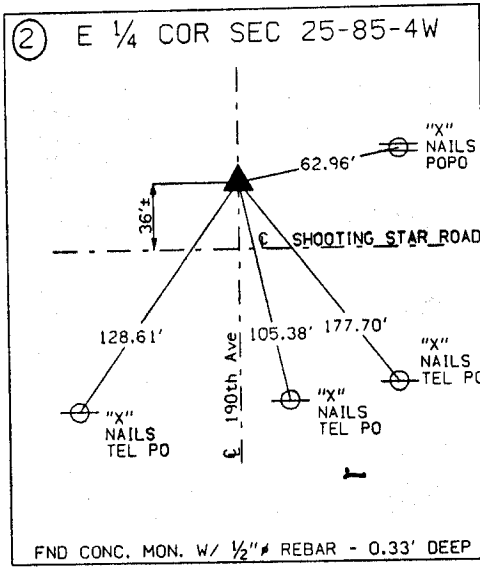
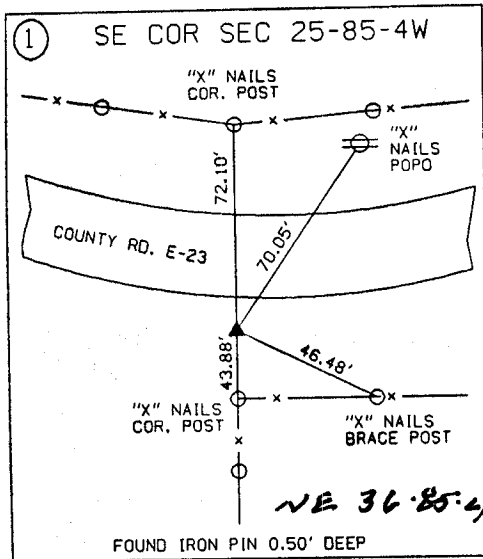
85423e-012199
85423o-012199
85423m-012199
85436e-012199

EARTH TECH

	<p>I hereby certify that this Land Surveying document was prepared by me or under my direct personal supervision and that I am a duly Licensed Land Surveyor under the laws of the State of Iowa.</p> <p><i>Michael R. Fagle</i> 1-21-99 MICHAEL R. FAGLE Date</p>
	<p>License number 8505 My license renewal date is December 31, 2000 Pages or sheets covered by this seal: <u>Two (2)</u></p>

METRIC

UNITED STATES PUBLIC SECTION CORNER CERTIFICATION
AND LAND CORNER SURVEY
SECTION 25 T-85N R-4W



ALL TIES ARE ENGLISH UNLESS OTHERWISE NOTED

THIS IS NOT A CERTIFICATION

JONES COUNTY ENGINEER'S OFFICE, 19501 HWY. 64, ANAMOSA, IOWA, 52205 (319)462-3785

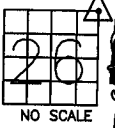
UNITED STATES PUBLIC LAND SURVEY CORNER CERTIFICATE

LAND SURVEY MONUMENTS SITUATED IN SECTION 26, TOWNSHIP 85
NORTH, RANGE 4 WEST OF THE 5TH P.M., JONES COUNTY, IOWA

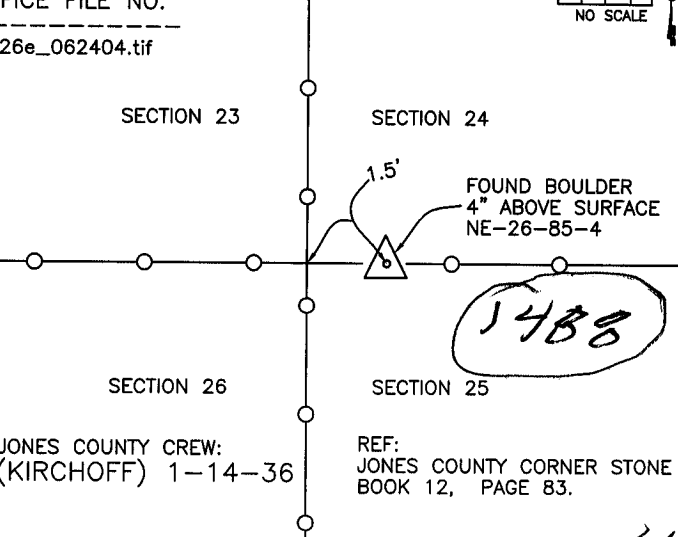
CORNERS TO BE INDEXED

CORNER NORTHEAST	SECTION 26	TOWNSHIP 85N	RANGE 4W
---------------------	---------------	-----------------	-------------

OFFICE FILE NO. _____
85426e_062404.tif



NO SCALE



SECTION 23 SECTION 24

SECTION 26 SECTION 25

JONES COUNTY CREW:
(KIRCHOFF) 1-14-36

REF:
JONES COUNTY CORNER STONE
BOOK 12, PAGE 83.

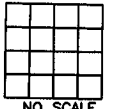
PREVIOUSLY RECORDED IN BOOK _____, PAGE _____
MONUMENT DESCRIPTION AND HOW ESTABLISHED _____

85426e_062404.tif

CORNERS TO BE INDEXED

CORNER	SECTION	TOWNSHIP	RANGE
--------	---------	----------	-------

OFFICE FILE NO. _____



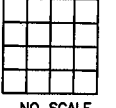
NO SCALE

PREVIOUSLY RECORDED IN BOOK _____, PAGE _____
MONUMENT DESCRIPTION AND HOW ESTABLISHED _____

CORNERS TO BE INDEXED

CORNER	SECTION	TOWNSHIP	RANGE
--------	---------	----------	-------

OFFICE FILE NO. _____



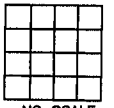
NO SCALE

PREVIOUSLY RECORDED IN BOOK _____, PAGE _____
MONUMENT DESCRIPTION AND HOW ESTABLISHED _____

CORNERS TO BE INDEXED

CORNER	SECTION	TOWNSHIP	RANGE
--------	---------	----------	-------

OFFICE FILE NO. _____



NO SCALE

PREVIOUSLY RECORDED IN BOOK _____, PAGE _____
MONUMENT DESCRIPTION AND HOW ESTABLISHED _____

~~I hereby declare that this plat, survey or report was made by me or under my direct personal supervision and that I am a duly registered Land Surveyor under the laws of the State of Iowa.~~

Signed: _____

SEAL

JONES COUNTY
ENGINEER'S OFFICE

19501 HWY. 64,
ANAMOSA, IOWA,
52205 (319)462-3785