

1999 3218

FILED
RECORDERS OFFICE
JONES COUNTY IOWA

99 SEP -8 AM 10:58

MARIE KRUTZFIELD
RECORDER 6.00 Pd

PREPARED BY HALL & HALL ENGINEERS, INC. 209 29TH STREET N.E. CEDAR RAPIDS, IOWA 52402 (319) 362-9548

SECTION CORNER CERTIFICATE
OF

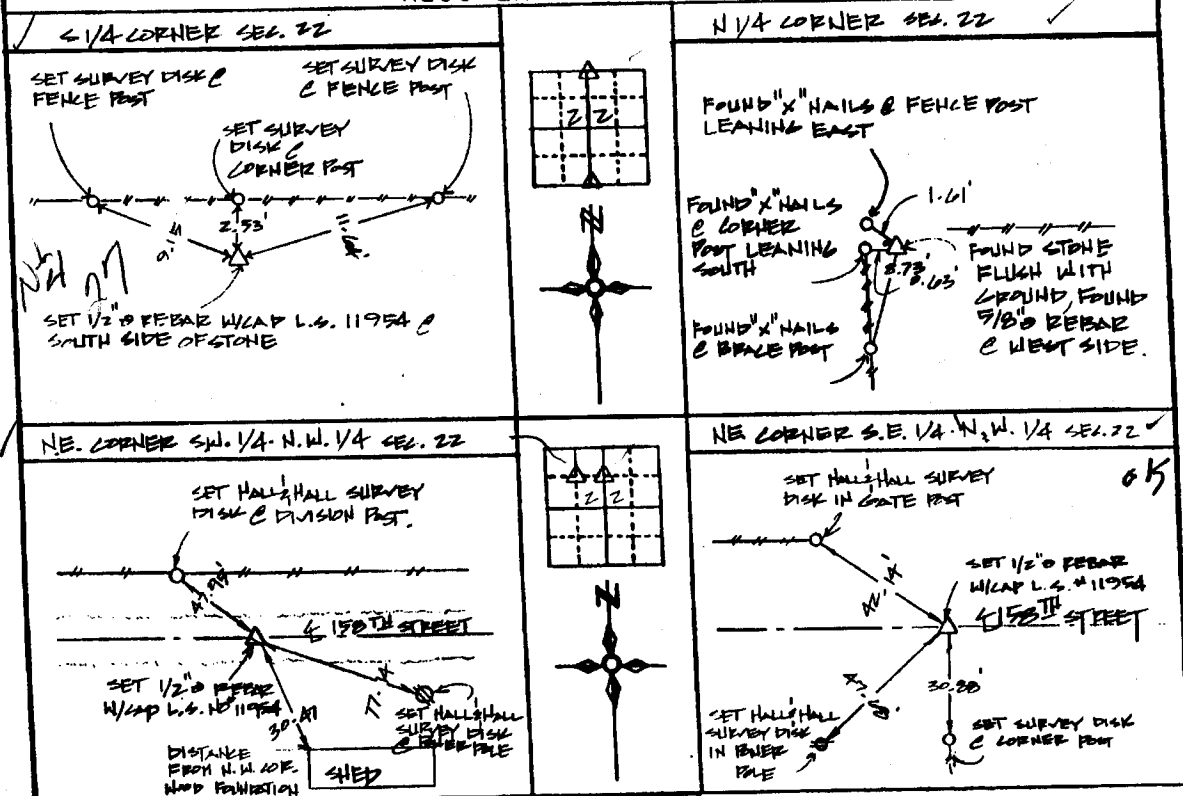
LAND SURVEY MONUMENTS SITUATED IN SECTION 22, TOWNSHIP 85 NORTH,
RANGE 4 WEST, OF THE FIFTH PRINCIPAL MERIDIAN, JONES COUNTY, IOWA.

PREVIOUSLY RECORDED IN BOOK _____ AT PAGE _____

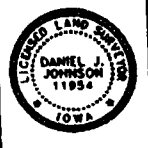
MONUMENT DESCRIPTION AND REMARKS:

S/4 CORNER OF SEC. 22, SET 1/2" PEBBLE W/ CAP L.S. NO 11954
N/4 CORNER OF SEC. 22, FOUND STONE FLUSH WITH GROUND, FOUND 5/8" PEBBLE ON WEST SIDE
N.E. CORNER S.W. 1/4 - N.W. 1/4 OF SEC. 22, SET 1/2" PEBBLE W/ CAP L.S. NO 11954
N.E. CORNER S.E. 1/4 - N.W. 1/4 OF SEC. 22, SET 1/2" PEBBLE W/ CAP L.S. NO 11954

RECOVERY TIE DRAWING



85422c-090899
85427c-090899
85422g-090899
85422h-090899



I hereby certify that this land surveying document was prepared and the related survey work was performed by me or under my direct personal supervision and that I am a duly Licensed Land Surveyor under the laws of the State of Iowa.
Date: 9-8-99
Signed: Daniel J. Johnson
Daniel J. Johnson, L.S. 11954
My license expires on December 31, 2000
Pages or sheets covered by this cost: _____
(Entire submission unless specified here)

- REASON FOR PREPARING CERTIFICATE
- A) THERE IS NO CERTIFICATE FOR THE CORNER ON FILE WITH THE RECORDER OF THE COUNTY IN WHICH THE CORNER IS LOCATED
 - B) CORNER POSITION DIFFERS FROM THAT SHOWN IN THE PUBLIC RECORDS OF THE COUNTY IN WHICH THE CORNER IS LOCATED
 - C) THE CORNER MONUMENT HAS BEEN REPLACED OR MODIFIED
 - D) THE REFERENCE TIES REFERRED TO IN AN EXISTING PUBLIC RECORD ARE INCORRECT

GOVERNMENT CORNER PROPERTY CORNER (OLD) 1/2" 130° W/ L.S. CAP SET EXISTING FENCE LINE PROPERTY LINE	SHEET NO. <u>US PUBLIC LAND SURVEY RECORD</u>		HALL AND HALL ENGINEERS, INC. 209 29TH STREET N.E. CEDAR RAPIDS, IOWA 52402 (319) 362-9548
	PROJECT FILE: <u>JONES COUNTY ACQUISITION PLAT</u>	SCALE: <u>N.T.S.</u>	
SHEET NO. <u>T.M.R</u>	DATE: <u>7-2-98</u>	COUNTY: <u>JONES</u>	SHEET NO. <u>4625</u>

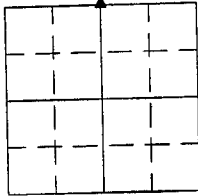
UNITED STATES PUBLIC LAND SURVEY CORNER CERTIFICATE

LAND SURVEY MONUMENTS SITUATED IN SECTION 22, TOWNSHIP 85 NORTH
RANGE 4 WEST OF THE 5TH P.M., JONES COUNTY, IOWA.

NO SCALE



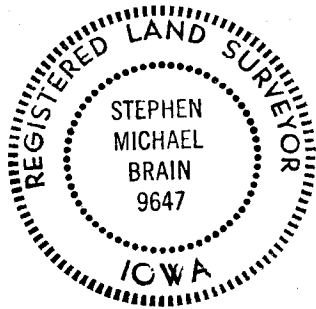
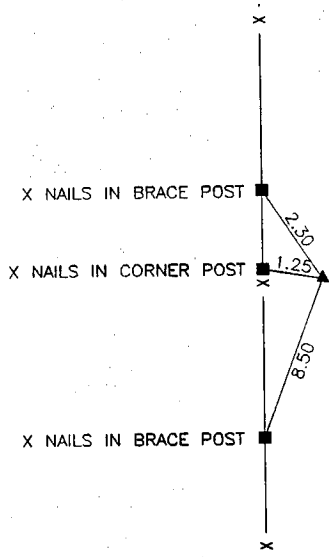
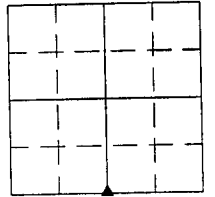
N 1/4 CORNER



NO SCALE

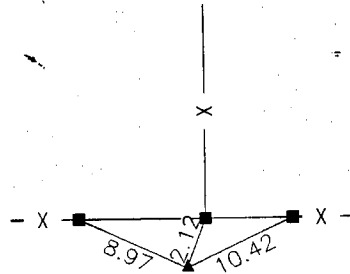


S 1/4 CORNER



12-8-94 M.S.

PREVIOUSLY RECORDED IN BOOK _____ PAGE _____
MONUMENT DESCRIPTION AND HOW ESTABLISHED _____
FOUND STONE _____
NO MONUMENT ON FILE _____



N 1/4 SEC. 27 12-8-94 M.S.

PREVIOUSLY RECORDED IN BOOK _____ PAGE _____
MONUMENT DESCRIPTION AND HOW ESTABLISHED _____
FOUND STONE _____
NO MONUMENT ON FILE _____

I hereby declare that this plat, survey or report was made by me or under my direct personal supervision and that I am a duly registered Land Surveyor under the laws of the State of Iowa.

Signed *Stephen Michael Brain* Date *10/2/94*
Stephen Michael Brain, P.E. & L.S. Iowa Reg No. 9647

CORNERS TO BE INDEXED			
CORNER	SECTION	TOWNSHIP	RANGE
N 1/4	22	85	4
S 1/4	22	85	4

BRAIN ENGINEERING, INC.

700 11TH STREET, SUITE 201
MARION, IOWA 52302
(319) 373-1318

42422c-100394, 85427, 100394