

# COPY

**RECEIVED**  
 JUN 04 1996  
 JONES COUNTY ENGINEER

Wm. Burger Land Surveyors 510 3rd St. West Court Worthington, Iowa Phone 319 855 2028  
SLST 9-90

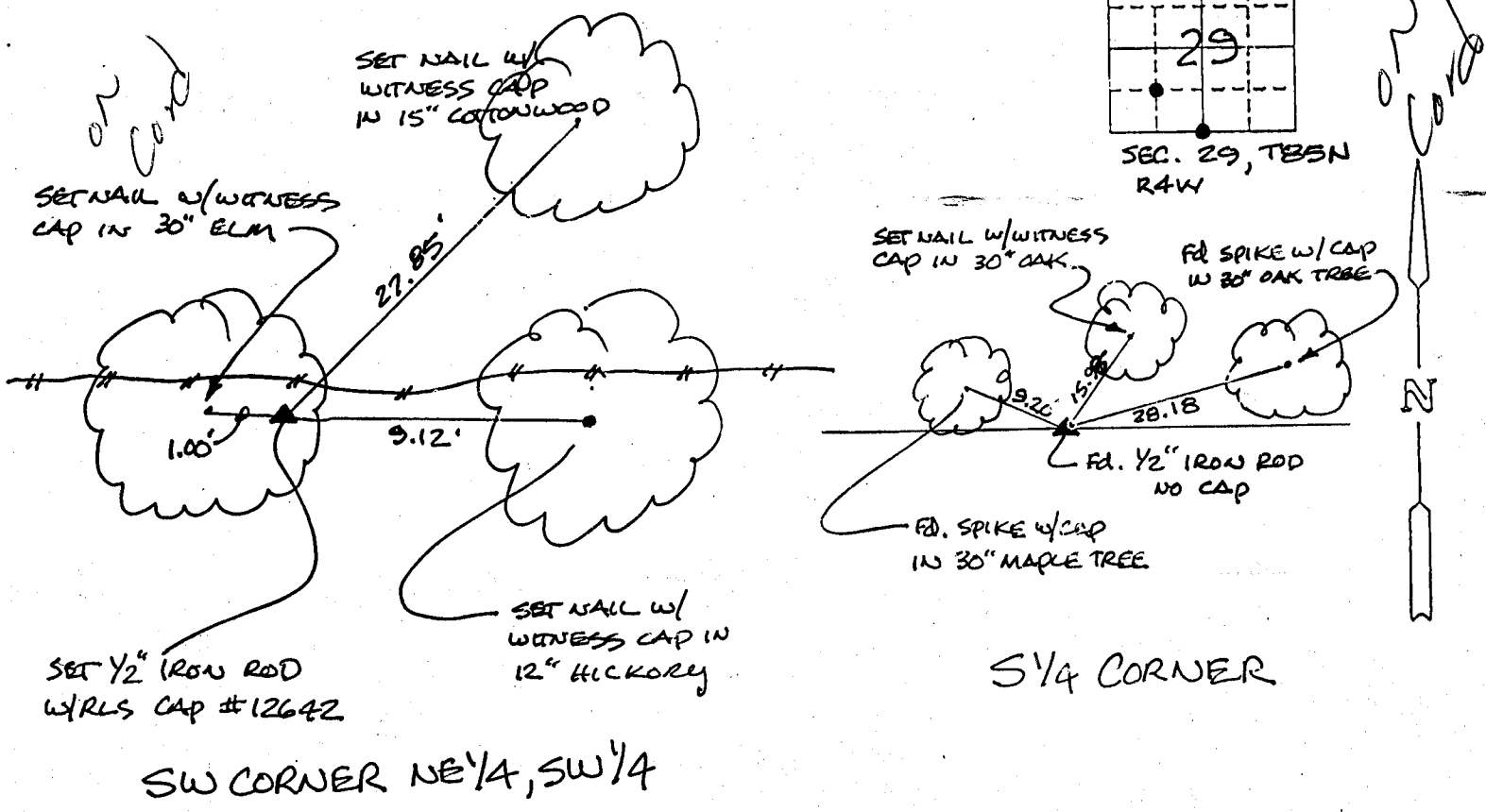
## UNITED STATES PUBLIC LAND SURVEY CORNER CERTIFICATE OF

Land Survey Monuments situated in Section 29, Township 85 NORTH, Range 4 WEST, of the Fifth Principal Meridian, JONES County, Iowa. Previously recorded in DOES NOT APPLY in County Recorder's Office.  
(book, page, document number, etc.)

(Show reason for preparing this certificate, the evidence and detailed procedures used in establishing the corner positions and monumentation found or placed.)  
 Monument Description and Remarks: NO CORNER CERTIFICATES WERE FOUND @ JONES COUNTY RECORDER'S OFFICE. S 1/4 CORNER - FOUND 1/2" IRON ROD (NO CAP)  
SW CORNER NE 1/4, SW 1/4 - SET 1/2" IRON ROD W/ RLS CAP # 12642.  
RUN STRAIGHT LINES TO OPPOSITE 1/4 1/4 CORNERS OF THE SW 1/4 AND SET SAID ROD AT POINT OF INTERSECTION.

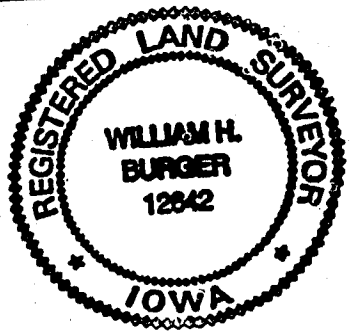
### PLAN - VIEW

(Show a minimum of three reference ties to durable physical objects, relevant monuments and physical conditions that will enable recovery of the corner.)



I hereby certify that the survey work was completed and this certificate was prepared by me or under my direct personal supervision and that I am a duly registered land surveyor under the laws of the state of Iowa.  
 Signature: William H. Burger  
 Name typed or printed:  
 Date: 6/1/96 Reg. No. 12642

Corners	List Corners to be Indexed		
	Section	Twp	Range
S 1/4	29	85 NORTH	4 WEST
SW - NE 1/4, SW 1/4	29	85 NORTH	4 WEST



SEAL