

# THIS IS NOT A CERTIFICATION

JONES COUNTY ENGINEER'S OFFICE, 19501 HWY. 64, ANAMOSA, IOWA, 52205 (319)462-3785

## UNITED STATES PUBLIC LAND SURVEY CORNER CERTIFICATE

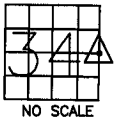
LAND SURVEY MONUMENTS SITUATED IN SECTION 34, TOWNSHIP 85  
NORTH, RANGE 4 WEST OF THE 5TH P.M., JONES COUNTY, IOWA

### CORNERS TO BE INDEXED

CORNER SECTION TOWNSHIP RANGE  
E-QUARTER 34 85N 4W

OFFICE FILE NO.

85434e\_062404.tif



1496

REF:  
JONES COUNTY SURVEY CREW:  
(KIRCHOFF) 1936

JONES COUNTY CORNER STONE BOOK  
12, PAGE 118.

DUG 4'X18'X20' HOLE ALONG FENCE LINE,  
10' EACH SIDE NORTH AND SOUTH OF  
CORNER POST. NO EVIDENCE OF MONUMENT.

PREVIOUSLY RECORDED IN BOOK \_\_\_\_\_, PAGE \_\_\_\_\_  
MONUMENT DESCRIPTION AND HOW ESTABLISHED \_\_\_\_\_

85434e\_012405.tif

### CORNERS TO BE INDEXED

CORNER SECTION TOWNSHIP RANGE  
NORTHEAST 34 85N 4W

OFFICE FILE NO.

85434e\_062404.tif



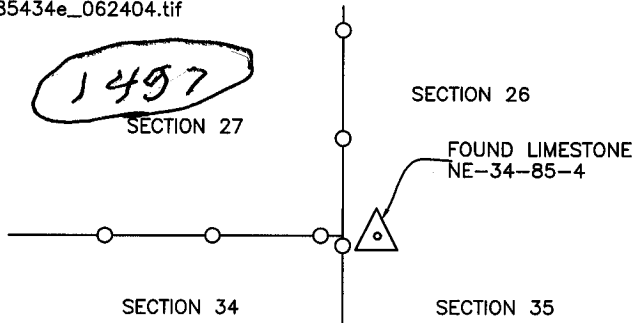
1497

REF:  
JONES COUNTY SURVEY CREW:  
(KIRCHOFF) 12-11-35

JONES COUNTY CORNER STONE BOOK  
12, PAGE 105..

PREVIOUSLY RECORDED IN BOOK \_\_\_\_\_, PAGE \_\_\_\_\_  
MONUMENT DESCRIPTION AND HOW ESTABLISHED FOUND  
LIMESTONE 12" BELOW SURFACE AT FENCE CORNER AS INDICATED.  
NORTHEAST CORNER SECTION 34, TOWNSHIP 85 NORTH, RANGE 4  
WEST OF THE 5TH PRINCIPAL MERIDIAN, JONES COUNTY, IOWA.

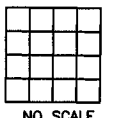
85434e\_012405.tif



### CORNERS TO BE INDEXED

CORNER SECTION TOWNSHIP RANGE

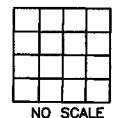
OFFICE FILE NO.



### CORNERS TO BE INDEXED

CORNER SECTION TOWNSHIP RANGE

OFFICE FILE NO.



PREVIOUSLY RECORDED IN BOOK \_\_\_\_\_, PAGE \_\_\_\_\_  
MONUMENT DESCRIPTION AND HOW ESTABLISHED \_\_\_\_\_

PREVIOUSLY RECORDED IN BOOK \_\_\_\_\_, PAGE \_\_\_\_\_  
MONUMENT DESCRIPTION AND HOW ESTABLISHED \_\_\_\_\_

~~I hereby declare that this plat, survey or report was made by me or under my direct personal supervision and that I am a duly registered Land Surveyor under the laws of the State of Iowa.~~

Signed: \_\_\_\_\_

SEAL

JONES COUNTY  
ENGINEER'S OFFICE

19501 HWY. 64,  
ANAMOSA, IOWA,  
52205 (319)462-3785