

44

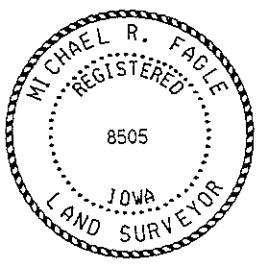
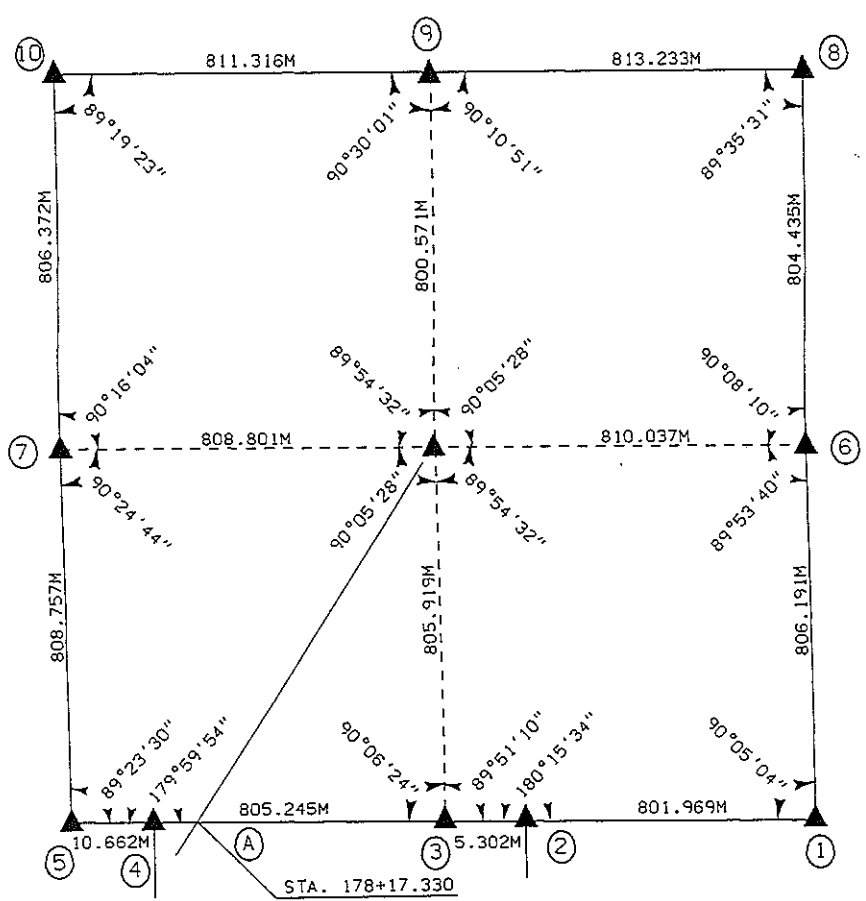
3229
FILED
RECORDERS OFFICE
JONES COUNTY IOWA
96 APR 22 AM 10:39
BOOK 398 PAGE 44
LINDA J. BENDIXEN
RECORDER *ll.ogel*

RUST ENVIRONMENT & INFRASTRUCTURE 501 SYCAMORE STREET WATERLOO, IOWA 50703 1-319-232-653

UNITED STATES PUBLIC SECTION CORNER CERTIFICATION
AND LAND CORNER SURVEY
SECTION 36 T-85N R-4W

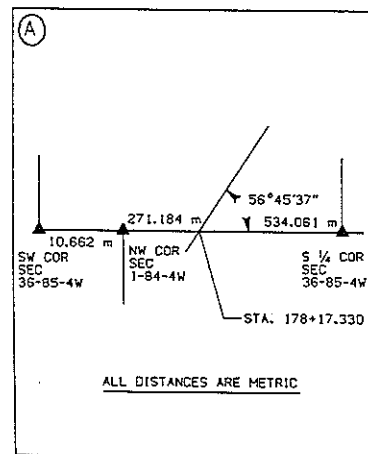
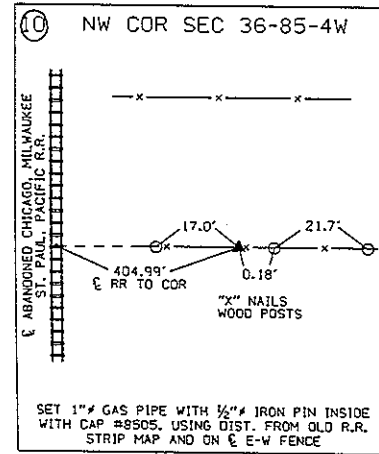
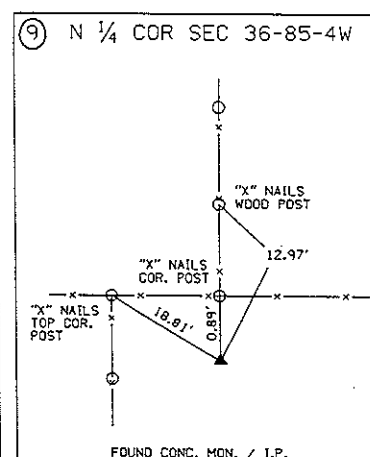
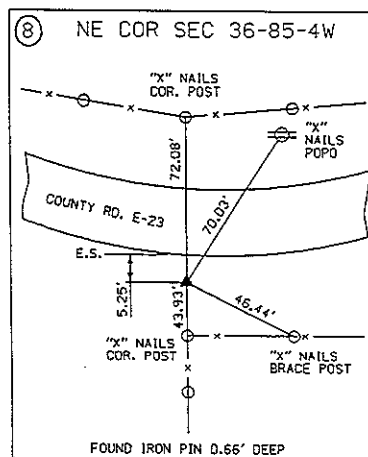
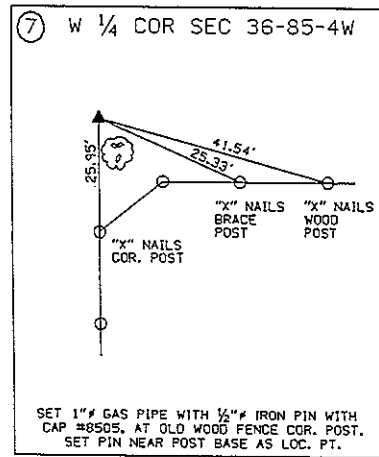
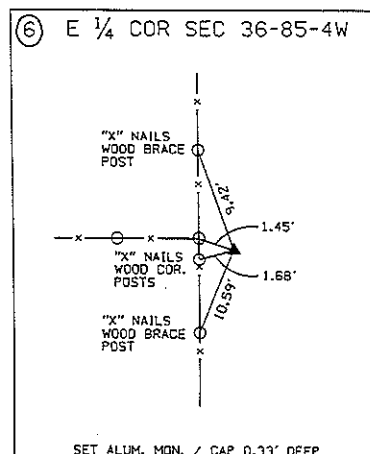
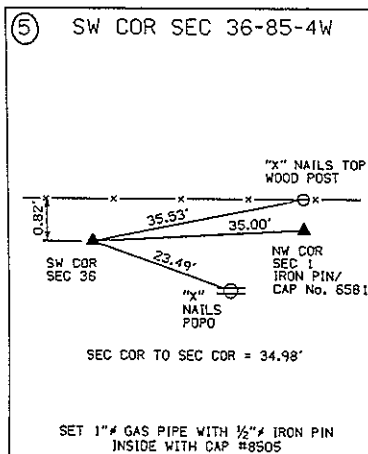
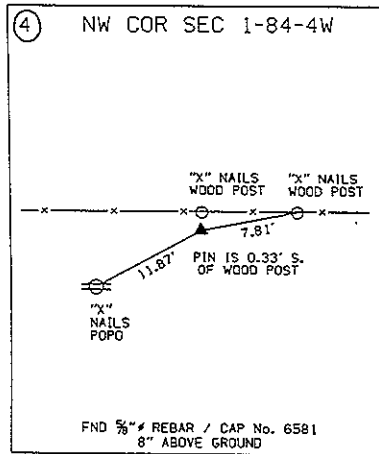
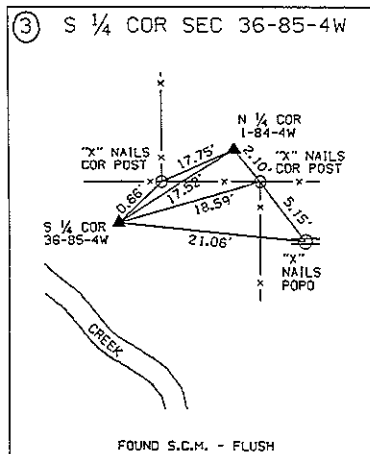
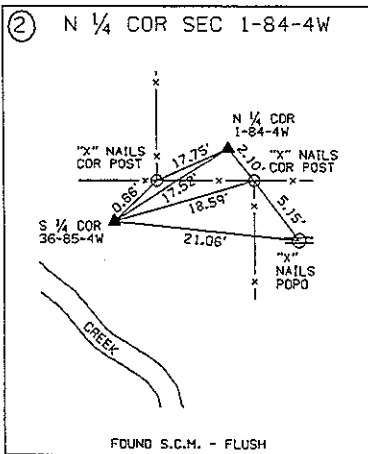
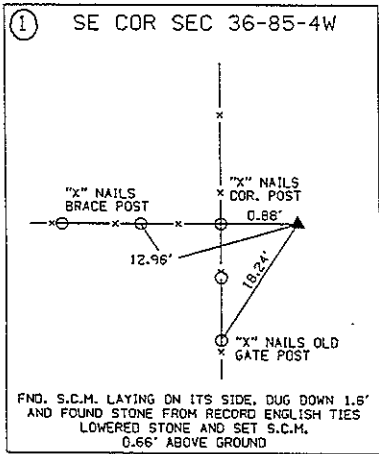
MADE FOR
IOWA DEPARTMENT OF TRANSPORTATION FOR THE PURPOSE OF
RIGHT OF WAY DESCRIPTIONS ON PRIMARY ROAD No. U.S. 151
MADE BY
MICHAEL R. FAGLE R.L.S. No. 8505
JONES COUNTY, IOWA NHS-151-3(84)--19-57
APRIL 1994 THRU AUGUST 1995

ALL DISTANCES WERE CAREFULLY MEASURED AND MAY NOT AGREE WITH ROAD SURVEY STATIONING



I hereby certify that this land surveying document was prepared by me or under my direct personal supervision and that I am a duly Registered Land Surveyor under the laws of the State of Iowa.
Signature: *Michael R Fagle*
Name: MICHAEL R. FAGLE, L.S.
Date 4-18-1996 Reg No. 8505
My registration renewal date is December 31, 1996

UNITED STATES PUBLIC SECTION CORNER CERTIFICATION
 AND LAND CORNER SURVEY
 SECTION 36 T-85N R-4W



ALL TIES ARE ENGLISH UNLESS OTHERWISE NOTED

THIS IS NOT A CERTIFICATION

JONES COUNTY ENGINEER'S OFFICE, 19501 HWY. 64, ANAMOSA, IOWA, 52205 (319)462-3785

UNITED STATES PUBLIC LAND SURVEY CORNER CERTIFICATE

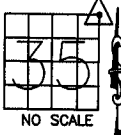
LAND SURVEY MONUMENTS SITUATED IN SECTION 35, TOWNSHIP 85
NORTH, RANGE 4 WEST OF THE 5TH P.M., JONES COUNTY, IOWA

CORNERS TO BE INDEXED

CORNER SECTION TOWNSHIP RANGE
NORTHEAST 35 85N 4W

OFFICE FILE NO.

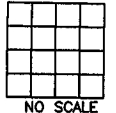
85435e_062404.tif



CORNERS TO BE INDEXED

CORNER SECTION TOWNSHIP RANGE

OFFICE FILE NO.



REF:
JONES COUNTY SURVEY CREW:
(KIRCHOFF) 1936
JONES COUNTY CORNER STONE BOOK 12, PAGE 103.

DUG HOLE 10' FROM CORNER POST NORTH AND SOUTH
ALONG FENCE LINE. NO EVIDENCE OF MONUMENT.

1498 ✓
✓

85435e_062404.tif

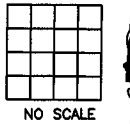
PREVIOUSLY RECORDED IN BOOK _____, PAGE _____
MONUMENT DESCRIPTION AND HOW ESTABLISHED _____

PREVIOUSLY RECORDED IN BOOK _____, PAGE _____
MONUMENT DESCRIPTION AND HOW ESTABLISHED _____

CORNERS TO BE INDEXED

CORNER SECTION TOWNSHIP RANGE

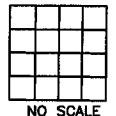
OFFICE FILE NO.



CORNERS TO BE INDEXED

CORNER SECTION TOWNSHIP RANGE

OFFICE FILE NO.



PREVIOUSLY RECORDED IN BOOK _____, PAGE _____
MONUMENT DESCRIPTION AND HOW ESTABLISHED _____

PREVIOUSLY RECORDED IN BOOK _____, PAGE _____
MONUMENT DESCRIPTION AND HOW ESTABLISHED _____

~~I hereby declare that this plat, survey or report
was made by me or under my direct personal
supervision and that I am a duly registered Land
Surveyor under the laws of the State of Iowa.~~

Signed:

SEAL

JONES COUNTY
ENGINEER'S OFFICE

19501 HWY. 64,
ANAMOSA, IOWA,
52205 (319)462-3785