

Instrument #: 2016-2529  
 09/13/2016 10:42:00 AM Total Pages: 1  
 ZSC SECTION CORNER CERTIFICATE  
 Recording Fee: \$7.00 Transfer Tax: \$0  
 Sheri L. Jones, Recorder, Jones County Iowa



PREPARED BY: SCOTT SURVEY, INC. P.O. BOX 315 CENTER POINT IOWA 52213 319-540-5263

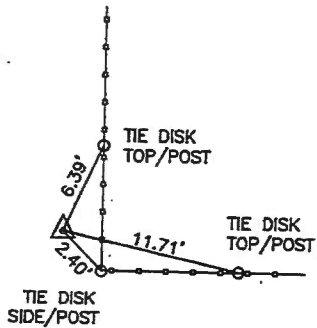
# U.S. PUBLIC LAND SURVEY CORNER CERTIFICATE

FOR LAND SURVEY MONUMENTS SITUATED IN SECTION 3, TOWNSHIP 85 NORTH, RANGE 4 WEST, OF THE FIFTH PRINCIPAL MERIDIAN, JONES COUNTY, IOWA

REASON FOR PREPARING CERTIFICATE:

- A) THERE IS NO CERTIFICATE FOR THE CORNER ON FILE WITH THE RECORDER. (NW CORNER NE 1/4 SW 1/4)
- B) CORNER TIES DIFFER FROM PREVIOUSLY RECORDED CERTIFICATE. (CENTER)

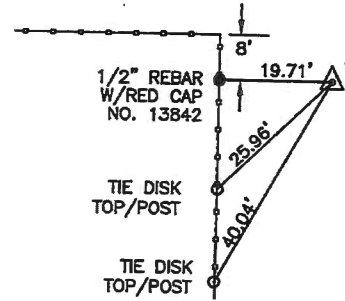
## RECOVERY TIE DRAWING



NW CORNER  
 NE 1/4 SW 1/4  
 SECTION 3, T85N, R4W  
 SET 1/2" REBAR  
 W/RED CAP NO. 13842



LOCATION



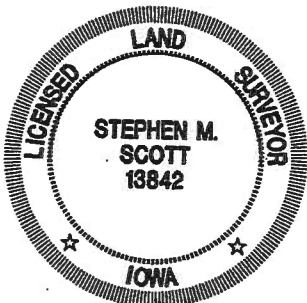
CENTER OF SECTION  
 SECTION 3, T85N, R4W  
 SET 1/2" REBAR  
 W/RED CAP NO. 13842

MONUMENT DESCRIPTION AND REMARKS :

SET MONUMENT ACCORDING TO A SURVEY OF PARCEL 2016-35, THE PLAT OF WHICH CAN BE FOUND AT DOCUMENT 2016-1512 IN THE OFFICE OF THE RECORDER, JONES COUNTY, IOWA.

MONUMENT DESCRIPTION AND REMARKS :

SET MONUMENT ACCORDING TO A SURVEY OF PARCEL 2016-35, THE PLAT OF WHICH CAN BE FOUND AT DOCUMENT 2016-1512 IN THE OFFICE OF THE RECORDER, JONES COUNTY, IOWA. THE CORNER WAS SET AT THE CALCULATED INTERSECTION OF LINES BETWEEN QUARTER CORNERS BASED ON AN ACQUISITION PLAT FOUND AT DOCUMENT 2000-0836 AND IN AGREEMENT WITH OTHER SURVEYS IN THE SECTION. PREVIOUS CORNER CERT. FOUND AT DOCUMENT 2000-0834 REFERS TO A LOCATION AND MONUMENT 81.53' SOUTHWESTERLY OF THE NEWLY SET LOCATION.



I hereby certify that this land surveying document was prepared and the related survey work was performed by me or under my direct personal supervision and that I am a duly licensed Land Surveyor under the laws of the State of Iowa.

*[Signature]* 2016  
 STEPHEN M. SCOTT, L.S. Iowa Lic. No. 13842  
 My license renewal date is December 31, 2016.

- GOVERNMENT CORNER
- 1/2" TIE PIN SET
- CENTERLINE
- EXISTING FENCE LINE
- R.O.W. LINE

### U.S. PUBLIC LAND SURVEY CORNER CERTIFICATE

SECTION 3, T85N, R4W  
 NW CORNER NE 1/4 SW 1/4  
 CENTER OF SECTION

PROJECT NO.  
 1664001

2000 0834

FILED  
RECORDERS OFFICE  
JONES COUNTY IOWA

00 MAR 10 AM 8:42

653

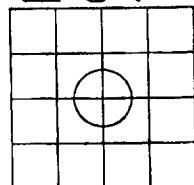
JONES COUNTY ENGINEER, <sup>NO FEE</sup> MARIE KRUTZFIELD  
RECORDED BY: 64, ANAMOSA, IOWA

# UNITED STATES PUBLIC LAND SURVEY CORNER CERTIFICATE

LAND SURVEY MONUMENTS SITUATED IN SECTION 3, TOWNSHIP 8<sup>E</sup>  
NORTH, RANGE 4 WEST OF THE 5TH P.M., JONES COUNTY, IOWA



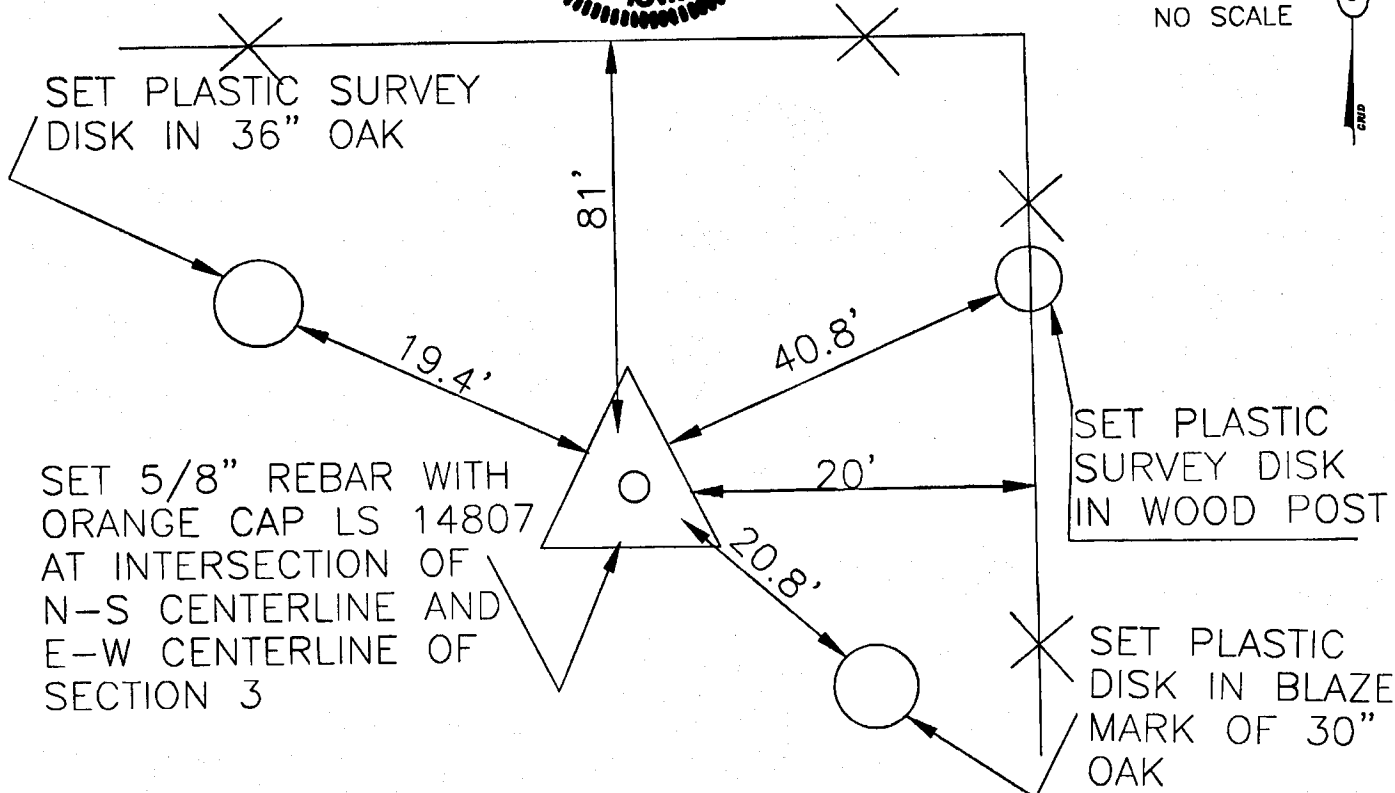
SEC. 3



NO SCALE



*Handwritten note:* on land



PREVIOUSLY RECORDED IN BOOK N/A, PAGE N/A  
MONUMENT DESCRIPTION AND HOW ESTABLISHED SET  
5/8"X24" REBAR WITH ORANGE CAP LS 14807 AT THE  
INTERSECTION OF THE N-S CENTERLINE AND THE E-W  
CENTERLINE OF SECTION 3, T85N, R4W.

I hereby declare that this plat, survey or report was made by me or under my direct personal supervision and that I am a duly registered Land Surveyor under the laws of the State of Iowa.

Signed:

Joseph D. Tjepkes L.S. Iowa Reg. No. 14807  
My Registration Renewal Date is December 31, 2000

CORNERS TO BE INDEXED

CORNER	SECTION	TOWNSHIP	RANGE
CENTER	3	85N	4W

JONES COUNTY ENGINEER  
19501 HWY. 64,  
ANAMOSA, IOWA