

1999 3647

FILED
RECORDERS OFFICE
JONES COUNTY IOWA

99 OCT 13 AM 10:14

MARIE KRUTZFIELD
RECORDER *6.00 pd*

BRAIN ENGINEERING, INC., 777 10TH STREET, MARION, IOWA 52302 PH. (319) 373-1318

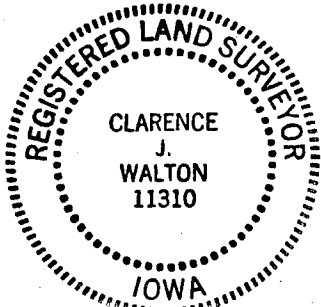
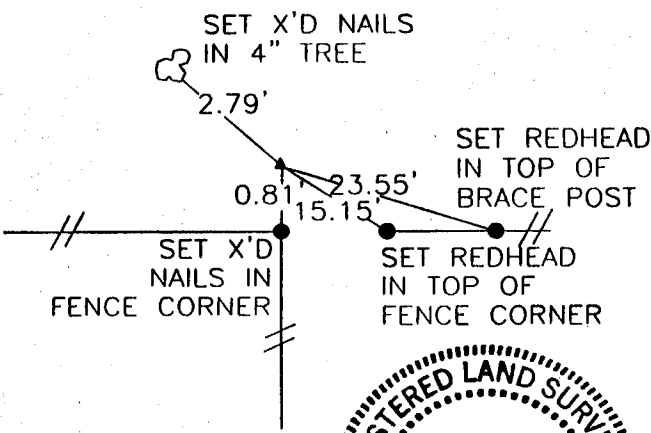
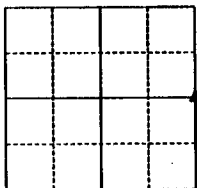
UNITED STATES PUBLIC LAND SURVEY CORNER CERTIFICATE

LAND SURVEY MONUMENTS SITUATED IN SECTION 3, TOWNSHIP 85 NORTH
RANGE 4 WEST OF THE 5TH P.M., JONES COUNTY, IOWA.

NO SCALE



E 1/4



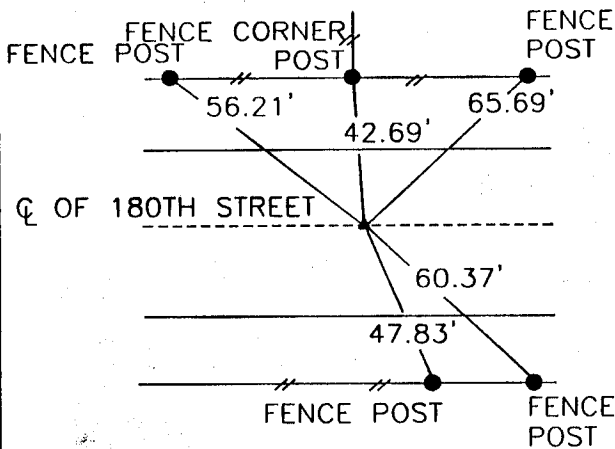
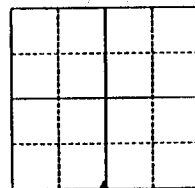
PREVIOUSLY RECORDED IN BOOK _____ PAGE _____

MONUMENT DESCRIPTION AND HOW ESTABLISHED _____
SET 1/2" REBAR WITH YELLOW CAP #11310

NO SCALE



S 1/4



PREVIOUSLY RECORDED IN BOOK _____ PAGE _____

MONUMENT DESCRIPTION AND HOW ESTABLISHED _____
SET 1/2" REBAR WITH YELLOW CAP #11310

I hereby declare that this plat, survey or report was made by me or under my direct personal supervision and that I am a duly registered Land Surveyor under the laws of the State of Iowa.

Signed *Clarence J. Walton* Date 10/2/99
Clarence J. Walton L.S. Iowa Reg No. 11310
My Registration Renewal Date Is December 31, 1999

CORNERS TO BE INDEXED

CORNER	SECTION	TOWNSHIP	RANGE
E 1/4	3	T85N	R4W
S 1/4	3	T85N	R4W

BRAIN ENGINEERING, INC.

777 10TH STREET
MARION, IOWA 52302 25049-10
(319) 373-1318

854030-101299, 85410c-101299