

2005 1628

FILED
RECORDERS OFFICE
JONES COUNTY IOWA

05 MAY 12 AM 10:40

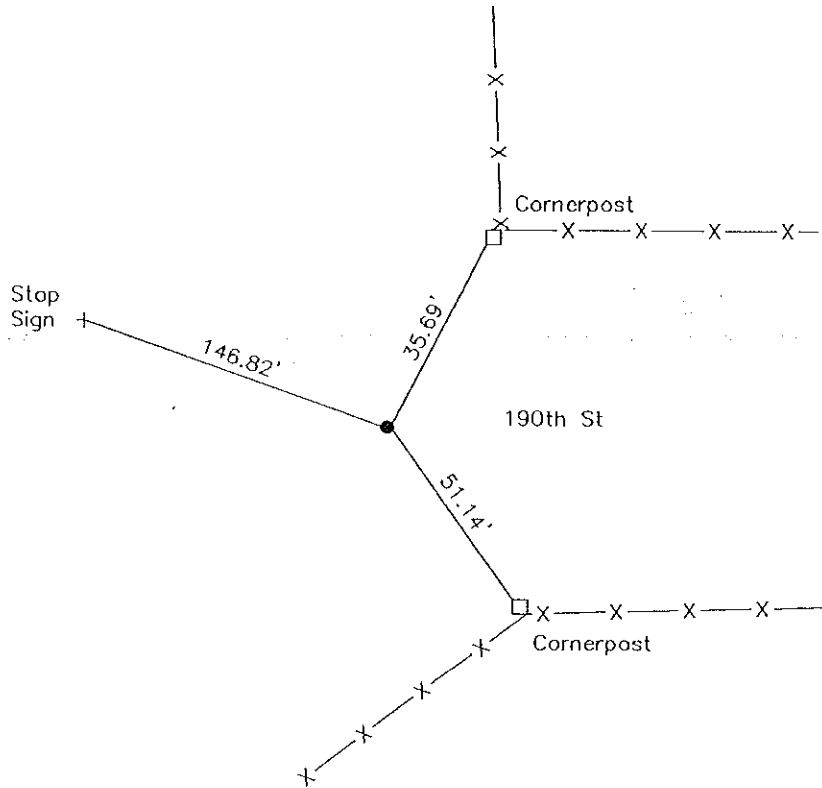
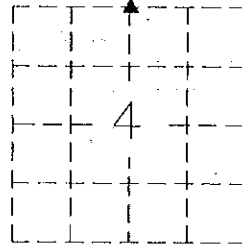
MARIE KRUTZFIELD
RECORDER 7.00 Pd

Preparer: Harold E Dillon Coralville, Iowa 52241 319 351 5647

United States Public Land Survey Corner Certificate

Land Survey corner in Section 4 Township 85 North, Range 4 West of the 5th P.M. Jones County, Iowa

No Scale



N 1/4 Corner
Section 4-85-4
Found 5/8" Iron Pin no cap

I hereby certify that this plat and survey was made by me or under my direct supervision and that I am a duly licensed Land Surveyor under the laws of the State of Iowa.

Harold E Dillon 5-11-05

Harold E. Dillon #6581 My license expires 12/31/2006



Unless otherwise noted all distances are shown in feet and decimals thereof.

Surveyed 5/4/05
Page 1 of 1

Job # 2005.006

2005 1764

FILED
RECORDERS OFFICE
JONES COUNTY IOWA

05 MAY 24 AM 10:58

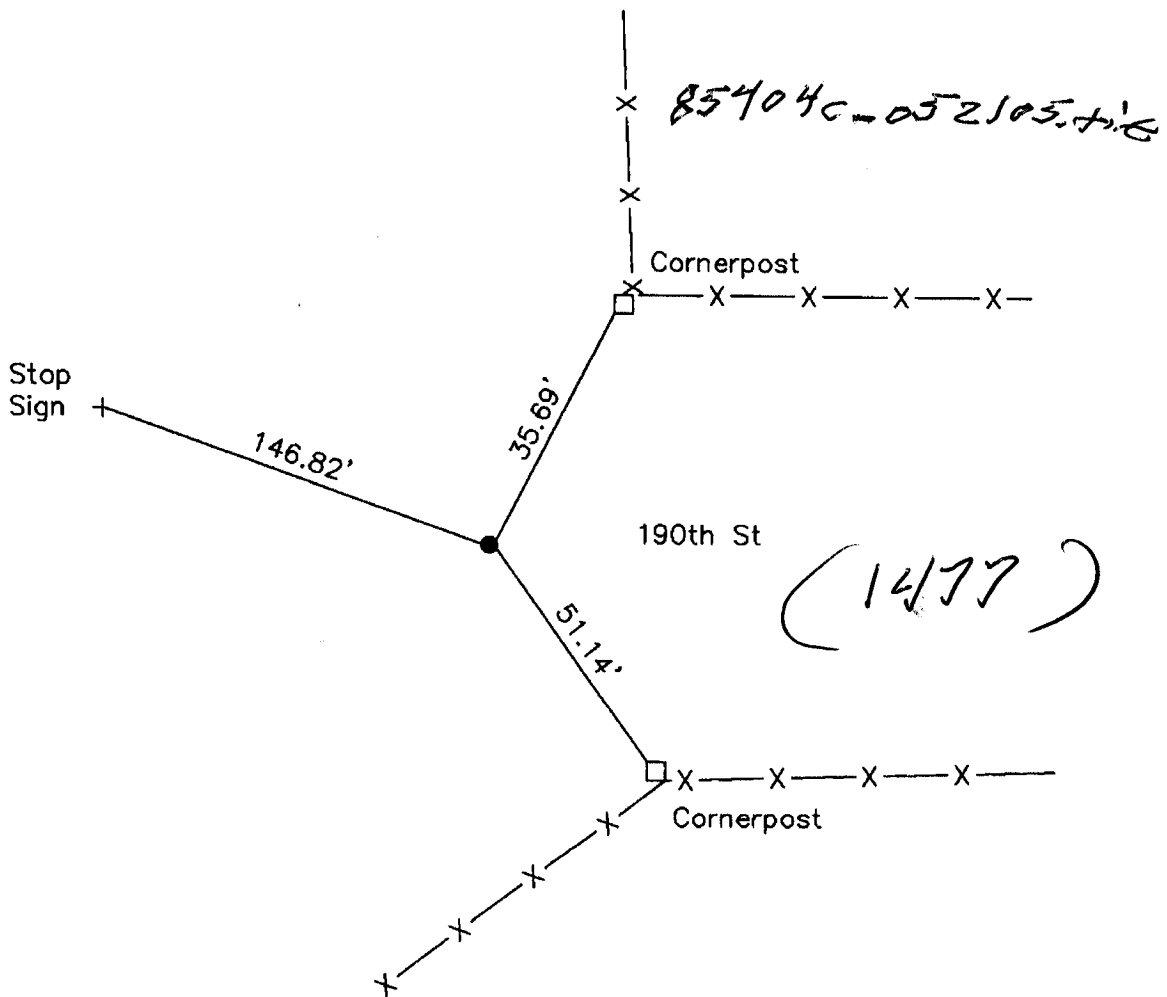
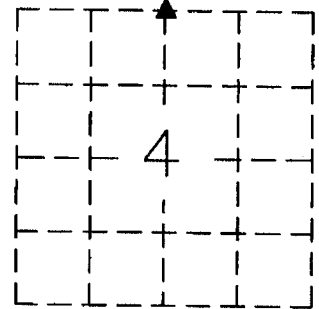
MARIE KRUTZFIELD
RECORDER 7.00 Pd

Preparer: Harold E Dillon Coralville, Iowa 52241 319 351 5647

United States Public Land Survey Corner Certificate

Land Survey corner in Section 4 Township 85 North, Range 4 West of the 5th P.M. Jones County, Iowa

No Scale



N 1/4 Corner
Section 4-85-4
Found 5/8" Iron Pin no cap

I hereby certify that this plat and survey was made by me or under my direct supervision and that I am a duly Licensed Land Surveyor under the laws of the State of Iowa.

Harold E Dillon 5-21-05



Unless otherwise noted all distances are shown in feet and decimals thereof.

Surveyed 5/4/05
Page 1 of 1

Job# 2005.006

Harold E. Dillon #6581 My license expires 12/31/2006

D:\Program Files\Calson Software\XME\HUSPL\0205000.dwg, 5/7/2005 10:47:40 AM

K

2003 2741

FILED
RECORDERS OFFICE
JONES COUNTY IOWA

03 JUN 13 AM 8:12

MARIE KRUTZFIELD
RECORDER 6.00 Pd

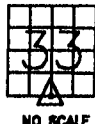
J.D. Tjepkes, LS.14807, 23428 RIDGE ROAD, ANAMOSA, IOWA, 52205. (319-462-6067)

UNITED STATES PUBLIC LAND SURVEY CORNER CERTIFICATE

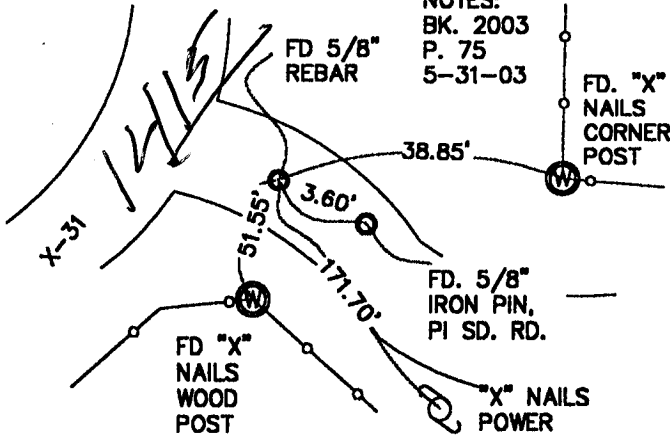
LAND SURVEY MONUMENTS SITUATED IN SECTION 33, TOWNSHIP 86
NORTH, RANGE 4 WEST OF THE 5TH P.M., JONES COUNTY, IOWA

CORNERS TO BE INDEXED

CORNER SECTION TOWNSHIP RANGE
S 1/4 33 86N 4W
OFFICE FILE NO.
86433w_060203.jpg



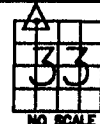
FIELD NOTES:
BK. 2003
P. 75
5-31-03



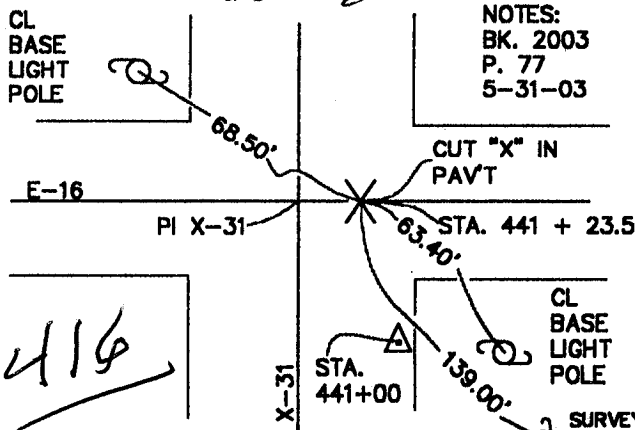
PREVIOUSLY RECORDED IN BOOK NA PAGE NA
MONUMENT DESCRIPTION AND HOW ESTABLISHED
FD. 5/8" REBAR & "X" NAILS IN FENCE
POSTS. REBAR IS SOUTH WEST OF FD. 5/8"
IRON PIN USED AS PI OF SIDE ROAD. TIES AS
INDICATED.

CORNERS TO BE INDEXED

CORNER SECTION TOWNSHIP RANGE
NWNENW 33 86N 4W
OFFICE FILE NO.
86433b_060203.jpg



FIELD NOTES:
BK. 2003
P. 77
5-31-03



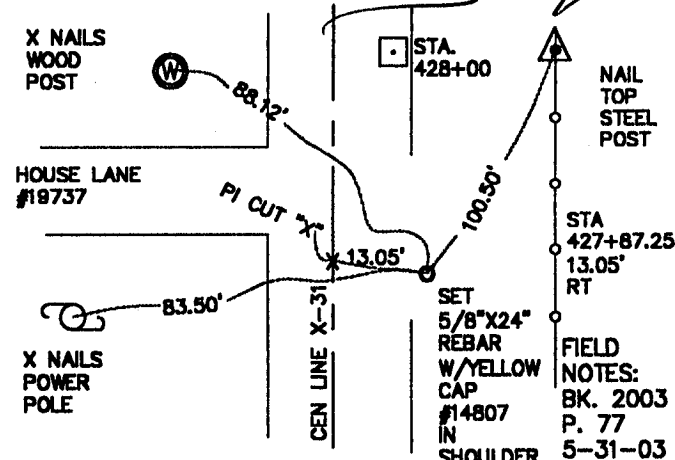
PREVIOUSLY RECORDED IN BOOK NA PAGE NA
MONUMENT DESCRIPTION AND HOW ESTABLISHED
PER BREAKDOWN OF NW QT. SECTION 33 CUT "X" IN
INTERSECTION OF X-31 & E-16. TIED AS INDICATED.

CORNERS TO BE INDEXED

CORNER SECTION TOWNSHIP RANGE
NWSNW 33 86N 4W
OFFICE FILE NO.
86433g_060203.jpg



NAIL
TOP
STEEL
POST



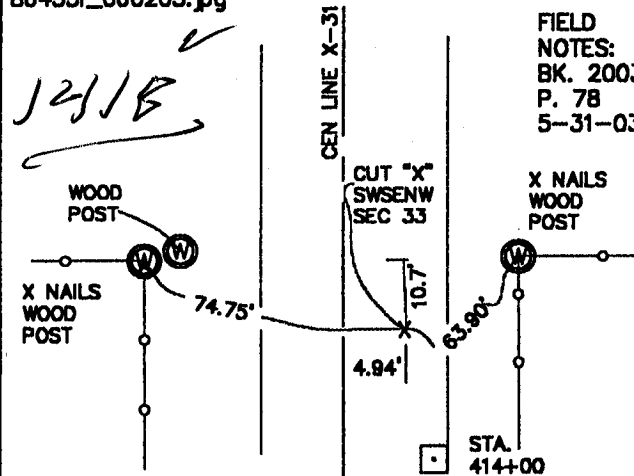
PREVIOUSLY RECORDED IN BOOK NA PAGE NA
MONUMENT DESCRIPTION AND HOW ESTABLISHED
PER BREAKDOWN OF NW QT. SEC. 33 T86N R4W, SET
5/8"X24" REBAR W/YELLOW CAP #14807 AT STA.
427+87.25 13.05' RT. IN SHOULDER OF X-31. TIES AS
INDICATED.

CORNERS TO BE INDEXED

CORNER SECTION TOWNSHIP RANGE
SWSNW 33 86N 4W
OFFICE FILE NO.
86433i_060203.jpg



FIELD
NOTES:
BK. 2003
P. 78
5-31-03



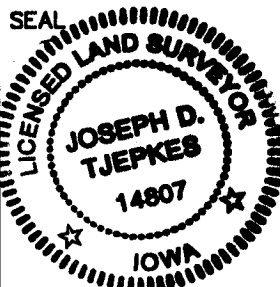
PREVIOUSLY RECORDED IN BOOK NA PAGE NA
MONUMENT DESCRIPTION AND HOW ESTABLISHED
PER BREAKDOWN OF NW QT. SEC.33 T86N R4W, CUT "X" IN PCC
PAVEMENT, 4.94' RT OF STA 414+51.35. TIES AS INDICATED.

I hereby declare that this plat, survey or report was made by me or under my direct personal supervision and that I am a duly registered Land Surveyor under the laws of the State of Iowa.

Signed:

Joseph D. Tjepkes 6-13-03

Joseph D. Tjepkes L.S. Iowa Reg. No. 14807
My Registration Renewal Date is December 31, 2004



J.D. Tjepkes LS 14807
23428 RIDGE ROAD
ANAMOSA, IOWA, 52205
(319-462-6067)

THIS IS NOT A CERTIFICATION

JONES COUNTY ENGINEER'S OFFICE, 19501 HWY. 64, ANAMOSA, IOWA, 52205 (319)462-3785

UNITED STATES PUBLIC LAND SURVEY CORNER CERTIFICATE

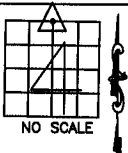
LAND SURVEY MONUMENTS SITUATED IN SECTION 4, TOWNSHIP 85 NORTH, RANGE 4 WEST OF THE 5TH P.M., JONES COUNTY, IOWA

CORNERS TO BE INDEXED

CORNER SECTION TOWNSHIP RANGE
N-QUARTER 4 85N 4W

OFFICE FILE NO.

85404c_062204.tif



1477

DUG 4'X8'X8' HOLE ON CENTERLINE OF TOWNSHIP ROAD AND ON LINE WITH THE NORTH QUARTER FENCE.

(NOTHING FOUND)

REF:
JONES COUNTY SURVEY CREW (KIRCHOFF)
1935, JONES COUNTY CORNER STONE BOOK
10, PAGE 8.

VV

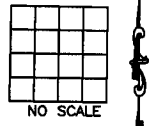
PREVIOUSLY RECORDED IN BOOK _____, PAGE _____
MONUMENT DESCRIPTION AND HOW ESTABLISHED _____

85404c - 012405.tif

CORNERS TO BE INDEXED

CORNER SECTION TOWNSHIP RANGE

OFFICE FILE NO.

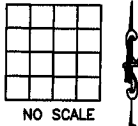


PREVIOUSLY RECORDED IN BOOK _____, PAGE _____
MONUMENT DESCRIPTION AND HOW ESTABLISHED _____

CORNERS TO BE INDEXED

CORNER SECTION TOWNSHIP RANGE

OFFICE FILE NO.

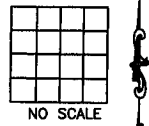


PREVIOUSLY RECORDED IN BOOK _____, PAGE _____
MONUMENT DESCRIPTION AND HOW ESTABLISHED _____

CORNERS TO BE INDEXED

CORNER SECTION TOWNSHIP RANGE

OFFICE FILE NO.



PREVIOUSLY RECORDED IN BOOK _____, PAGE _____
MONUMENT DESCRIPTION AND HOW ESTABLISHED _____

~~I hereby declare that this plat, survey or report was made by me or under my direct personal supervision and that I am a duly registered Land Surveyor under the laws of the State of Iowa.~~

Signed:

SEAL

JONES COUNTY ENGINEER'S OFFICE

19501 HWY. 64,
ANAMOSA, IOWA,
52205 (319)462-3785