

COPY

Jones County Marie Krutzfield Recorder  
 Fee Book 2012 3132  
 10/29/2012 @0142PM # Pages 1  
 ZSC SEC COR CERT  
 Total Fees: \$0.00

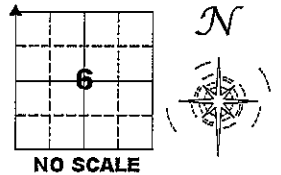
PREPARED BY  
 CLARENCE J. WALTON, JONES COUNTY ENGINEER'S OFFICE, 19501 HWY. 64, ANAMOSA, IOWA, 52205 (319) 462-3785

# UNITED STATES PUBLIC LAND SURVEY CORNER CERTIFICATE

LAND SURVEY MONUMENTS SITUATED IN SECTION 6, TOWNSHIP 85 NORTH,  
 RANGE 4 WEST OF THE 5TH PRINCIPAL MERIDIAN, JONES COUNTY, IOWA.

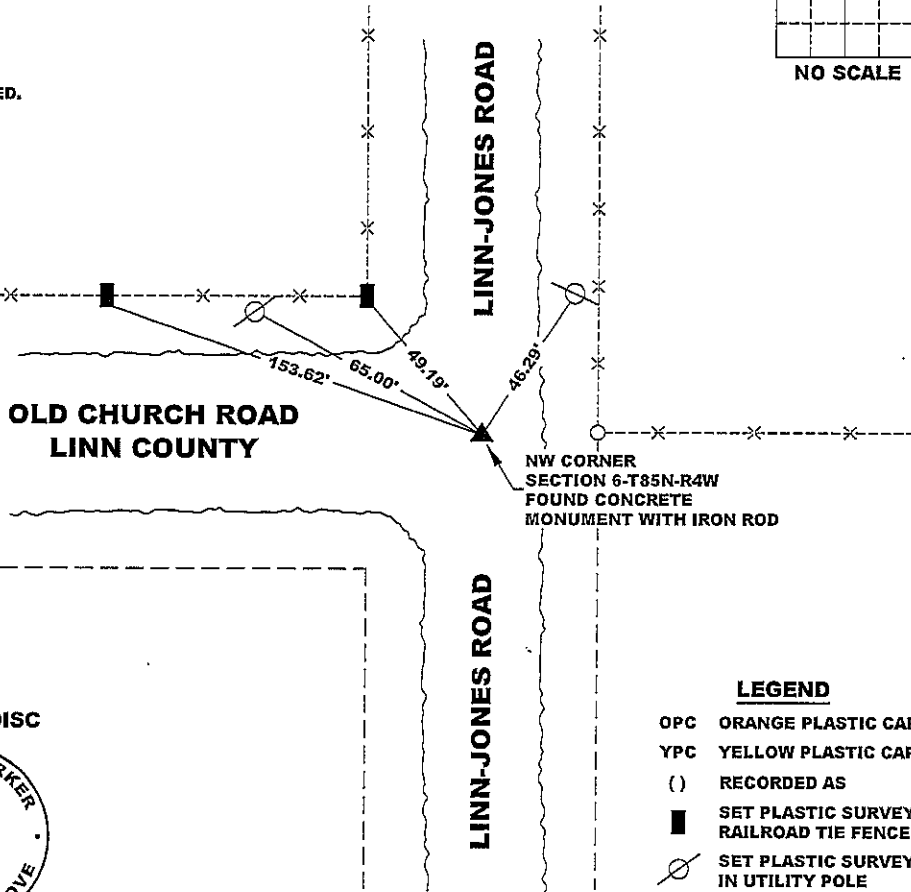
STATE PLANE COORDINATE  
 NAD 83 IOWA NORTH  
 N: 3546569.62  
 E: 5499880.46

CORNER SECTION TOWNSHIP RANGE  
 NW 6 85N 4W



NOTES:

- 1) THE STATE PLANE COORDINATES AS SHOWN ARE FOR CONVENIENCE ONLY. THE TIES AS SHOWN SHOULD BE USED TO REPLACE THE CORNER, IF DESTROYED.
- 2) COORDINATES AS SHOWN ARE GRID COORDINATES AND BASED ON JONES COUNTY G.P.S. CONTROL NETWORK WHICH IN TURN IS BASED ON NAD 83 IOWA NORTH DATUM.
- 3) ALL MEASUREMENTS ARE IN FEET AND DECIMALS THEREOF.
- 4) \* GRID DISTANCE, BASED ON JONES COUNTY G.P.S. CONTROL NETWORK.



"SURVEY MARKER" SIGN



SURVEY DISC



LEGEND

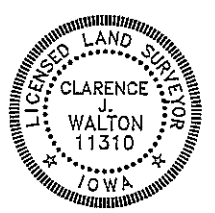
- OPC ORANGE PLASTIC CAP
- YPC YELLOW PLASTIC CAP
- ( ) RECORDED AS
- SET PLASTIC SURVEY DISC IN RAILROAD TIE FENCE POST
- ⊗ SET PLASTIC SURVEY DISC IN UTILITY POLE

PAGE 1 of 1

PREVIOUSLY RECORDED IN BOOK 305, PAGE 178

MONUMENT DESCRIPTION AND HOW ESTABLISHED FOUND CONCRETE MONUMENT WITH IRON ROD PER TIES RECORDED IN BOOK 305, PAGE 178 IN THE JONES COUNTY, IOWA RECORDER'S OFFICE. MONUMENT IS NO LONGER FLUSH WITH ROAD SURFACE, IT WAS FOUND 5" BELOW PRESENT ROAD SURFACE. NEW TIES AS SHOWN.

DATE OF SURVEY: 10/24/12 FIELD BOOK: MISCELLANEOUS 2012, PAGE 157



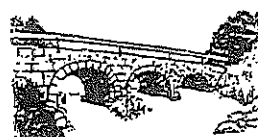
I hereby certify that this land surveying document and the related survey work was performed by me or under my direct personal supervision and that I am a duly registered Land Surveyor under the laws of the State of Iowa.  
 Signed: *Clarence J. Walton* 10/29/12  
 Clarence J. Walton, L.S.  
 My Registration Renewal Date is December 31, 2013  
 Iowa License Number 11310  
 Pages or sheets covered by this seal: 1 of 1.

- A. THERE IS NO CERTIFICATE FOR THE CORNER ON FILE WITH THE RECORDER OF THE COUNTY IN WHICH THE CORNER IS LOCATED.
- B. THE CORNER MONUMENT HAS BEEN REPLACED OR MODIFIED.
- C. THE SURVEYOR IN RESPONSIBLE CHARGE OF THE LAND SURVEYING ACCEPTS A CORNER POSITION THAT DIFFERS FROM THAT SHOWN IN THE PUBLIC RECORDS OF THE COUNTY IN WHICH THE CORNER IS LOCATED.
- D. THE REFERENCE TIES REFERRED TO IN AN EXISTING PUBLIC RECORD NO LONGER EXIST.
- E. ADDITIONAL TIES TAKEN TO UPDATE OLDER TIES.

CORNERS TO BE INDEXED

CORNER	SECTION	TOWNSHIP	RANGE
NW CORNER	6	85N	4W
NE CORNER	1	85N	5W
SE CORNER	36	86N	5W
SW CORNER	31	86N	4W

JONES COUNTY ENGINEER'S OFFICE



19501 HWY. 64, ANAMOSA, IOWA 52205  
 (319) 462-3785

UNITED STATES PUBLIC LAND SURVEY CORNER CERTIFICATE

OF

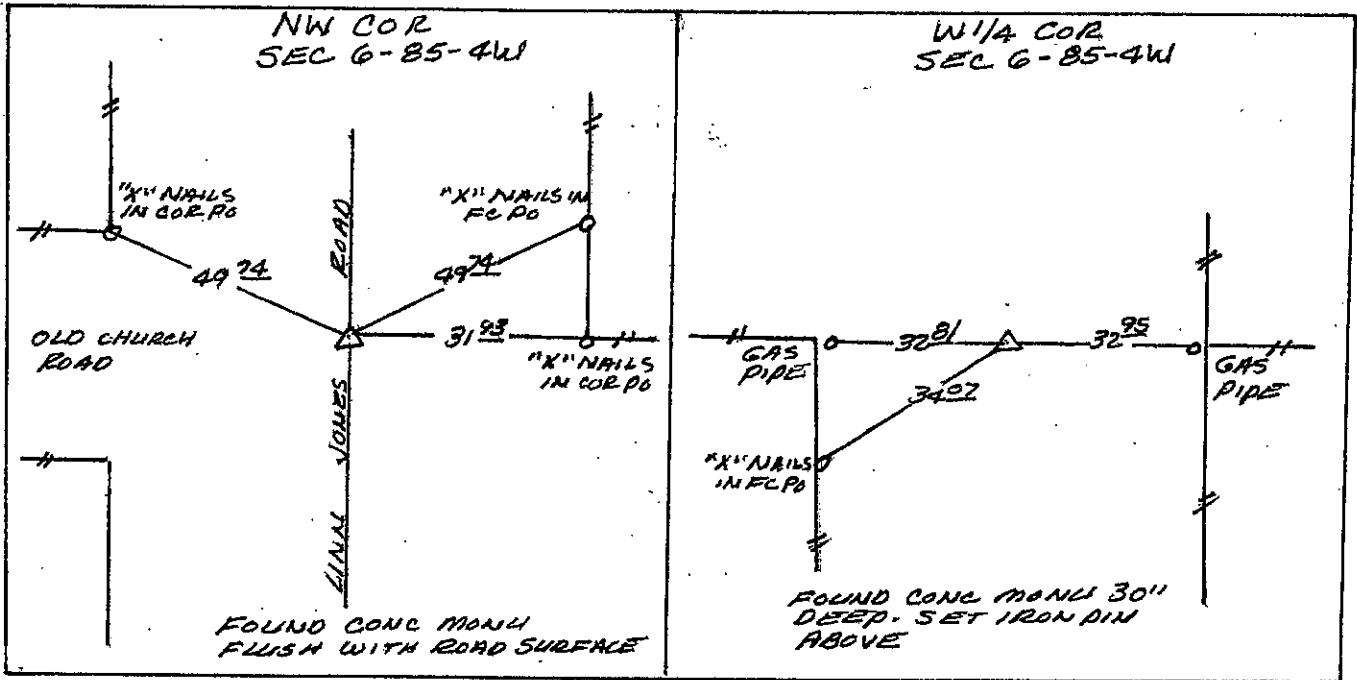
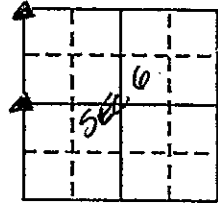
Land Survey Monuments situated in Section 6, Township 85 NORTH, Range 4 WEST, of the Fifth Principal Meridian, JONES County, Iowa. Previously recorded in DOES NOT APPLY in County Recorder's Office.

(Show reason for preparing this certificate, the evidence and detailed procedures used in establishing the corner positions and monumentation found or placed.)

Monument Description and Remarks: RE-REFERENCING CORNERS

PLAN - VIEW

(Show a minimum of three reference ties to durable physical objects, relevant monuments and physical conditions that will enable recovery of the corner.)



I hereby certify that the survey work was completed and this certificate was prepared by me or under my direct personal supervision and that I am a duly registered land surveyor under the laws of the state of Iowa.

Signature: Larry R. McGuire  
Name typed or printed: LARRY R. MCGUIRE

Date: 7/24/91 Reg. No. 9019

Corners	Section	Twp	Range
NW COR	6	85	4W
W 1/4 COR	6	85	4W

213

FILED  
RECORDERS OFFICE  
JONES COUNTY IOWA

91 JUL 25 AM 8:25

BOOK 305 PAGE 178  
BONIS JEANNE HERRIN  
RECORDER  
500

SEAL

