

2002 0153

FILED  
RECORDERS OFFICE  
JONES COUNTY IOWA

02 JAN 11 AM 10:30

MARIE KRUTZFIELD  
RECORDER 6.00 Pd

Prepared by: SCHNEIDER Land Surveying and Planning P.O. Box 105 Peosta, Iowa 52068 563-556-9055

**UNITED STATES PUBLIC LAND SURVEY CORNER CERTIFICATE OF**

Land Survey Monuments situated in Section 31, Township 86 North, Range 4 West of the Fifth Principal Meridian, Jones County, Iowa.

Previously recorded IN BOOK 338, PAGE 47 (NE COR. SEC. 31, aka SE COR. SEC. 30).

(BOOK, PAGE / DIST. NO. / CABINET, SLIDE)

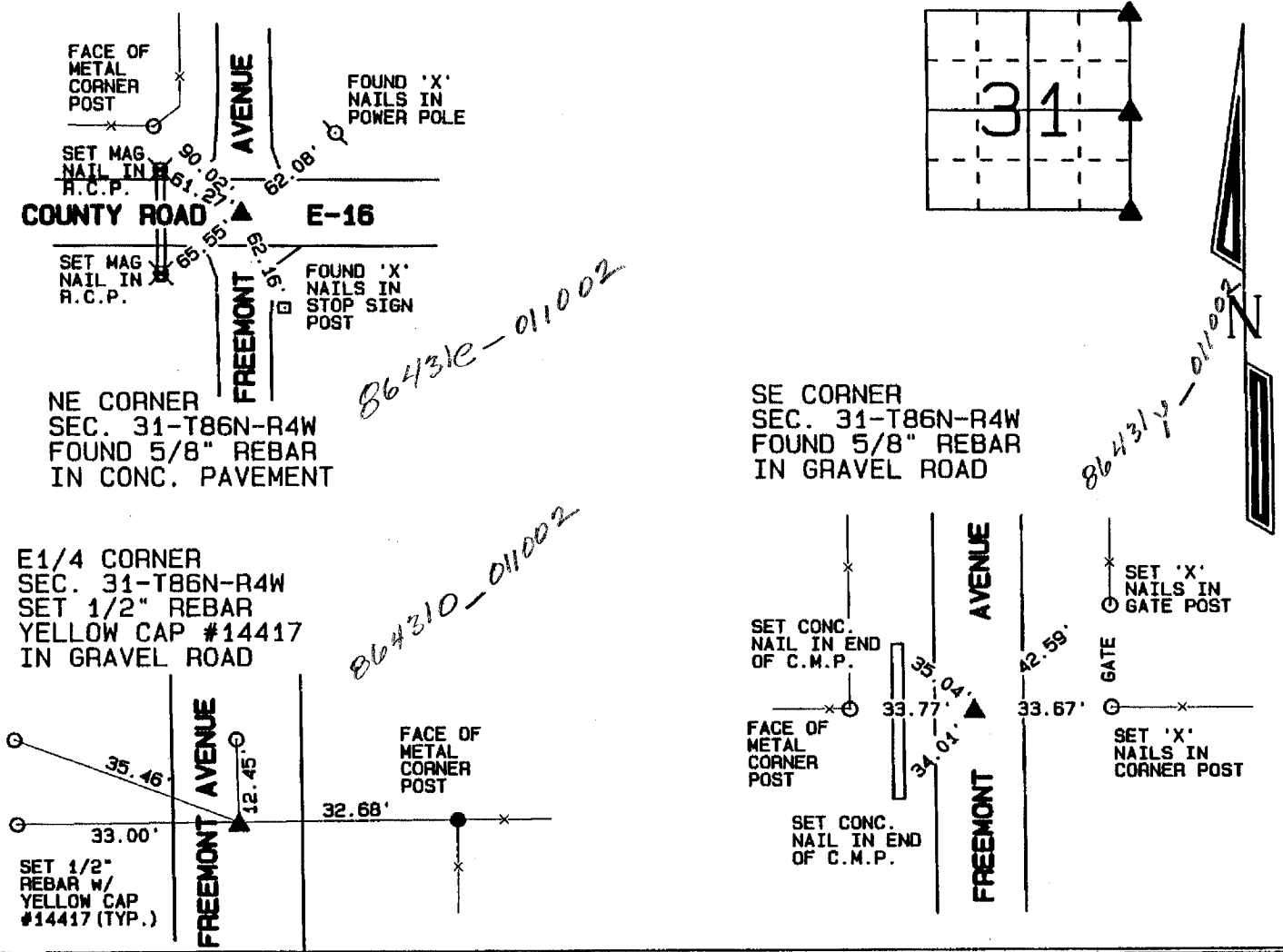
(Show reason for preparing this certificate, the evidence and detailed procedures used in establishing the corner positions and monumentation found or placed.)

Monument Description and Remarks: THE NE CORNER OF SEC. 31-T86N-R4W WAS RETIED AS IT WAS FOUND. ONE TIE HAD BEEN CHANGED AND MORE TIES WERE ADDED. NO MONUMENT WAS FOUND AT THE E1/4 CORNER OF SEC. 31-T86N-R4W. A 1/2" REBAR w/ YELLOW CAP #14417 WAS PLACED AT A SPLIT OF THE ROAD BED AND R.O.W. FENCES. IT WAS PLACED IN LINE WITH THE OCCUPATION FENCE LOCATED EAST OF THE CORNER.

A 5/8" REBAR WAS FOUND IN THE GRAVEL ROAD AT THE SE CORNER OF SEC. 31-T86N-R4W. THE REBAR WAS ACCEPTED AS THE CORNER AND REFERENCE TIED.

**PLAN - VIEW**

(Show a minimum of three reference ties to durable physical objects, relevant monuments and physical conditions that will enable recovery of the corner.)



I hereby certify that this land surveying document was prepared and the related survey work was performed by me or under my direct personal supervision and that I am a duly licensed Land Surveyor under the laws of the State of Iowa.

*David P. Schneider* 1/10/2002

David P. Schneider P.L.S. #14417 Date:  
My license renewal date is December 31, 2003.

Pages or sheets covered by this seal: THIS SHEET ONLY

**List Corners to be Indexed**

Corners	Section	Twp	Range
NE	31	86N	4W
E1/4	31	86N	4W
SE	31	86N	4W

**SCHNEIDER**  
Land Surveying & Planning  
P.O. Box 105 Peosta, Iowa 52068  
Ph. #563-556-9055 Fax #563-556-9054

