

2003 1074
 FILED
 RECORDERS OFFICE
 JONES COUNTY IOWA

03 MAR 13 PM 1:18

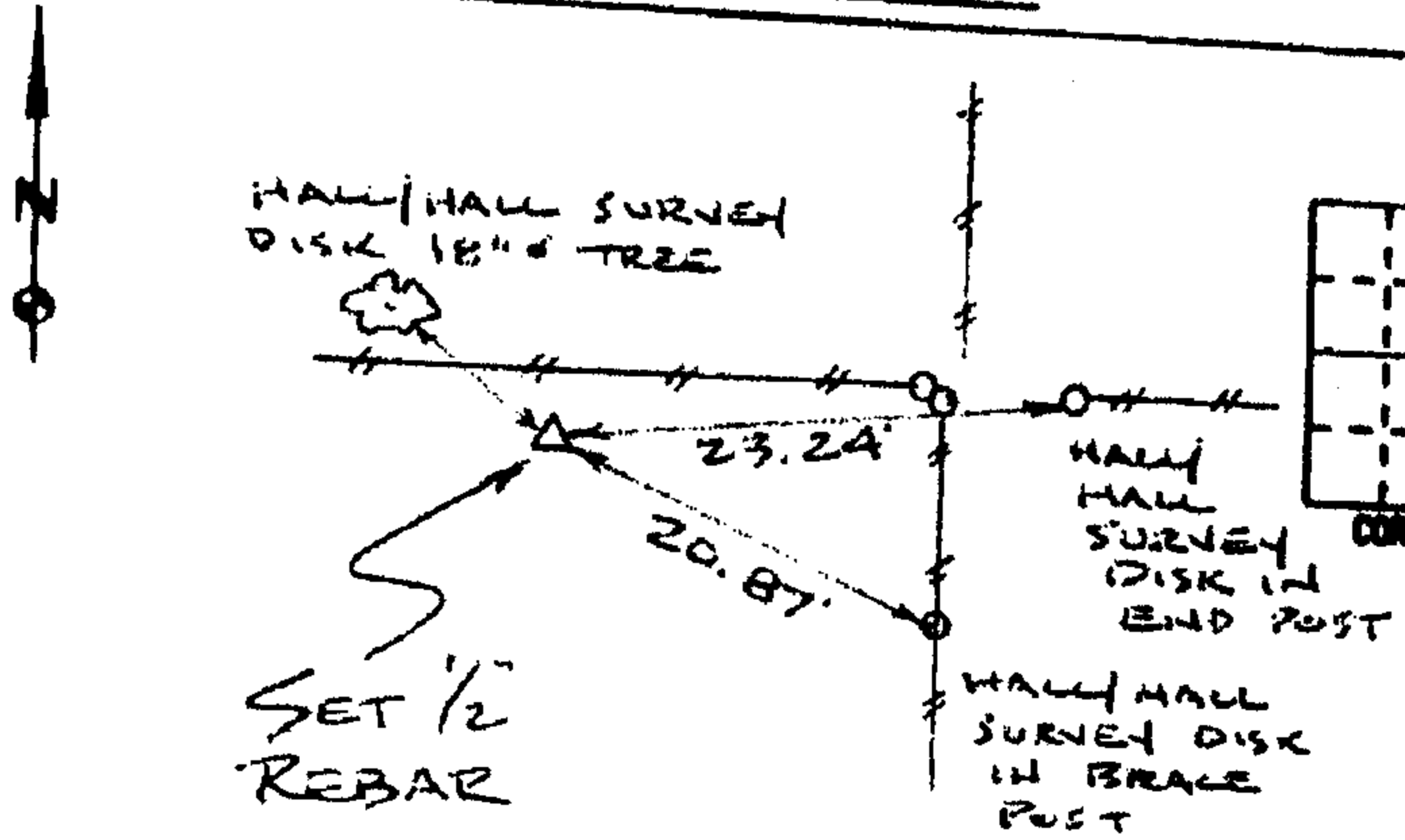
MARIE KRUTZFIELD
 RECORDER 6.00 PD

PREPARED BY HALL & HALL ENGINEERS, INC. 209 29TH STREET N.E. CEDAR RAPIDS, IOWA 52402 (319) 362-9548

LAND SURVEY MONUMENTS SITUATED IN SECTION 6, TOWNSHIP 85 NORTH,
 RANGE 4 WEST, OF THE FIFTH PRINCIPAL MERIDIAN, JONES COUNTY IOWA.

RECOVERY TIE DRAWING

MONUMENT DESCRIPTION AND REMARKS:

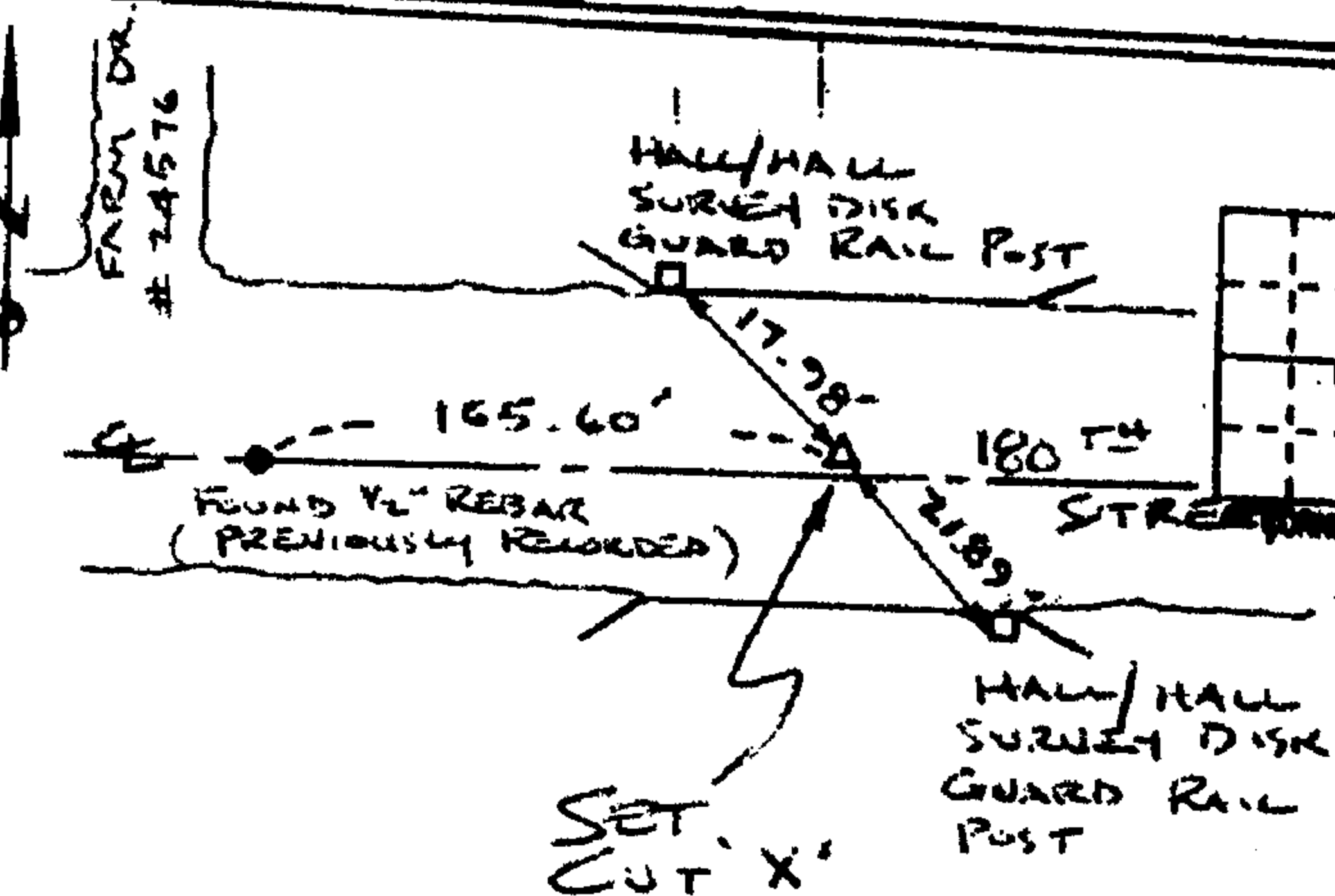


N 1/4 CORNER 6-85-4

REASON FOR PREPARING CERTIFICATE: (A) B, C OR D
 PREVIOUS BOOK _____ PAGE _____
 SET 1/2" REBAR W/ RED L.S.
 CAP # 11954 FLUSH W/
 SURFACE 4' SOUTH OF EAST-
 WEST FENCE AND 18 1/2' WEST
 OF FENCE NORTH-SOUTH

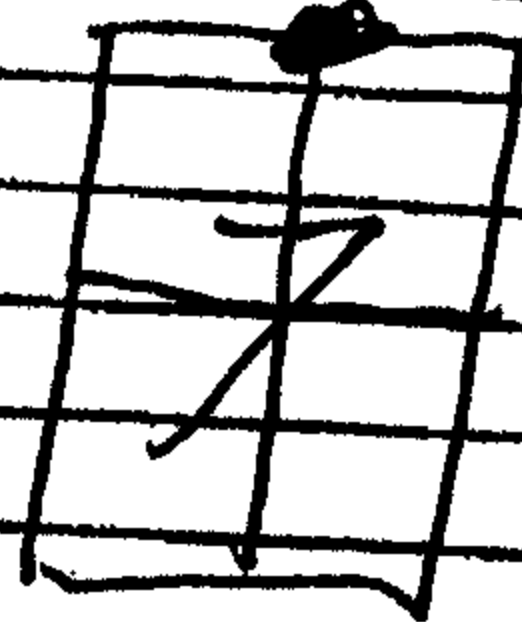
854066-022703

1398



S 1/4 CORNER 6-85-4

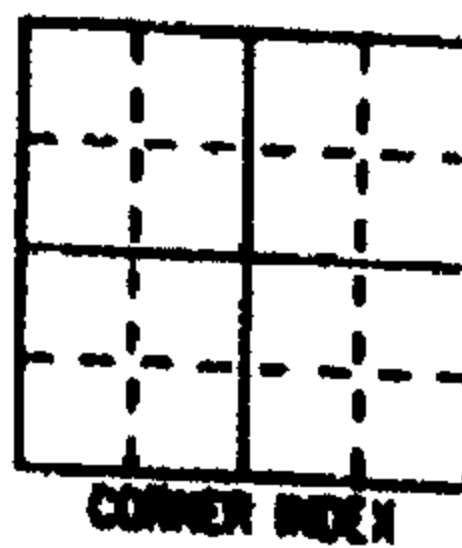
REASON FOR PREPARING CERTIFICATE: A, (C) C OR D
 PREVIOUSLY RECORDED DOCUMENT # 1979/3220
 SET CUT 'X' ON CONCRETE
 BRIDGE 3' NORTH OF E
 180TH STREET



854075-022703

1675

REASON FOR PREPARING CERTIFICATE: A, B, C OR D
 PREVIOUS BOOK _____ PAGE _____



I hereby certify that this (land surveying document) was prepared and the related survey work has performed by me or under my direct personal supervision and that I am a duly licensed Land Surveyor under the laws of the State of Iowa.

Signed: Daniel J. Johnson Date: 2-27-03

Daniel J. Johnson, L.S. 11954
 My license renewal date is December 31, 2004

Pages or sheets covered by this book:
 (Entire submission unless specified here)

REASON FOR PREPARING CERTIFICATE:

- A) THERE IS NO CERTIFICATE FOR THE CORNER ON FILE WITH THE RECORDER OF THE COUNTY IN WHICH THE CORNER IS LOCATED.
- B) CORNER POSITION DIFFERS FROM THAT SHOWN IN THE PUBLIC RECORDS OF THE COUNTY IN WHICH THE CORNER IS LOCATED.
- C) THE CORNER MONUMENT HAS BEEN REPLACED OR MODIFIED.
- D) THE REFERENCE TIES REFERRED TO IN AN EXISTING PUBLIC RECORD ARE INCORRECT OR MISSING.

SHEET NO: U.S. PUBLIC LAND SURVEY CORNER CERTIFICATE

PROJECT NO: CHAD MACHART SURVEY



HALL AND HALL ENGINEERS, INC.
 209 29TH STREET N.E.
 CEDAR RAPIDS, IOWA 52402
 (319) 362-9548

SCALE: NONE
 DATE: 9/18/2000
 P NO: 0558
 P NO: 7080

H

1999 3220

FILED
RECORDERS OFFICE
JONES COUNTY IOWA

99 SEP -8 AM 11:00

MARIE KRUTZFIELD
RECORDER 600 PD

PREPARED BY HALL & HALL ENGINEERS, INC. 209 29TH STREET N.E. CEDAR RAPIDS, IOWA 52402 (319) 382-9548

SECTION CORNER CERTIFICATE

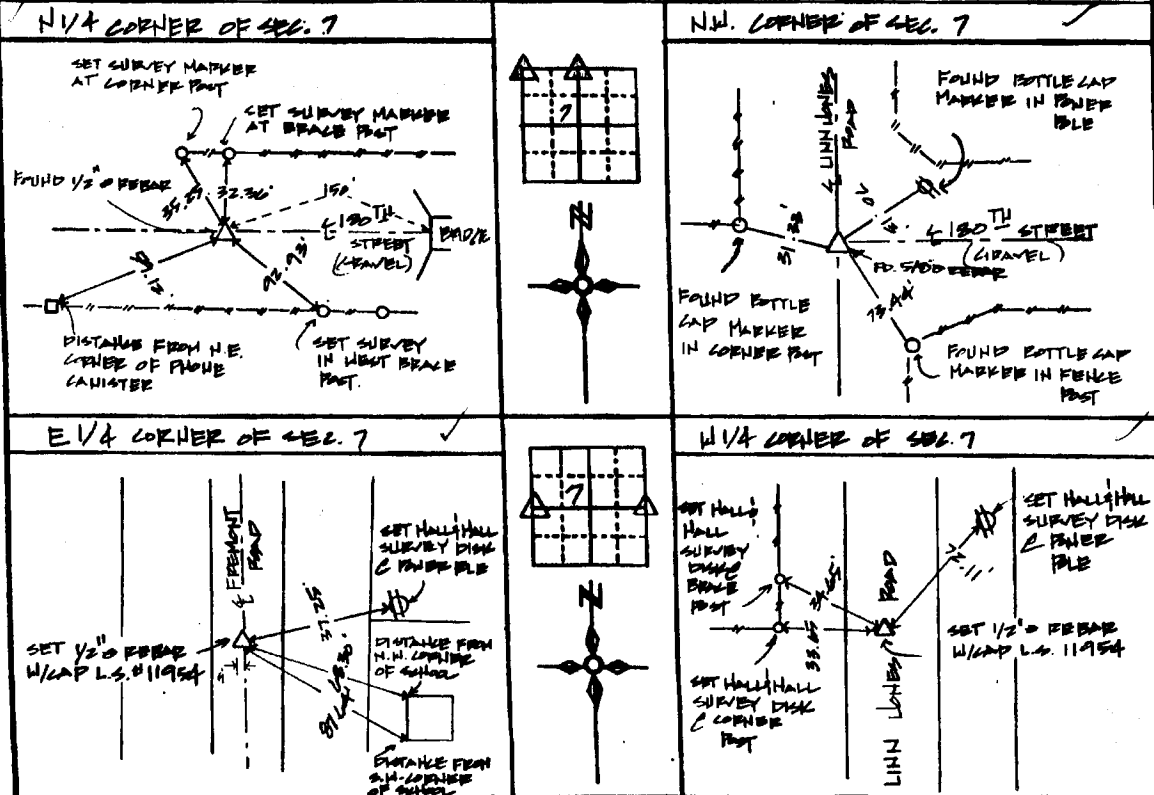
OF
LAND SURVEY MONUMENTS SITUATED IN SECTION 7, TOWNSHIP 35 NORTH,
RANGE 4 WEST, OF THE FIFTH PRINCIPAL MERIDIAN, JONES COUNTY, IOWA.

PREVIOUSLY RECORDED IN BOOK _____ AT PAGE _____

MONUMENT DESCRIPTION AND REMARKS:

- N1/4 CORNER OF SEC. 7, FOUND 1/2" PBR&P
- NW CORNER OF SEC. 7, FOUND 5/8" PBR&P
- E1/4 CORNER OF SEC. 7, SET 1/2" PBR&P W/ CAP L.S. # 11954
- W1/4 CORNER OF SEC. 7, SET 1/2" PBR&P W/ CAP L.S. # 11954

RECOVERY TIE DRAWING



I hereby certify that this land surveying document was prepared and the related survey work was performed by me or under my direct personal supervision and that I am a duly Licensed Land Surveyor under the laws of the State of Iowa.

Signature: *[Signature]* Date: 9-8-99
Daniel J. Johnson, L.S. 11854
My license expires 12/31/2000

Pages or sheets covered by this book:
(Extra submission unless specified here)

REASON FOR PREPARING CERTIFICATE

- A) THERE IS NO CERTIFICATE FOR THE CORNER ON FILE WITH THE RECORDS OF THE COUNTY IN WHICH THE CORNER IS LOCATED
- B) CORNER POSITION DIFFERS FROM THAT SHOWN IN THE PUBLIC RECORDS OF THE COUNTY IN WHICH THE CORNER IS LOCATED
- C) THE CORNER MONUMENT HAS BEEN REPLACED OR MODIFIED
- D) THE REFERENCE TIES REFERRED TO IN AN EXISTING PUBLIC RECORD ARE INCORRECT



LEGEND: Δ GOVERNMENT CORNER ○ PROPERTY CORNER FOUND ○ 1/2" 3/8" W/ L.S. CAP SET --- 1" 1.5" FENCE LINE - - - PROPERTY LINE	SHEET NO. 10 PUBLIC LAND SURVEY RECORD	HALL AND HALL ENGINEERS, INC. 209 29TH STREET N.E. CEDAR RAPIDS, IOWA 52402 (319) 382-9548
	PROJECT: JONES COUNTY ACQUISITION PLATS	
DRAWN BY: T.M.B. CHECKED BY: D.J.J. DATE: 9.28.98 SCALE: N.T.S.		

85407a-090899, 85407c-090899, 85407k-090899, 85407o-090899