

FILED
RECORDERS OFFICE
JONES COUNTY IOWA

00 MAR 10 AM 8:39

MARIE KRUTZFIELD
RECORDER *NO FEE*

Co 59

JONES COUNTY ENGINEER, 19501 HWY. 64, ANAMOSA, IOWA

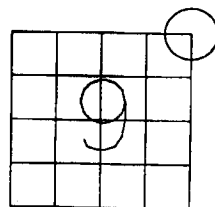
UNITED STATES PUBLIC LAND SURVEY CORNER CERTIFICATE

LAND SURVEY MONUMENTS SITUATED IN SECTION 9, TOWNSHIP 85
NORTH, RANGE 4 WEST OF THE 5TH P.M., JONES COUNTY, IOWA

*ON
Card*

HICKORY GROVE
ROAD

180TH STREET



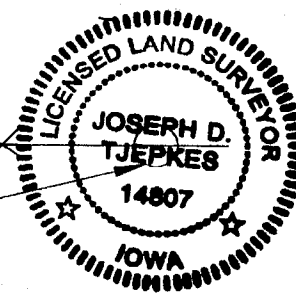
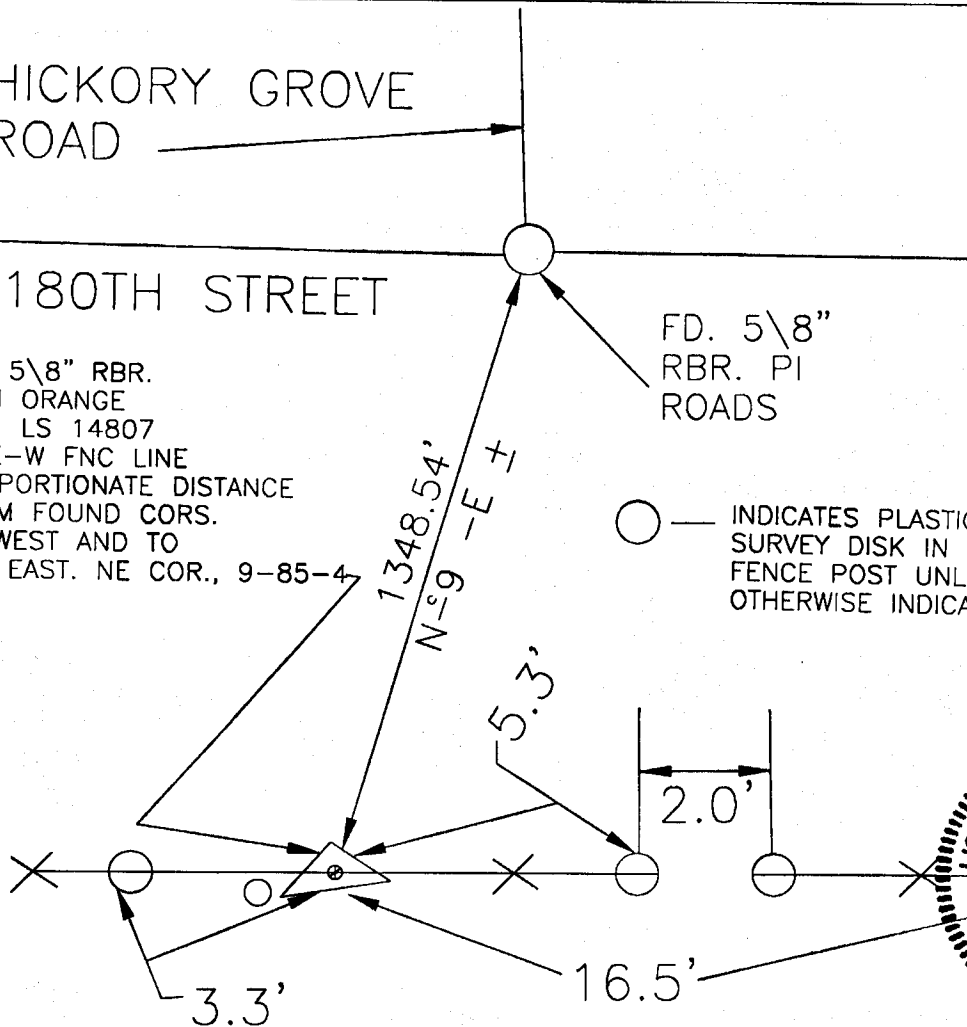
NO SCALE



SET 5/8" RBR.
WITH ORANGE
CAP, LS 14807
IN E-W FNC LINE
PROPORTIONATE DISTANCE
FROM FOUND CORS.
TO WEST AND TO
THE EAST. NE COR., 9-85-4

FD. 5/8"
RBR. PI
ROADS

○ — INDICATES PLASTIC
SURVEY DISK IN
FENCE POST UNLESS
OTHERWISE INDICATED



PREVIOUSLY RECORDED IN BOOK N/A, PAGE N/A

MONUMENT DESCRIPTION AND HOW ESTABLISHED SET 5/8"

REBAR WITH ORANGE CAP LS 14807 IN EAST-WEST FENCE PROPORTIONATE DISTANCE FROM FD.

1/2' REBAR WITH LS CAP 11310 (COR. FILED) AT THE S-1/4 COR. SEC.3, T85N, R4W AND

FROM FOUND PK NAIL AT THE S-1/4 COR. OF SEC. 4, T85N, R4W PER HAROLD DILLON

PLAT OF SURVEY RECORDED AT THE JONES COUNTY RECORDERS OFFICE IN BOOK "N" PAGE 37.

(NO CERTIFICATE PREVIOUSLY FILED ON THIS CORNER)

I hereby declare that this plat, survey or report
was made by me or under my direct personal
supervision and that I am a duly registered Land
Surveyor under the laws of the State of Iowa.

Signed:

Joseph D. Tjepkes 3-14-2000

Joseph D. Tjepkes L.S. Iowa Reg. No. 14807
My Registration Renewal Date is December 31, 2000

CORNERS TO BE INDEXED

CORNER SECTION TOWNSHIP RANGE
NE 9 85N 4
COR.

JONES COUNTY ENGINEER
19501 HWY. 64,
ANAMOSA, IOWA