

COPY

FEE BOOK: 2009 0684 2/27/2009 10:47 AM
 REC FEES: No Fee
 PAGES: 1 Marie Krutzfield, Recorder
 Jones County, Iowa

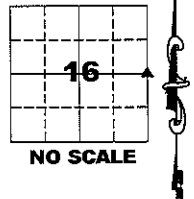
PREPARED BY
 CLARENCE J. WALTON, JONES COUNTY ENGINEER'S OFFICE, 19501 HWY. 64, ANAMOSA, IOWA, 52205 (319) 462-3785

UNITED STATES PUBLIC LAND
 SURVEY CORNER CERTIFICATE
 LAND SURVEY MONUMENTS SITUATED IN SECTION 16, TOWNSHIP 86 NORTH,
 RANGE 4 WEST OF THE 5TH PRINCIPAL MERIDIAN, JONES COUNTY, IOWA.

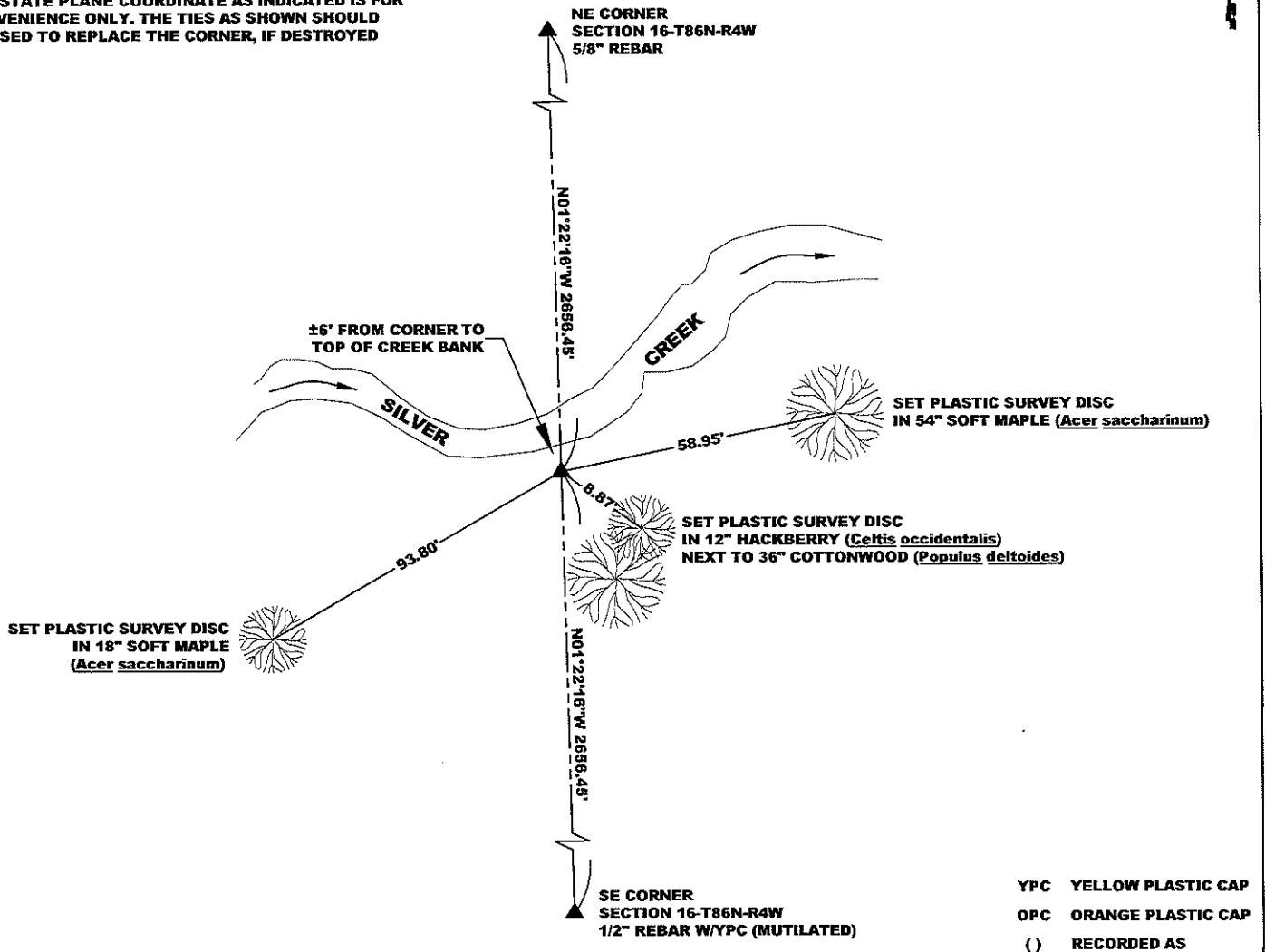
OFFICE FILE NO.

STATE PLANE COORDINATE
 NAD 83 IOWA NORTH
 N 3565488.62
 E 5515089.39

CORNER SECTION TOWNSHIP RANGE
 NE CORNER 16 T86N R4W



NOTE:
 THE STATE PLANE COORDINATE AS INDICATED IS FOR
 CONVENIENCE ONLY. THE TIES AS SHOWN SHOULD
 BE USED TO REPLACE THE CORNER, IF DESTROYED



PREVIOUSLY RECORDED IN RECORDER'S DOCUMENT BOOK 389, PAGE 286
 MONUMENT DESCRIPTION AND HOW ESTABLISHED WERE NOT ABLE TO RECOVER PREVIOUSLY SET CORNER. SET 5/8" REBAR W/ORANGE PLASTIC CAP #11310 ON LINE AND EQUIDISTANT BETWEEN NE CORNER OF SECTION 16-T86N-R4W AND SE CORNER OF SAID SECTION 16. REBAR IS APPROXIMATELY 3" ABOVE PRESENT GROUND SURFACE. SET STEEL FENCE POST W/"SURVEY MARKER" SIGN APPROXIMATELY 6" E-LY OF CORNER TO SERVE AS A WITNESS.
 NOTE: BEARINGS SHOWN ON THIS CERTIFICATE ARE BASED ON JONES COUNTY GPS NETWORK WHICH IN TURN IS BASED ON NAD 83 IOWA NORTH.

FIELD BOOK 377, PAGE 157. DATE OF SURVEY: 1/26/09



I hereby certify that this land surveying document and the related survey work was performed by me or under my direct personal supervision and that I am a duly registered Land Surveyor under the laws of the State of Iowa.
 Signed: *Clarence J. Walton* 2/27/09
 Clarence J. Walton, L.S.
 My Registration Renewal Date is December 31, 2009
 Iowa License Number 11310
 Pages or sheets covered by this seal: 1 of 1.

- A. THERE IS NO CERTIFICATE FOR THE CORNER ON FILE WITH THE RECORDER OF THE COUNTY IN WHICH THE CORNER IS LOCATED.
- B. THE CORNER MONUMENT HAS BEEN REPLACED OR MODIFIED.
- C. THE SURVEYOR IN RESPONSIBLE CHARGE OF THE LAND SURVEYING ACCEPTS A CORNER POSITION THAT DIFFERS FROM THAT SHOWN IN THE PUBLIC RECORDS OF THE COUNTY IN WHICH THE CORNER IS LOCATED.
- D. THE REFERENCE TIES REFERRED TO IN AN EXISTING PUBLIC RECORD NO LONGER EXIST.

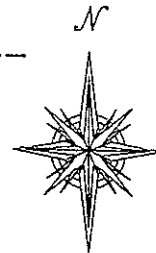
CORNERS TO BE INDEXED			
CORNER	SECTION	TOWNSHIP	RANGE
E 1/4 CORNER	16	86N	4W
W 1/4 CORNER	15	86N	4W

JONES COUNTY ENGINEER'S OFFICE

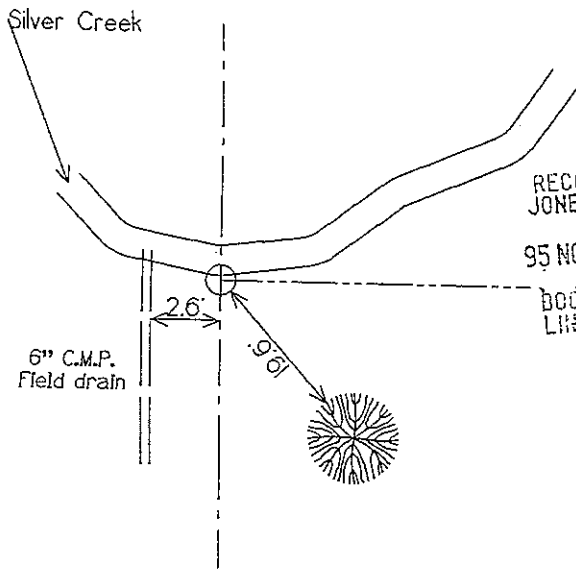
19501 HWY. 64, ANAMOSA, IOWA 52205
 (319) 462-3785

United States Public Land Survey Corner Certificate

Land survey corner in Section 15 Township 86
North, Range 4 West of the 5th Principal Meridian
Jones County, Iowa.



No Scale

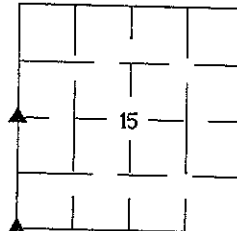


1759

FILED
RECORDERS OFFICE
JONES COUNTY IOWA

95 NOV 29 PM 12: 25

BOOK 389 PAGE 286
LINDA J. BENDIXEN
RECORDER *LJB*

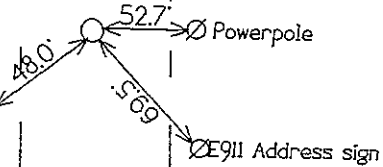


SECTION

W 1/4 Corner
Sec 15-86-4
Set I.P.

Cornerpost

SW Corner
Sec 15-86-4
Set I.P.



Certification

I hereby certify that this plat and survey was made
by me or under my direct supervision and that I am
a duly Registered Land Surveyor under the laws of
the State of Iowa.

Harold E. Dillon 11/29/95

Harold E. Dillon Reg.#6581 date
My certification expires 12/31/96

