

FEEBOOK: 2008 0491

REC FEES: \$7.00

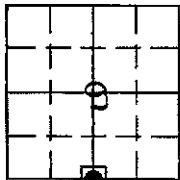
PAGES: 1

2/20/2008 9:56 AM

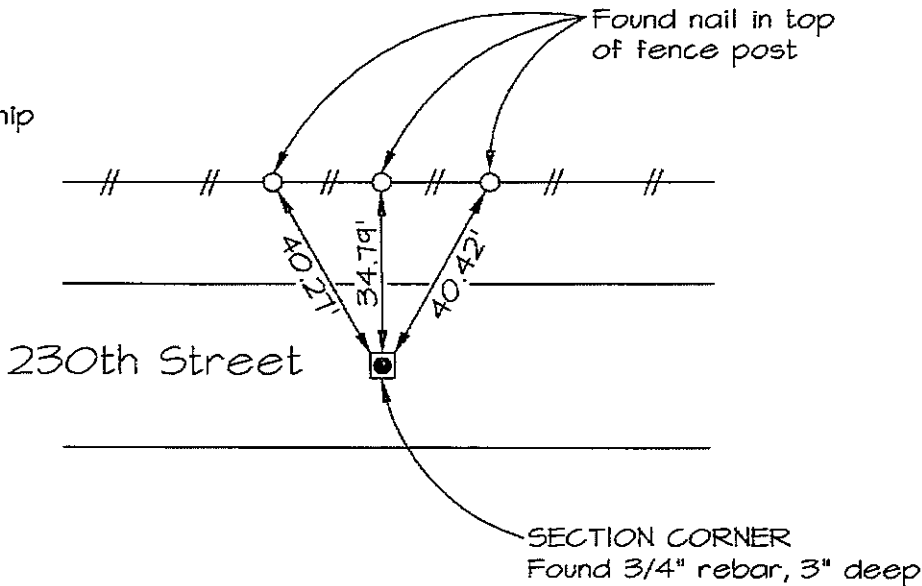
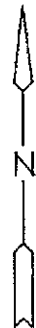
Marie Krutzfield, Recorder
Jones County, Iowa

Prepared by: Richard M. Kordick, P.E., L.S., 120 East Main, Suite D, Anamosa, IA 52205 Phone: (319) 462-4498

U.S. PUBLIC LAND SURVEY CORNER CERTIFICATE



S 1/4 Corner
9-86N-4W
Jones County
CASTLE GROVE Township



Plan-View No Scale

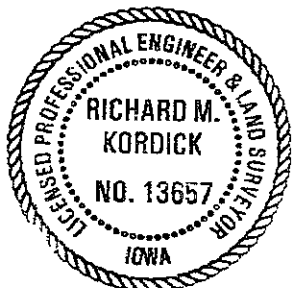
Reason for corner tie:

- A) There is no certificate for the corner on file with the recorder.
- B) Corner position differs from previously recorded certificate recorded in book , page
- C) Corner monument was replaced or modified.
- D) Reference ties in previously recorded certificate recorded in book , page are incorrect or missing.

Research at the recorder's office, auditor's office, and engineer's office revealed the following:
None.

Field search performed was as follows:
Field search was performed with a metal detector and excavation.

Monument found or set:
A 3/4" rebar was found and used as the corner.



I hereby certify that this land surveying document was prepared and the related survey work was performed by me or under my direct personal supervision and that I am a duly licensed Land Surveyor under the laws of the State of Iowa.

Richard M. Kordick 2/8/2008
Richard M. Kordick date
License number 13657
My license renewal date is December 31, 2009.
Pages or sheets covered by this seal: 1 of 1

LEGEND:

- Section Corner as noted
- Power Pole
- Section line
- Centerline
- Existing Fence
- Recorded Dist.

Kordick Surveying & Engineering
120 East Main, Suite D
Anamosa, Iowa 52205
(319) 462-4498

U.S. Public Land
Survey Corner Certificate
Project:
Section 9-T. 86 N.-R. 4 W.

Field BK
07103C
Date
2-8-08
Job No.
07103C
Sheet
1 of 1