

COPY

COPY

FEE BOOK: 2009 0690 2/27/2009 10:55 AM
REC FEES: No Fee
PAGES: 1 Marie Krutzfield, Recorder
Jones County, Iowa

PREPARED BY

CLARENCE J. WALTON, JONES COUNTY ENGINEER'S OFFICE, 19501 HWY. 64, ANAMOSA, IOWA, 52205 (319) 462-3785

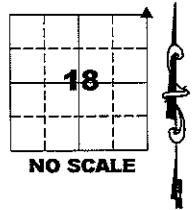
UNITED STATES PUBLIC LAND SURVEY CORNER CERTIFICATE

LAND SURVEY MONUMENTS SITUATED IN SECTION 18, TOWNSHIP 86 NORTH,
RANGE 4 WEST OF THE 5TH PRINCIPAL MERIDIAN, JONES COUNTY, IOWA.

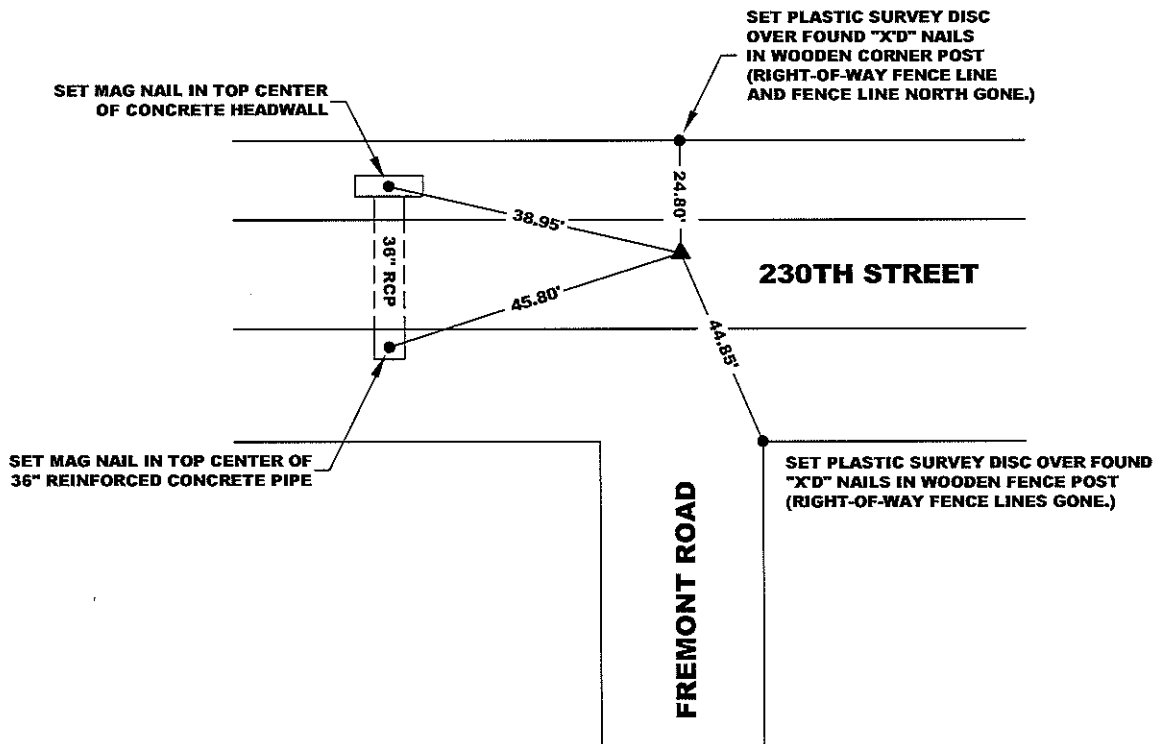
OFFICE FILE NO.

STATE PLANE COORDINATE
NAD 83 IOWA NORTH
N 3567993.35
E 5504354.50

CORNER SECTION TOWNSHIP RANGE
NE CORNER 18 T86N R4W



NOTE:
THE STATE PLANE COORDINATE AS INDICATED IS FOR
CONVENIENCE ONLY. THE TIES AS SHOWN SHOULD BE
USED TO REPLACE THE CORNER, IF DESTROYED



OPC ORANGE PLASTIC CAP
() RECORDED AS

PREVIOUSLY RECORDED IN RECORDER'S DOCUMENT RECORDER'S DOCUMENT No. 1999 3184
MONUMENT DESCRIPTION AND HOW ESTABLISHED FOUND 5/8" REBAR 6" BELOW ROAD SURFACE PER JONES COUNTY ENGINEERING TIES IN
FIELD BOOK 313, PAGE 21. ACCORDING TO TIES AND TO RECOLLECTION OF SURVEY PARTY CHIEF, PAT POWELL, REBAR WAS SET DIRECTLY ON TOP OF
STONE. THIS WAS NOT VERIFIED AT THIS TIME AS FROST IN ROAD PREVENTED SAFE EXCAVATION OF STONE. OLD ROAD RECORDS INDICATE THAT A
"STONE IN MOUND" WAS PRESENT AT TIME WHEN 230TH STREET WAS ORIGINALLY LAID OUT. CORNER IS APPROXIMATELY 7 FEET NORTH OF CENTER OF
TRAVELLED WAY OF 230TH STREET.

FIELD BOOK 377, PAGE 155. DATE OF SURVEY: 2/17/09



I hereby certify that this land surveying document
and the related survey work was performed by me
or under my direct personal supervision and that
I am a duly registered Land Surveyor under the laws
of the State of Iowa.

Signed: *Clarence J. Walton* 2/27/09
Clarence J. Walton, L.S.
My Registration Renewal Date is December 31, 2009
Iowa License Number 11310
Pages or sheets covered by this seal: 1 of 1.

- A. THERE IS NO CERTIFICATE FOR THE CORNER ON FILE WITH THE RECORDER OF THE COUNTY IN WHICH THE CORNER IS LOCATED.
- B. THE CORNER MONUMENT HAS BEEN REPLACED OR MODIFIED.
- C. THE SURVEYOR IN RESPONSIBLE CHARGE OF THE LAND SURVEYING ACCEPTS A CORNER POSITION THAT DIFFERS FROM THAT SHOWN IN THE PUBLIC RECORDS OF THE COUNTY IN WHICH THE CORNER IS LOCATED.
- D. THE REFERENCE TIES REFERRED TO IN AN EXISTING PUBLIC RECORD NO LONGER EXIST.

CORNERS TO BE INDEXED			
CORNER	SECTION	TOWNSHIP	RANGE
NE	18	86N	4W
SW	8	86N	4W
NW	17	86N	4W
SE	7	86N	4W

JONES COUNTY ENGINEER'S OFFICE



19501 HWY. 64, ANAMOSA, IOWA 52205
(319) 462-3785

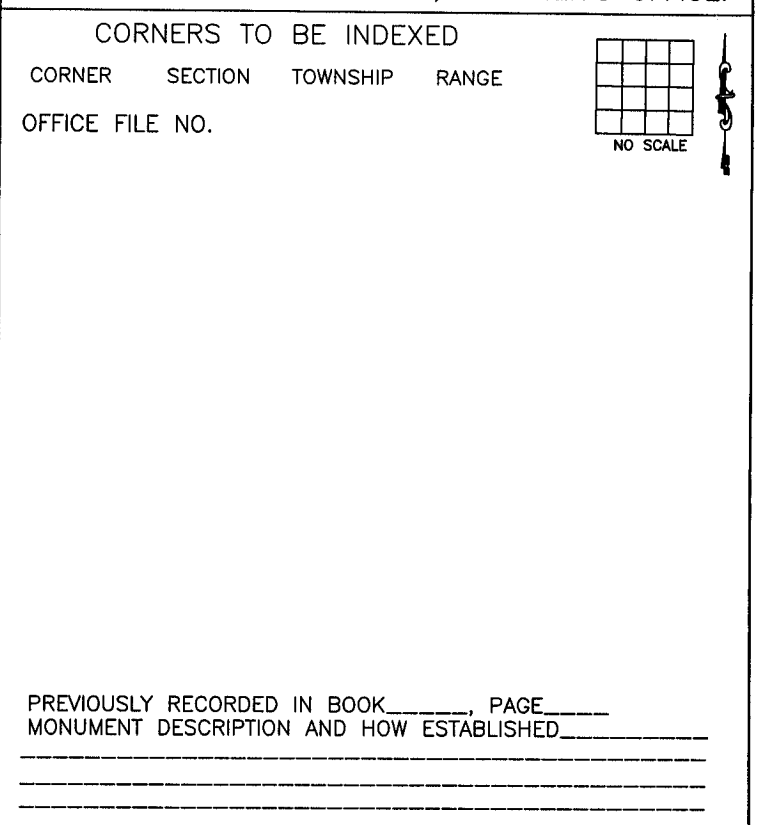
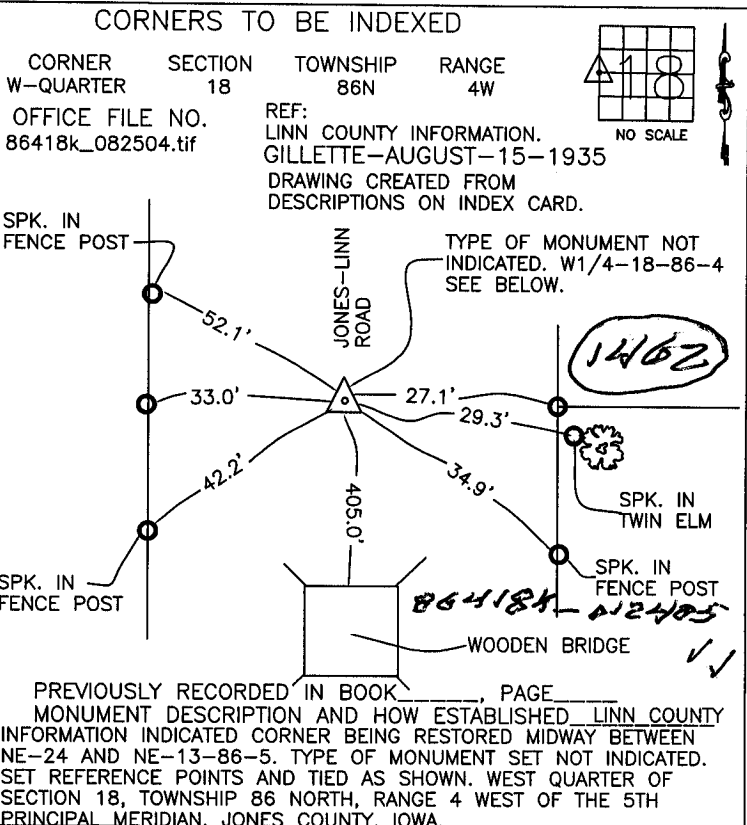
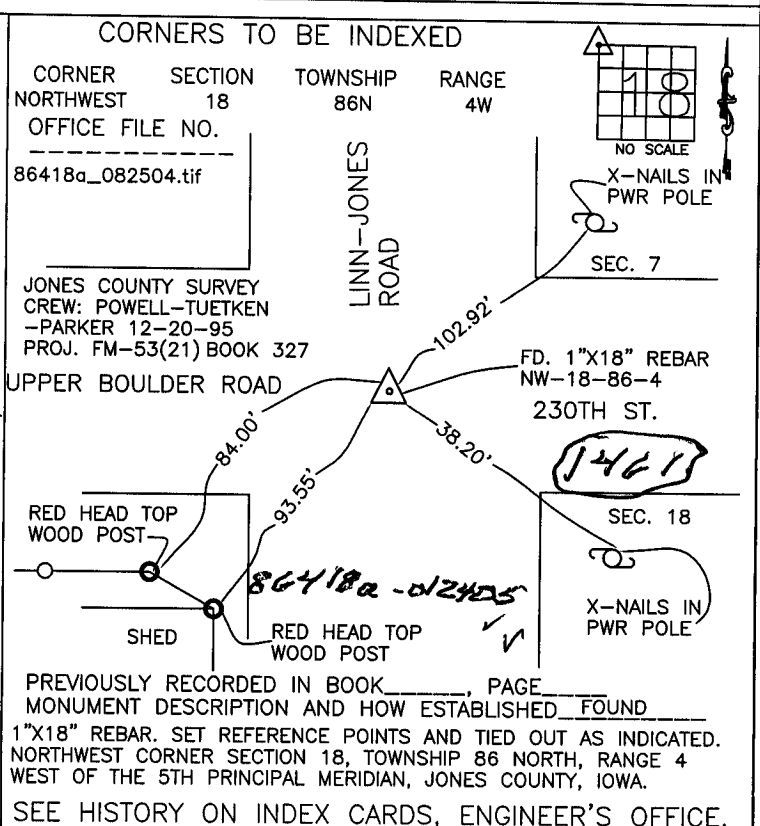
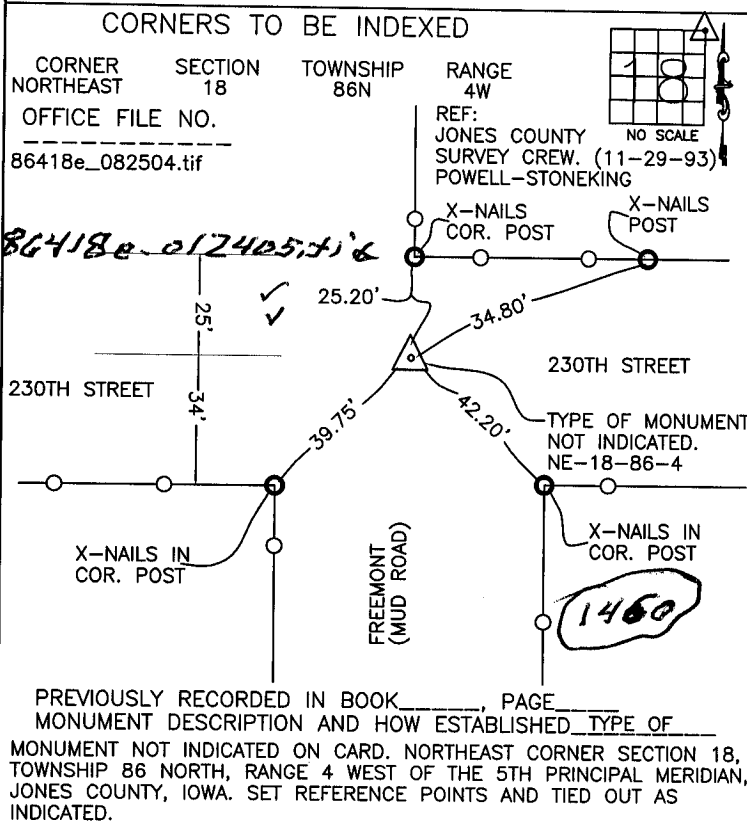
THIS IS NOT A CERTIFICATION

F

JONES COUNTY ENGINEER'S OFFICE, 19501 HWY. 64, ANAMOSA, IOWA, 52205 (319)462-3785

UNITED STATES PUBLIC LAND SURVEY CORNER CERTIFICATE

LAND SURVEY MONUMENTS SITUATED IN SECTION 18, TOWNSHIP 86 NORTH, RANGE 4 WEST OF THE 5TH P.M., JONES COUNTY, IOWA



~~I hereby declare that this plat, survey or report was made by me or under my direct personal supervision and that I am a duly registered Land Surveyor under the laws of the State of Iowa.~~

Signed: _____

SEAL

JONES COUNTY ENGINEER'S OFFICE

19501 HWY. 64,
 ANAMOSA, IOWA,
 52205 (319)462-3785