

# UNITED STATES PUBLIC LAND SURVEY CORNER CERTIFICATE

OF

Land Survey Monuments situated in Section 18, Township 86 N, Range 4 W, of the Fifth Principal Meridian, Jones County, Iowa. Previously recorded in N/A in County Recorder's Office.

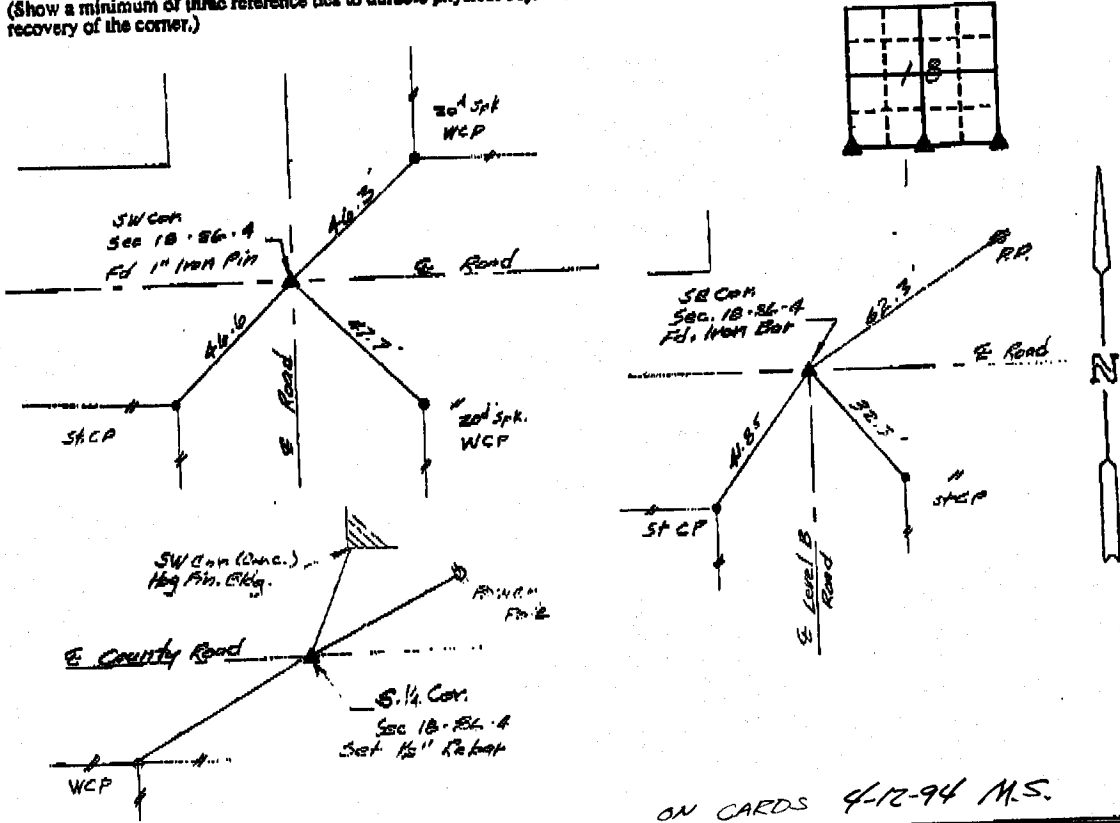
(Show reason for preparing this certificate, the evidence and detailed procedures used in establishing the corner positions and monumentation found or placed.)

Monument Description and Remarks: No corner tie certificates currently on file.

- SW Corner Sec 18 - Dug Ed 1" Iron Pin 2-3" deep (Retied)
- SE Corner Sec 18 - Dug Ed. 1/2" x 1" Iron Bar 5" long 15" deep.
- S. 1/4 Corner Sec 18 - Set 1/2" Rebar @ rd ROW and proportionate E-W

### PLAN - VIEW

(Show a minimum of three reference ties to durable physical objects, relevant monuments and physical conditions that will enable recovery of the corner.)



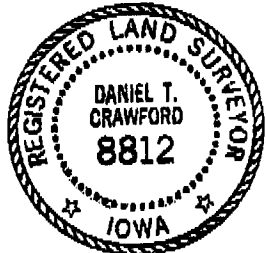
ON CARDS 4-12-94 M.S.

I hereby certify that the survey work was completed and this certificate was prepared by me or under my direct personal supervision and that I am a duly registered land surveyor under the laws of the state of Iowa.

Signature: Daniel T. Crawford  
Name typed or printed: Daniel T. Crawford, R.L.S.

Date: Jan 27, 1994 Reg. No. 8812

SEAL



Corners	List Corners to be Indexed		
	Section	Twp	Range
SW	18	86 N	4 W
SE	18	86 N	4 W
S 1/4	18	86 N	4 W