

Jones County Marie Krutzfield Recorder
 Fee Book 2012 0329
 02/08/2012 @0946AM # Pages 1
 ZSC SEC COR CERT
 Total Fees: \$7.00

TeKIPPE ENGINEERING, P.C., 1919 210th Street, P.O. Box 357, Manchester, Iowa 52057 Phone (563) 927-2060

UNITED STATES PUBLIC LAND SURVEY CORNER CERTIFICATE

OF

Land Survey Monuments situated in Section 1, Township 86 North, Range 4 West of the Fifth Principal Meridian, Jones County, Iowa.

Previously recorded in (1) Bk. 2004, Pg. 983 (2) Bk. 418, Pg. 248 in County Recorder's Office.
(book, page, document number, etc.)

(Show reason for preparing this certificate, the evidence and detailed procedures used in establishing the corner positions and monumentation found or placed.)

Monument Description and Remarks: (1) NE Corner of Section 1-T86N-R4W: Found 1/2" Rebar w/Red Plastic Cap number was illegible. Retied because all of the existing ties have been destroyed.

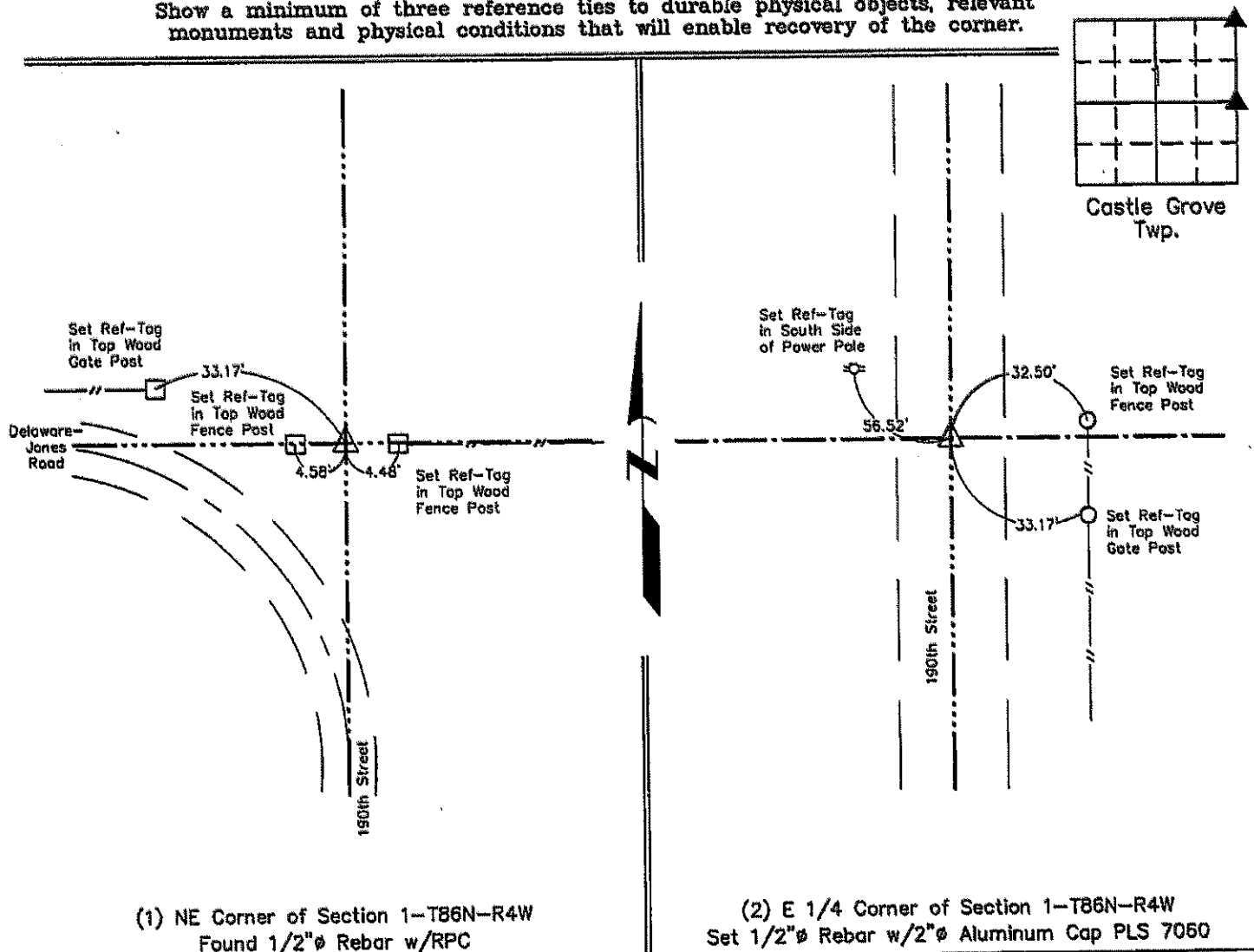
(2) E 1/4 Corner of Section 1-T86N-R4W: Set 1/2" rebar w/2" Alum Cap PLS 7060 based upon existing ties.

PLAN VIEW

Project Number 122005LS

Field Book: Jones / Monticello No. 2, Pages 38-39

Show a minimum of three reference ties to durable physical objects, relevant monuments and physical conditions that will enable recovery of the corner.



(1) NE Corner of Section 1-T86N-R4W
 Found 1/2" Rebar w/RPC

(2) E 1/4 Corner of Section 1-T86N-R4W
 Set 1/2" Rebar w/2" Aluminum Cap PLS 7060

	I hereby certify that this land surveying document was prepared and the related survey work was performed by me or under my direct personal supervision and that I am a duly licensed Land Surveyor under the laws of the State of Iowa.	List Corners to be Indexed											
	<p style="text-align: right;"> <i>Lyle G. TeKippe</i> 2-7-12 Date Lyle G. TeKippe, P.E. & P.L.S. License Number 7060 My license renewal date is December 31, 2012. Sheets covered by this seal: This sheet only </p>	<table border="1" style="width: 100%; border-collapse: collapse;"> <thead> <tr> <th style="text-align: left;">Corners</th> <th style="text-align: left;">Section</th> <th style="text-align: left;">Twp.</th> <th style="text-align: left;">Range</th> </tr> </thead> <tbody> <tr> <td>NE</td> <td>1</td> <td>86N</td> <td>4W</td> </tr> <tr> <td>E 1/4</td> <td>1</td> <td>86N</td> <td>4W</td> </tr> </tbody> </table>	Corners	Section	Twp.	Range	NE	1	86N	4W	E 1/4	1	86N
Corners	Section	Twp.	Range										
NE	1	86N	4W										
E 1/4	1	86N	4W										

2526

FILED
RECORDERS OFFICE
JONES COUNTY IOWA

97 FEB 20 AM 10:24

BOOK 418 PAGE 248
LINDA J. BENDIXEN
RECORDER

Prepared by Wm. Burger Land Surveyors 510 3rd Street West Court, Worthington, Iowa Phone 319 - 855 2028

UNITED STATES PUBLIC LAND SURVEY CORNER CERTIFICATE

Land Survey Monuments situated in Section 6, Township 85N, Range 3W, of the Fifth Principal Meridian, Dubuque County, Iowa. Previously recorded in NA in County Recorder's Office.

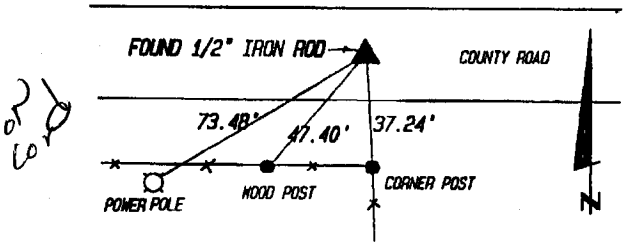
Monument Description and Remarks: (No Corner Certificates found at the County Recorders Office)

- NE CORNER FOUND 1/2" IRON ROD
- WEST 1/4 CORNER FOUND 1/2" IRON ROD
- SW CORNER SE 1/4 NW 1/4 1/4 SET 1/2" IRON ROD W/RLS CAP #12642 AT A PROPORTIONATE DISTANCE FROM THE SE CORNER SE 1/4 OF THE NW FRAC. 1/4 ON LINE WITH WEST 1/4 CORNER AND CENTER OF SECTION
- NW CORNER SE 1/4 NW 1/4 1/4 SET 1/2" IRON ROD W/RLS CAP #12642
- RUN STRAIGHT LINES TO OPPOSITE 1/4 1/4 CORNERS OF THE NW FRACTIONAL 1/4

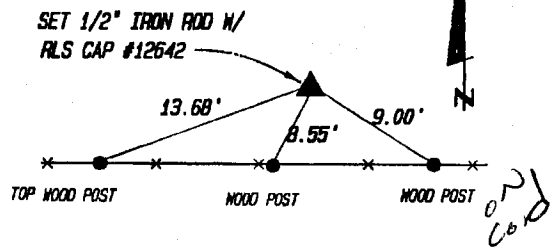
SET NAIL W/WITNESS CAP AT ALL TIE POINTS

PLAN VIEW

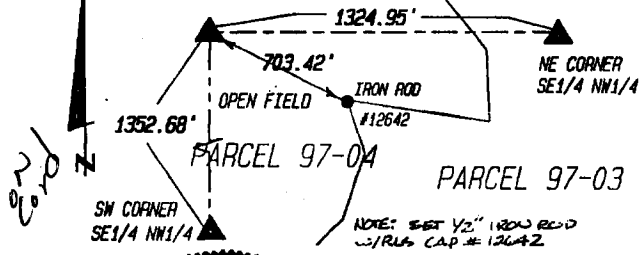
NE CORNER



SW CORNER SE 1/4 NW 1/4

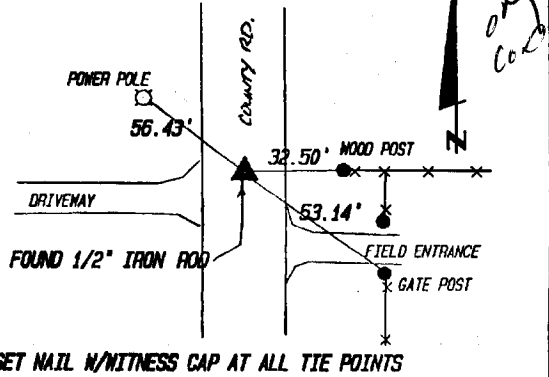


NW CORNER SE 1/4 NW 1/4

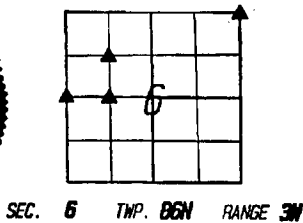
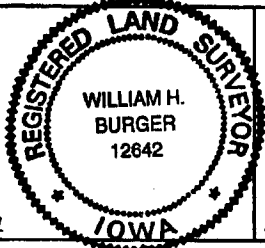


SET NAIL W/ WITNESS CAP AT ALL TIE POINTS

WEST 1/4 CORNER



SET NAIL W/WITNESS CAP AT ALL TIE POINTS



I hereby certify that this land surveying document was prepared and related survey work was performed by me or under my direct personal supervision and that I am a duly licensed Land Surveyor under the laws of the State of Iowa.

William H. Burger 2/18/97
William H. Burger Date

License number 12642

My license renewal date is December 31, 1998

Pages or Sheets covered by this seal: Sheet 1 of 1

CORNERS TO BE INDEXED

Corner

- N 1/4 Section 6 Twp 85N Range 3W
- NE Section 6 Twp 85N Range 3W
- SW SE 1/4 NW 1/4 Section 6 Twp 85N Range 3W
- NW SE 1/4 NW 1/4 Section 6 Twp 85N Range 3W

864010-021897
86306e-021897
86306g-021897
86306i-021897