

Jones County Marie Krutzfield Recorder
 Fee Book 2012 0330
 02/08/2012 @0948AM # Pages 1
 ZSC SEC COR CERT
 Total Fees: \$7.00

TEKIPPE ENGINEERING, P.C., 1919 210th Street, P.O. Box 357, Manchester, Iowa 52057 Phone (563) 927-2060

UNITED STATES PUBLIC LAND SURVEY CORNER CERTIFICATE
OF

Land Survey Monuments situated in Section 1, Township 86 North, Range 4 West of the Fifth Principal Meridian, Jones County, Iowa.
 Previously recorded in (1) None in County Recorder's Office.
(book, page, document number, etc.)

(Show reason for preparing this certificate, the evidence and detailed procedures used in establishing the corner positions and monumentation found or placed.)

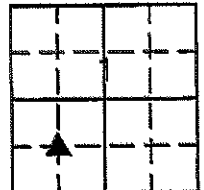
Monument Description and Remarks: (1) SW Corner of the NE 1/4-SW 1/4 of Section 1-T86N-R4W:
 Found Stone based on information from a Plat recorded in Surveyors Record Book 1 on December 26, 1867, by H. D. Smith, on file at the Jones County Recorder's office.

PLAN VIEW

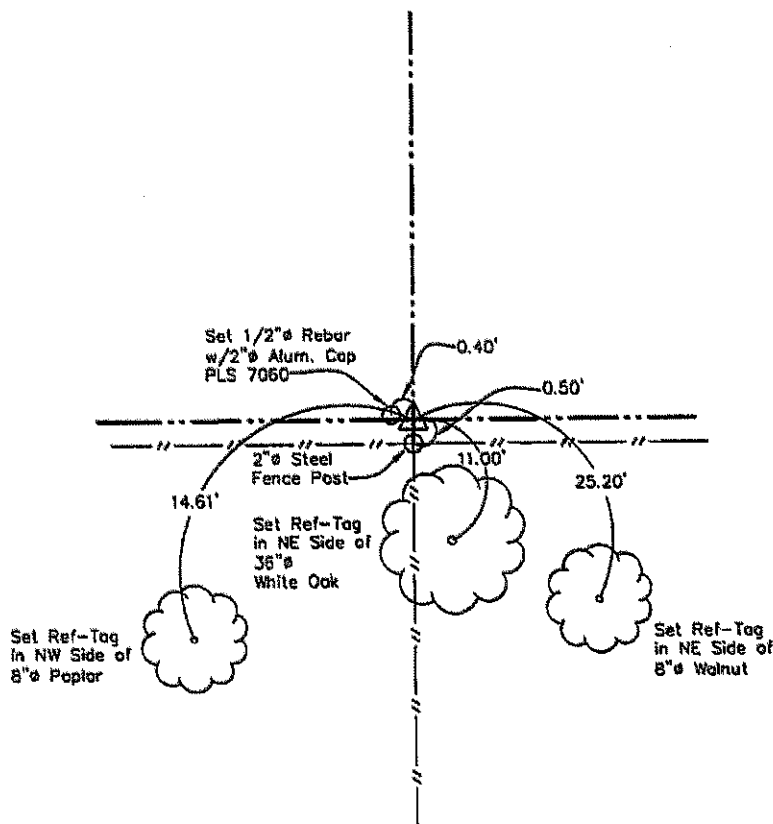
Project Number 122005LS

Field Book: Jones / Monticello No. 2, Pages 38-39

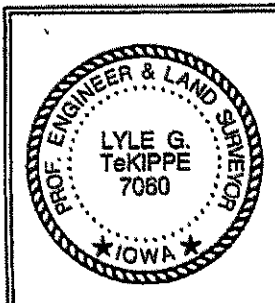
Show a minimum of three reference ties to durable physical objects, relevant monuments and physical conditions that will enable recovery of the corner.



Castle Grove Twp.



(1) SW Corner of the NE 1/4-SW 1/4 Section 1-T86N-R4W
 Set 1/2" Rebar w/2" Aluminum Cap PLS 7060



I hereby certify that this land surveying document was prepared and the related survey was performed by me or under my direct personal supervision and that I am a duly licensed Land Surveyor under the laws of the State of Iowa.

Lyle G. Tekippe 2-7-12
 Lyle G. Tekippe, P.E. & P.L.S. Date
 License Number 7060
 My license renewal date is December 31, 2012.
 Sheets covered by this seal: This Sheet Only

List Corners to be Indexed

Corners	Section	Twp.	Range
SW-NE-SW	1	86N	4W