

Jones County Marie Krutzfield Recorder  
 Fee Book 2012 0331  
 02/08/2012 @0950AM # Pages 1  
 ZSC SEC COR CERT  
 Total Fees: \$7.00

TEKIPPE ENGINEERING, P.C., 1919 210th Street, P.O. Box 357, Manchester, Iowa 52057 Phone (563) 927-2060

## UNITED STATES PUBLIC LAND SURVEY CORNER CERTIFICATE

OF

Land Survey Monuments situated in Section 1, Township 86 North, Range 4 West of the Fifth Principal Meridian, Jones County, Iowa.

Previously recorded in (1) None (2) None in County Recorder's Office.  
(book, page, document number, etc.)

(Show reason for preparing this certificate, the evidence and detailed procedures used in establishing the corner positions and monumentation found or placed.)

**Monument Description and Remarks:** (1) SE Corner of the NE 1/4-SE 1/4 of Section 1-T86N-R4W:  
 Found 1/2" Rebar. No ties currently on file.

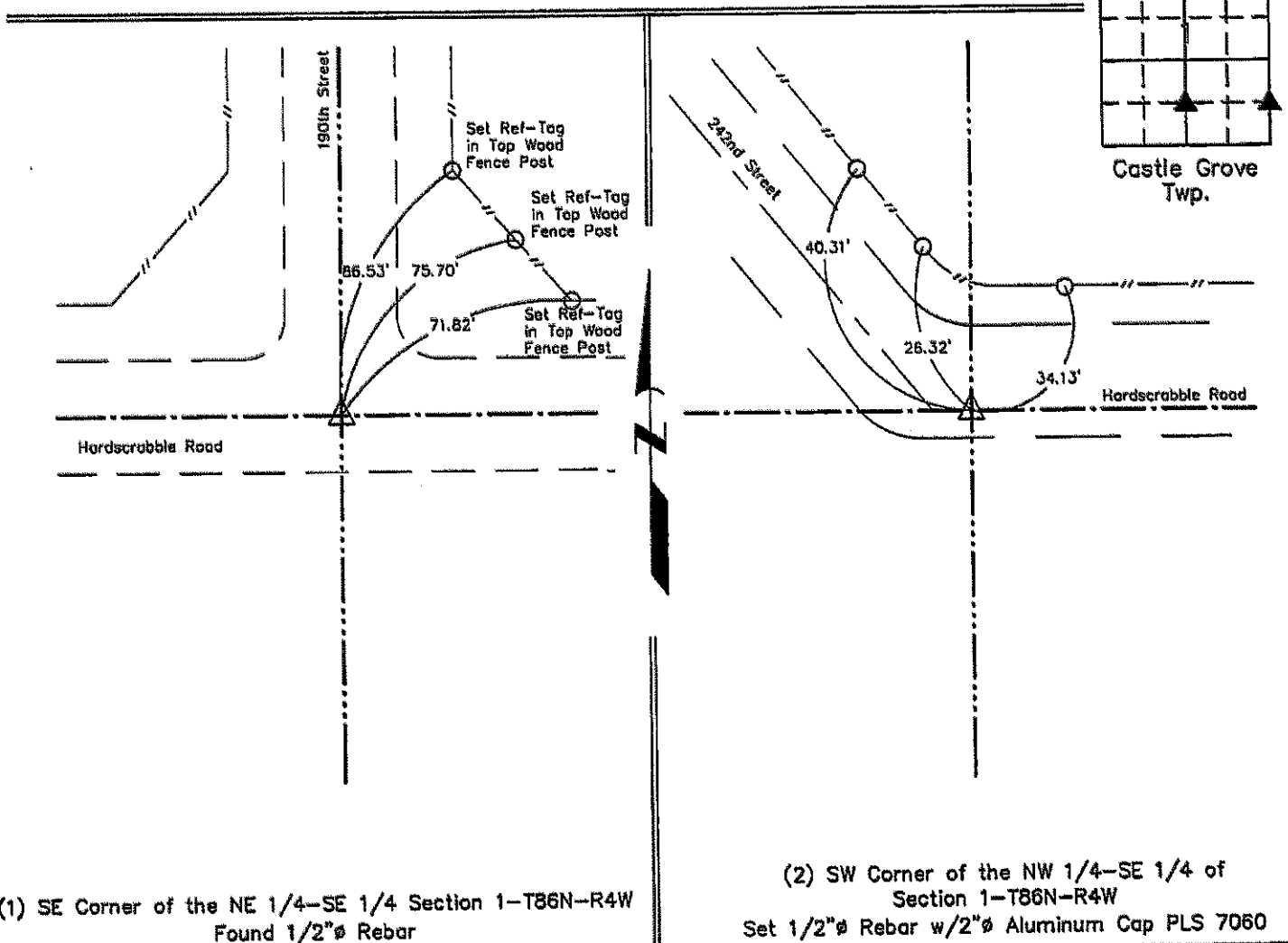
(2) SW Corner of the NW 1/4-SE 1/4 of Section 1-T86N-R4W: Set 1/2" rebar w/2" Alum Cap PLS 7060 at existing 1/2" rebar location.

### PLAN VIEW

Project Number 122005LS

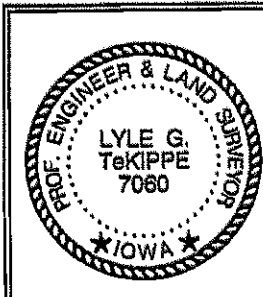
Field Book: Jones / Monticello No. 2, Pages 38-39

Show a minimum of three reference ties to durable physical objects, relevant monuments and physical conditions that will enable recovery of the corner.



(1) SE Corner of the NE 1/4-SE 1/4 Section 1-T86N-R4W  
 Found 1/2" Rebar

(2) SW Corner of the NW 1/4-SE 1/4 of Section 1-T86N-R4W  
 Set 1/2" Rebar w/2" Aluminum Cap PLS 7060



I hereby certify that this land surveying document was prepared and the related survey work was performed by me or under my direct personal supervision and that I am a duly licensed Land Surveyor under the laws of the State of Iowa.

*Lyle G. TeKippe* 2-7-12  
 Lyle G. TeKippe, P.E. & P.L.S. Date  
 License Number 7060  
 My license renewal date is December 31, 2012.  
 Sheets covered by this seal: This Sheet Only

#### List Corners to be Indexed

Corners	Section	Twp.	Range
SE-NE-SE	1	86N	4W
SW-NW-SE	1	86N	4W