

FEE BOOK: 2009 0931 3/17/2009 9:04 AM
 REC FEES: No Fee
 PAGES: 1 Marie Krutzfield, Recorder
 Jones County, Iowa

PREPARED BY

CLARENCE J. WALTON, JONES COUNTY ENGINEER'S OFFICE, 19501 HWY. 64, ANAMOSA, IOWA, 52205 (319) 462-3785

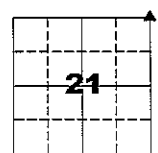
UNITED STATES PUBLIC LAND SURVEY CORNER CERTIFICATE

LAND SURVEY MONUMENTS SITUATED IN SECTION 21, TOWNSHIP 86 NORTH,
 RANGE 4 WEST OF THE 5TH PRINCIPAL MERIDIAN, JONES COUNTY, IOWA.

OFFICE FILE NO.

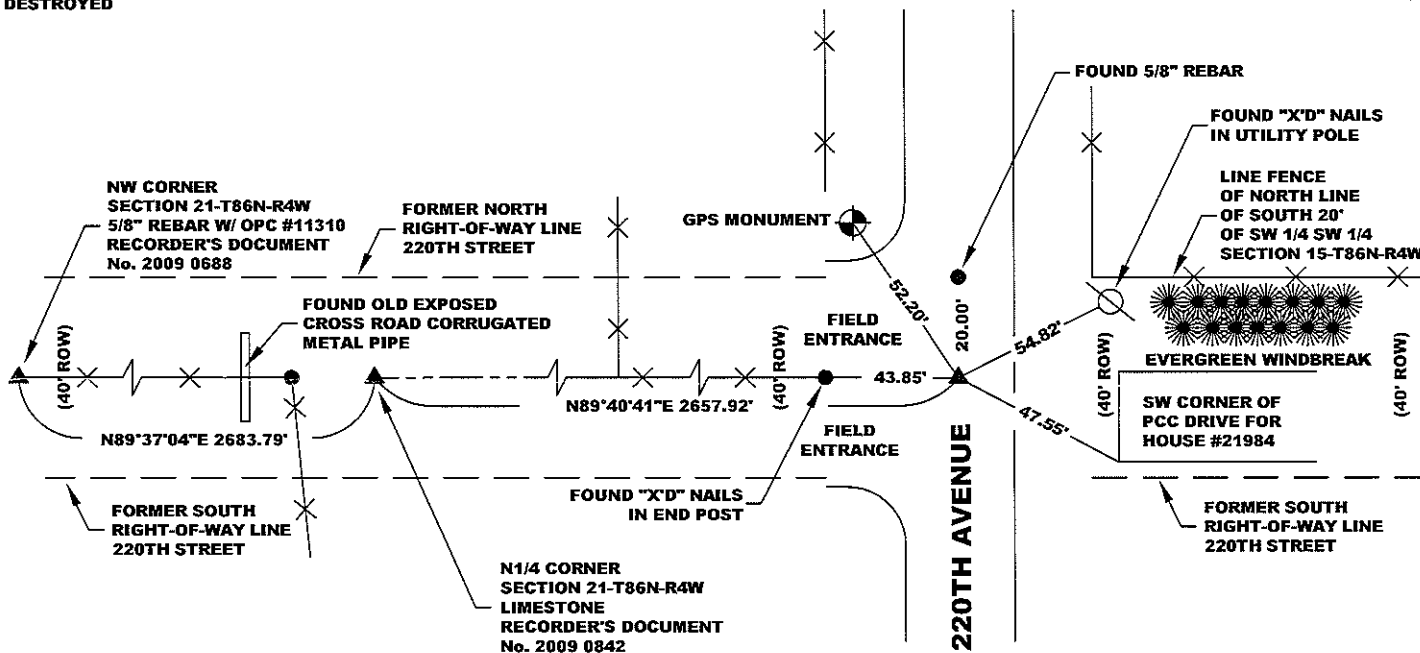
STATE PLANE COORDINATE
 NAD 83 IOWA NORTH
 N 3562832.93
 E 5515152.95

CORNER SECTION TOWNSHIP RANGE
 NE CORNER 21 T86N R4W



NO SCALE

NOTE:
 THE STATE PLANE COORDINATE AS INDICATED IS FOR CONVENIENCE ONLY.
 THE TIES AS SHOWN SHOULD BE USED TO REPLACE THE CORNER, IF
 DESTROYED

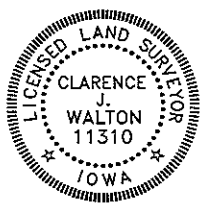


YPC YELLOW PLASTIC CAP
 OPC ORANGE PLASTIC CAP
 ROW RIGHT-OF-WAY
 () OF RECORD

PREVIOUSLY RECORDED IN RECORDER'S DOCUMENT 2009 0689

MONUMENT DESCRIPTION AND HOW ESTABLISHED FOUND 1/2\"/>

FIELD BOOK 377, PAGE 153. DATE OF SURVEY: 3/05/09



I hereby certify that this land surveying document and the related survey work was performed by me or under my direct personal supervision and that I am a duly registered Land Surveyor under the laws of the State of Iowa.
 Signed: *Clarence J. Walton* 3/17/09
 Clarence J. Walton, L.S.
 My Registration Renewal Date is December 31, 2009
 Iowa License Number 11310
 Pages or sheets covered by this seal: 1 of 1.

- A. THERE IS NO CERTIFICATE FOR THE CORNER ON FILE WITH THE RECORDER OF THE COUNTY IN WHICH THE CORNER IS LOCATED.
- B. THE CORNER MONUMENT HAS BEEN REPLACED OR MODIFIED.
- C. THE SURVEYOR IN RESPONSIBLE CHARGE OF THE LAND SURVEYING ACCEPTS A CORNER POSITION THAT DIFFERS FROM THAT SHOWN IN THE PUBLIC RECORDS OF THE COUNTY IN WHICH THE CORNER IS LOCATED.
- D. THE REFERENCE TIES REFERRED TO IN AN EXISTING PUBLIC RECORD NO LONGER EXIST.
- E. THE REFERENCE TIES WERE UPDATED WITH THIS CORNER CERTIFICATE.

CORNERS TO BE INDEXED

CORNER	SECTION	TOWNSHIP	RANGE
NE	21	86N	4W
SW	15	86N	4W
NW	22	86N	4W
SE	16	86N	4W

JONES COUNTY ENGINEER'S OFFICE



19501 HWY. 64, ANAMOSA, IOWA 52205
 (319) 462-3785

COPY

FEE BOOK: 2009 0689 2/27/2009 10:53 AM
 REC FEES: No Fee
 PAGES: 1 Marie Krutzfield, Recorder
 Jones County, Iowa

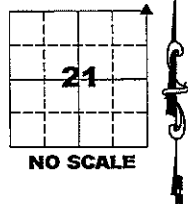
PREPARED BY
 CLARENCE J. WALTON, JONES COUNTY ENGINEER'S OFFICE, 19501 HWY. 64, ANAMOSA, IOWA, 52205 (319) 462-3785

UNITED STATES PUBLIC LAND
 SURVEY CORNER CERTIFICATE
 LAND SURVEY MONUMENTS SITUATED IN SECTION 21, TOWNSHIP 86 NORTH,
 RANGE 4 WEST OF THE 5TH PRINCIPAL MERIDIAN, JONES COUNTY, IOWA.

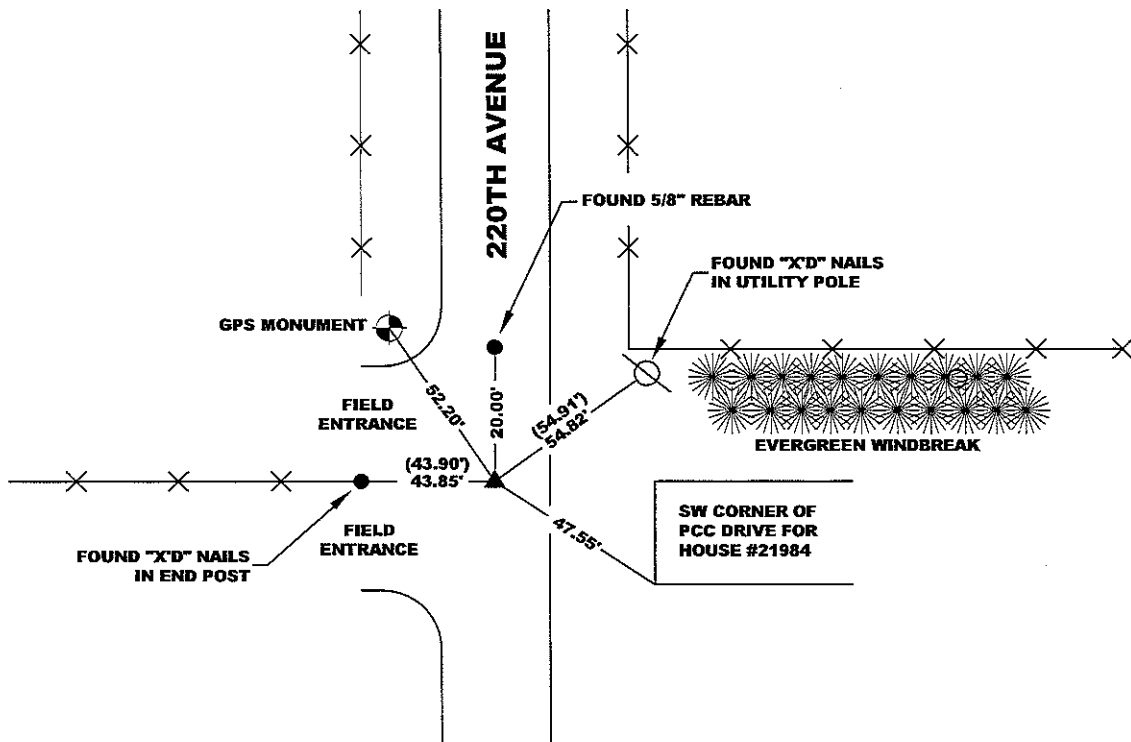
OFFICE FILE NO.

STATE PLANE COORDINATE
 NAD 83 IOWA NORTH
 N 3562832.93
 E 5515152.95

CORNER SECTION TOWNSHIP RANGE
 NE CORNER 21 T86N R4W



NOTE:
 THE STATE PLANE COORDINATE AS INDICATED IS FOR CONVENIENCE ONLY.
 THE TIES AS SHOWN SHOULD BE USED TO REPLACE THE CORNER, IF
 DESTROYED

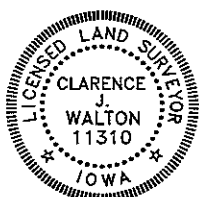


OPC ORANGE PLASTIC CAP
 () RECORDED AS

PREVIOUSLY RECORDED IN RECORDER'S DOCUMENT BOOK 426, PAGE 25.

MONUMENT DESCRIPTION AND HOW ESTABLISHED FOUND 1/2" REBAR W/ MUTILATED YELLOW PLASTIC CAP, 2" BELOW PRESENT ROAD SURFACE.

FIELD BOOK 377, PAGE 153. DATE OF SURVEY: 2/17/09



I hereby certify that this land surveying document and the related survey work was performed by me or under my direct personal supervision and that I am a duly registered Land Surveyor under the laws of the State of Iowa.

Signed: *Clarence J. Walton* 2/27/09
 Clarence J. Walton, L.S.
 My Registration Renewal Date is December 31, 2009
 Iowa License Number 11310
 Pages or sheets covered by this seal: 1 of 1.

- A. THERE IS NO CERTIFICATE FOR THE CORNER ON FILE WITH THE RECORDER OF THE COUNTY IN WHICH THE CORNER IS LOCATED.
- B. THE CORNER MONUMENT HAS BEEN REPLACED OR MODIFIED.
- C. THE SURVEYOR IN RESPONSIBLE CHARGE OF THE LAND SURVEYING ACCEPTS A CORNER POSITION THAT DIFFERS FROM THAT SHOWN IN THE PUBLIC RECORDS OF THE COUNTY IN WHICH THE CORNER IS LOCATED.
- D. THE REFERENCE TIES REFERRED TO IN AN EXISTING PUBLIC RECORD NO LONGER EXST.
- E. THE REFERENCE TIES WERE UPDATED WITH THIS CORNER CERTIFICATE.

CORNERS TO BE INDEXED

CORNER	SECTION	TOWNSHIP	RANGE
NE	21	86N	4W
SW	15	86N	4W
NW	22	86N	4W
SE	16	86N	4W

JONES COUNTY ENGINEER'S OFFICE



19501 HWY. 64, ANAMOSA, IOWA 52205
 (319) 462-3785

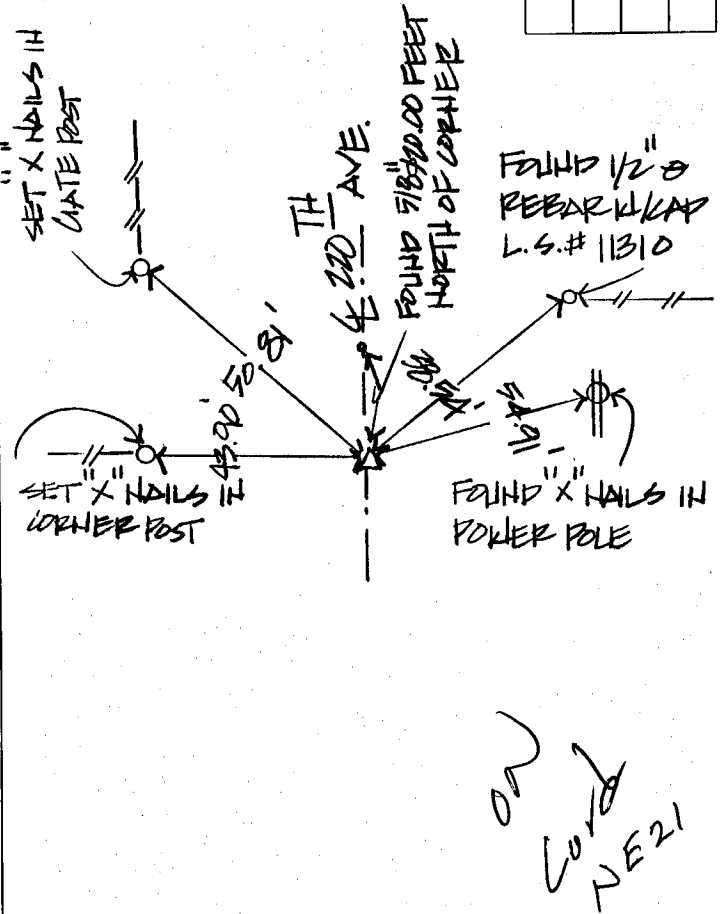
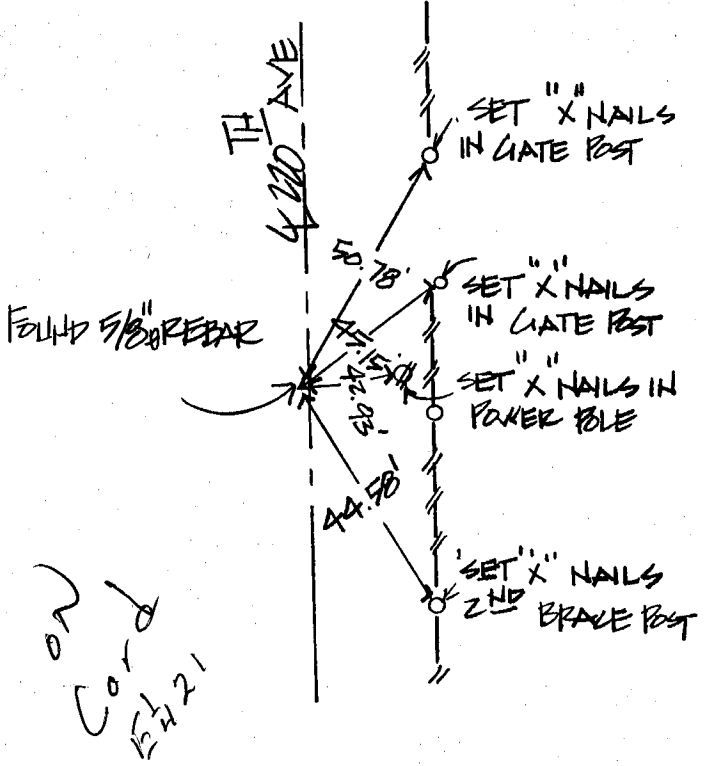
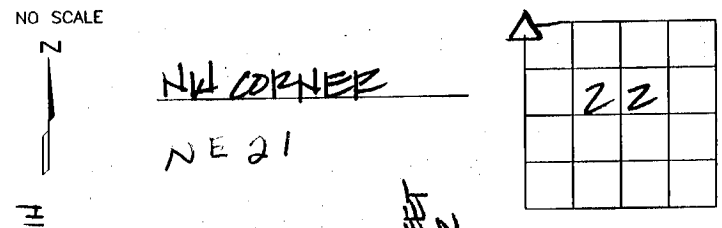
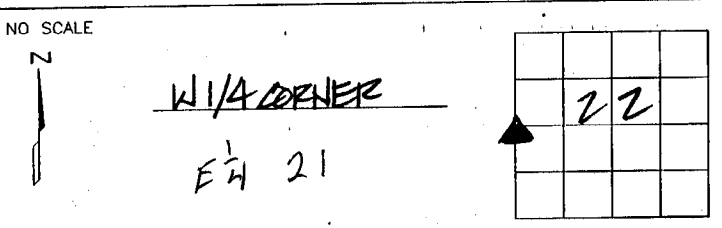
#3746
 FILED
 RECORDERS OFFICE
 JONES COUNTY IOWA
 97 MAY 30 AM 10:36
 BOOK 426 PAGE 25
 LINDA J. BENDIXEN
 RECORDER 6.00/pt

BRAIN ENGINEERING, INC., 777 10TH STREET, MARION, IOWA 52302 PH. (319) 373-1318

UNITED STATES PUBLIC LAND SURVEY CORNER CERTIFICATE

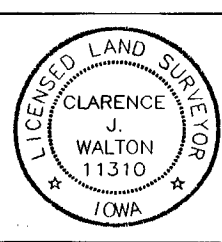
Costly Group

LAND SURVEY MONUMENTS SITUATED IN SECTION 22, TOWNSHIP 86 NORTH RANGE 4 WEST OF THE 5TH P.M., JONES COUNTY, IOWA.



PREVIOUSLY RECORDED IN BOOK _____ PAGE _____
 MONUMENT DESCRIPTION AND HOW ESTABLISHED FOUND 5/8\"/>

PREVIOUSLY RECORDED IN BOOK _____ PAGE _____
 MONUMENT DESCRIPTION AND HOW ESTABLISHED SET 1/2\"/>



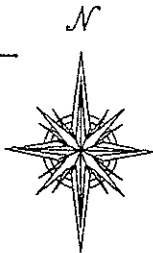
I hereby certify that this land surveying document and the related survey work was performed by me or under my direct personal supervision and that I am a duly licensed Land Surveyor under the laws of the State of Iowa.
 Signed Clarence J. Walton Date 5/29/97
 Clarence J. Walton, L.S.
 My License Renewal Date Is December 31, 1997
 License Number 11310
 Pages or sheets covered by this seal: 1 of 1

CORNER	SECTION	TOWNSHIP	RANGE
NW	22	86	4
W 1/4	22	86	4

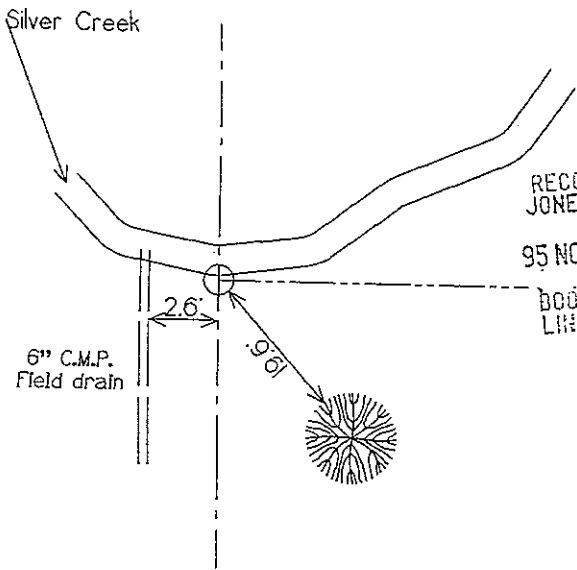
BRAIN ENGINEERING, INC.
 777 10TH STREET
 MARION, IOWA 52302
 (319) 373-1318

United States Public Land Survey Corner Certificate

Land survey corner in Section 15 Township 86
North, Range 4 West of the 5th Principal Meridian
Jones County, Iowa.



No Scale

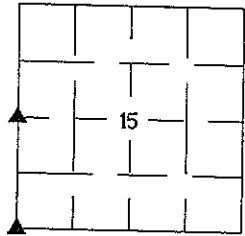


1759

FILED
RECORDERS OFFICE
JONES COUNTY IOWA

95 NOV 29 PM 12: 25

BOOK 389 PAGE 286
LINDA J. BENDIXEN
RECORDER *LJB*

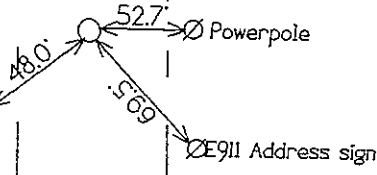


SECTION

W 1/4 Corner
Sec 15-86-4
Set I.P.

Cornerpost

SW Corner
Sec 15-86-4
Set I.P.



Certification

I hereby certify that this plat and survey was made
by me or under my direct supervision and that I am
a duly Registered Land Surveyor under the laws of
the State of Iowa.

Harold E. Dillon 11/29/95

Harold E. Dillon Reg.#6581 date
My certification expires 12/31/96

