

THIS IS NOT A CERTIFICATION

M

JONES COUNTY ENGINEER'S OFFICE, 19501 HWY. 64, ANAMOSA, IOWA, 52205 (319)462-3785

UNITED STATES PUBLIC LAND SURVEY CORNER CERTIFICATE

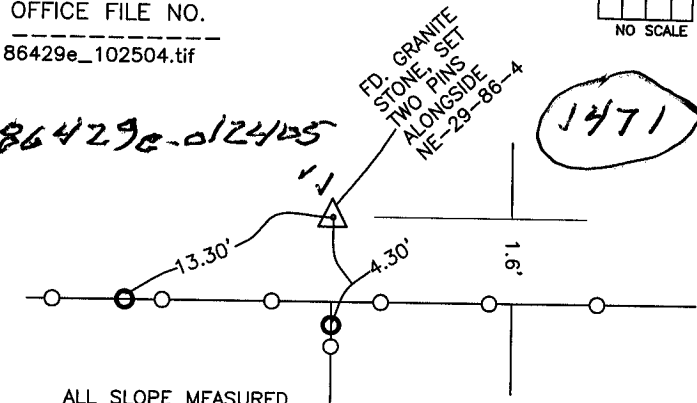
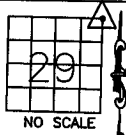
LAND SURVEY MONUMENTS SITUATED IN SECTION 29, TOWNSHIP 86
NORTH, RANGE 4 WEST OF THE 5TH P.M., JONES COUNTY, IOWA

CORNERS TO BE INDEXED

CORNER SECTION TOWNSHIP RANGE
NORTHEAST 29 86N 4W

OFFICE FILE NO.

86429e_102504.tif



ALL SLOPE MEASURED.

REF:
JONES COUNTY SURVEY CREW
POSTEL-WOOD-BARTLE-POWELL
11-20-79
JONES COUNTY BOOK 283, PAGE 6

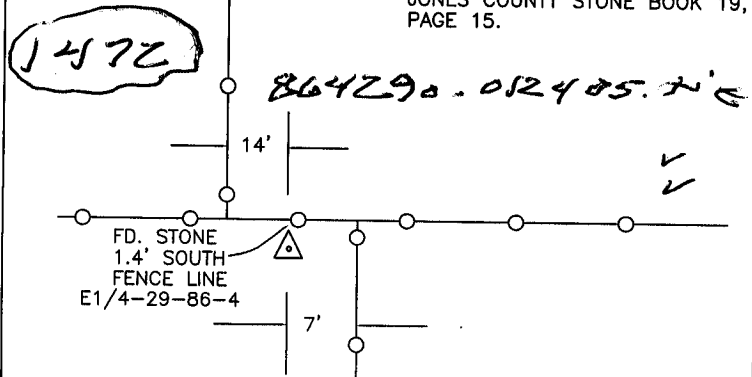
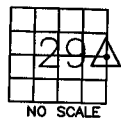
PREVIOUSLY RECORDED IN BOOK _____, PAGE _____
MONUMENT DESCRIPTION AND HOW ESTABLISHED FOUND GRANITE
STONE 6" BELOW SURFACE ON FENCE SOUTH, 1.6' NORTH OF EAST-
WEST FENCE. SET TWO 1/2"X22" REBAR ALONGSIDE STONE. NORTHEAST
CORNER SECTION 29, TOWNSHIP 86 NORTH, RANGE 4 WEST OF THE
5TH PM, JONES COUNTY, IOWA.

CORNERS TO BE INDEXED

CORNER SECTION TOWNSHIP RANGE
E-QUARTER 29 86N 4W

OFFICE FILE NO.

86429o_102504.tif



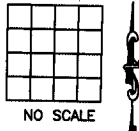
REF:
JONES COUNTY SURVEY CREW:
NORTHROP-WOOD-POSTEL-LYON
JONES COUNTY STONE BOOK 19,
PAGE 15.

PREVIOUSLY RECORDED IN BOOK _____, PAGE _____
MONUMENT DESCRIPTION AND HOW ESTABLISHED FOUND
GRANITE STONE 0.5" BELOW SURFACE. TIES AS INDICATED. EAST
QUARTER OF SECTION 29, TOWNSHIP 86 NORTH, RANGE 4 WEST OF
THE 5TH PRINCIPAL MERIDIAN, JONES COUNTY, IOWA.

CORNERS TO BE INDEXED

CORNER SECTION TOWNSHIP RANGE

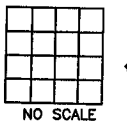
OFFICE FILE NO.



CORNERS TO BE INDEXED

CORNER SECTION TOWNSHIP RANGE

OFFICE FILE NO.



PREVIOUSLY RECORDED IN BOOK _____, PAGE _____
MONUMENT DESCRIPTION AND HOW ESTABLISHED _____

PREVIOUSLY RECORDED IN BOOK _____, PAGE _____
MONUMENT DESCRIPTION AND HOW ESTABLISHED _____

~~I hereby declare that this plat, survey or report was made by me or under my direct personal supervision and that I am a duly registered Land Surveyor under the laws of the State of Iowa.~~

Signed: _____

SEAL

JONES COUNTY
ENGINEER'S OFFICE

19501 HWY. 64,
ANAMOSA, IOWA,
52205 (319)462-3785