

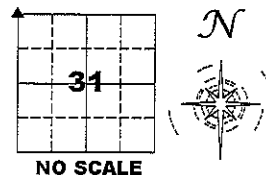
COPY

PREPARED BY
 CLARENCE J. WALTON, JONES COUNTY ENGINEER'S OFFICE, 19501 HWY. 64, ANAMOSA, IOWA, 52205 (319) 462-3785

UNITED STATES PUBLIC LAND
 SURVEY CORNER CERTIFICATE
 LAND SURVEY MONUMENTS SITUATED IN SECTION 31, TOWNSHIP 86 NORTH,
 RANGE 4 WEST OF THE 5TH PRINCIPAL MERIDIAN, JONES COUNTY, IOWA.

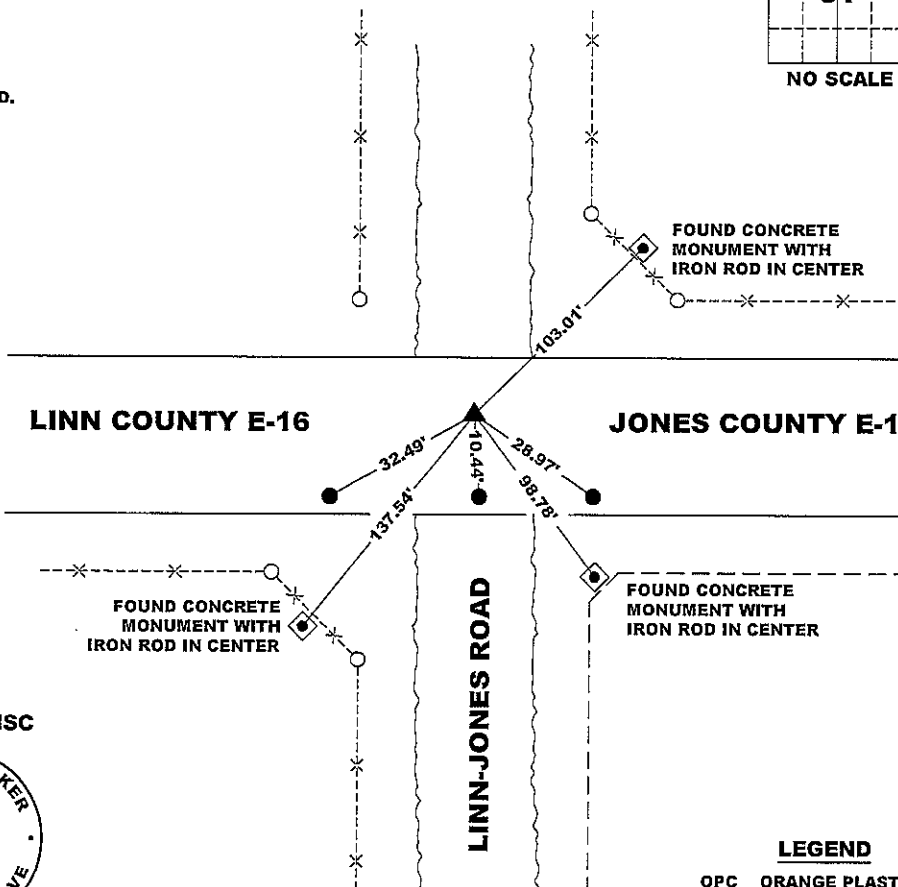
STATE PLANE COORDINATE
 NAD 83 IOWA NORTH
 N: 3551894.34
 E: 5499779.17

CORNER SECTION TOWNSHIP RANGE
 NW 31 86N 4W



NOTES:

- 1) THE STATE PLANE COORDINATES AS SHOWN ARE FOR CONVENIENCE ONLY. THE TIES AS SHOWN SHOULD BE USED TO REPLACE THE CORNER, IF DESTROYED.
- 2) COORDINATES AS SHOWN ARE GRID COORDINATES AND BASED ON JONES COUNTY G.P.S. CONTROL NETWORK WHICH IN TURN IS BASED ON NAD 83 IOWA NORTH DATUM.
- 3) ALL MEASUREMENTS ARE IN FEET AND DECIMALS THEREOF.
- 4) * GRID DISTANCE, BASED ON JONES COUNTY G.P.S. CONTROL NETWORK.



"SURVEY MARKER" SIGN

PLEASE PROTECT NEARBY
SURVEY MARKER
 IF LOCATION OF THIS MARK IS ENDANGERED PLEASE CONTACT JONES COUNTY ENGINEER'S OFFICE
 319-462-3785

SURVEY DISC



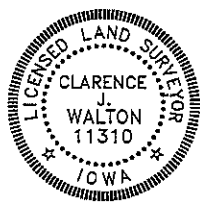
LEGEND

- OPC ORANGE PLASTIC CAP
- YPC YELLOW PLASTIC CAP
- () RECORDED AS
- SET "MAG NAIL" 1' NORTH OF SOUTH EDGE OF PAVING

PAGE 1 of 1

PREVIOUSLY RECORDED IN N/A
 MONUMENT DESCRIPTION AND HOW ESTABLISHED FOUND 5/8" ROD WITH "X" CUT IN PAVEMENT 0.7' NORTH OF CENTERLINE JOINT OF PAVEMENT FOR E-16 PER UNRECORDED TIES IN THE JONES COUNTY ENGINEER'S OFFICE. "MAG NAILS" WERE SET 1' NORTH OF SOUTH EDGE OF CONCRETE PAVEMENT OF COUNTY ROAD E-16.

DATE OF SURVEY: 10/23/12 FIELD BOOK: MISCELLANEOUS 2012, PAGE 158



I hereby certify that this land surveying document and the related survey work was performed by me or under my direct personal supervision and that I am a duly registered Land Surveyor under the laws of the State of Iowa.
 Signed: *Clarence J. Walton* 10/29/12
 Clarence J. Walton, L.S.
 My Registration Renewal Date is December 31, 2013
 Iowa License Number 11310
 Pages or sheets covered by this seal: 1 of 1.

- A. THERE IS NO CERTIFICATE FOR THE CORNER ON FILE WITH THE RECORDER OF THE COUNTY IN WHICH THE CORNER IS LOCATED.
- B. THE CORNER MONUMENT HAS BEEN REPLACED OR MODIFIED.
- C. THE SURVEYOR IN RESPONSIBLE CHARGE OF THE LAND SURVEYING ACCEPTS A CORNER POSITION THAT DIFFERS FROM THAT SHOWN IN THE PUBLIC RECORDS OF THE COUNTY IN WHICH THE CORNER IS LOCATED.
- D. THE REFERENCE TIES REFERRED TO IN AN EXISTING PUBLIC RECORD NO LONGER EXIST.

CORNERS TO BE INDEXED

CORNER	SECTION	TOWNSHIP	RANGE
NW CORNER	31	86N	4W
NE CORNER	36	86N	5W
SE CORNER	25	86N	5W
SW CORNER	30	86N	4W

JONES COUNTY ENGINEER'S OFFICE



19501 HWY. 64, ANAMOSA, IOWA 52205
 (319) 462-3785

THIS IS NOT A CERTIFICATION

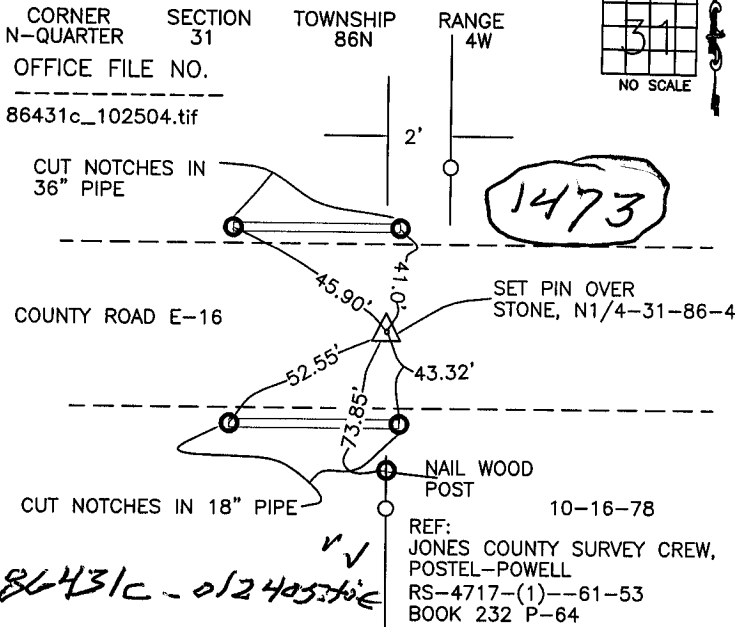
N

JONES COUNTY ENGINEER'S OFFICE, 19501 HWY. 64, ANAMOSA, IOWA, 52205 (319)462-3785

UNITED STATES PUBLIC LAND SURVEY CORNER CERTIFICATE

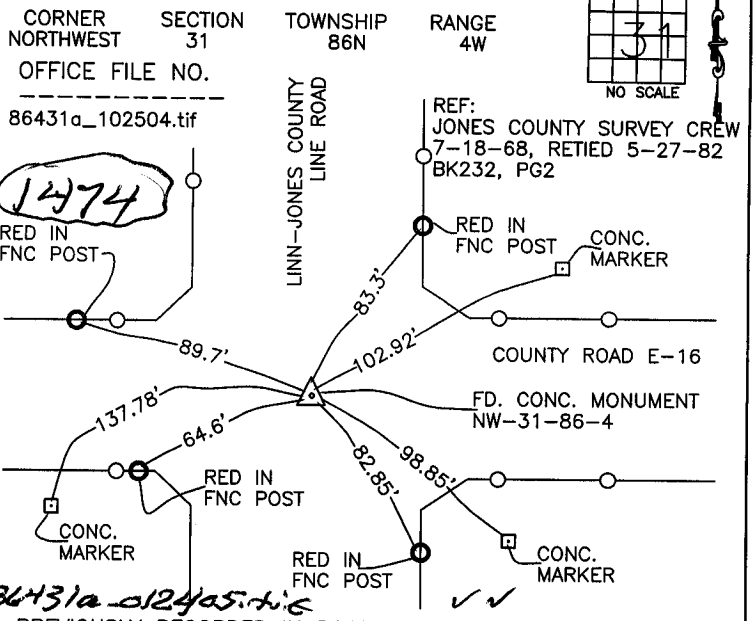
LAND SURVEY MONUMENTS SITUATED IN SECTION 31, TOWNSHIP 86 NORTH, RANGE 4 WEST OF THE 5TH P.M., JONES COUNTY, IOWA

CORNERS TO BE INDEXED



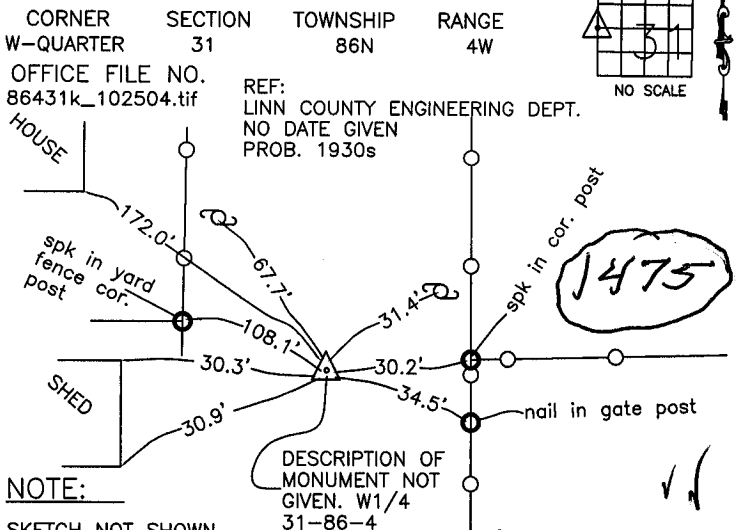
PREVIOUSLY RECORDED IN BOOK _____, PAGE _____
 MONUMENT DESCRIPTION AND HOW ESTABLISHED SET
 22" IRON PIN OVER STONE ON LINE FENCE SOUTH, 2' WEST OF FENCE NORTH, NORTH QUARTER CORNER SECTION 31, TOWNSHIP 86 NORTH, RANGE 4 WEST OF THE 5TH PRINCIPAL MERIDIAN, JONES COUNTY, IOWA.

CORNERS TO BE INDEXED



PREVIOUSLY RECORDED IN BOOK _____, PAGE _____
 MONUMENT DESCRIPTION AND HOW ESTABLISHED FOUND
 CONC. MONUMENT 27" DOWN 0.7' LT STA. 2+99.3 IN 1968. TIED TO FENCE POSTS AS INDICATED. JONES COUNTY SURVEY CREW RECOVERED MONUMENT IN 1982. TIED TO CONC. MARKERS AS INDICATED. NORTHWEST CORNER SECTION 31, TOWNSHIP 86 NORTH, RANGE 4 WEST OF THE 5TH PRINCIPAL MERIDIAN, JONES COUNTY, IOWA.

CORNERS TO BE INDEXED

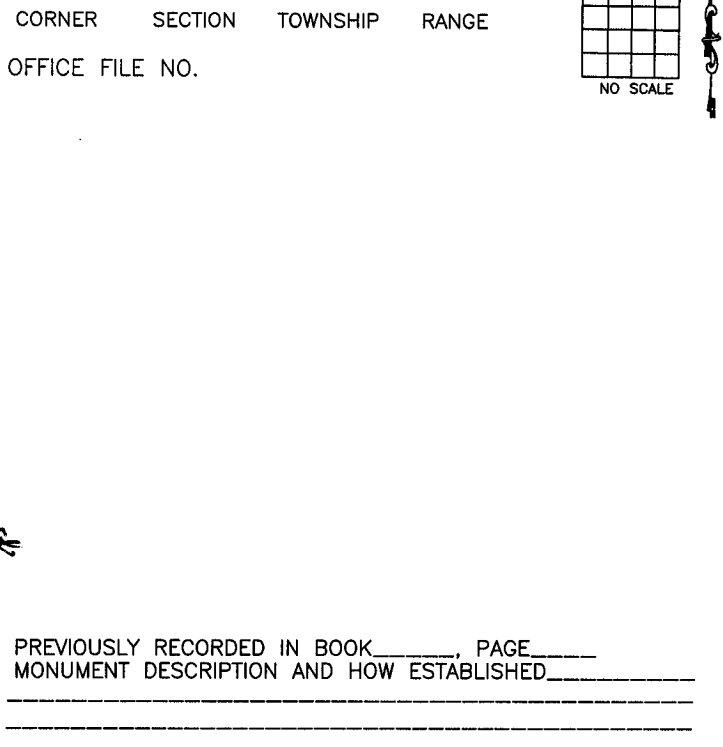


NOTE: SKETCH NOT SHOWN ON INDEX CARD. THIS SKETCH MADE FROM TIE DESCRIPTIONS, AND MAY NOT REPRESENT ACTUAL TOPOGRAPHY IN AREA.

DESCRIPTION OF MONUMENT NOT GIVEN. W1/4 31-86-4

PREVIOUSLY RECORDED IN BOOK _____, PAGE _____
 MONUMENT DESCRIPTION AND HOW ESTABLISHED RESTORED
 DESCRIPTION OF MONUMENT NOT GIVEN. LINN COUNTY SET IN CENTER OF ROAD IN LINE WITH FENCE EAST ON STRAIGHT LINE BETWEEN NW COR. AND SW COR. 31-86-4. WEST QUARTER CORNER SECTION 31, TOWNSHIP 86 NORTH, RANGE 4 WEST OF THE 5TH PRINCIPAL MERIDIAN, JONES COUNTY, IOWA.

CORNERS TO BE INDEXED



I hereby declare that this plat, survey or report was made by me or under my direct personal supervision and that I am a duly registered Land Surveyor under the laws of the State of Iowa.

Signed: _____

SEAL

JONES COUNTY ENGINEER'S OFFICE

19501 HWY. 64, ANAMOSA, IOWA, 52205 (319)462-3785