

SECTION CORNER CERTIFICATE

OF
 LAND SURVEY MONUMENTS SITUATED IN SECTION 34, TOWNSHIP 86 NORTH,
 RANGE 4 WEST, OF THE FIFTH PRINCIPAL MERIDIAN, JONES, COUNTY, IOWA.

PREVIOUSLY RECORDED IN BOOK _____ AT PAGE _____

FOR RECORDER'S USE

REASON FOR PREPARING CERTIFICATE:

- A) THERE IS NO CERTIFICATE FOR THE CORNER ON FILE WITH THE RECORDER OF THE COUNTY IN WHICH THE CORNER IS LOCATED.
- B) CORNER POSITION DIFFERS FROM THAT SHOWN IN THE PUBLIC RECORDS OF THE COUNTY IN WHICH THE CORNER IS LOCATED.
- C) THE CORNER MONUMENT HAS BEEN REPLACED OR MODIFIED.
- D) THE REFERENCE TIES REFERRED TO IN AN EXISTING PUBLIC RECORD ARE INCORRECT.

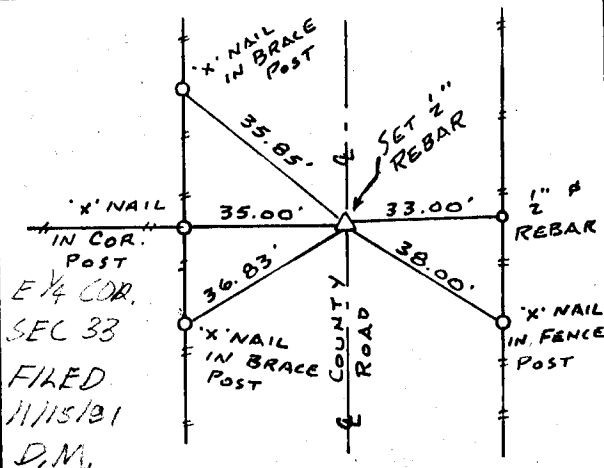
MONUMENT DESCRIPTION AND REMARKS :

W 1/4 CORNER SECTION 34-86-4 SET 1/2" # REBAR WITH L.S. CAP # 8165 3" DEEP ON E COUNTY ROAD IN LINE WITH FL. WEST

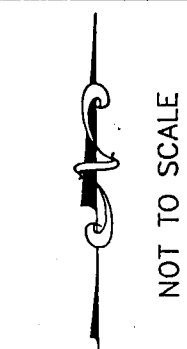
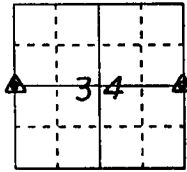
E 1/4 CORNER SECTION 34-86-4 SET 1/2" # REBAR WITH L.S. CAP # 8165 2" DEEP ON E COUNTY ROAD IN LINE WITH FL. WEST AND 160.5' SOUTH OF FENCE LINE EAST

RECOVERY TIE DRAWING

W 1/4 COR. SEC. 34-86-4

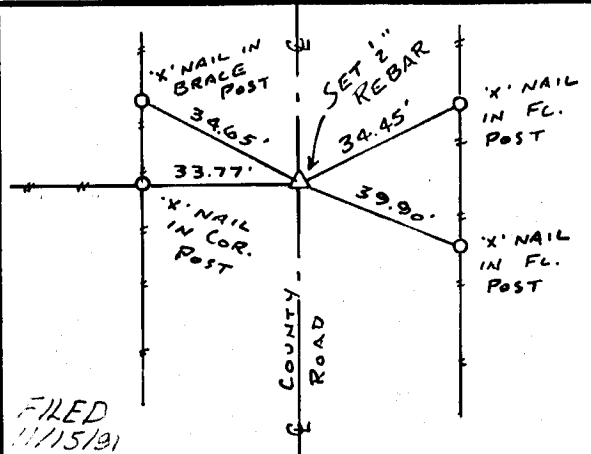


E 1/4 COR. SEC 33
 FILED
 11/15/91
 D.M.



NOT TO SCALE

E 1/4 COR. SEC. 34-86-4



FILED
 11/15/91
 D.M.

I, GLEN D. MEISNER, CERTIFY THAT THE CORNER LOCATION(S) SHOWN ON THIS RECORD WERE DETERMINED BY ME OR UNDER MY DIRECTION AND CONTROL AND THAT THIS U.S. PUBLIC LAND SURVEY MONUMENT RECORD IS CORRECT AND COMPLETE TO THE BEST OF MY KNOWLEDGE AND BELIEF.



Glen D. Meisner 11-6-91
 GLEN D. MEISNER L.S. NO 8165 DATE

DZMOMT	△ GOVERNMENT CORNER ○ 5/8" TIE PIN SET --- CENTERLINE - - - EXISTING FENCE LINE - - - R.O.W. LINE	SHEET TITLE: U.S. PUBLIC LAND SURVEY RECORD PROJECT TITLE: JOHN CAMPBELL SURVEY	HALL AND HALL ENGINEERS, INC. 226 29TH STREET DRIVE S.E. CEDAR RAPIDS, IOWA 52403 319-362-9548			
	DW N R.W.B.	KIC G.D.M.		APP	DATE 10-30-91	SCALE NONE