

FEE BOOK: 2009 3247 9/23/2009 11:20 AM  
 REC FEES: \$9.00  
 PAGES: 1

Marie Krutzfield, Recorder  
 Jones County, Iowa

PREPARED BY: MICHAEL J. WEBER, WEBER SURVEYING, LLC, 26789 46TH AVE, BERNARD, IA 52032 (563) 879-4173

## UNITED STATES PUBLIC LAND SURVEY CORNER CERTIFICATE

□

LAND SURVEY MONUMENTS SITUATED IN SECTION 12, TOWNSHIP 85 NORTH, RANGE 1 WEST OF THE FIFTH PRINCIPAL MERIDIAN, JONES COUNTY, IOWA.  
 PREVIOUSLY RECORDED NONE UNLESS OTHERWISE NOTED

(book, page, document number, etc)

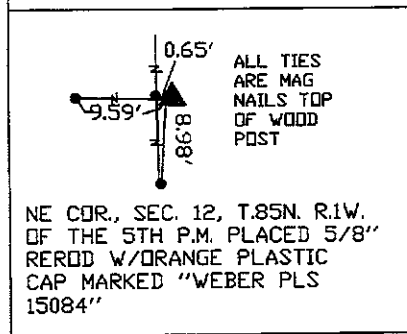
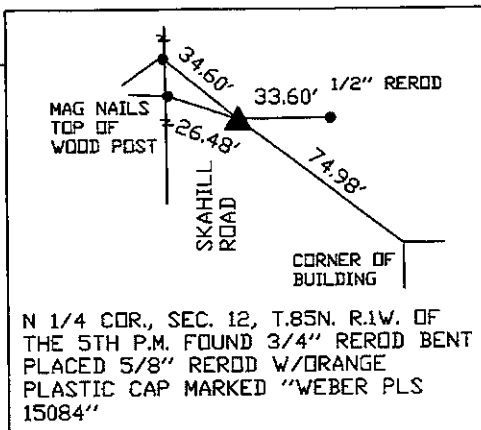
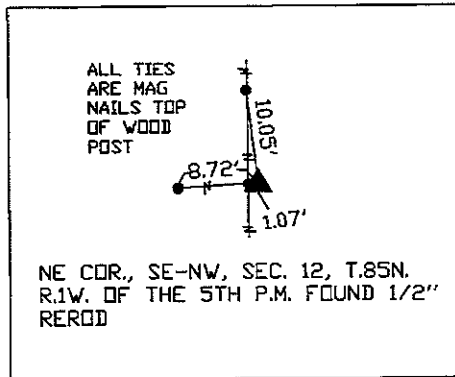
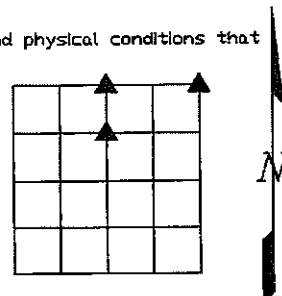
(Show reason for preparing this certificate, the evidence and detailed procedures used in establishing the corner positions and monumentation found or placed.)

**Monument Description and Remarks:**

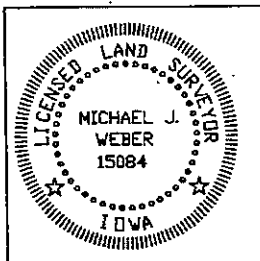
- N 1/4 COR., SEC. 12, T.85N. R.1W. OF THE 5TH P.M. FOUND 3/4" REROD BENT REPLACED WITH 5/8" REROD W/DRANGE PLASTIC CAP MARKED "WEBER PLS 15084" AS SHOWN IN PLAT BOOK F PAGE 127 OF THE JONES COUNTY RECORDER'S OFFICE
- NE COR., SEC. 12, T.85N. R.1W. OF THE 5TH P.M. PLACED 5/8" REROD W/DRANGE PLASTIC CAP MARKED "WEBER PLS 15084" ESTABLISHED CORNER AT THE INTERSECTION OF OCCUPATION FENCELINE NORTH, SOUTH AND WEST
- NE COR., SE-NW, SEC. 12, T.85N. R.1W. OF THE 5TH P.M. FOUND 1/2" REROD AS SHOWN IN PLAT BOOK F PAGE 128 OF THE JONES COUNTY RECORDER'S OFFICE

### PLAN - VIEW

(Show a minimum of three reference ties to durable physical objects, relevant monuments and physical conditions that will enable recovery of the corner.)



DWG NO: DRISCOLL



I HEREBY CERTIFY THAT THIS LAND SURVEYING DOCUMENT WAS PREPARED AND THE RELATED SURVEY WORK WAS PERFORMED BY ME OR UNDER MY DIRECT PERSONAL SUPERVISION AND THAT I AM A DULY LICENSED LAND SURVEYOR UNDER THE LAWS OF THE STATE OF IOWA.

*Michael J. Weber*  
 MICHAEL J. WEBER (DATE) September 22, 2009  
 LICENSE NUMBER 15084  
 MY LICENSE RENEWAL DATE IS DECEMBER 31, 2009

SHEETS COVERED BY THIS SEAL: 1

List Corners to be Indexed		
Corner	Sec	Twp Range
N 1/4 COR	12	85N 1W
NE COR	12	85N 1W
NE COR, SE-NW	12	85N 1W