

COPY

FEEBOOK: 2010 0028 1/5/2010 10:28 AM
REC FEES: \$9.00
PAGES: 1

Marie Krutzfield, Recorder
Jones County, Iowa

PREPARED BY: MICHAEL J. WEBER, WEBER SURVEYING, LLC, 26789 46TH AVE, BERNARD, IA 52032 (563) 879-4173

UNITED STATES PUBLIC LAND SURVEY CORNER CERTIFICATE
OF

LAND SURVEY MONUMENTS SITUATED IN SECTION 17, TOWNSHIP 85 NORTH, RANGE 1 WEST
OF THE FIFTH PRINCIPAL MERIDIAN, JONES COUNTY, IOWA.
PREVIOUSLY RECORDED NONE UNLESS OTHERWISE NOTED

(Book, page, document number, etc.)

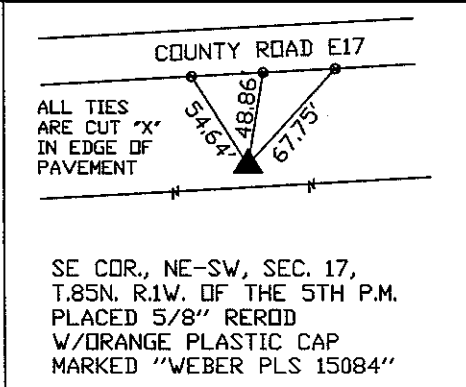
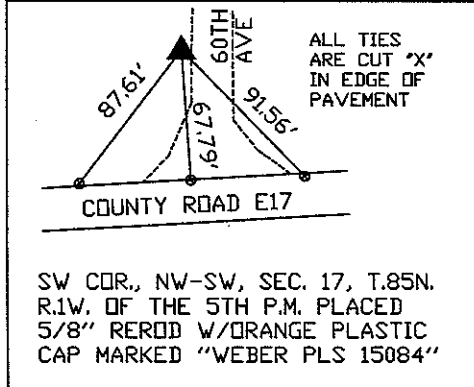
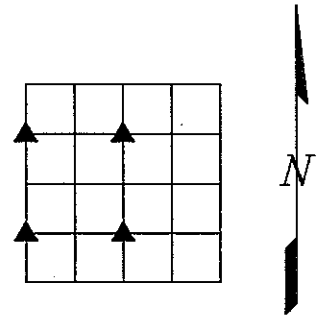
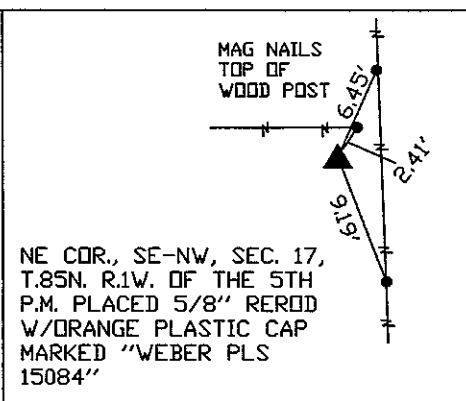
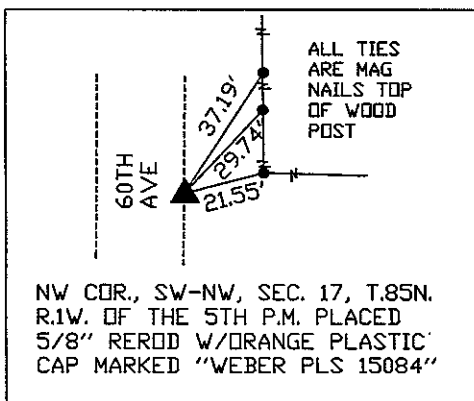
(Show reason for preparing this certificate, the evidence and detailed procedures used in establishing the corner positions and monumentation found or placed.)

Monument Description and Remarks:

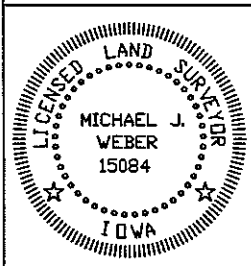
- NW COR., SW-NW, SEC. 17, T.85N. R.1W. OF THE 5TH P.M. PLACED 5/8" REROD W/ORANGE PLASTIC CAP MARKED "WEBER PLS 15084" ESTABLISHED CORNER MIDWAY BETWEEN THE W 1/4 & THE NW CORNER OF SEC.17.
- NE COR., SE-NW, SEC. 17, T.85N. R.1W. OF THE 5TH P.M. PLACED 5/8" REROD W/ORANGE PLASTIC CAP MARKED "WEBER PLS 15084". ESTABLISHED CORNER MIDWAY BETWEEN THE N 1/4 & THE CENTER OF SEC.17.
- SW COR., NW-SW, SEC. 17, T.85N. R.1W. OF THE 5TH P.M. PLACED 5/8" REROD W/ORANGE PLASTIC CAP MARKED "WEBER PLS 15084". ESTABLISHED CORNER MIDWAY BETWEEN THE W 1/4 & THE SW CORNER OF SEC.17.
- SE COR., NE-SW, SEC. 17, T.85N. R.1W. OF THE 5TH P.M. PLACED 5/8" REROD W/ORANGE PLASTIC CAP MARKED "WEBER PLS 15084". ESTABLISHED CORNER MIDWAY BETWEEN THE S 1/4 & THE CENTER OF SEC.17.

PLAN - VIEW

(Show a minimum of three reference ties to durable physical objects, relevant monuments and physical conditions that will enable recovery of the corner.)



DWG NO: KOPPES-N



I HEREBY CERTIFY THAT THIS LAND SURVEYING DOCUMENT WAS PREPARED AND THE RELATED SURVEY WORK WAS PERFORMED BY ME OR UNDER MY DIRECT PERSONAL SUPERVISION AND THAT I AM A DULY LICENSED LAND SURVEYOR UNDER THE LAWS OF THE STATE OF IOWA.

Michael J. Weber January 4, 2010
MICHAEL J. WEBER (DATE)

LICENSE NUMBER 15084
MY LICENSE RENEWAL DATE IS DECEMBER 31, 2011

SHEETS COVERED BY THIS SEAL: _____

List Corners to be Indexed		
Corner	Sec	Twp Range
NW COR, SW-NW	17	85N 1W
NE COR, SE-NW	17	85N 1W
SE COR, NE-SW	17	85N 1W
SW COR, NW-SW	17	85N 1W