

COPY

Jones County
Marie Krutzfield, Recorder
Fee Book 2010 1019

04/23/2010 @0233PM
ZSC SEC COR CERT
Book: Page: # Pages: 2
Total Fees: \$0.00

PREPARED BY

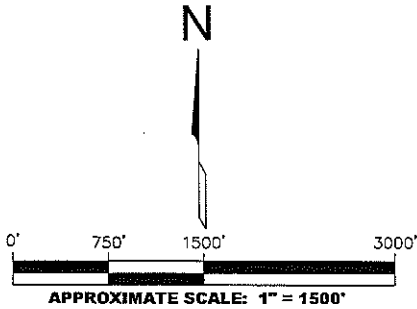
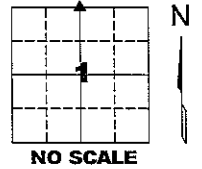
CLARENCE J. WALTON, JONES COUNTY ENGINEER'S OFFICE, 19501 HWY. 64, ANAMOSA, IOWA, 52205 (319) 462-3785

COVER SHEET
UNITED STATES PUBLIC LAND SURVEY CORNER CERTIFICATE
LAND SURVEY MONUMENTS SITUATED IN SECTION 1, TOWNSHIP 85 NORTH,
RANGE 1 WEST OF THE 5TH PRINCIPAL MERIDIAN, JONES COUNTY, IOWA.

NOTES:

- 1) THE STATE PLANE COORDINATES AS SHOWN ARE FOR CONVENIENCE ONLY. THE TIES AS SHOWN SHOULD BE USED TO REPLACE THE CORNER, IF DESTROYED.
- 2) COORDINATES AS SHOWN ARE GRID COORDINATES AND BASED ON JONES COUNTY G.P.S. CONTROL NETWORK WHICH IN TURN IS BASED ON NAD 83 IOWA NORTH DATUM.
- 3) BASIS OF BEARINGS ARE BASED ON JONES COUNTY G.P.S. CONTROL NETWORK.
- 4) ALL MEASUREMENTS ARE IN FEET AND DECIMALS THEREOF. DISTANCES ON THIS COVER SHEET ARE GRID DISTANCES.
- 5) APPROXIMATE SCALE IS GIVEN IN ORDER TO FACILITATE NAVIGATION TO CORNERS IN CASE GPS IS NOT USED.

SECTION TOWNSHIP RANGE
1 T85N R1W



LEGEND

- HARDWOOD TIMBER
- FENCE LINE
- RECORDED AS
- PER ORIGINAL GOVERNMENT SURVEY FIELD NOTES

NE CORNER
SECTION 2-T85N-R1W
5/8" REBAR W/ OPC #11310
N: 3549432.86
E: 5620739.19

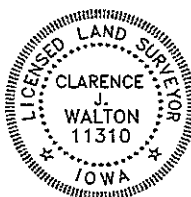
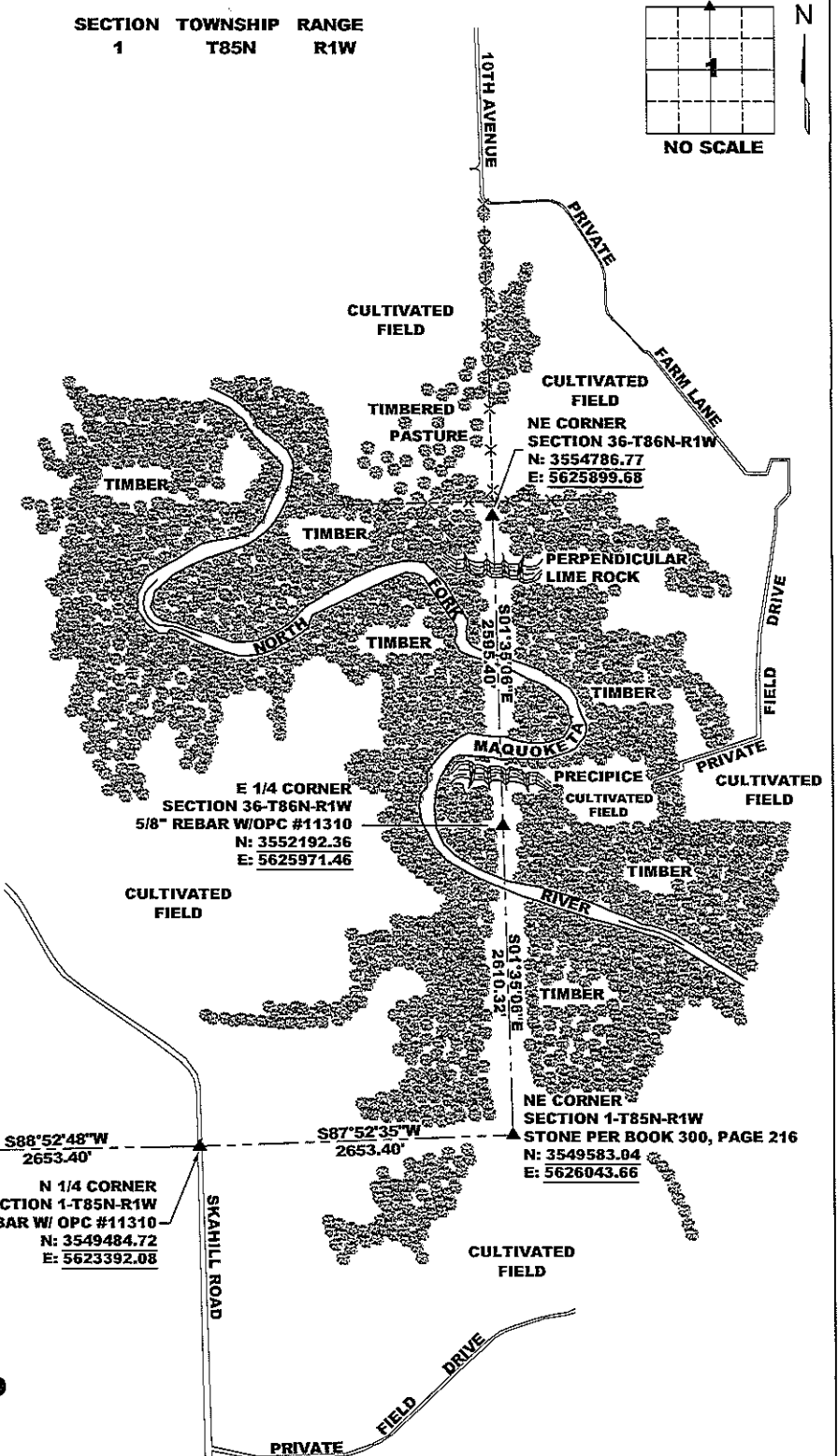
N 1/4 CORNER
SECTION 1-T85N-R1W
5/8" REBAR W/ OPC #11310
N: 3549484.72
E: 5623392.08

S88°52'48"W
2653.40'

S87°52'35"W
2653.40'

VICINITY MAP

PAGE 1 of 2



I hereby certify that this land surveying document and the related survey work was performed by me or under my direct personal supervision and that I am a duly registered Land Surveyor under the laws of the State of Iowa.
Signed: *Clarence J. Walton* 4/23/10
Clarence J. Walton, L.S.
My Registration Renewal Date is December 31, 2011
Iowa License Number 11310
Pages or sheets covered by this seal: 1 of 1.

JONES COUNTY ENGINEER'S OFFICE



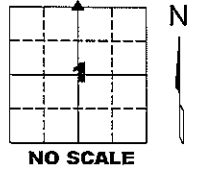
19501 HWY. 64, ANAMOSA, IOWA 52205
(319) 462-3785

UNITED STATES PUBLIC LAND SURVEY CORNER CERTIFICATE

LAND SURVEY MONUMENTS SITUATED IN SECTION 1, TOWNSHIP 85 NORTH,
 RANGE 1 WEST OF THE 5TH PRINCIPAL MERIDIAN, JONES COUNTY, IOWA.

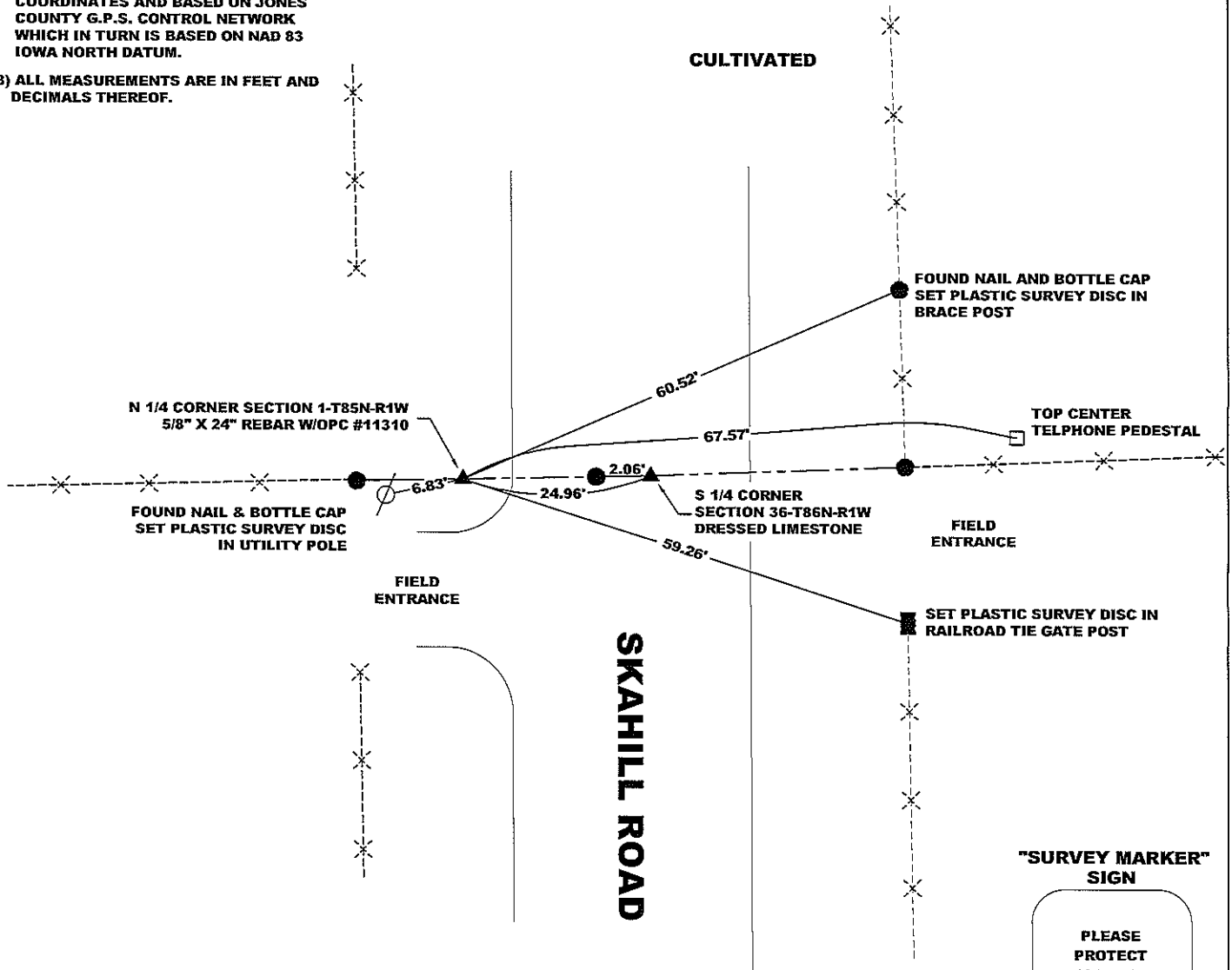
STATE PLANE COORDINATE
 NAD 83 IOWA NORTH
 N 3549484.72
 E 5623392.08

CORNER SECTION TOWNSHIP RANGE
 N 1/4 CORNER 1 T85N R1W



NOTES:

- 1) THE STATE PLANE COORDINATES AS SHOWN ARE FOR CONVENIENCE ONLY. THE TIES AS SHOWN SHOULD BE USED TO REPLACE THE CORNER, IF DESTROYED.
- 2) COORDINATES AS SHOWN ARE GRID COORDINATES AND BASED ON JONES COUNTY G.P.S. CONTROL NETWORK WHICH IN TURN IS BASED ON NAD 83 IOWA NORTH DATUM.
- 3) ALL MEASUREMENTS ARE IN FEET AND DECIMALS THEREOF.



LEGEND

- OPC ORANGE PLASTIC CAP
- () RECORDED AS
- PER ORIGINAL
- [] GOVERNMENT SURVEY
- FIELD NOTES

SURVEY DISC



"SURVEY MARKER" SIGN

PLEASE PROTECT NEARBY

SURVEY MARKER

IF LOCATION OF THIS MARK IS ENDANGERED PLEASE CONTACT JONES COUNTY ENGINEER'S OFFICE 319-462-3785

PAGE 2 of 2

PREVIOUSLY RECORDED IN N/A

MONUMENT DESCRIPTION AND HOW ESTABLISHED DUG EXTENSIVELY. FOUND NO EVIDENCE OF CORNER. SET 5/8" REBAR WITH ORANGE PLASTIC CAP #11310 EQUIDISTANT BETWEEN THE NE CORNER OF SECTION 1-T85N-R1W AND THE NW CORNER OF SECTION 1-T85N-1W AND ON LINE BETWEEN THE S 1/4 CORNER OF SECTION 36-T86N-R1W AND THE SW CORNER OF SAID SECTION 36.

FIELD BOOK 344, PAGE 69. DATE OF SURVEY: 1/19/10

I hereby certify that this land surveying document and the related survey work was performed by me or under my direct personal supervision and that I am a duly registered Land Surveyor under the laws of the State of Iowa.

Signed: *Clarence J. Walton* 4/23/10
 Clarence J. Walton, L.S.
 My Registration Renewal Date is December 31, 2011
 Iowa License Number 11310
 Pages or sheets covered by this seal: 1 of 1.

- A. THERE IS NO CERTIFICATE FOR THE CORNER ON FILE WITH THE RECORDER OF THE COUNTY IN WHICH THE CORNER IS LOCATED.
- B. THE CORNER MONUMENT HAS BEEN REPLACED OR MODIFIED.
- C. THE SURVEYOR IN RESPONSIBLE CHARGE OF THE LAND SURVEYING ACCEPTS A CORNER POSITION THAT DIFFERS FROM THAT SHOWN IN THE PUBLIC RECORDS OF THE COUNTY IN WHICH THE CORNER IS LOCATED.
- D. THE REFERENCE TIES REFERRED TO IN AN EXISTING PUBLIC RECORD NO LONGER EXIST.
- E. EXISTING CORNER TIES UPDATED.

CORNERS TO BE INDEXED

CORNER	SECTION	TOWNSHIP	RANGE
N 1/4 CORNER	1	85N	1W

JONES COUNTY ENGINEER'S OFFICE



19501 HWY. 64, ANAMOSA, IOWA 52205
 (319) 462-3785

UNITED STATES PUBLIC LAND SURVEY CORNER CERTIFICATE

OF

Land Survey Monuments situated in Section 36, Township 86 N, Range 1 W, of the Fifth Principal Meridian, Jones County, Iowa. Previously recorded in _____ in County Recorder's Office.

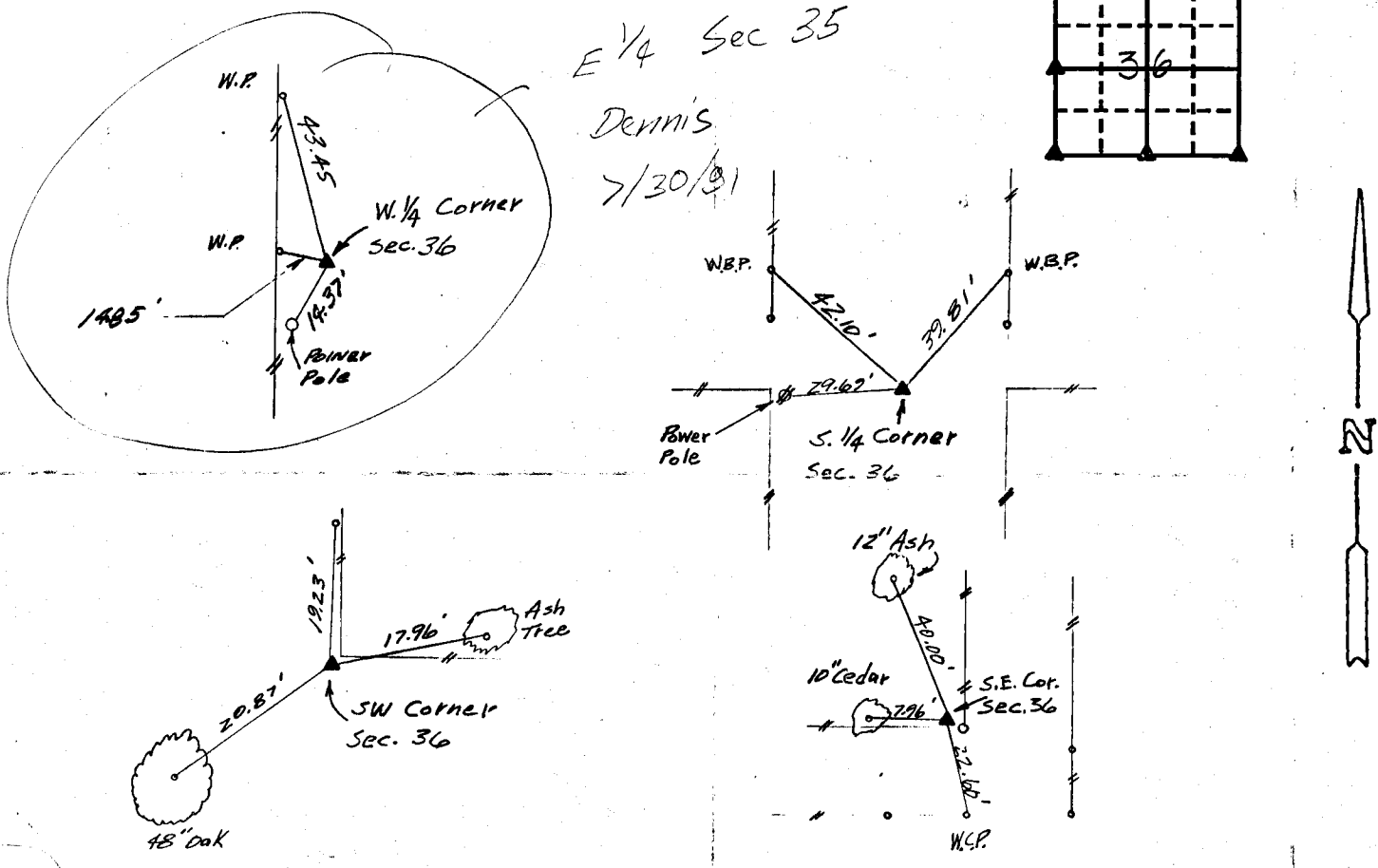
(book, page, document number, etc.)

(Show reason for preparing this certificate, the evidence and detailed procedures used in establishing the corner positions and monumentation found or placed.)

Monument Description and Remarks: NW Corner SW 1/4 - Set 1/2" Rebar
SW Corner - Fd. Stone set 1/2" Rebar
SE Corner SW 1/4 - Set 1/2" Rebar
SE Corner - Fd. Stone set 1/2" Rebar.

PLAN - VIEW

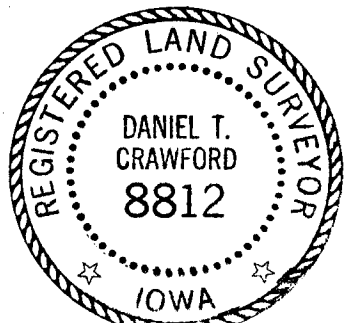
(Show a minimum of three reference ties to durable physical objects, relevant monuments and physical conditions that will enable recovery of the corner.)



I hereby certify that the survey work was completed and this certificate was prepared by me or under my direct personal supervision and that I am a duly registered land surveyor under the laws of the state of Iowa.

Signature: Daniel T. Crawford
 Name typed or printed: Daniel T. Crawford, R.L.S.
 Date: April 9, 1991 Reg. No. 8812

Corners	List Corners to be Indexed		
	Section	Twp	Range
NW Corner SW 1/4	36	86 N	R1W
SW Corner	36	86 N	R1W
SE Corner SW 1/4	36	86 N	R1W
SE Corner	36	86 N	R1W



SEAL

Jones County
 Marie Krutzfield, Recorder
 Fee Book 2010 1018

04/23/2010 @0231PM
 ZSC SEC COR CERT # Pages: 4
 Book: Page: \$0.00
 Total Fees:

COPY

PREPARED BY
 CLARENCE J. WALTON, JONES COUNTY ENGINEER'S OFFICE, 19501 HWY. 64, ANAMOSA, IOWA, 52205 (319) 462-3785

COVER SHEET

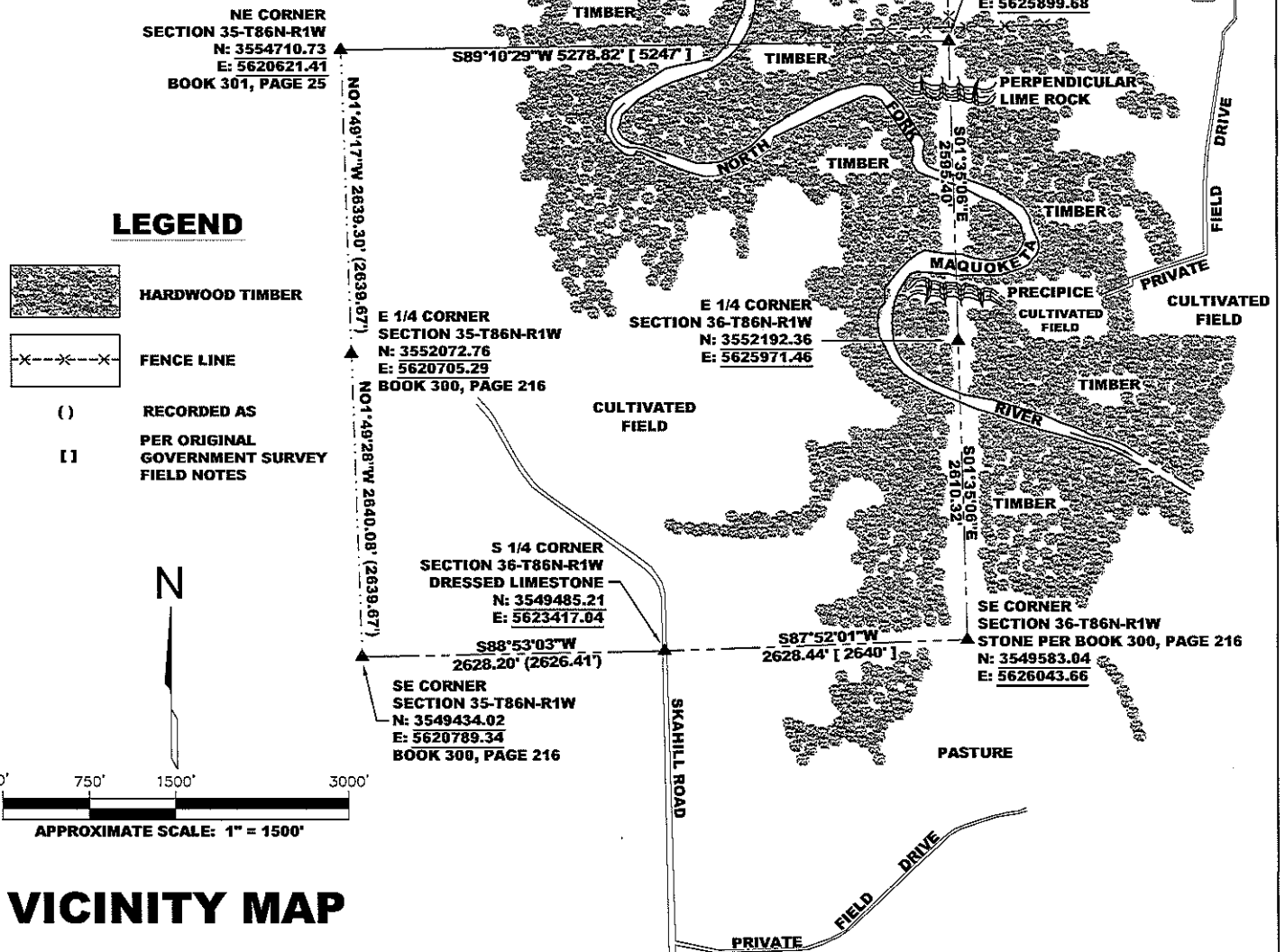
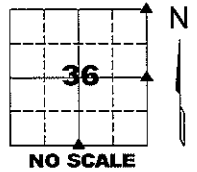
UNITED STATES PUBLIC LAND SURVEY CORNER CERTIFICATE

LAND SURVEY MONUMENTS SITUATED IN SECTION 36, TOWNSHIP 86 NORTH, RANGE 1 WEST OF THE 5TH PRINCIPAL MERIDIAN, JONES COUNTY, IOWA.

NOTES:

- 1) THE STATE PLANE COORDINATES AS SHOWN ARE FOR CONVENIENCE ONLY. THE TIES AS SHOWN SHOULD BE USED TO REPLACE THE CORNER, IF DESTROYED.
- 2) COORDINATES AS SHOWN ARE GRID COORDINATES AND BASED ON JONES COUNTY G.P.S. CONTROL NETWORK WHICH IN TURN IS BASED ON NAD 83 IOWA NORTH DATUM.
- 3) BASIS OF BEARINGS ARE BASED ON JONES COUNTY G.P.S. CONTROL NETWORK.
- 4) ALL MEASUREMENTS ARE IN FEET AND DECIMALS THEREOF. DISTANCES ON THIS COVER SHEET ARE GRID DISTANCES.
- 5) APPROXIMATE SCALE IS GIVEN IN ORDER TO FACILITATE NAVIGATION TO CORNERS IN CASE GPS IS NOT USED.

SECTION TOWNSHIP RANGE
 36 T86N R1W



I hereby certify that this land surveying document and the related survey work was performed by me or under my direct personal supervision and that I am a duly registered Land Surveyor under the laws of the State of Iowa.

Signed:
Clarence J. Walton 4/23/18
 Clarence J. Walton, L.S.
 My Registration Renewal Date is December 31, 2011
 Iowa License Number 11310
 Pages or sheets covered by this seal: 1 of 1.

JONES COUNTY ENGINEER'S OFFICE

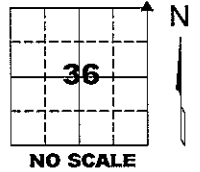
19501 HWY. 64, ANAMOSA, IOWA 52205
 (319) 462-3785

UNITED STATES PUBLIC LAND SURVEY CORNER CERTIFICATE

**LAND SURVEY MONUMENTS SITUATED IN SECTION 36, TOWNSHIP 86 NORTH,
 RANGE 1 WEST OF THE 5TH PRINCIPAL MERIDIAN, JONES COUNTY, IOWA.**

STATE PLANE COORDINATE
 NAD 83 IOWA NORTH
 N 3554786.77
 E 5625899.68

CORNER SECTION TOWNSHIP RANGE
 NE CORNER 36 T86N R1W



NOTES:

- 1) THE STATE PLANE COORDINATES AS SHOWN ARE FOR CONVENIENCE ONLY. THE TIES AS SHOWN SHOULD BE USED TO REPLACE THE CORNER, IF DESTROYED.
- 2) COORDINATES AS SHOWN ARE GRID COORDINATES AND BASED ON JONES COUNTY G.P.S. CONTROL NETWORK WHICH IN TURN IS BASED ON NAD 83 IOWA NORTH DATUM.
- 3) ALL MEASUREMENTS ARE IN FEET AND DECIMALS THEREOF.

SET 5/8" REBAR IN EAST-WEST FENCE
 SET STEEL FENCE POST WITH
 "SURVEY MARKER" SIGN
 NEXT TO PIN AS A WITNESS
 N: 3554818.26
 E: 5625830.47

SET PLASTIC SURVEY DISC
 OVER FOUND X'D NAILS IN
 24" BLACK WALNUT (*Juglans nigra*)

CENTER 45" (10") WHITE OAK
 BEARING TREE (*Quercus alba*)
 STATE PLANE COORDINATES
 NAD 83 IOWA NORTH
 N 3554599.15
 E 5607465.96
 SET STEEL FENCE POST
 W/YELLOW "SURVEY MARKER" SIGN
 ON EAST SIDE OF TREE AS A WITNESS

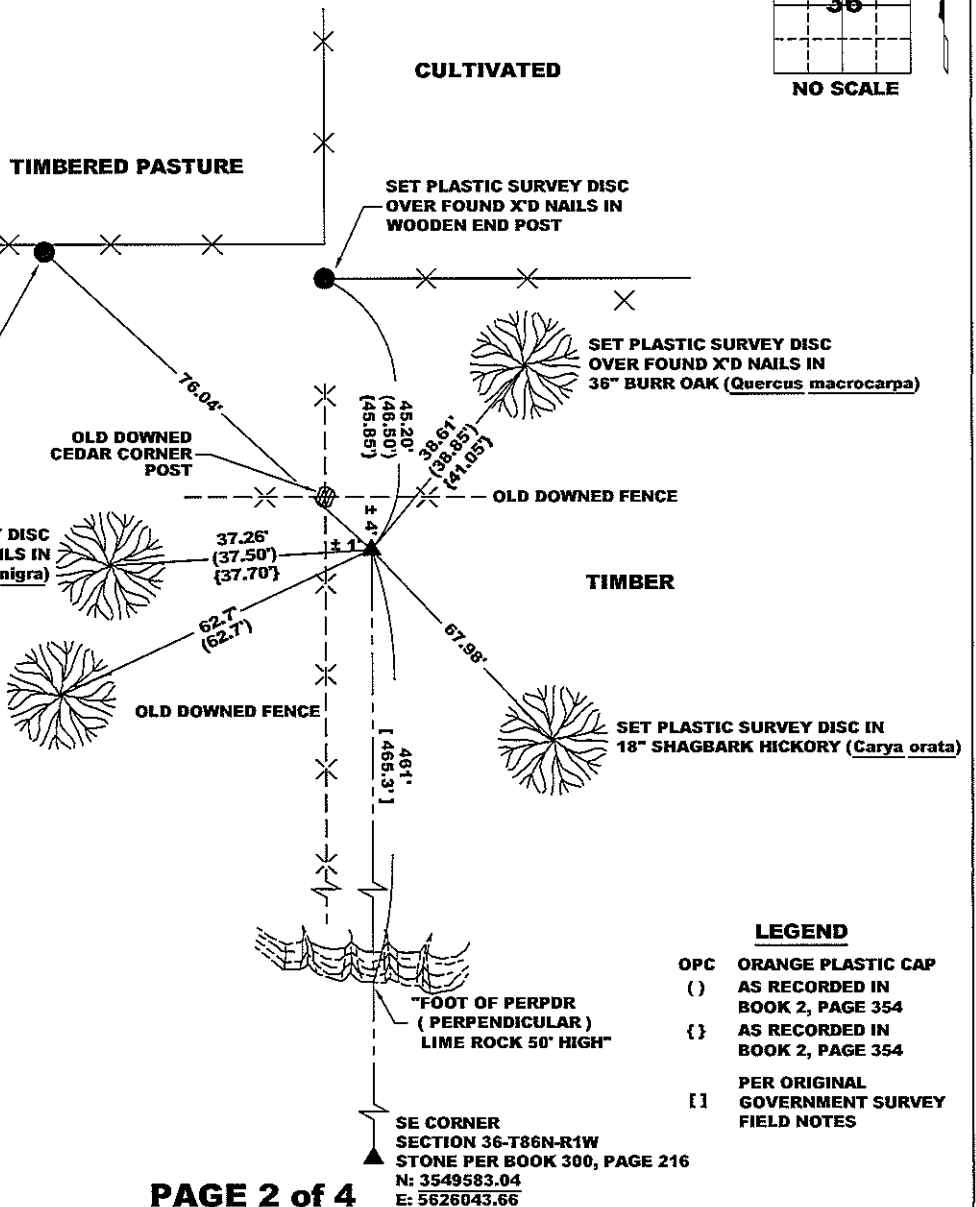
**"SURVEY MARKER"
 SIGN**

PLEASE
 PROTECT
 NEARBY

**SURVEY
 MARKER**

IF LOCATION OF THIS MARK
 IS ENDANGERED
 PLEASE CONTACT
 JONES COUNTY
 ENGINEER'S OFFICE
 319-462-3785

SURVEY DISC



LEGEND

- OPC ORANGE PLASTIC CAP
- () AS RECORDED IN BOOK 2, PAGE 354
- { } AS RECORDED IN BOOK 2, PAGE 354
- [] PER ORIGINAL GOVERNMENT SURVEY FIELD NOTES

PAGE 2 of 4

PREVIOUSLY RECORDED IN BOOK 2, PAGE 354, JACKSON COUNTY RECORDER'S OFFICE AND IN BOOK 301, PAGE 25 IN THE JONES COUNTY, IOWA RECORDER'S OFFICE.

MONUMENT DESCRIPTION AND HOW ESTABLISHED FOUND 16"x14"x4" LIMESTONE STANDING ON EDGE, THE TOP 5" OF WHICH IS ABOVE PRESENT GROUND LEVEL. STONE'S LONG AXIS IS ORIENTED NORTH AND SOUTH. SCRAPED GROUND BELOW STONE FOR EVIDENCE OF ORIGINAL POST, NONE FOUND. SET TWO 5/8" REBAR W/ ORANGE PLASTIC CAPS #11310 AT THE NE AND SE CORNERS OF STONE TO PREVENT STONE FROM FALLING SIDWAYS AND FOR A MAGNETIC SIGNATURE. STONE IS IN CLOSE PROXIMITY TO FALLEN FENCE AND TO OLD CEDAR CORNER POST. A STEEL FENCE POST WITH A YELLOW JONES COUNTY "SURVEY MARKER" SIGN WAS SET APPROXIMATELY 8" EAST OF STONE AS A WITNESS POST. AS THERE IS NO RECORD OF THE STONE'S "PEDIGREE" WE RETRACED THE ORIGINAL GOVERNMENT SURVEY NOTES TO SEE IF THERE WAS ANY COLLABORATION OF EVIDENCE AS TO THE STONE'S POSITION IN REGARD TO THE GOVERNMENT NOTES. WE MEASURED A DISTANCE OF 62.70' TO THE CENTER OF A 45" WHITE OAK SW OF THE STONE WHICH AGREED WITH THE ORIGINAL GOVERNMENT SURVEY NOTES. ASSUMING THE EAST LINE OF SAID SECTION 36 (THE 5TH PRINCIPAL MERIDIAN, AS MONUMENTED BY FOUND STONES AT THE NE & SE CORNERS OF SAID SECTION 36) TO RUN TRUE NORTH (WHICH IS WHAT BURT RAN), THE BEARING TO THE CENTER OF THE BEARING TREE WAS S76°40'28"W. THE GOVERNMENT NOTES CALL FOR S76°W. NO SCARS WERE APPARENT WITHOUT LETTING THE IMAGINATION RUN AWAY. THE ORIGINAL GOVERNMENT NOTES RECITED THAT THE OAK WAS 10" IN DIAMETER (ca 1836) . WITH THE PRESENT DIAMETER BEING 45", THE GROWTH RATE WAS AN AVERAGE OF 0.2" PER YEAR, THIS FALLS RIGHT IN LINE WITH THE NOMINAL GROWTH RATE FOR A WHITE OAK. WE WERE ALSO FORTUNATE TO HAVE A VERY DISTINCTIVE CALLED FOR NATURAL MONUMENT IN THE FORM OF THE "FOOT OF PERPDR [PERPENDICULAR-AUTHOR'S NOTE] LIME ROCK 50 FT. HIGH". THIS IS VERBATIM FROM THE ORIGINAL FIELD NOTES. WE MEASURED 461' FROM WHERE WE THOUGHT THE FOOT WAS AND FOUND WE WERE WITHIN ±4' OF WHAT THE GOVERNMENT NOTES SHOWED. THUS THE FOUND STONE'S LOCATION IS IN ALL LIKELYHOOD WHERE THE ORIGINAL SURVEYOR SET THE POST. QUITE LIKELY WHOEVER SET THE STONE HAD ACTUALLY REPLACED THE SECTION CORNER POST WITH THE STONE OR USED THE GOV'T FIELD NOTES.

FIELD BOOK 344, PAGE 78. DATE OF SURVEY: 10/9/09



I hereby certify that this land surveying document and the related survey work was performed by me or under my direct personal supervision and that I am a duly registered Land Surveyor under the laws of the State of Iowa.
 Signed: *Clarence J. Walton* 4/23/10
 Clarence J. Walton, L.S.
 My Registration Renewal Date is December 31, 2011
 Iowa License Number 11310
 Pages or sheets covered by this seal: 1 of 1.

- A. THERE IS NO CERTIFICATE FOR THE CORNER ON FILE WITH THE RECORDER OF THE COUNTY IN WHICH THE CORNER IS LOCATED.
- B. THE CORNER MONUMENT HAS BEEN REPLACED OR MODIFIED.
- C. THE SURVEYOR IN RESPONSIBLE CHARGE OF THE LAND SURVEYING ACCEPTS A CORNER POSITION THAT DIFFERS FROM THAT SHOWN IN THE PUBLIC RECORDS OF THE COUNTY IN WHICH THE CORNER IS LOCATED.
- D. THE REFERENCE TIES REFERRED TO IN AN EXISTING PUBLIC RECORD NO LONGER EXIST.
- E. EXISTING CORNER TIES UPDATED.

CORNERS TO BE INDEXED

CORNER	SECTION	TOWNSHIP	RANGE
NE CORNER	36	86N	1W
SE CORNER	25	86N	1W
NW CORNER	6	85N	1E
SW CORNER	31	85N	1E

JONES COUNTY ENGINEER'S OFFICE



19501 HWY. 64, ANAMOSA, IOWA 52205
 (319) 462-3785

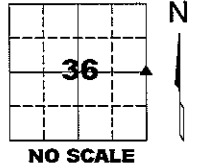
UNITED STATES PUBLIC LAND SURVEY CORNER CERTIFICATE

LAND SURVEY MONUMENTS SITUATED IN SECTION 36, TOWNSHIP 86 NORTH,
 RANGE 1 WEST OF THE 5TH PRINCIPAL MERIDIAN, JONES COUNTY, IOWA.

STATE PLANE COORDINATE
 NAD 83 IOWA NORTH
 N 3552192.36
 E 5625971.46

CORNER SECTION TOWNSHIP RANGE
 E 1/4 CORNER 36 T86N R1W

NE CORNER
 SECTION 36-T86N-R1W
 N: 3554786.77
 E: 5625899.68
 RECORDER'S DOCUMENT
 2010 7777

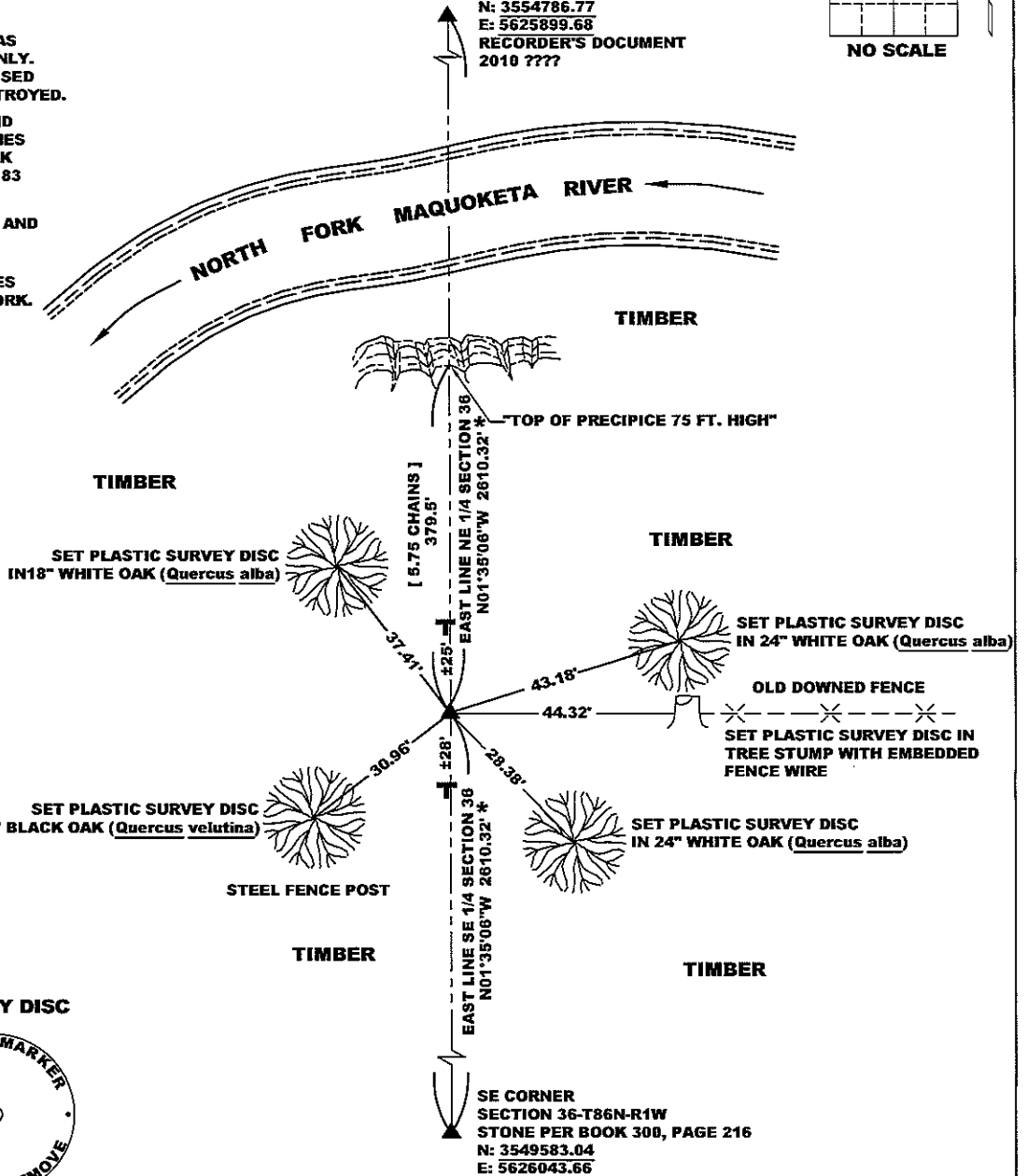


NOTES:

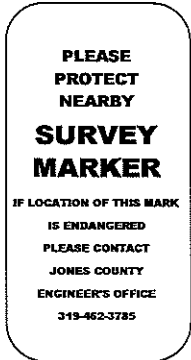
- 1) THE STATE PLANE COORDINATES AS SHOWN ARE FOR CONVENIENCE ONLY. THE TIES AS SHOWN SHOULD BE USED TO REPLACE THE CORNER, IF DESTROYED.
- 2) COORDINATES AS SHOWN ARE GRID COORDINATES AND BASED ON JONES COUNTY G.P.S. CONTROL NETWORK WHICH IN TURN IS BASED ON NAD 83 IOWA NORTH DATUM.
- 3) ALL MEASUREMENTS ARE IN FEET AND DECIMALS THEREOF.
- 4) * GRID DISTANCE, BASED ON JONES COUNTY G.P.S. CONTROL NETWORK.

LEGEND

- OPC ORANGE PLASTIC CAP
 () RECORDED AS
 [] PER ORIGINAL GOVERNMENT SURVEY FIELD NOTES
 T STEEL FENCE POST PAINTED FLUORESCENT PINK



"SURVEY MARKER" SIGN



SURVEY DISC

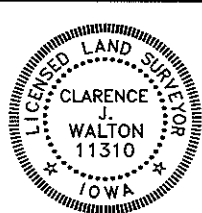


PAGE 3 of 4

PREVIOUSLY RECORDED IN N/A

MONUMENT DESCRIPTION AND HOW ESTABLISHED ORIGINAL GOVERNMENT FIELD NOTES STATE THAT NO POST WAS SET AT THE E 1/4 CORNER AS A 13" WHITE OAK SERVED AS A CORNER TREE. NO SIGN OF TREE COULD BE FOUND EITHER ON SURFACE OR BELOW. 1940 AERIAL PHOTO SHOWS ONLY SMALLER TREES IN THE AREA WHERE THE CORNER TREE WOULD HAVE BEEN. THE GOVERNMENT NOTES ALSO STATE THAT THE CORNER WAS 5.75 CHAINS (379.5 FEET) SOUTH OF THE "TOP OF A PRECIPICE 75 FT. HIGH" (VERBATIM FROM ORIGINAL GOVERNMENT FIELD NOTES. A 5/8" X 24" REBAR WITH AN ORANGE PLASTIC CAP #11310 WAS SET 379.5 FEET SOUTH OF THE TOP OF THE PRECIPICE (THIS POINT IS VERY DEFINITE) AND ON LINE BETWEEN A FOUND FOUND STONE AT THE SE CORNER OF SECTION 36-T86N-R1W AND A FOUND STONE AT THE NE CORNER OF SAID SECTION 36. THE CORNER, SO SET, FELL 7.46 FEET NORTH OF BEING EQUIDISTANT BETWEEN THE 2 FOUND STONES. A STEEL FENCE POST WITH A YELLOW JONES COUNTY "SURVEY MARKER" SIGN WAS SET NEXT TO THE SET SECTION CORNER AS A WITNESS. THERE WERE FLUORESCENT PINK PAINTED STEEL FENCE POSTS AND ANGLE IRONS SET ALONG NEAR THE SECTION LINE FROM THE SOUTH TO THE TOP OF THE LEFT BANK OF THE NORTH FORK OF THE MAQUOKETA RIVER TO THE NORTH. THESE POSTS WERE POSSIBLY SET TO MARK THE SECTION LINE DUE TO RECENT LOGGING ACTIVITY. EXCEPT FOR THE ORIGINAL GOVERNMENT SURVEYS, NO SURVEY RECORDS WERE FOUND TO EXPLAIN HOW THESE POSTS WERE SET.

FIELD BOOK 344, PAGE 68. DATE OF SURVEY: 4/21/10



I hereby certify that this land surveying document and the related survey work was performed by me or under my direct personal supervision and that I am a duly registered Land Surveyor under the laws of the State of Iowa.
 Signed: *Clarence J. Walton* 4/23/10
 Clarence J. Walton, L.S.
 My Registration Renewal Date is December 31, 2011
 Iowa License Number 11310
 Pages or sheets covered by this seal: 1 of 1.

- A. THERE IS NO CERTIFICATE FOR THE CORNER ON FILE WITH THE RECORDER OF THE COUNTY IN WHICH THE CORNER IS LOCATED.
- B. THE CORNER MONUMENT HAS BEEN REPLACED OR MODIFIED.
- C. THE SURVEYOR IN RESPONSIBLE CHARGE OF THE LAND SURVEYING ACCEPTS A CORNER POSITION THAT DIFFERS FROM THAT SHOWN IN THE PUBLIC RECORDS OF THE COUNTY IN WHICH THE CORNER IS LOCATED.
- D. THE REFERENCE TIES REFERRED TO IN AN EXISTING PUBLIC RECORD NO LONGER EXIST.
- E. EXISTING CORNER TIES UPDATED.

CORNERS TO BE INDEXED

CORNER	SECTION	TOWNSHIP	RANGE
E 1/4 CORNER	36	86N	1W
W 1/4 CORNER	31	86N	1E

JONES COUNTY ENGINEER'S OFFICE



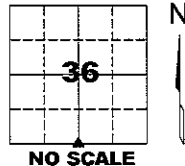
19501 HWY. 64, ANAMOSA, IOWA 52205
 (319) 462-3785

UNITED STATES PUBLIC LAND SURVEY CORNER CERTIFICATE

LAND SURVEY MONUMENTS SITUATED IN SECTION 36, TOWNSHIP 86 NORTH, RANGE 1 WEST OF THE 5TH PRINCIPAL MERIDIAN, JONES COUNTY, IOWA.

STATE PLANE COORDINATE
NAD 83 IOWA NORTH
N 3549485.21
E 5623417.04

CORNER SECTION TOWNSHIP RANGE
S 1/4 CORNER 36 T86N R1W



NOTES:

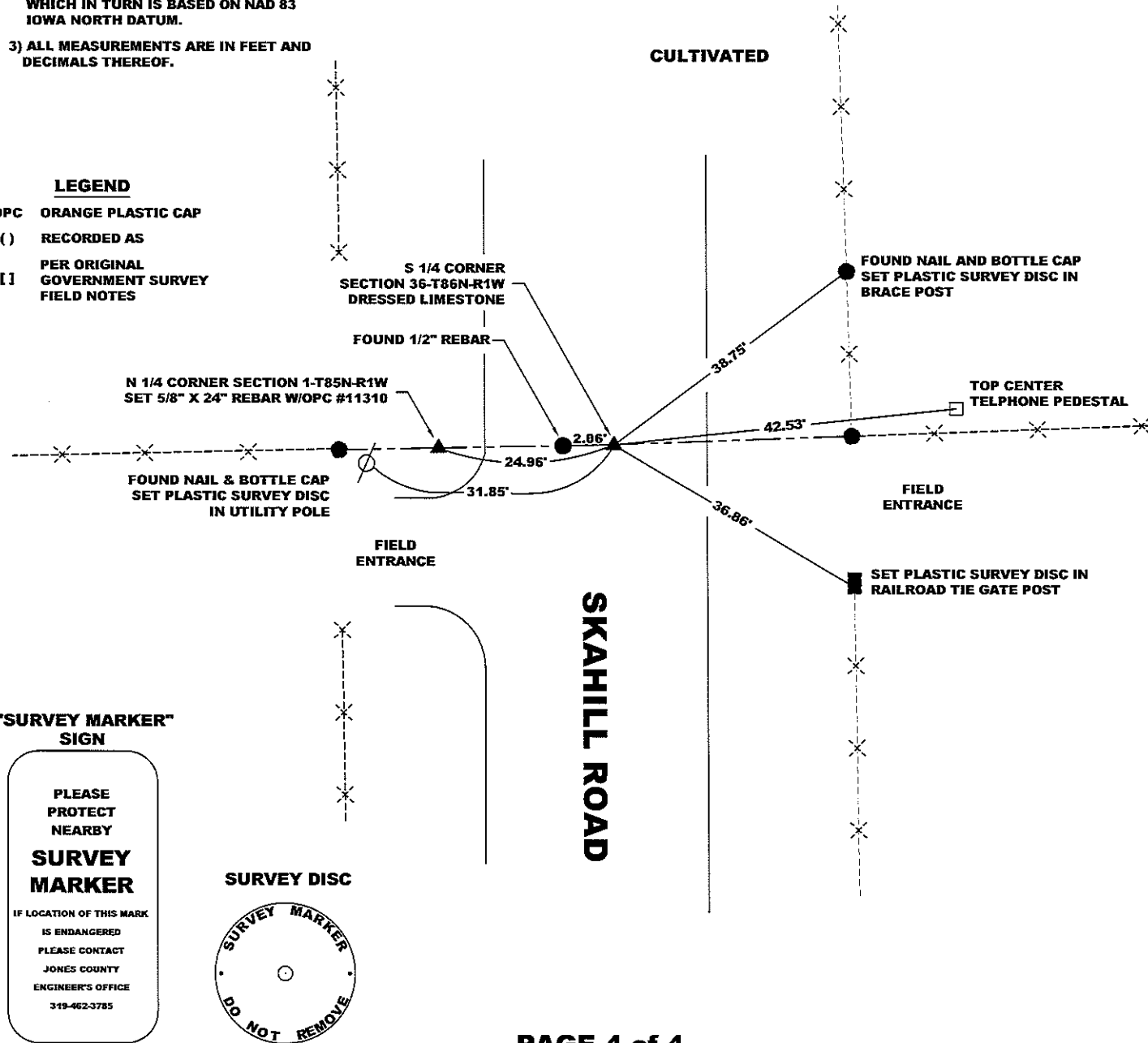
- 1) THE STATE PLANE COORDINATES AS SHOWN ARE FOR CONVENIENCE ONLY. THE TIES AS SHOWN SHOULD BE USED TO REPLACE THE CORNER, IF DESTROYED.
- 2) COORDINATES AS SHOWN ARE GRID COORDINATES AND BASED ON JONES COUNTY G.P.S. CONTROL NETWORK WHICH IN TURN IS BASED ON NAD 83 IOWA NORTH DATUM.
- 3) ALL MEASUREMENTS ARE IN FEET AND DECIMALS THEREOF.

CULTIVATED

CULTIVATED

LEGEND

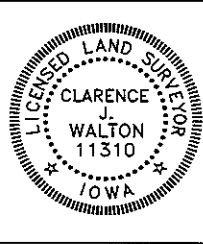
- OPC ORANGE PLASTIC CAP
- () RECORDED AS
- PER ORIGINAL GOVERNMENT SURVEY FIELD NOTES



PAGE 4 of 4

PREVIOUSLY RECORDED IN BOOK 300, PAGE 216, JONES COUNTY RECORDER'S OFFICE.
 MONUMENT DESCRIPTION AND HOW ESTABLISHED FOUND 6"X6"X15" POINTED DRESSED LIMESTONE 19" BELOW PRESENT ROAD SURFACE. STONE IS 2.06' EAST OF EXISTING 1/2" REBAR PER BOOK 300, PAGE 216 IN THE JONES COUNTY, IOWA RECORDER'S OFFICE. SET 5/8" X 24" REBAR AT NORTH AND SOUTH ENDS OF STONE FOR DETECTION PURPOSES. NO SURVEY RECORD SHOW ORIGIN OF THIS STONE.

FIELD BOOK 344, PAGE 78. DATE OF SURVEY: 10/9/09



I hereby certify that this land surveying document and the related survey work was performed by me or under my direct personal supervision and that I am a duly registered Land Surveyor under the laws of the State of Iowa.
 Signed: *Clarence J. Walton* 4/23/10
 Clarence J. Walton, L.S.
 My Registration Renewal Date is December 31, 2011
 Iowa License Number 11310
 Pages or sheets covered by this seal: 1 of 1.

- A. THERE IS NO CERTIFICATE FOR THE CORNER ON FILE WITH THE RECORDER OF THE COUNTY IN WHICH THE CORNER IS LOCATED.
- B. THE CORNER MONUMENT HAS BEEN REPLACED OR MODIFIED.
- C. THE SURVEYOR IN RESPONSIBLE CHARGE OF THE LAND SURVEYING ACCEPTS A CORNER POSITION THAT DIFFERS FROM THAT SHOWN IN THE PUBLIC RECORDS OF THE COUNTY IN WHICH THE CORNER IS LOCATED.
- D. THE REFERENCE TIES REFERRED TO IN AN EXISTING PUBLIC RECORD NO LONGER EXIST.
- E. EXISTING CORNER TIES UPDATED.

CORNERS TO BE INDEXED

CORNER	SECTION	TOWNSHIP	RANGE
S 1/4 CORNER	36	86N	1W

JONES COUNTY ENGINEER'S OFFICE



19501 HWY. 64, ANAMOSA, IOWA 52205
(319) 462-3785