

UNITED STATES PUBLIC LAND SURVEY CORNER CERTIFICATE

Land Survey Monuments situated in Section 20, Township 85N, Range 1W, of the Fifth Principal Meridian, Jones County, Iowa. Previously recorded in N/A in the Office of the County Recorder

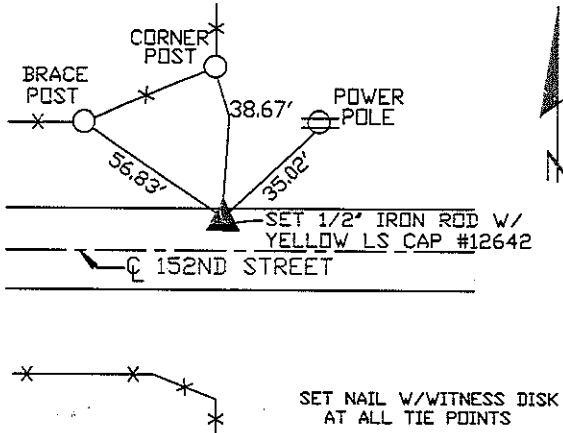
Monument Description and Remarks: (No Corner Certificates found at the County Recorders Office)

NW CORNER SW1/4 SE1/4 - SET 1/2" IRON ROD W/YELLOW LS CAP #12642 - SET ON LINE AND MIDWAY BETWEEN THE S1/4 CORNER AND THE CENTER OF SECTION

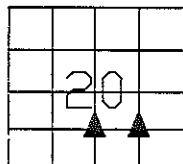
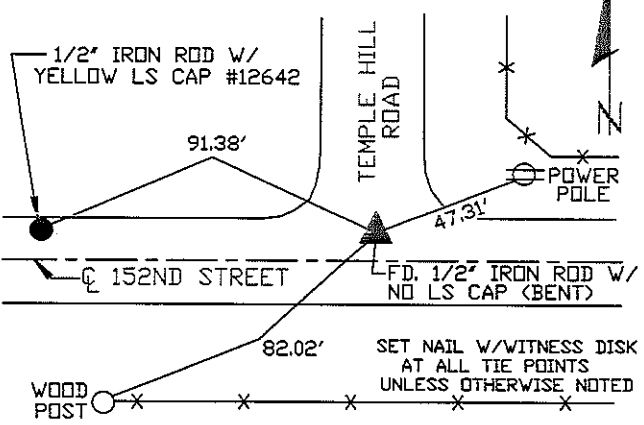
NE CORNER SW1/4 SE1/4 - FOUND 1/2" IRON ROD W/NO LS CAP (BENT)

PLAN VIEW

NW CORNER SW1/4 SE1/4



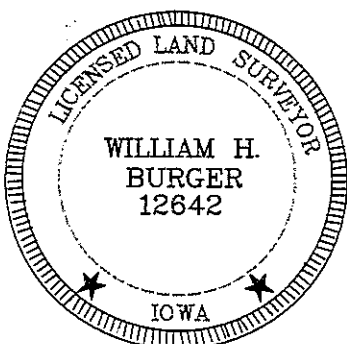
NE CORNER SW1/4 SE1/4



SEC. 20 TWP. 85N RANGE 1W

CORNERS TO BE INDEXED

NW CORNER SW1/4 SE1/4	20	85N	1W
NE CORNER SW1/4 SE1/4	20	85N	1W



I hereby certify that this land surveying document was prepared and related survey work was performed by me or under my direct personal supervision and that I am a duly licensed Land Surveyor under the laws of the State of Iowa.

William H. Burger 10/29/10
 William H. Burger Date

License number 12642
 My license renewal date is December 31, 2010
 Pages or Sheets covered by this seal: Sheet 1 of 1