

05 NOV 10 PM 4:14

STARIE KRUTZFIELD  
 RECORDER 7.00 pd

*CLAY*

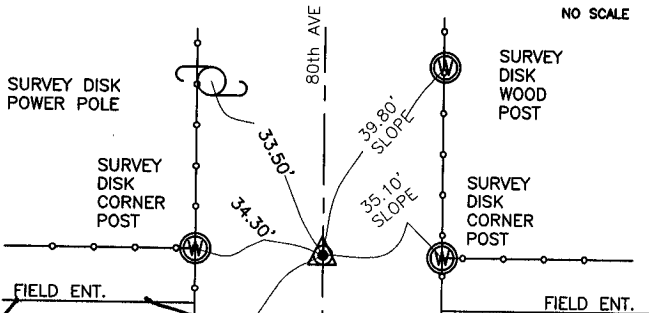
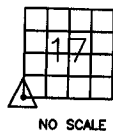
J.D. TJEPKES, LS. 14807, 23428 RIDGE ROAD, ANAMOSA, IOWA, 52205 (319-462-6067)

# UNITED STATES PUBLIC LAND SURVEY CORNER CERTIFICATE

LAND SURVEY MONUMENTS SITUATED IN SECTION 17, TOWNSHIP 85  
 NORTH, RANGE 1 WEST OF THE 5TH P.M., JONES COUNTY, IOWA

### CORNERS TO BE INDEXED

CORNER SECTION TOWNSHIP RANGE  
 SW CORNER 17 85N 1W  
 OFFICE FILE NO. \_\_\_\_\_



FIELD NOTES:  
 10-8-2005  
 MISC. BK  
 2004-2005  
 PAGE 158

FD IRON PIN  
 BURIED 8"  
 SW COR.  
 17-85-1

*NE-19-85-1*

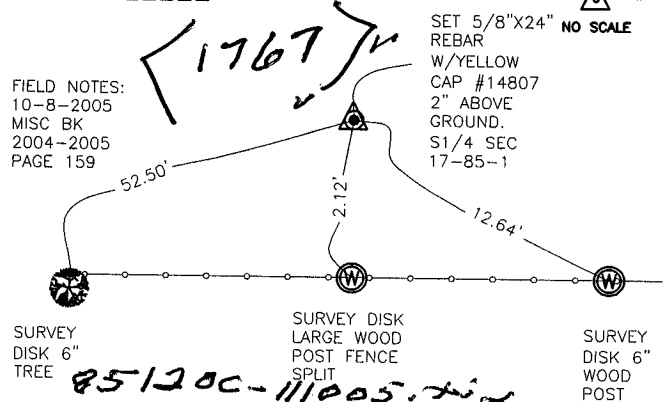
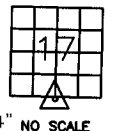
*8519e-111005.tie*

PREVIOUSLY RECORDED IN BOOK NA, PAGE NA  
 MONUMENT DESCRIPTION AND HOW ESTABLISHED \_\_\_\_\_

FOUND IRON PIN BURIED 8" IN CENTERLINE ROAD AND ON LINE WITH EAST-WEST FENCE LINES. NO TIES ON RECORD. TIES AS INDICATED FOR SOUTHWEST CORNER SECTION 17 T85N R1W.

### CORNERS TO BE INDEXED

CORNER SECTION TOWNSHIP RANGE  
 S1/4 COR. 17 85N 1W  
 OFFICE FILE NO. \_\_\_\_\_



FIELD NOTES:  
 10-8-2005  
 MISC BK  
 2004-2005  
 PAGE 159

SET 5/8"x24" REBAR W/YELLOW CAP #14807 2" ABOVE GROUND. S1/4 SEC 17-85-1

SURVEY DISK 6" TREE

*85120c-111005.tie*

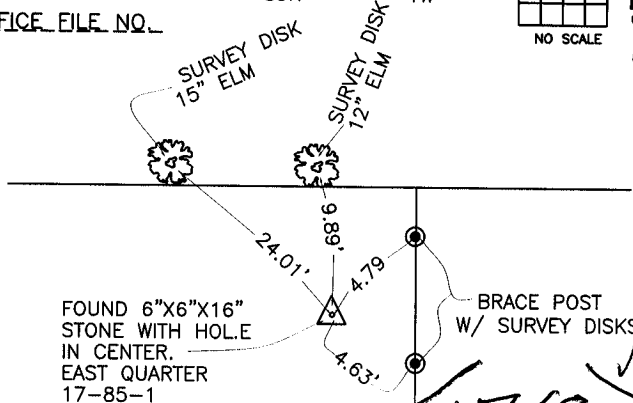
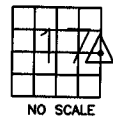
*N 1/4-20-85-1*

PREVIOUSLY RECORDED IN BOOK NA, PAGE NA  
 MONUMENT DESCRIPTION AND HOW ESTABLISHED \_\_\_\_\_

PER PHYSICAL EVIDENCE ALONG EAST-WEST FENCE LINE AT FOUND FENCE SPLIT AND ON LINE BETWEEN FD. PIN AT SW CORNER 17 AND FD PIN ON NORTH-SOUTH TEMPLE HILL ROAD. TIES AS INDICATED FOR S1/4 CORNER SECTION 17 T85N R1W.

### CORNERS TO BE INDEXED

CORNER SECTION TOWNSHIP RANGE  
 E-QUARTER 17 85N 1W  
 OFFICE FILE NO. \_\_\_\_\_



FOUND 6"x6"x16" STONE WITH HOLE IN CENTER. EAST QUARTER 17-85-1

PASTURE

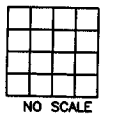
*1768*

*85117e-111005.tie*

PREVIOUSLY RECORDED IN BOOK \_\_\_\_\_, PAGE \_\_\_\_\_

### CORNERS TO BE INDEXED

CORNER SECTION TOWNSHIP RANGE  
 OFFICE FILE NO. \_\_\_\_\_



PREVIOUSLY RECORDED IN BOOK \_\_\_\_\_, PAGE \_\_\_\_\_