

2000 3866

FILED  
RECORDERS OFFICE  
JONES COUNTY IOWA

00 DEC 20 AM 11:00

MARIE KRUTZFIELD  
RECORDER 6.00Pd

STEPHEN MICHAEL BRAIN, BRAIN ENGINEERING, INC., 777 10TH STREET, MARION, IOWA 52302 PH. (319) 373-1318

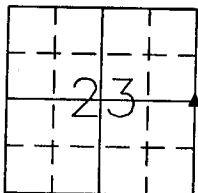
# UNITED STATES PUBLIC LAND SURVEY CORNER CERTIFICATE

LAND SURVEY MONUMENTS SITUATED IN SECTION 23, TOWNSHIP 85 NORTH  
RANGE 1 WEST OF THE 5TH P.M., JONES COUNTY, IOWA.

NO SCALE



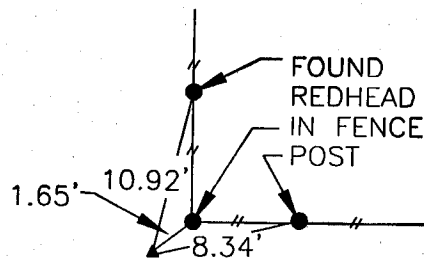
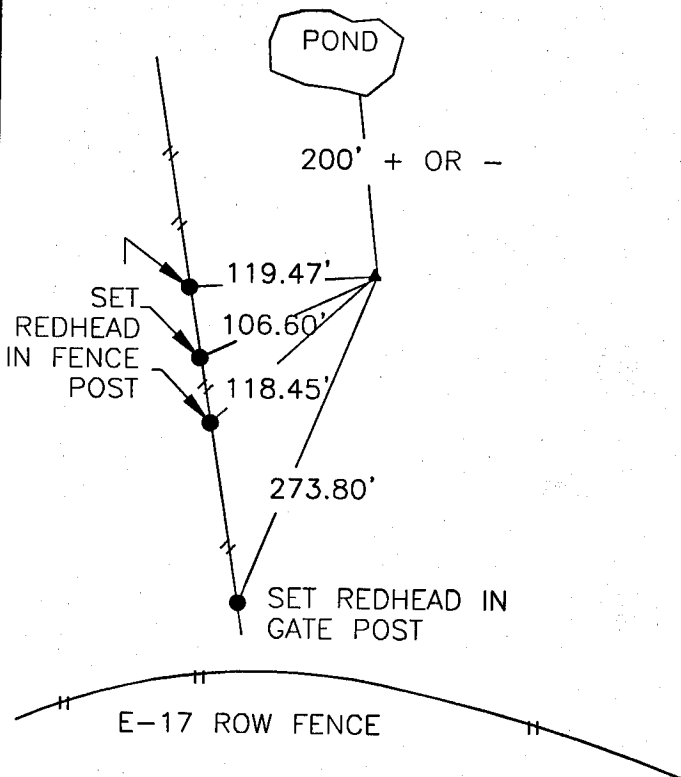
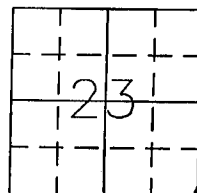
E 1/4



NO SCALE

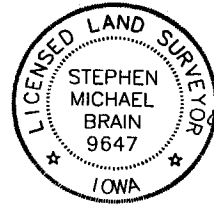


SE CORNER



PREVIOUSLY RECORDED IN BOOK \_\_\_\_\_ PAGE \_\_\_\_\_  
MONUMENT DESCRIPTION AND HOW ESTABLISHED \_\_\_\_\_  
SET 1/2" REBAR #9647 BASED ON EXTENSION  
OF FENCES; 12" BELOW GROUND SURFACE.  
NO TIES ON FILE.

PREVIOUSLY RECORDED IN BOOK \_\_\_\_\_ PAGE \_\_\_\_\_  
MONUMENT DESCRIPTION AND HOW ESTABLISHED \_\_\_\_\_  
FOUND 5/8" REBAR WITH ORANGE CAP. NO TIES  
ON FILE.



I hereby certify that this land surveying document and the related survey work was performed by me or under my direct personal supervision and that I am a duly licensed Land Surveyor under the laws of the State of Iowa.

Signed *[Signature]* Date 12/18/00  
Stephen Michael Brain, L.S.  
My License Renewal Date is December 31, 2000  
License Number 9647  
Pages or sheets covered by this seal: 1/1

CORNERS TO BE INDEXED			
CORNER	SECTION	TOWNSHIP	RANGE
E 1/4	23	T85N	R1W
SE CORNER	23	T85N	R1W

**BRAIN ENGINEERING, INC.**

777 10TH STREET  
MARION, IOWA 52302 21360-20  
(319) 373-1318