

2000 3867

FILED  
RECORDERS OFFICE  
JONES COUNTY IOWA

00 DEC 20 AM 11:01

MARIE KRUTZFIELD  
RECORDER 6.00 Pd

STEPHEN MICHAEL BRAIN, BRAIN ENGINEERING, INC., 777 10TH STREET, MARION, IOWA 52302 PH. (319) 373-1318

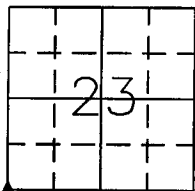
# UNITED STATES PUBLIC LAND SURVEY CORNER CERTIFICATE

LAND SURVEY MONUMENTS SITUATED IN SECTION 23, TOWNSHIP 85 NORTH  
RANGE 1 WEST OF THE 5TH P.M., JONES COUNTY, IOWA.

NO SCALE



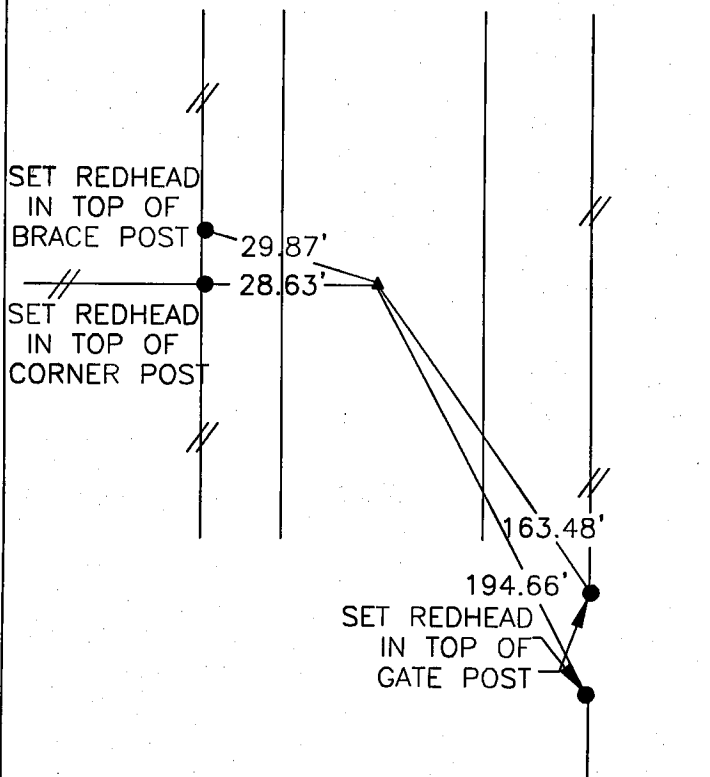
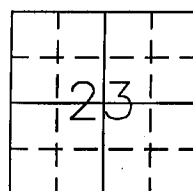
SW CORNER



NO SCALE



SE CORNER



PREVIOUSLY RECORDED IN BOOK \_\_\_\_\_ PAGE \_\_\_\_\_

MONUMENT DESCRIPTION AND HOW ESTABLISHED \_\_\_\_\_

SET 1/2" REBAR WITH YELLOW CAP #9647

3" BELOW ROAD. NO TIES ON FILE.

PREVIOUSLY RECORDED IN BOOK \_\_\_\_\_ PAGE \_\_\_\_\_

MONUMENT DESCRIPTION AND HOW ESTABLISHED \_\_\_\_\_



I hereby certify that this land surveying document and the related survey work was performed by me or under my direct personal supervision and that I am a duly licensed Land Surveyor under the laws of the State of Iowa.

Signature: *[Signature]* Date: 12/18/00

Stephen Michael Brain, L.S.  
My License Renewal Date is December 31, 2000  
License Number 9647  
Pages or sheets covered by this seal: 1/1

CORNERS TO BE INDEXED

CORNER SECTION TOWNSHIP RANGE  
SW CORNER 23 T85N R1W

**BRAIN ENGINEERING, INC.**

777 10TH STREET  
MARION, IOWA 52302 21360-20  
(319) 373-1318