

COPY

Jones County
 Marie Krutzfield, Recorder
 Fee Book 2010 1209
 05/14/2010 @0128PM
 ZSC SEC COR CERT
 Book: Page: # Pages: 3
 Total Fees: \$0.00

PREPARED BY
 CLARENCE J. WALTON, JONES COUNTY ENGINEER'S OFFICE, 19501 HWY. 64, ANAMOSA, IOWA, 52205 (319) 462-3785

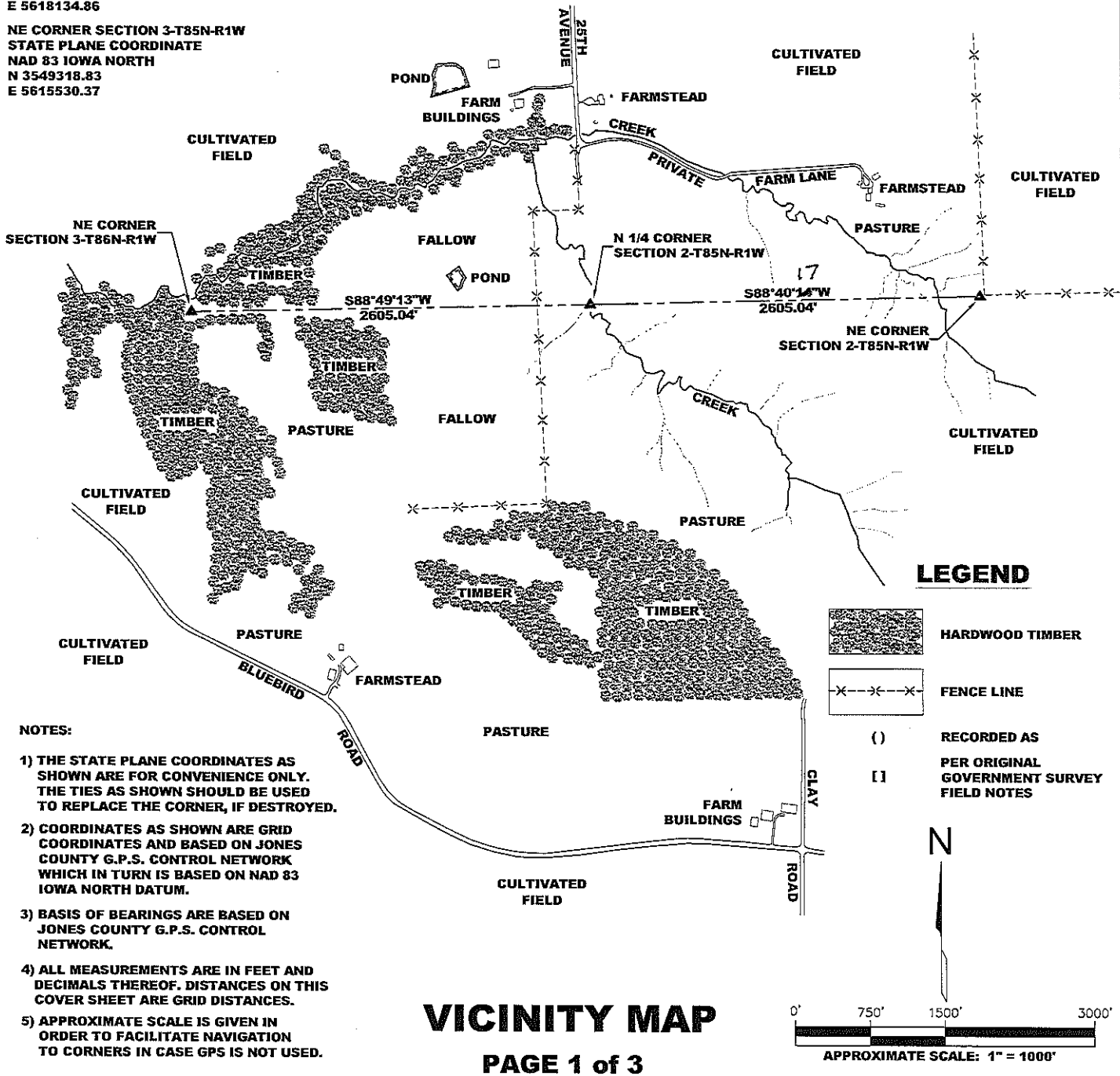
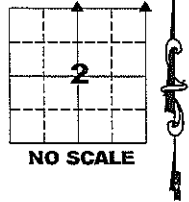
COVER SHEET
UNITED STATES PUBLIC LAND SURVEY CORNER CERTIFICATE
LAND SURVEY MONUMENTS SITUATED IN SECTION 2, TOWNSHIP 85 NORTH,
RANGE 1 WEST OF THE 5TH PRINCIPAL MERIDIAN, JONES COUNTY, IOWA.

NE CORNER SECTION 2-T85N-R1W
 STATE PLANE COORDINATE
 NAD 83 IOWA NORTH
 N 3549432.86
 E 5620739.19

N 1/4 CORNER SECTION 2-T85N-R1W
 STATE PLANE COORDINATE
 NAD 83 IOWA NORTH
 N 3549372.46
 E 5618134.86

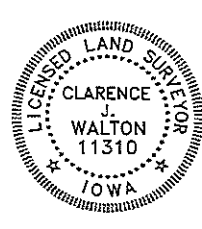
NE CORNER SECTION 3-T85N-R1W
 STATE PLANE COORDINATE
 NAD 83 IOWA NORTH
 N 3549318.83
 E 5615530.37

SECTION 2 TOWNSHIP T85N RANGE R1W



- NOTES:
- 1) THE STATE PLANE COORDINATES AS SHOWN ARE FOR CONVENIENCE ONLY. THE TIES AS SHOWN SHOULD BE USED TO REPLACE THE CORNER, IF DESTROYED.
 - 2) COORDINATES AS SHOWN ARE GRID COORDINATES AND BASED ON JONES COUNTY G.P.S. CONTROL NETWORK WHICH IN TURN IS BASED ON NAD 83 IOWA NORTH DATUM.
 - 3) BASIS OF BEARINGS ARE BASED ON JONES COUNTY G.P.S. CONTROL NETWORK.
 - 4) ALL MEASUREMENTS ARE IN FEET AND DECIMALS THEREOF. DISTANCES ON THIS COVER SHEET ARE GRID DISTANCES.
 - 5) APPROXIMATE SCALE IS GIVEN IN ORDER TO FACILITATE NAVIGATION TO CORNERS IN CASE GPS IS NOT USED.

VICINITY MAP
 PAGE 1 of 3



I hereby certify that this land surveying document and the related survey work was performed by me or under my direct personal supervision and that I am a duly registered Land Surveyor under the laws of the State of Iowa.
 Signed:
Clarence J. Walton 5/14/10
 Clarence J. Walton, L.S.
 My Registration Renewal Date is December 31, 2011
 Iowa License Number 11310
 Pages or sheets covered by this seal: 1 of 1.

JONES COUNTY ENGINEER'S OFFICE

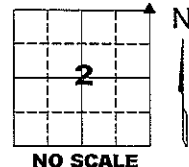
19501 HWY. 64, ANAMOSA, IOWA 52205
 (319) 462-3785

UNITED STATES PUBLIC LAND SURVEY CORNER CERTIFICATE

LAND SURVEY MONUMENTS SITUATED IN SECTION 2, TOWNSHIP 85 NORTH,
 RANGE 1 WEST OF THE 5TH PRINCIPAL MERIDIAN, JONES COUNTY, IOWA.

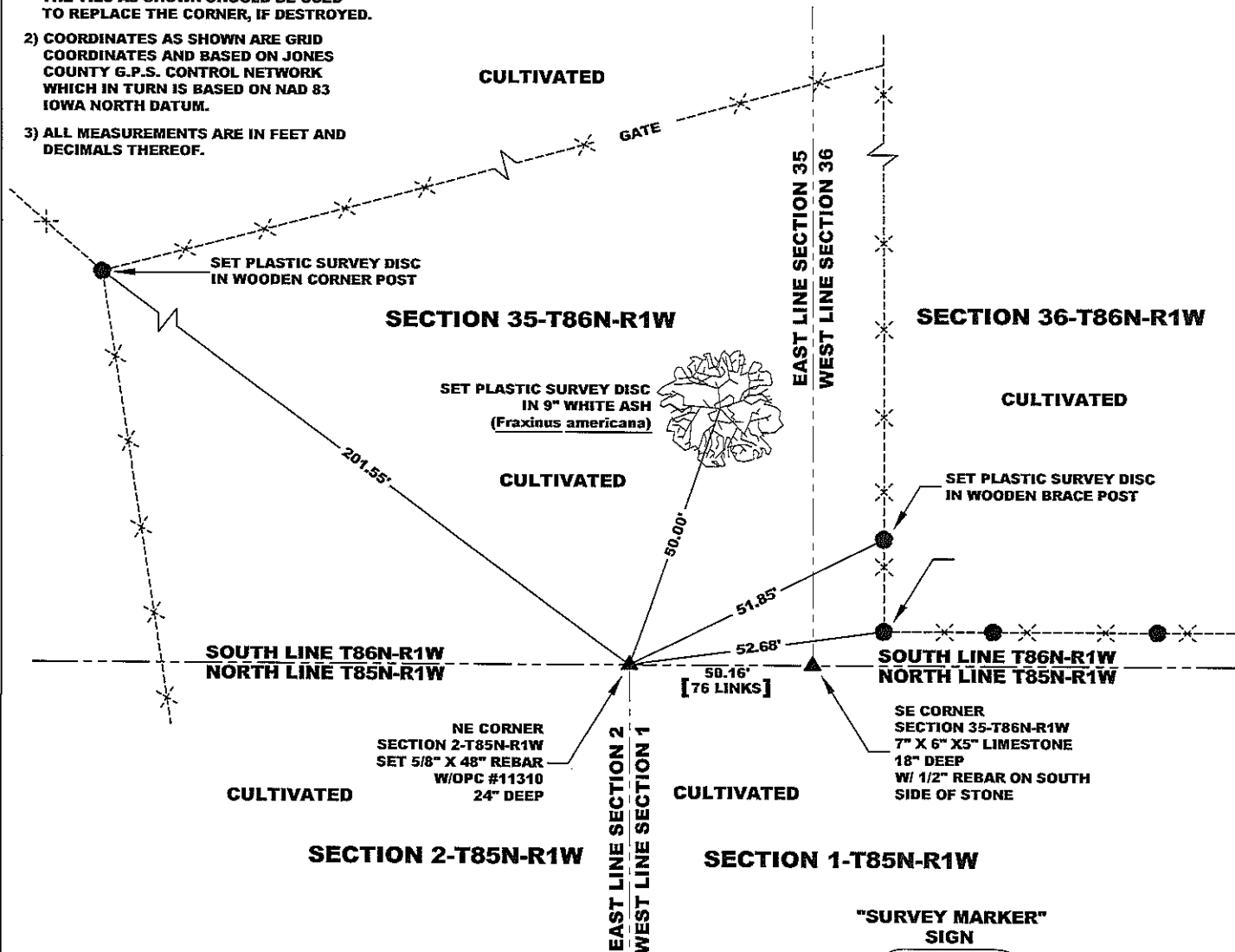
STATE PLANE COORDINATE
 NAD 83 IOWA NORTH
 N 3549432.86
 E 5620739.19

CORNER SECTION TOWNSHIP RANGE
 NE CORNER 2 T85N R1W



NOTES:

- 1) THE STATE PLANE COORDINATES AS SHOWN ARE FOR CONVENIENCE ONLY. THE TIES AS SHOWN SHOULD BE USED TO REPLACE THE CORNER, IF DESTROYED.
- 2) COORDINATES AS SHOWN ARE GRID COORDINATES AND BASED ON JONES COUNTY G.P.S. CONTROL NETWORK WHICH IN TURN IS BASED ON NAD 83 IOWA NORTH DATUM.
- 3) ALL MEASUREMENTS ARE IN FEET AND DECIMALS THEREOF.



LEGEND

- OPC ORANGE PLASTIC CAP
- () RECORDED MEASUREMENT
- PER ORIGINAL GOVERNMENT SURVEY FIELD NOTES
- []

"SURVEY MARKER" SIGN

PLEASE PROTECT NEARBY
SURVEY MARKER
 IF LOCATION OF THIS MARK IS ENDANGERED PLEASE CONTACT JONES COUNTY ENGINEER'S OFFICE
 319-462-3785

SURVEY DISC



PAGE 2 of 3

PREVIOUSLY RECORDED IN N/A

MONUMENT DESCRIPTION AND HOW ESTABLISHED SET 5/8" X 48" REBAR WITH ORANGE PLASTIC CAP #11310, 24" BELOW PRESENT GROUND SURFACE AT 50.16 FEET (76 LINKS) PER ORIGINAL GOVERNMENT SURVEY FIELD NOTES AND ON LINE BETWEEN FOUND STONES AT THE SE CORNER OF SECTION 35-T86N-R1W AND THE SOUTH 1/4 CORNER OF SAID SECTION 35.

FIELD BOOK 344, PAGE 66. DATE OF SURVEY: 5/5/10



I hereby certify that this land surveying document and the related survey work was performed by me or under my direct personal supervision and that I am a duly registered Land Surveyor under the laws of the State of Iowa.
 Signed: *Clarence J. Walton* 5/14/10
 Clarence J. Walton, L.S.
 My Registration Renewal Date is December 31, 2011
 Iowa License Number 11310
 Pages or sheets covered by this seal: 1 of 1.

- A. THERE IS NO CERTIFICATE FOR THE CORNER ON FILE WITH THE RECORDER OF THE COUNTY IN WHICH THE CORNER IS LOCATED.
- B. THE CORNER MONUMENT HAS BEEN REPLACED OR MODIFIED.
- C. THE SURVEYOR IN RESPONSIBLE CHARGE OF THE LAND SURVEYING ACCEPTS A CORNER POSITION THAT DIFFERS FROM THAT SHOWN IN THE PUBLIC RECORDS OF THE COUNTY IN WHICH THE CORNER IS LOCATED.
- D. THE REFERENCE TIES REFERRED TO IN AN EXISTING PUBLIC RECORD NO LONGER EXIST.
- E. EXISTING CORNER TIES UPDATED.

CORNERS TO BE INDEXED

CORNER	SECTION	TOWNSHIP	RANGE
NE CORNER	2	85N	1W
NW CORNER	1	85N	1W

JONES COUNTY ENGINEER'S OFFICE



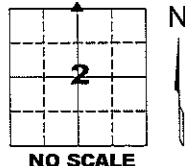
19501 HWY. 64, ANAMOSA, IOWA 52205
 (319) 462-3785

UNITED STATES PUBLIC LAND SURVEY CORNER CERTIFICATE

LAND SURVEY MONUMENTS SITUATED IN SECTION 2, TOWNSHIP 85 NORTH, RANGE 1 WEST OF THE 5TH PRINCIPAL MERIDIAN, JONES COUNTY, IOWA.

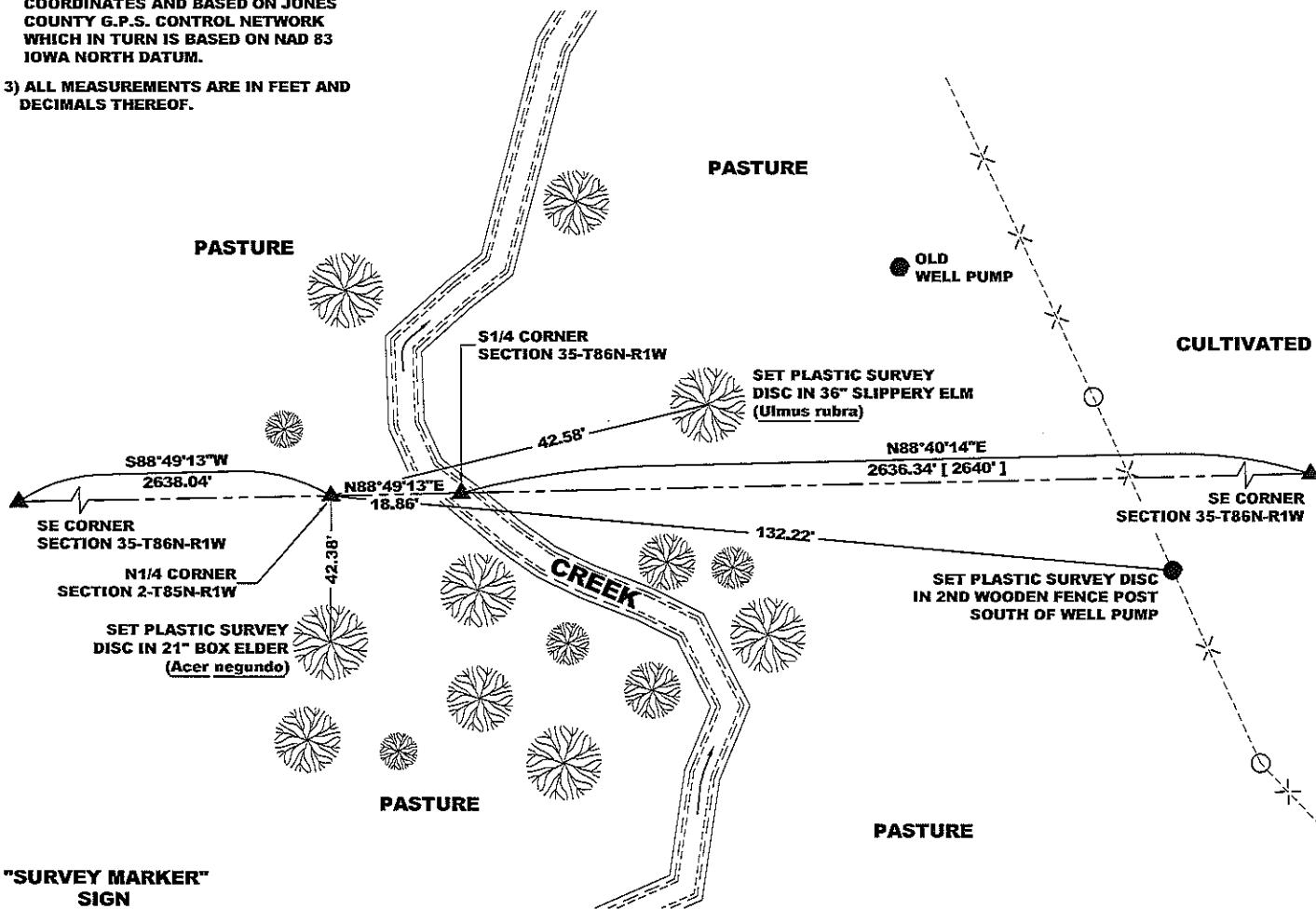
STATE PLANE COORDINATE
NAD 83 IOWA NORTH
N 3549372.46
E 5618134.86

CORNER SECTION TOWNSHIP RANGE
N 1/4 CORNER 2 T85N R1W



NOTES:

- 1) THE STATE PLANE COORDINATES AS SHOWN ARE FOR CONVENIENCE ONLY. THE TIES AS SHOWN SHOULD BE USED TO REPLACE THE CORNER, IF DESTROYED.
- 2) COORDINATES AS SHOWN ARE GRID COORDINATES AND BASED ON JONES COUNTY G.P.S. CONTROL NETWORK WHICH IN TURN IS BASED ON NAD 83 IOWA NORTH DATUM.
- 3) ALL MEASUREMENTS ARE IN FEET AND DECIMALS THEREOF.



"SURVEY MARKER" SIGN



SURVEY DISC



LEGEND

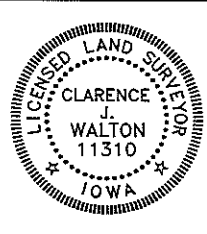
- OPC ORANGE PLASTIC CAP
- () RECORDED MEASUREMENT
- PER ORIGINAL GOVERNMENT SURVEY FIELD NOTES

PAGE 3 of 3

PREVIOUSLY RECORDED IN N/A

MONUMENT DESCRIPTION AND HOW ESTABLISHED SET 5/8" X 48" REBAR WITH ORANGE PLASTIC CAP # 11310 FLUSH WITH PRESENT SURFACE EQUIDISTANT BETWEEN THE NW AND NE CORNERS OF SECTION 2-T85N-R1W AND ON LINE WITH THE S 1/4 CORNER OF SECTION 35-T86N-R1W. SET A STEEL FENCE POST WITH A YELLOW "SURVEY MARKER" SIGN AS A WITNESS TO THIS CORNER.

FIELD BOOK 344, PAGES 66 & 73. DATE OF SURVEY: 4/30/10



I hereby certify that this land surveying document and the related survey work was performed by me or under my direct personal supervision and that I am a duly registered Land Surveyor under the laws of the State of Iowa.

Signed: *Clarence J. Walton* 5/14/10
Clarence J. Walton, L.S.
My Registration Renewal Date is December 31, 2011
Iowa License Number 11310
Pages or sheets covered by this seal: 1 of 1.

- A. THERE IS NO CERTIFICATE FOR THE CORNER ON FILE WITH THE RECORDER OF THE COUNTY IN WHICH THE CORNER IS LOCATED.
- B. THE CORNER MONUMENT HAS BEEN REPLACED OR MODIFIED.
- C. THE SURVEYOR IN RESPONSIBLE CHARGE OF THE LAND SURVEYING ACCEPTS A CORNER POSITION THAT DIFFERS FROM THAT SHOWN IN THE PUBLIC RECORDS OF THE COUNTY IN WHICH THE CORNER IS LOCATED.
- D. THE REFERENCE TIES REFERRED TO IN AN EXISTING PUBLIC RECORD NO LONGER EXIST.
- E. EXISTING CORNER TIES UPDATED.

CORNERS TO BE INDEXED

CORNER	SECTION	TOWNSHIP	RANGE
N 1/4 CORNER	2	85N	1W

JONES COUNTY ENGINEER'S OFFICE



19501 HWY. 64, ANAMOSA, IOWA 52205
(319) 462-3785

COPY

Jones County
 Marie Krutzfield, Recorder
 Fee Book 2010 1210
 05/14/2010 @0131PM
 ZSC SEC COR CERT
 Book: Page: # Pages: 4
 Total Fees: \$0.00

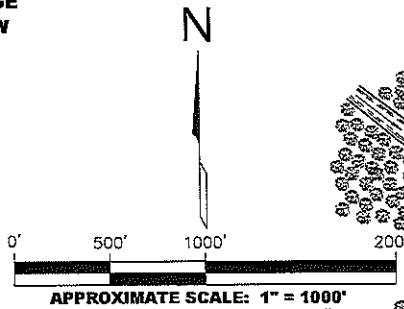
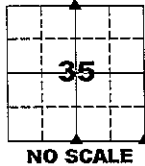
PREPARED BY
 CLARENCE J. WALTON, JONES COUNTY ENGINEER'S OFFICE, 19501 HWY. 64, ANAMOSA, IOWA, 52205 (319) 462-3785

COVER SHEET
 UNITED STATES PUBLIC LAND SURVEY CORNER CERTIFICATE
 LAND SURVEY MONUMENTS SITUATED IN SECTION 35, TOWNSHIP 86 NORTH,
 RANGE 1 WEST OF THE 5TH PRINCIPAL MERIDIAN, JONES COUNTY, IOWA.

NOTES:

- 1) THE STATE PLANE COORDINATES AS SHOWN ARE FOR CONVENIENCE ONLY. THE TIES AS SHOWN SHOULD BE USED TO REPLACE THE CORNER, IF DESTROYED.
- 2) COORDINATES AS SHOWN ARE GRID COORDINATES AND BASED ON JONES COUNTY G.P.S. CONTROL NETWORK WHICH IN TURN IS BASED ON NAD 83 IOWA NORTH DATUM.
- 3) BASIS OF BEARINGS ARE BASED ON JONES COUNTY G.P.S. CONTROL NETWORK.
- 4) ALL MEASUREMENTS ARE IN FEET AND DECIMALS THEREOF. DISTANCES ON THIS COVER SHEET ARE GRID DISTANCES.
- 5) APPROXIMATE SCALE IS GIVEN IN ORDER TO FACILITATE NAVIGATION TO CORNERS IN CASE GPS IS NOT USED.

SECTION TOWNSHIP RANGE
 35 T86N R1W

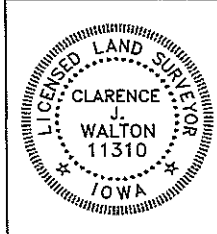
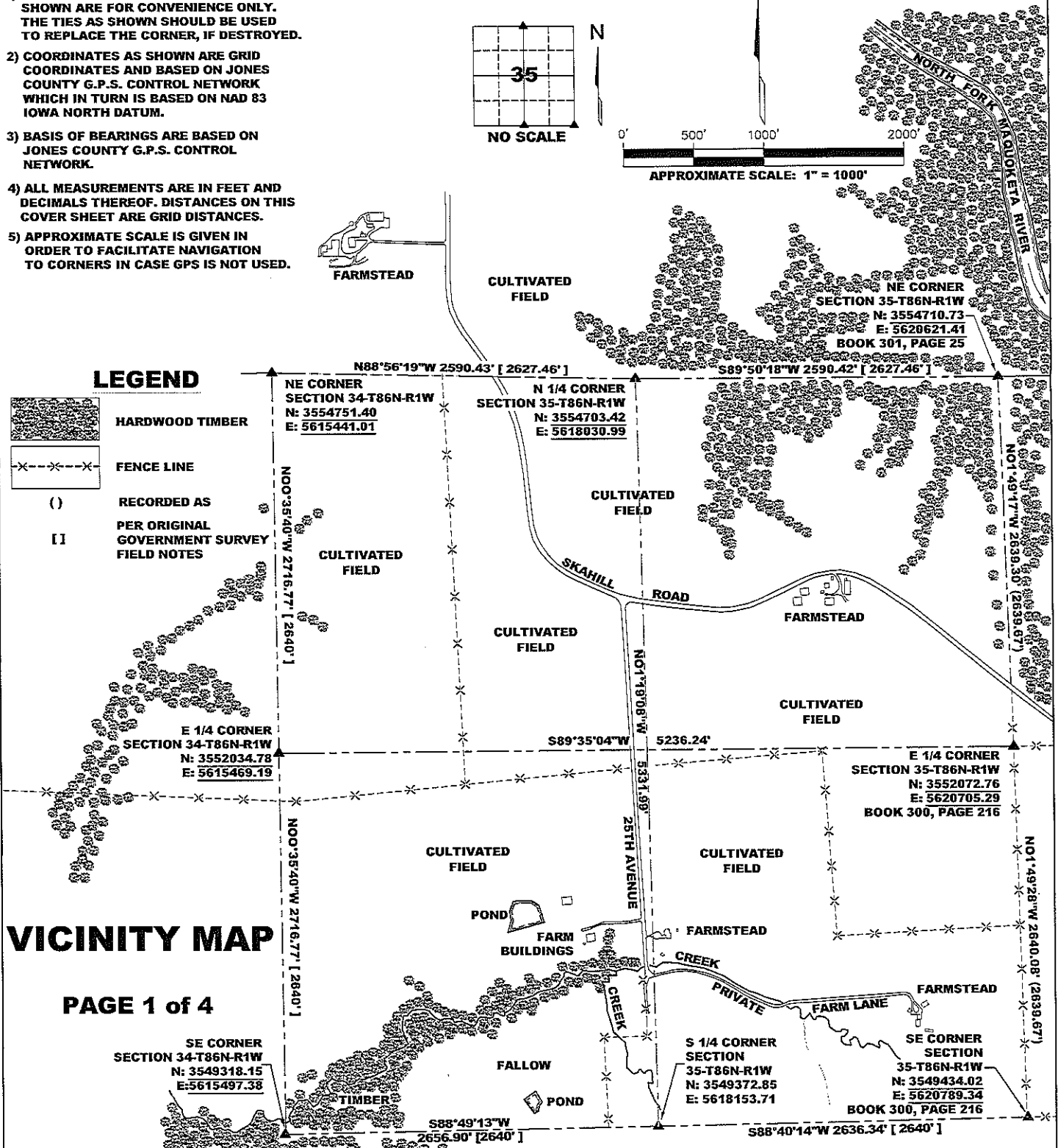


LEGEND

- HARDWOOD TIMBER
- FENCE LINE
- RECORDED AS
- PER ORIGINAL GOVERNMENT SURVEY FIELD NOTES

VICINITY MAP

PAGE 1 of 4



I hereby certify that this land surveying document and the related survey work was performed by me or under my direct personal supervision and that I am a duly registered Land Surveyor under the laws of the State of Iowa.
 Signed: *Clarence J. Walton* 5/14/10
 Clarence J. Walton, L.S.
 My Registration Renewal Date is December 31, 2011
 Iowa License Number 11310
 Pages or sheets covered by this seal: 1 of 1.

JONES COUNTY ENGINEER'S OFFICE



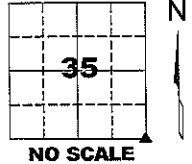
19501 HWY. 64, ANAMOSA, IOWA 52205
 (319) 462-3785

UNITED STATES PUBLIC LAND SURVEY CORNER CERTIFICATE

LAND SURVEY MONUMENTS SITUATED IN SECTION 35, TOWNSHIP 86 NORTH, RANGE 1 WEST OF THE 5TH PRINCIPAL MERIDIAN, JONES COUNTY, IOWA.

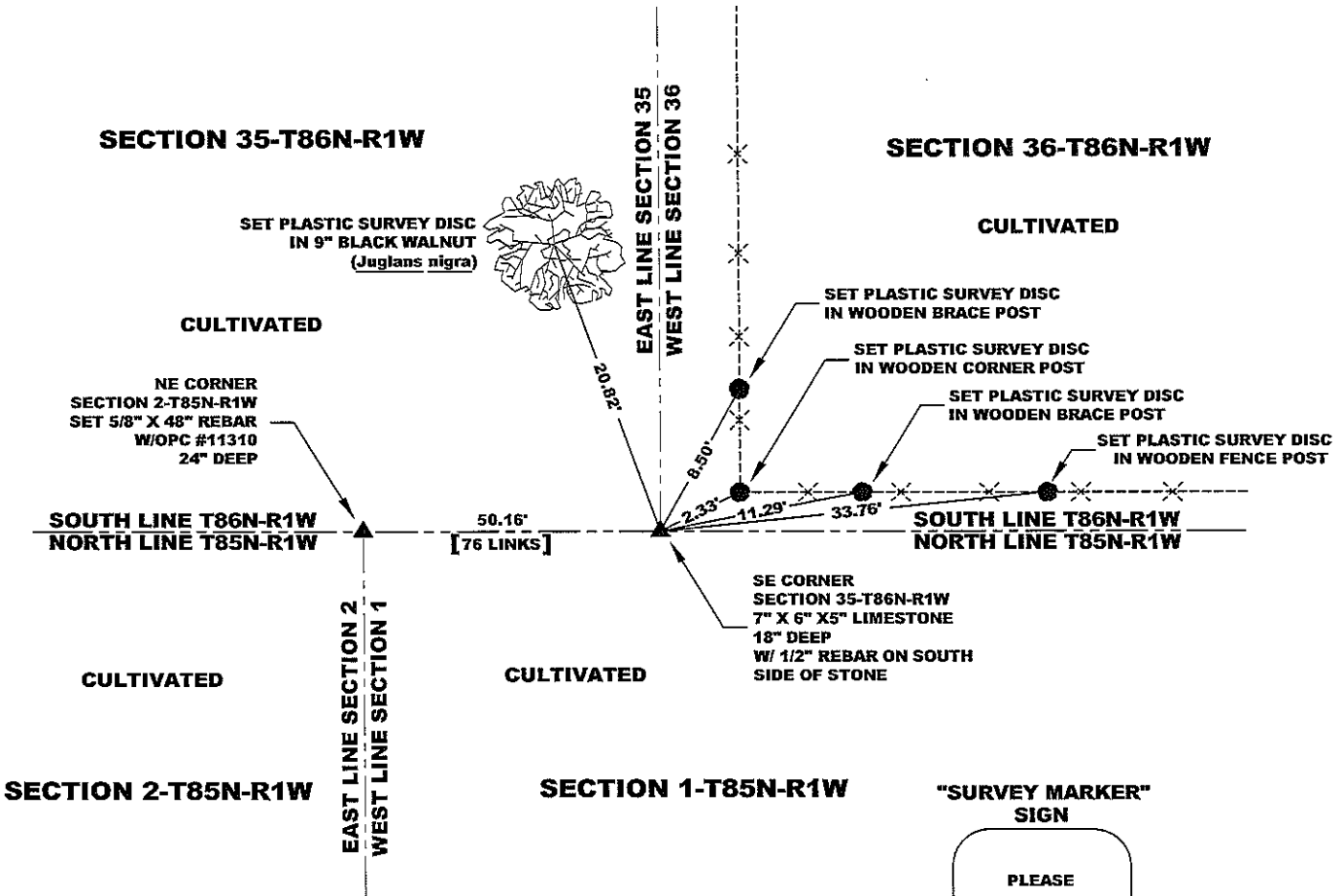
STATE PLANE COORDINATE
NAD 83 IOWA NORTH
N 3549434.02
E 5620789.34

CORNER SECTION TOWNSHIP RANGE
SE CORNER 35 T86N R1W



NOTES:

- 1) THE STATE PLANE COORDINATES AS SHOWN ARE FOR CONVENIENCE ONLY. THE TIES AS SHOWN SHOULD BE USED TO REPLACE THE CORNER, IF DESTROYED.
- 2) COORDINATES AS SHOWN ARE GRID COORDINATES AND BASED ON JONES COUNTY G.P.S. CONTROL NETWORK WHICH IN TURN IS BASED ON NAD 83 IOWA NORTH DATUM.
- 3) ALL MEASUREMENTS ARE IN FEET AND DECIMALS THEREOF.



LEGEND

- OPC ORANGE PLASTIC CAP
- () RECORDED MEASUREMENT
- PER ORIGINAL
- [] GOVERNMENT SURVEY FIELD NOTES

"SURVEY MARKER" SIGN

PLEASE PROTECT NEARBY SURVEY MARKER

IF LOCATION OF THIS MARK IS ENDANGERED PLEASE CONTACT JONES COUNTY ENGINEER'S OFFICE 319-462-3785

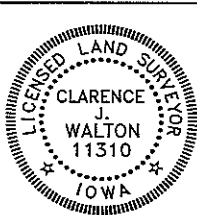


PAGE 2 of 4

PREVIOUSLY RECORDED IN BOOK 300, PAGE 216.

MONUMENT DESCRIPTION AND HOW ESTABLISHED FOUND 7" X 6" X 5" LIMESTONE 18" BELOW PRESENT GROUND SURFACE WITH 1/2" REBAR ON SOUTH SIDE OF STONE PER TIES OF RECORD. BURIED PERMANENT MAGNET ATOP STONE AND MAGNETIZED THE EXISTING REBAR. SET YELLOW "SURVEY MARKER" SIGN ON CORNER POST IMMEDIATELY TO THE NORTHEAST OF THE STONE.

FIELD BOOK 344, PAGE 66. DATE OF SURVEY: 5/5/10



I hereby certify that this land surveying document and the related survey work was performed by me or under my direct personal supervision and that I am a duly registered Land Surveyor under the laws of the State of Iowa.

Signed: *Clarence J. Walton* 5/14/10
Clarence J. Walton, L.S.
My Registration Renewal Date is December 31, 2011
Iowa License Number 11310
Pages or sheets covered by this seal: 1 of 1.

- A. THERE IS NO CERTIFICATE FOR THE CORNER ON FILE WITH THE RECORDER OF THE COUNTY IN WHICH THE CORNER IS LOCATED.
- B. THE CORNER MONUMENT HAS BEEN REPLACED OR MODIFIED.
- C. THE SURVEYOR IN RESPONSIBLE CHARGE OF THE LAND SURVEYING ACCEPTS A CORNER POSITION THAT DIFFERS FROM THAT SHOWN IN THE PUBLIC RECORDS OF THE COUNTY IN WHICH THE CORNER IS LOCATED.
- D. THE REFERENCE TIES REFERRED TO IN AN EXISTING PUBLIC RECORD NO LONGER EXIST.
- E. EXISTING CORNER TIES UPDATED.

CORNERS TO BE INDEXED

CORNER	SECTION	TOWNSHIP	RANGE
SE CORNER	35	86N	1W
SW CORNER	36	86N	1W

JONES COUNTY ENGINEER'S OFFICE



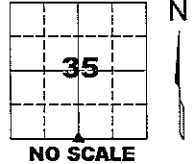
19501 HWY. 64, ANAMOSA, IOWA 52205
(319) 462-3785

UNITED STATES PUBLIC LAND SURVEY CORNER CERTIFICATE

LAND SURVEY MONUMENTS SITUATED IN SECTION 35, TOWNSHIP 86 NORTH,
 RANGE 1 WEST OF THE 5TH PRINCIPAL MERIDIAN, JONES COUNTY, IOWA.

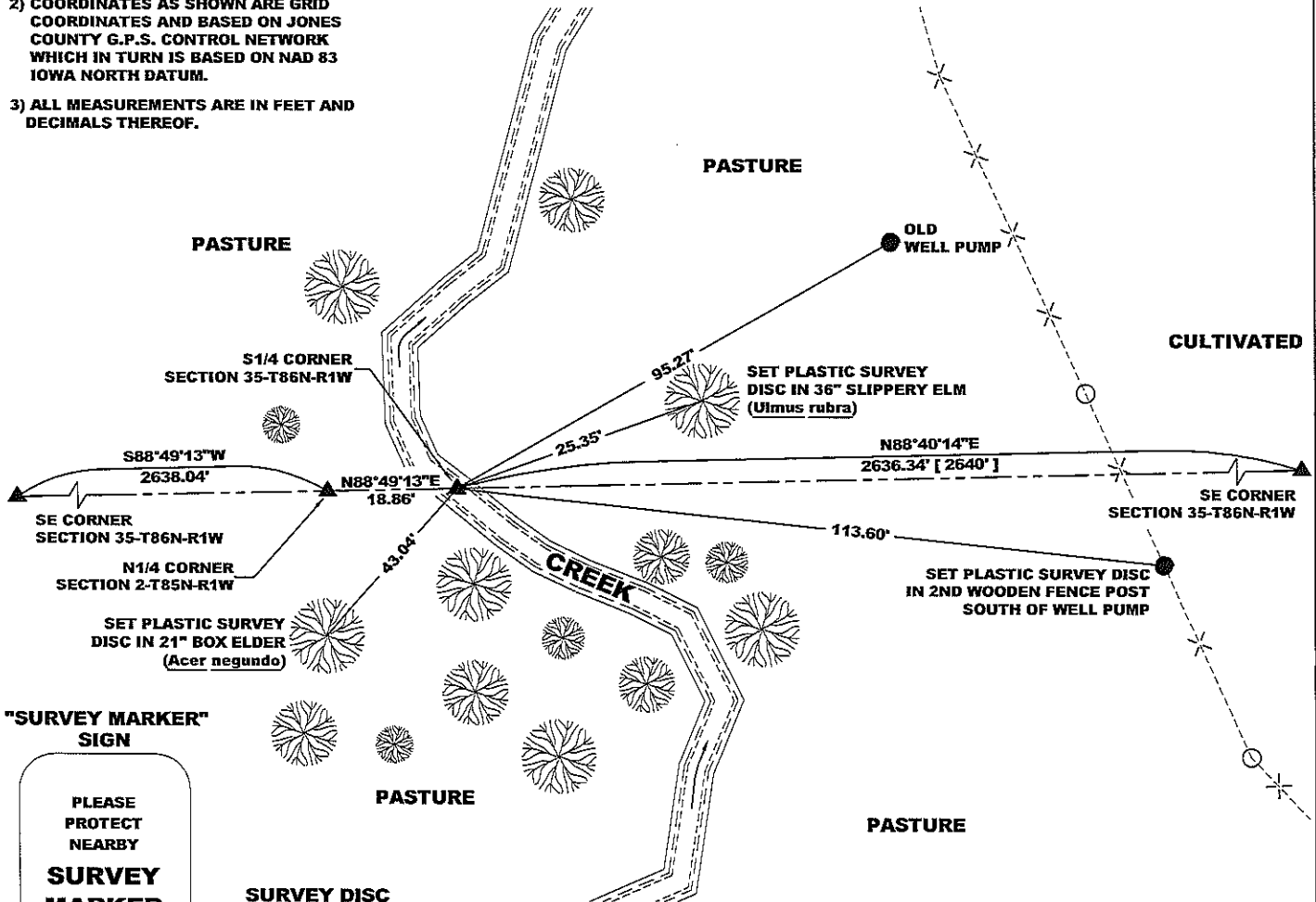
STATE PLANE COORDINATE
 NAD 83 IOWA NORTH
 N 3549372.85
 E 5618153.71

CORNER SECTION TOWNSHIP RANGE
 S 1/4 CORNER 35 T86N R1W

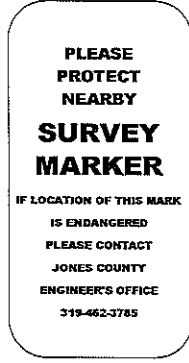


NOTES:

- 1) THE STATE PLANE COORDINATES AS SHOWN ARE FOR CONVENIENCE ONLY. THE TIES AS SHOWN SHOULD BE USED TO REPLACE THE CORNER, IF DESTROYED.
- 2) COORDINATES AS SHOWN ARE GRID COORDINATES AND BASED ON JONES COUNTY G.P.S. CONTROL NETWORK WHICH IN TURN IS BASED ON NAD 83 IOWA NORTH DATUM.
- 3) ALL MEASUREMENTS ARE IN FEET AND DECIMALS THEREOF.



"SURVEY MARKER" SIGN



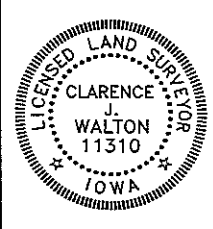
- LEGEND**
- OPC ORANGE PLASTIC CAP
 - () RECORDED MEASUREMENT
 - [] PER ORIGINAL GOVERNMENT SURVEY FIELD NOTES

PAGE 3 of 4

PREVIOUSLY RECORDED IN N/A

MONUMENT DESCRIPTION AND HOW ESTABLISHED SET 5/8" X 48" REBAR WITH ORANGE PLASTIC CAP # 11310 BETWEEN 2 FOUND LIMESTONES, THE NORTH OF WHICH IS 6" IN WIDTH AND 20" IN LENGTH (DEPTH NOT MEASURED BUT STONE IS WELL SEATED IN STREAM BED) AND THE SOUTH OF WHICH IS 5" IN WIDTH AND 21" IN LENGTH (DEPTH NOT MEASURED, BUT STONE IS ALSO WELL SEATED IN STREAM BED). THIS AREA HAS MANY LOOSE LIMESTONES BUT NONE ARE ON EDGE AND NONE ARE AS LARGE AS THESE TWO STONES. WITH THE FACT THE THE TWO STONES ARE ON EDGE AND ARE BUTTED AGAINST EACH OTHER IN CLOSE PROXIMITY TO WHERE I HAD CALCULATED THIS CORNER'S LOCATION BASED ON THE MEAN ALIGNMENT AND THE MEAN DISTANCE OF THE SOUTH LINE OF TOWNSHIP 86 NORTH RANGE 1 WEST AS RUN FROM THE SE CORNER OF SAID TOWNSHIP THROUGH TO THE SW CORNER OF SAID TOWNSHIP, I ASCERTAINED THESE STONES TO BE THE S 1/4 CORNER OF SAID SECTION 34. THIS CORNER WAS 10.8' EAST AND 3.5' NORTH OF BEING ON LINE AND EQUIDISTANT BETWEEN FOUND STONES AT THE SE CORNER OF SAID SECTION 34 AND THE SE CORNER OF SECTION 35-T86N-R1W. SET FENCE POST WITH YELLOW "SURVEY MARKER" SIGN ON SOUTH SIDE OF STONES AS WITNESS TO CORNER. PLEASE REFER TO THE CORNER CERTIFICATES FILED FOR THE SE CORNERS OF SAID SECTIONS 34 AND 35 FOR FURTHER REFERENCE.

FIELD BOOK 344, PAGES 66 & 71. DATE OF SURVEY: 4/30/10



I hereby certify that this land surveying document and the related survey work was performed by me or under my direct personal supervision and that I am a duly registered Land Surveyor under the laws of the State of Iowa.
 Signed: *Clarence J. Walton* 5/14/10
 Clarence J. Walton, L.S.
 My Registration Renewal Date is December 31, 2011
 Iowa License Number 11310
 Pages or sheets covered by this seal: 1 of 1.

- A. THERE IS NO CERTIFICATE FOR THE CORNER ON FILE WITH THE RECORDER OF THE COUNTY IN WHICH THE CORNER IS LOCATED.
- B. THE CORNER MONUMENT HAS BEEN REPLACED OR MODIFIED.
- C. THE SURVEYOR IN RESPONSIBLE CHARGE OF THE LAND SURVEYING ACCEPTS A CORNER POSITION THAT DIFFERS FROM THAT SHOWN IN THE PUBLIC RECORDS OF THE COUNTY IN WHICH THE CORNER IS LOCATED.
- D. THE REFERENCE TIES REFERRED TO IN AN EXISTING PUBLIC RECORD NO LONGER EXIST.
- E. EXISTING CORNER TIES UPDATED.

CORNERS TO BE INDEXED

CORNER	SECTION	TOWNSHIP	RANGE
S 1/4 CORNER	35	86N	1W

JONES COUNTY ENGINEER'S OFFICE

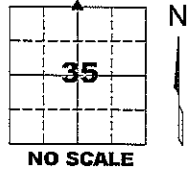
19501 HWY. 64, ANAMOSA, IOWA 52205
 (319) 462-3785

UNITED STATES PUBLIC LAND SURVEY CORNER CERTIFICATE

LAND SURVEY MONUMENTS SITUATED IN SECTION 35, TOWNSHIP 86 NORTH,
 RANGE 1 WEST OF THE 5TH PRINCIPAL MERIDIAN, JONES COUNTY, IOWA.

STATE PLANE COORDINATE
 NAD 83 IOWA NORTH
 N 3554703.42
 E 5618030.99

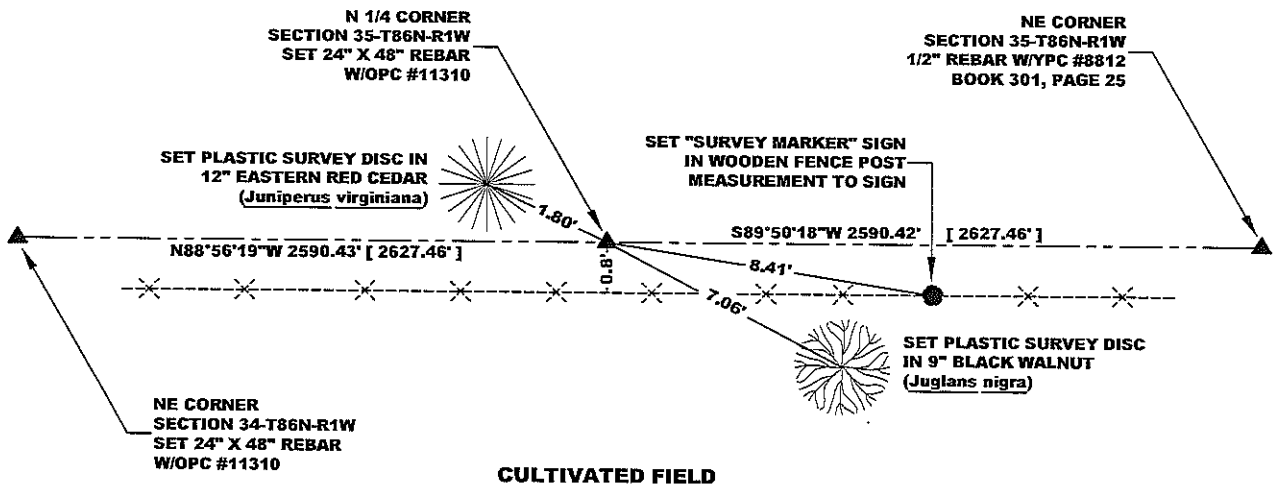
CORNER SECTION TOWNSHIP RANGE
 N 1/4 CORNER 35 T86N R1W



NOTES:

- 1) THE STATE PLANE COORDINATES AS SHOWN ARE FOR CONVENIENCE ONLY. THE TIES AS SHOWN SHOULD BE USED TO REPLACE THE CORNER, IF DESTROYED.
- 2) COORDINATES AS SHOWN ARE GRID COORDINATES AND BASED ON JONES COUNTY G.P.S. CONTROL NETWORK WHICH IN TURN IS BASED ON NAD 83 IOWA NORTH DATUM.
- 3) ALL MEASUREMENTS ARE IN FEET AND DECIMALS THEREOF.

TIMBERED PASTURE



"SURVEY MARKER" SIGN



SURVEY DISC



LEGEND

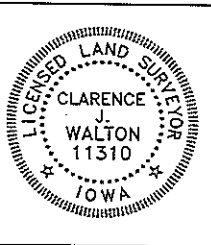
- OPC ORANGE PLASTIC CAP
- YPC YELLOW PLASTIC CAP
- () RECORDED MEASUREMENT
- [] PER ORIGINAL GOVERNMENT SURVEY FIELD NOTES

PAGE 4 of 4

PREVIOUSLY RECORDED IN N/A

MONUMENT DESCRIPTION AND HOW ESTABLISHED SET 5/8" X 48" REBAR WITH ORANGE PLASTIC CAP # 11310 ON AVERAGE LINE OF EAST-WEST FENCE LINE EQUIDISTANT BETWEEN NE CORNER OF SECTION 35-T86N-R1W AND NE CORNER OF SECTION 34-T86N-R1W. NO OTHER EVIDENCE WAS FOUND THAT WOULD INDICATE WHERE THIS CORNER WAS ORIGINALLY SET. THERE IS A 15" X 16" X 13" LIMESTONE ABOUT 10 FEET EAST OF WHERE WE SET THE REBAR. THE STONE IS RESTING ON SURFACE OF EXISTING GROUND. I REJECTED THE STONE OUT OF HAND AS POSSIBLY BEING A SECTION CORNER.

FIELD BOOK 344, PAGE 64. DATE OF SURVEY: 5/10/10



I hereby certify that this land surveying document and the related survey work was performed by me or under my direct personal supervision and that I am a duly registered Land Surveyor under the laws of the State of Iowa.
 Signed: *Clarence J. Walton* 5/14/10
 Clarence J. Walton, L.S.
 My Registration Renewal Date is December 31, 2011
 Iowa License Number 11310
 Pages or sheets covered by this seal: 1 of 1.

- A. THERE IS NO CERTIFICATE FOR THE CORNER ON FILE WITH THE RECORDER OF THE COUNTY IN WHICH THE CORNER IS LOCATED.
- B. THE CORNER MONUMENT HAS BEEN REPLACED OR MODIFIED.
- C. THE SURVEYOR IN RESPONSIBLE CHARGE OF THE LAND SURVEYING ACCEPTS A CORNER POSITION THAT DIFFERS FROM THAT SHOWN IN THE PUBLIC RECORDS OF THE COUNTY IN WHICH THE CORNER IS LOCATED.
- D. THE REFERENCE TIES REFERRED TO IN AN EXISTING PUBLIC RECORD NO LONGER EXIST.
- E. EXISTING CORNER TIES UPDATED.

CORNERS TO BE INDEXED

CORNER	SECTION	TOWNSHIP	RANGE
N 1/4 CORNER	35	86N	1W
S 1/4 CORNER	26	86N	1W

JONES COUNTY ENGINEER'S OFFICE



19501 HWY. 64, ANAMOSA, IOWA 52205
 (319) 462-3785