

Marie Krutzfield, Recorder
 Jones County, Iowa

Prepared by *Wm. Burger Land Surveyor* 510 3rd Street West Court, Worthington, Iowa Phone 563 - 855 2028

UNITED STATES PUBLIC LAND SURVEY CORNER CERTIFICATE

Land Survey Monuments situated in Section 2, Township 85N, Range 1W, of the Fifth Principal Meridian, Jones County, Iowa. Previously recorded in N/A in the Office of the County Recorder

Monument Description and Remarks: (No Corner Certificates found at the County Recorders Office)

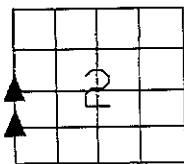
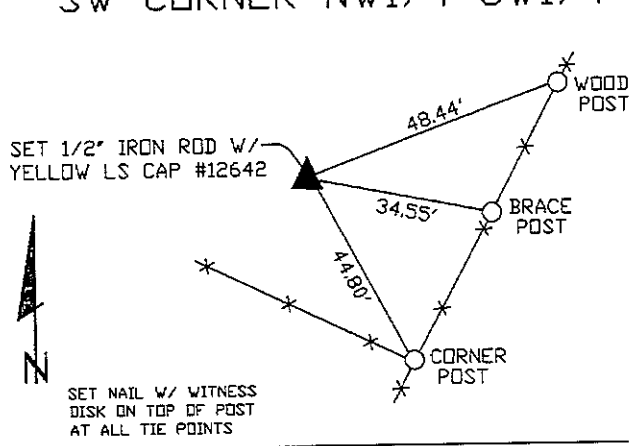
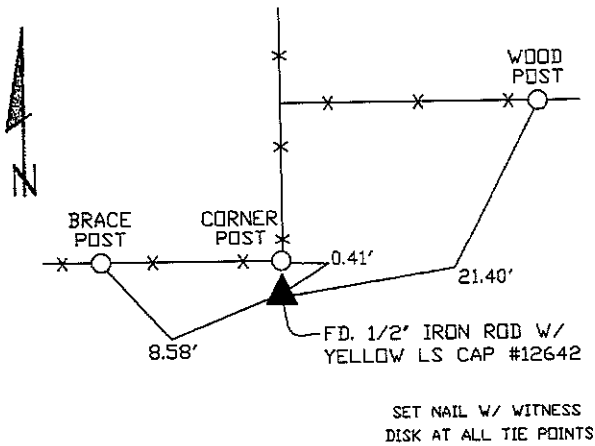
W1/4 CORNER - FD. 1/2" IRON ROD W/ YELLOW LS CAP #12642

SW CORNER NW1/4 SW1/4 - SET 1/2" IRON ROD W/ YELLOW LS CAP #12642 - SET ON LINE AND MIDWAY BETWEEN THE W1/4 CORNER AND THE SW CORNER

W1/4 CORNER

PLAN VIEW

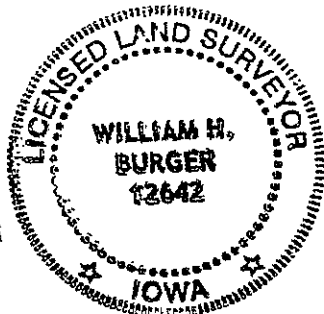
SW CORNER NW1/4 SW1/4



SEC. 2 TWP. 85N RANGE 1W

CORNERS TO BE INDEXED .

W1/4 CORNER	2	85N	1W
SW CORNER NW1/4 SW1/4	2	85N	1W



I hereby certify that this land surveying document was prepared and related survey work was performed by me or under my direct personal supervision and that I am a duly licensed Land Surveyor under the laws of the State of Iowa.

William H. Burger 11/15/07
 William H. Burger Date

License number 12642

My license renewal date is December 31, 2008

Pages or Sheets covered by this seal: Sheet 1 of 1