

COPY

Jones County Marie Krutzfield Recorder
Fee Book 2012 1008
04/17/2012 @0813AM # Pages 1
ZSC SEC COR CERT
Total Fees: \$7.00

PREPARED BY: MICHAEL J. WEBER, WEBER SURVEYING, LLC, 26789 46TH AVE, BERNARD, IA 52032 (563) 879-4173

UNITED STATES PUBLIC LAND SURVEY CORNER CERTIFICATE
OF

LAND SURVEY MONUMENTS SITUATED IN SECTION 3, TOWNSHIP 85 NORTH, RANGE 1 WEST
OF THE FIFTH PRINCIPAL MERIDIAN, JONES COUNTY, IOWA.
PREVIOUSLY RECORDED NONE UNLESS OTHERWISE NOTED
(book, page, document number, etc.)

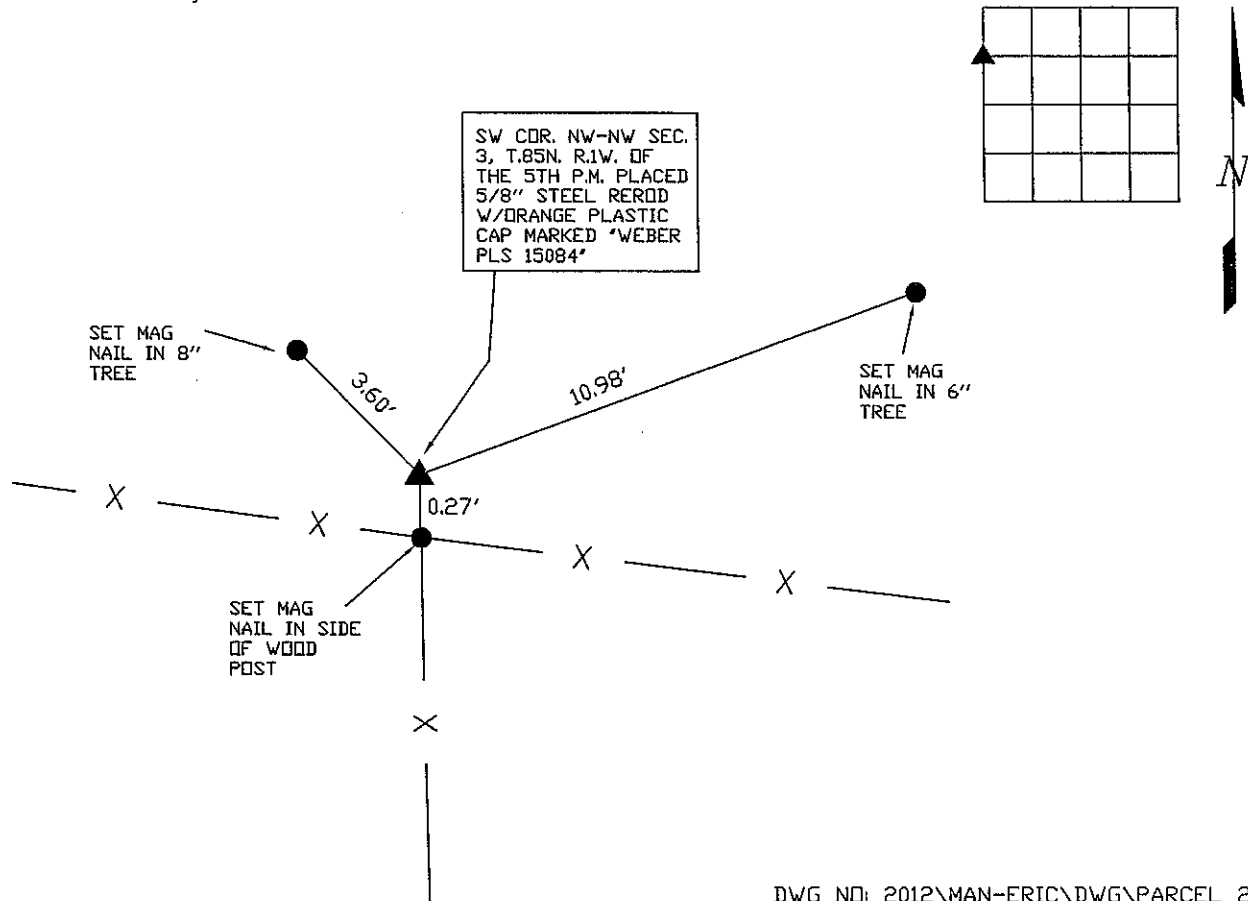
(Show reason for preparing this certificate, the evidence and detailed procedures used in establishing the corner positions and monumentation found or placed.)

Monument Description and Remarks:

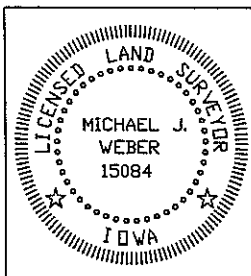
THE FOLLOWING CORNERS WERE USED AND IDENTIFIED ON THE PLAT OF SURVEY OF PARCEL 2012-79
SW COR. NW-NW SEC. 3, T.85N. R.1W. OF THE 5TH P.M. PLACED 5/8" STEEL REROD W/ORANGE PLASTIC
CAP MARKED "WEBER PLS 15084", ESTABLISHED CORNER USING OCCUPATION FENCELINE EVIDENCE.

PLAN - VIEW

(Show a minimum of three reference ties to durable physical objects, relevant monuments and physical conditions that will enable recovery of the corner.)



DWG NO: 2012\MAN-ERIC\DWG\PARCEL 2012-79



I HEREBY CERTIFY THAT THIS LAND SURVEYING DOCUMENT WAS PREPARED AND THE RELATED SURVEY WORK WAS PERFORMED BY ME OR UNDER MY DIRECT PERSONAL SUPERVISION AND THAT I AM A DULY LICENSED LAND SURVEYOR UNDER THE LAWS OF THE STATE OF IOWA.

Michael J. Weber April 16, 2012
MICHAEL J. WEBER (DATE)

LICENSE NUMBER 15084
MY LICENSE RENEWAL DATE IS DECEMBER 31, 2013

SHEETS COVERED BY THIS SEAL: Sheet 1

Corner	Sec	Twp	Range
SW Cor.	NW-NW 3	85N	1W