

### UNITED STATES PUBLIC LAND SURVEY CORNER CERTIFICATE

Land Survey Monuments situated in Section 33, Township 86N, Range 1W, of the Fifth Principal Meridian, Jones County, Iowa. Previously recorded in N/A in the Office of the County Recorder

Monument Description and Remarks: (No Corner Certificates found at the County Recorders Office)

NW CORNER - SET 1/2" IRON ROD W/ YELLOW LS CAP # 12642 - SET ON LINE WITH THE N1/4 CORNER AND THE NE CORNER AND SET 653.40' WEST OF THE CENTERLINE OF TEMPLE HILL ROAD AS ACCORDING TO OLD DEED RECORD

SW CORNER NW1/4 NW1/4 - SET 1/2" IRON ROD W/ YELLOW LS CAP # 12642 - SET ON LINE AND MIDWAY BETWEEN THE NW CORNER AND THE W1/4 CORNER

SW CORNER - FOUND STONE

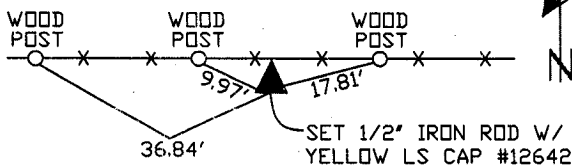
#### PLAN VIEW

NW CORNER

SW CORNER NW1/4 NW1/4

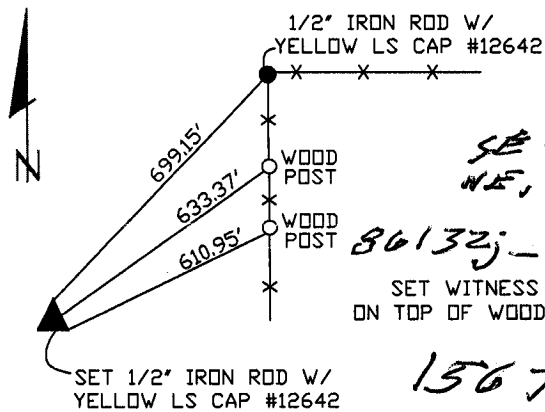
NE-32

86132z-011705.tif



SET WITNESS CAP ON TOP OF POST AT ALL TIE POINTS

1566 ✓



SE 608 NE, NE-32

86132z-011705.tif

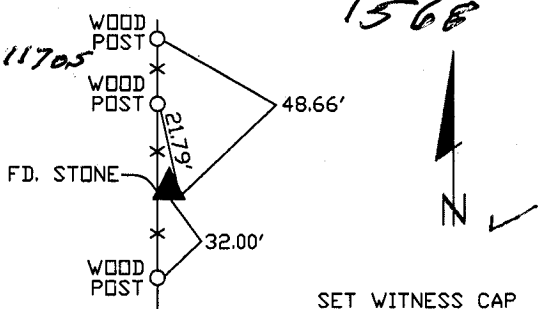
SET WITNESS CAP ON TOP OF WOOD POSTS

1567 ✓

SW CORNER

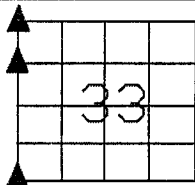
SE-32

86132z-011705.tif



1568 ✓

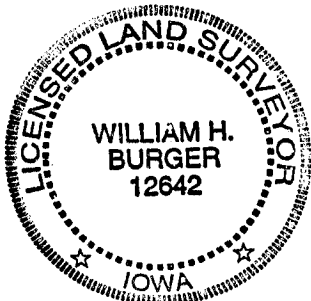
SET WITNESS CAP AT ALL TIE POINTS



SEC. 33 TWP. 86N RANGE 1W

#### CORNERS TO BE INDEXED

NW CORNER	33	86N	1W
SW CORNER NW1/4 NW1/4	33	86N	1W
SW CORNER	33	86N	1W



I hereby certify that this land surveying document was prepared and related survey work was performed by me or under my direct personal supervision and that I am a duly licensed Land Surveyor under the laws of the State of Iowa.

*William H. Burger* 1/17/05  
Date

William H. Burger

License number 12642

My license renewal date is December 31, 2006

Pages or Sheets covered by this seal: Sheet 1 of 1

AS

THIS IS NOT A CERTIFICATION

2

JONES COUNTY ENGINEER'S OFFICE, 19501 HWY. 64, ANAMOSA, IOWA, 52205 (319)462-3785

# UNITED STATES PUBLIC LAND SURVEY CORNER CERTIFICATE

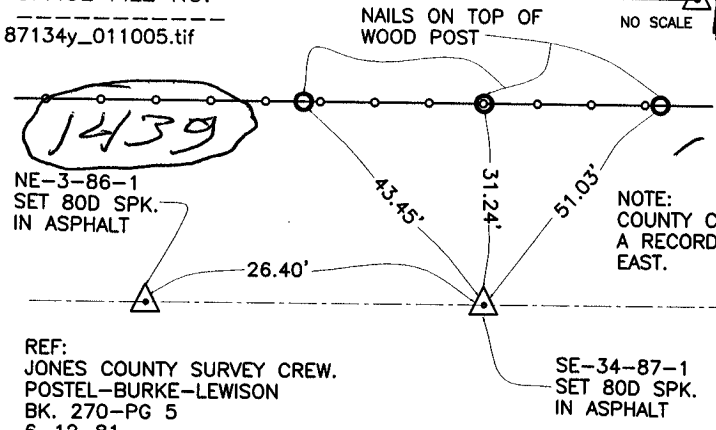
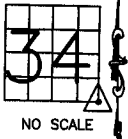
LAND SURVEY MONUMENTS SITUATED IN SECTION 34, TOWNSHIP 87 NORTH, RANGE 1 WEST OF THE 5TH P.M., JONES COUNTY, IOWA

### CORNERS TO BE INDEXED

CORNER SECTION TOWNSHIP RANGE  
SOUTHEAST 34 87N 1W

OFFICE FILE NO.

87134y\_011005.tif



NOTE: COUNTY CREW MUST HAVE HAD A RECORD TIE TO PROPERTY LINE EAST.

REF: JONES COUNTY SURVEY CREW. POSTEL-BURKE-LEWISON BK. 270-PG 5 6-12-81

SE-34-87-1 SET 80D SPK. IN ASPHALT

COUNTY ROAD D-62

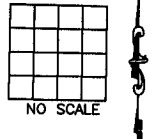
86134y\_011705.tif

PREVIOUSLY RECORDED IN BOOK \_\_\_\_\_, PAGE \_\_\_\_\_  
MONUMENT DESCRIPTION AND HOW ESTABLISHED SET 80d SPIKE IN ASPHALT MAT. MEASURED 672' FROM PROP. LINE EAST, SPLIT ROW FENCES. ORIGINAL STONE GONE DUE TO CONSTRUCTION. TIES AS SHOWN SOUTHEAST CORNER SECTION 34, TOWNSHIP 87 NORTH, RANGE 1 WEST OF 5TH PRINCIPAL MERIDIAN, JONES COUNTY, IOWA.

### CORNERS TO BE INDEXED

CORNER SECTION TOWNSHIP RANGE

OFFICE FILE NO.

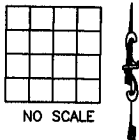


PREVIOUSLY RECORDED IN BOOK \_\_\_\_\_, PAGE \_\_\_\_\_  
MONUMENT DESCRIPTION AND HOW ESTABLISHED \_\_\_\_\_

### CORNERS TO BE INDEXED

CORNER SECTION TOWNSHIP RANGE

OFFICE FILE NO.

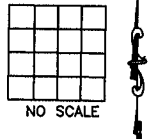


PREVIOUSLY RECORDED IN BOOK \_\_\_\_\_, PAGE \_\_\_\_\_  
MONUMENT DESCRIPTION AND HOW ESTABLISHED \_\_\_\_\_

### CORNERS TO BE INDEXED

CORNER SECTION TOWNSHIP RANGE

OFFICE FILE NO.



PREVIOUSLY RECORDED IN BOOK \_\_\_\_\_, PAGE \_\_\_\_\_  
MONUMENT DESCRIPTION AND HOW ESTABLISHED \_\_\_\_\_

~~I hereby declare that this plat, survey or report was made by me or under my direct personal supervision and that I am a duly registered Land Surveyor under the laws of the State of Iowa.~~

Signed: \_\_\_\_\_

SEAL

JONES COUNTY ENGINEER'S OFFICE

19501 HWY. 64,  
ANAMOSA, IOWA,  
52205 (319)462-3785