

2001 0788

FILED
RECORDERS OFFICE
JONES COUNTY IOWA

01 MAR -9 AM 10:32

MARIE KRUTZFIELD
RECORDER 6.00 pd

Prepare's Name: John L. White Address: 1212 Locust St. Dubuque, IA Telephone: 556-4389

SLSI 9-94

UNITED STATES PUBLIC LAND SURVEY CORNER CERTIFICATE

OF

Land Survey Monuments situated in Section 6, Township 85N, Range 1W, of the Fifth Principal Meridian, JONES County, Iowa.
Previously recorded in _____ in County Recorder's Office.
(book, page, document number, etc.)

(Show reason for preparing this certificate, the evidence and detailed procedures used in establishing the corner positions and monumentation found or placed.)

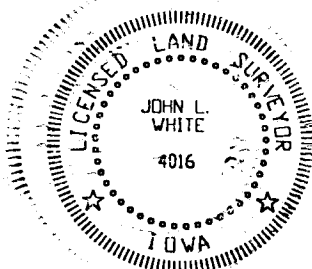
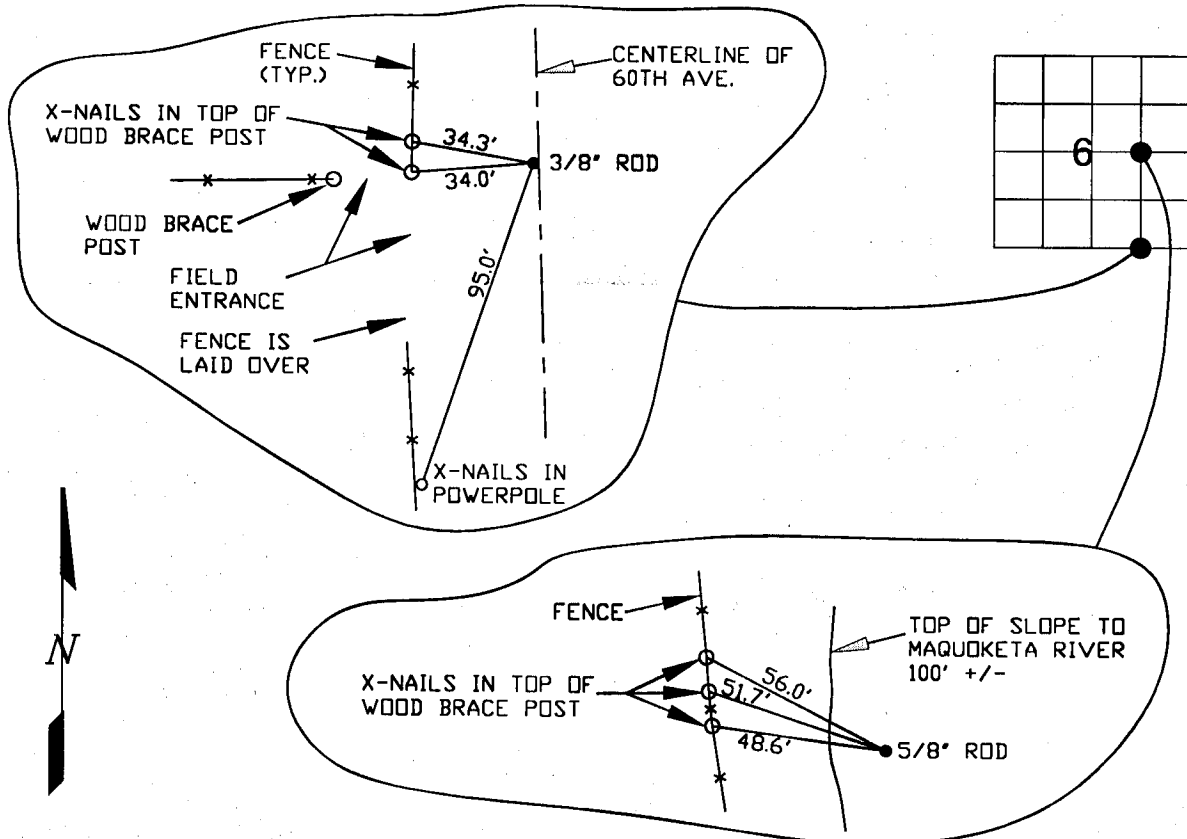
Monument Description and Remarks: FOUND 3/8" IRON ROD @ THE SW CORNER OF THE SE1/4 SE1/4 BURYED 1" IN CENTERLINE OF 60TH AVE..

PLACED 5/8" REROD/YELLOW CAP #4016 W/ANGLE IRON @ THE NW CORNER OF THE NE1/4 SE1/4

EXPOSED 5". SET CORNER MID-WAY & ON LINE BETWEEN CENTER & E1/4 CORNER

PLAN - VIEW

(Show a minimum of three reference ties to durable physical objects, relevant monuments and physical conditions that will enable recovery of the corner.)



I HEREBY CERTIFY THAT THIS LAND SURVEYING DOCUMENT WAS PREPARED AND THE RELATED SURVEY WORK WAS PERFORMED BY ME OR UNDER MY DIRECT PERSONAL SUPERVISION AND THAT I AM A DULY LICENSED LAND SURVEYOR UNDER THE LAWS OF THE STATE OF IOWA.

John L. White 9 Mar. 2001
JOHN L. WHITE (DATE)

LICENSE NUMBER 4016

MY LICENSE RENEWAL DATE IS DECEMBER 31, 2002

List Corners	Section	Twp	Range
SW COR. OF SE1/4 SE1/4	6	85N	1W
NW COR. OF NE1/4 SE1/4	6	85N	1W

BUESING & ASSOCIATES CONSULTING ENGINEERS 1212 LOCUST STREET DUBUQUE, IOWA 52001 (319) 556-4389	MONUMENT RECORD		
	COUNTY: <u>JONES</u>	TOWNSHIP: <u>CLAY</u>	
DATE PLOTTED: 3-6-01	FIELD BOOK #	DRAWING # 00038-02	
DATE REVISED:	PAGE # SHOT-IN		