

COPY

FEE BOOK: 2010 0159 1/15/2010 12:15 PM

REC FEES: \$9.00

PAGES: 1

Marie Krutzfield, Recorder
Jones County, Iowa

PREPARED BY: MATTHEW W. KRAUSE, MARTIN & WHITACRE SURVEYORS & ENGINEERS,
P.O. BOX 413, MUSCATINE, IOWA 52761 / PHONE: 563-263-7691

UNITED STATES PUBLIC LAND SURVEY CORNER CERTIFICATE OF

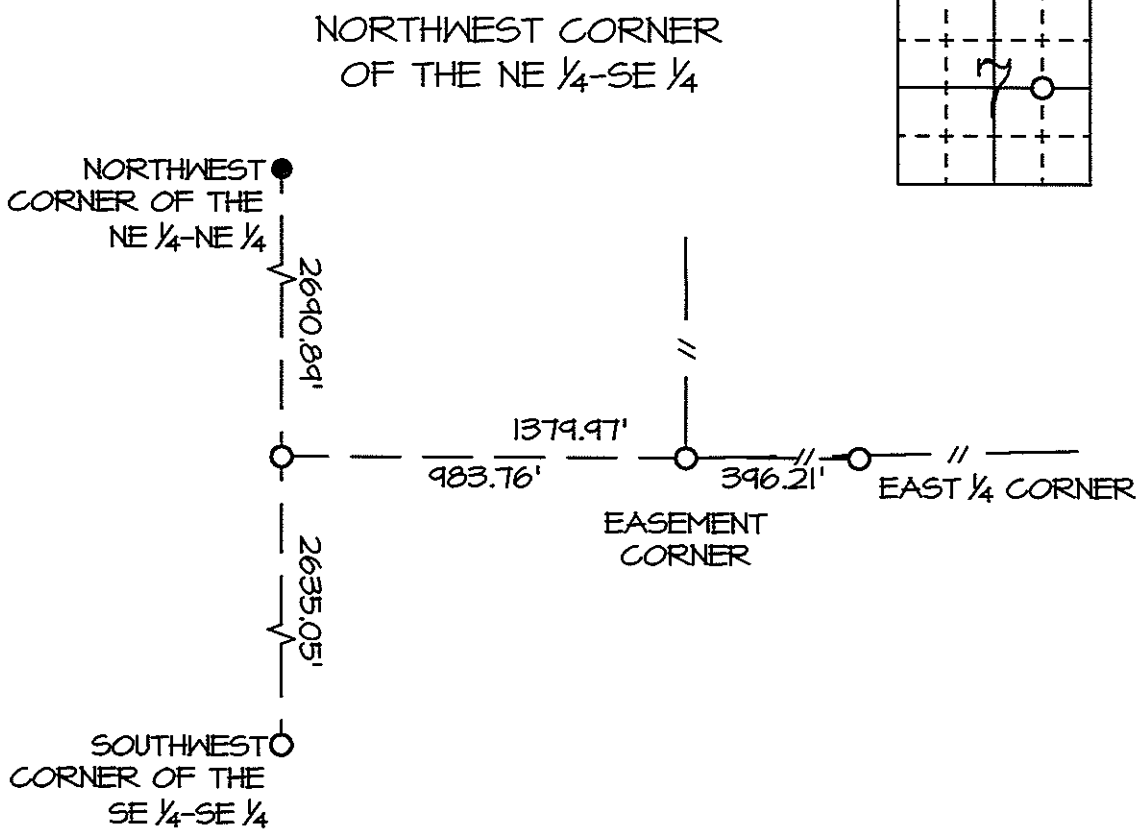
Land Survey Monuments situated in Section 7, Township T85N, Range RIW, of the Fifth Principal Meridian, JONES County, Iowa.

Reason for preparing certificate: -No Certificate on File -Monument Type Replaced/Differs
 -Existing Ties Inaccurate -Differing Position Accepted

Previously recorded in N/A in County Recorder's Office.

Monument Description and Remarks: NORTHWEST CORNER OF THE NE 1/4-SE 1/4 - SET A 1/2" REBAR W/ORANGE CAP #15981 1.5' DEEP IN FIELD, NO CLOSE TIES. SET AT THE INTERSECTION OF A LINE BETWEEN THE NORTHWEST CORNER OF THE NE 1/4-NE 1/4 AND THE SOUTHWEST CORNER OF THE SE 1/4-SE 1/4, AND A LINE FROM THE E 1/4 CORNER EXTENDED WEST ALONG AN ANCIENT FENCE OF OCCUPATION.

PLAN-VIEW



Drawn By: CCS

Date: 01/06/10

M&W: Book JONES Page N/A

Job No. 7183.09

I hereby certify that the survey work was completed and this certificate was prepared by me or under my direct personal supervision and that I am a duly licensed land surveyor under the laws of the state of Iowa.

Signature: Matthew W. Krause

Date: Jan 9, 2010 License No. LS15981
My License Expires 12/31/2011.



List Corners to be Indexed

Corners	Section	Twp	Range
NW			
NE 1/4-SE 1/4	7	T85N	RIW