

COPY

FEE BOOK: 2010 0158 1/15/2010 12:14 PM

REC FEES: \$9.00

PAGES: 1

Marie Krutzfield, Recorder
Jones County, Iowa

PREPARED BY: MATTHEW W. KRAUSE, MARTIN & WHITACRE SURVEYORS & ENGINEERS,
P.O. BOX 413, MUSCATINE, IOWA 52761 / PHONE: 563-263-7691

UNITED STATES PUBLIC LAND SURVEY CORNER CERTIFICATE OF

Land Survey Monuments situated in Section 8, Township T85N, Range RIW, of the Fifth Principal Meridian, JONES County, Iowa.

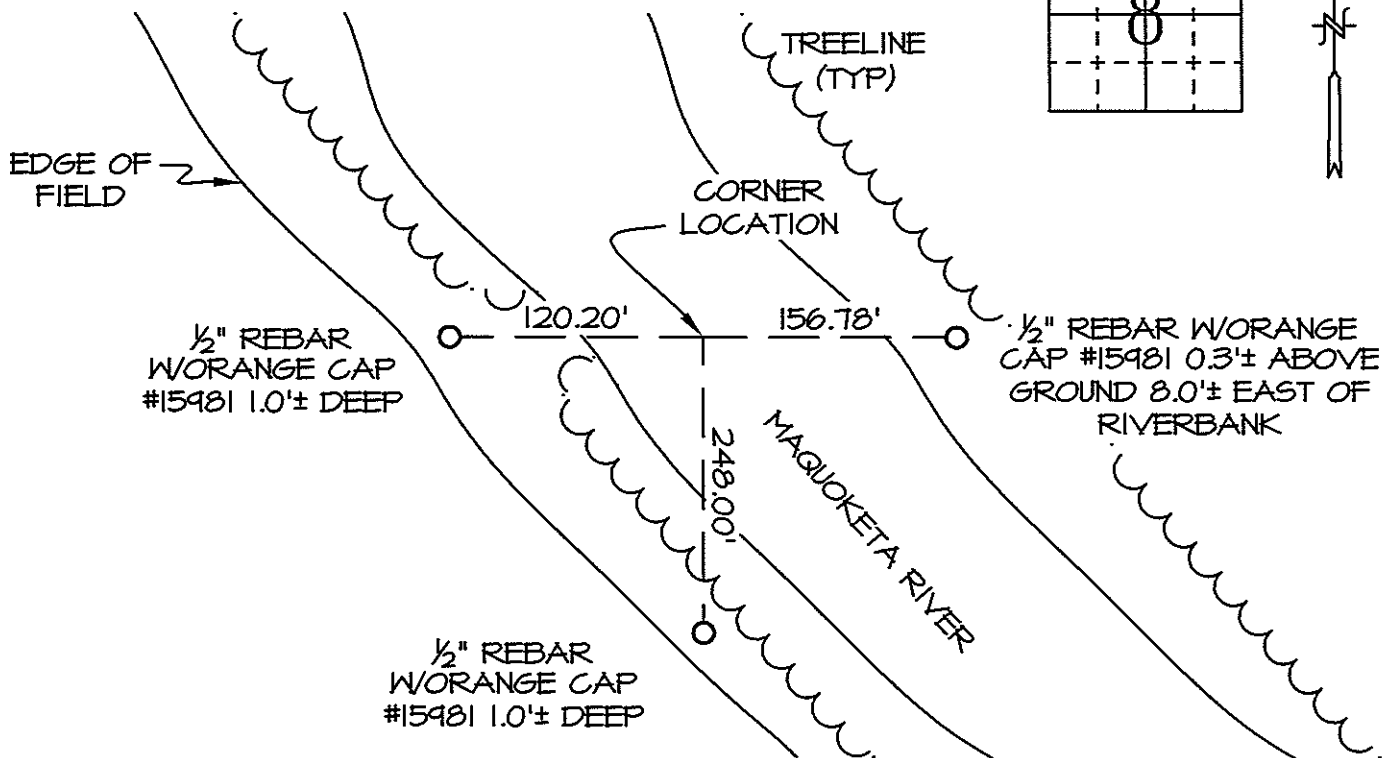
Reason for preparing certificate: -No Certificate on File -Monument Type Replaced/Differs
 -Existing Ties Inaccurate -Differing Position Accepted

Previously recorded in N/A in County Recorder's Office.

Monument Description and Remarks: NORTHWEST CORNER - LIES IN MAQUOKETA RIVER SET 1/2" REBAR W/ORANGE CAP #15981 WITNESS PINS TO THE SOUTH, EAST, AND WEST ON SECTION LINES. COMPUTED USING THE PREVIOUSLY ESTABLISHED WEST LINE OF SECTION 8 EXTENDED NORTH TO THE INTERSECTION WITH THE APPARENT NORTH LINE OF SECTION 7, AN ANCIENT FENCE OF OCCUPATION, EXTENDED EAST.

PLAN-VIEW

NORTHWEST CORNER



Drawn By: CCS Date: 01/06/10 M&W: Book JONES Page 72 Job No. 7183.09

I hereby certify that the survey work was completed and this certificate was prepared by me or under my direct personal supervision and that I am a duly licensed land surveyor under the laws of the state of Iowa.

Signature: Matthew W. Krause

Date: Jan 9, 2010 License No. LS15981
My License Expires 12/31/2011.



List Corners to be Indexed

Corners	Section	Twp	Range
NW	8	T85N	RIW